

Product datasheet for **RC205023**

CCDC12 (NM_144716) Human Tagged ORF Clone

Product data:

Product Type: Expression Plasmids
Product Name: CCDC12 (NM_144716) Human Tagged ORF Clone
Tag: Myc-DDK
Symbol: CCDC12
Mammalian Cell Selection: Neomycin
Vector: pCMV6-Entry (PS100001)
E. coli Selection: Kanamycin (25 ug/mL)
ORF Nucleotide Sequence: >RC205023 ORF sequence
 Red=Cloning site Blue=ORF Green=Tags(s)

TTTTGTAATACGACTCACTATAGGGCGGCCGGAATTCGTCGACTGGATCCGGTACCGAGGAGATCTGCC
 GCC**CGATCGCC**

ATGGAGGCGACTACGGCTGGTGTGGCCGGCTAGAGGAAGAGGCGTTGCGGCGAAAGGAACGGCTGAAGG
 CCCTACGGGAGAAAACCGGGCGCAAGGACAAGGAAGATGGGGAGCCAAAGACCAAGCATCTCAGAGAAGA
 GGAGGAAGAAGGCGAGAAGCACAGGGAACCTAGGCTGCGGAACATGTCCCGAGGATGAGGACCTGAAG
 AAGAGGAGGTTGCCCCAGGCCAAACCGTTGCAGTGGAGGAGAAGGTGAAGGAGCAGCTGGAGCCGCCA
 AGCCCGAGCCCGTACATCGAGGAGGTGGACCTGGCCAACCTCGCTCCTCGGAAGCCTGACTGGGACCTCAA
 GAGAGATGTGGCCAAGAAGCTGGAGAACTAAAAAAGCGGACTCAGAGGGCTATTGCCGAGCTGATCCGT
 GAAAGGCTGAAAGGCCAGGAAGACAGCCTAGCCTCTGCAGTGGATGCTGCCACCGAACAAGACCTGTG
 ACTCCGAC

ACGCGTACGCGGCCGCTCGAGCAGAACTCATCTCAGAAGAGGATCTGGCAGCAATGATATCCTGGATT
 ACAAGGATGACGACGATAAGGTTTAA

Protein Sequence: >RC205023 protein sequence
 Red=Cloning site Green=Tags(s)

MEATTAGVGRLEEEALRRKERLKLREKTGRKDKEDGEPKTKHLREEEEEGEKHRELRLRNYVPEDEDLK
 KRRVPQAKPVAVEEKVKEQLEAAKPEPVIEEVDLANLAPRKPDWDLKRDVAKKLELKKRTQRAIAELIR
 ERLKGGEDSLASAVDAATEQKTCDS

TRTRPLEQKLISEEDLAANDILDYKDDDDKV

Chromatograms: https://cdn.origene.com/chromatograms/mk6551_g04.zip

Restriction Sites: SgfI-MluI



[View online »](#)

Cloning Scheme:


ACCN: NM_144716

ORF Size: 498 bp

OTI Disclaimer: The molecular sequence of this clone aligns with the gene accession number as a point of reference only. However, individual transcript sequences of the same gene can differ through naturally occurring variations (e.g. polymorphisms), each with its own valid existence. This clone is substantially in agreement with the reference, but a complete review of all prevailing variants is recommended prior to use. [More info](#)

OTI Annotation: This clone was engineered to express the complete ORF with an expression tag. Expression varies depending on the nature of the gene.

Components: The ORF clone is ion-exchange column purified and shipped in a 2D barcoded Matrix tube containing 10ug of transfection-ready, dried plasmid DNA (reconstitute with 100 ul of water).

- Reconstitution Method:**
1. Centrifuge at 5,000xg for 5min.
 2. Carefully open the tube and add 100ul of sterile water to dissolve the DNA.
 3. Close the tube and incubate for 10 minutes at room temperature.
 4. Briefly vortex the tube and then do a quick spin (less than 5000xg) to concentrate the liquid at the bottom.
 5. Store the suspended plasmid at -20°C. The DNA is stable for at least one year from date of shipping when stored at -20°C.

RefSeq: [NM_144716.2](#)

RefSeq Size: 1035 bp

RefSeq ORF: 540 bp

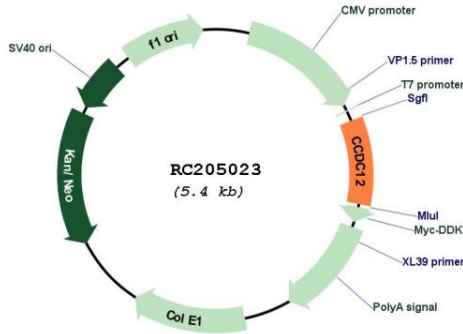
Locus ID: 151903

Cytogenetics: 3p21.31

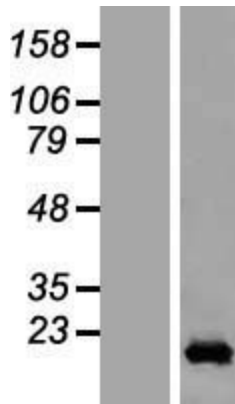
Protein Pathways: Spliceosome

MW: 19.2 kDa

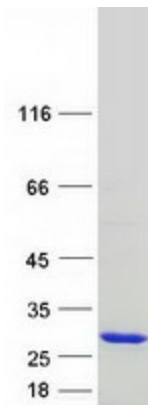
Product images:



Circular map for RC205023



Western blot validation of overexpression lysate (Cat# [LY408166]) using anti-DDK antibody (Cat# [TA50011-100]). Left: Cell lysates from untransfected HEK293T cells; Right: Cell lysates from HEK293T cells transfected with RC205023 using transfection reagent MegaTran 2.0 (Cat# [TT210002]).



Coomassie blue staining of purified CCDC12 protein (Cat# [TP305023]). The protein was produced from HEK293T cells transfected with CCDC12 cDNA clone (Cat# RC205023) using MegaTran 2.0 (Cat# [TT210002]).