

Product datasheet for RC205017L3

Apolipoprotein H (APOH) (NM_000042) Human Tagged Lenti ORF Clone

Product data:

Product Type:	Expression Plasmids
Product Name:	Apolipoprotein H (APOH) (NM_000042) Human Tagged Lenti ORF Clone
Tag:	Myc-DDK
Symbol:	Apolipoprotein H
Synonyms:	B2G1; B2GP1; BG
Mammalian Cell Selection:	Puromycin
Vector:	pLenti-C-Myc-DDK-P2A-Puro (PS100092)
E. coli Selection:	Chloramphenicol (34 ug/mL)
ORF Nucleotide Sequence:	The ORF insert of this clone is exactly the same as(RC205017).
Restriction Sites:	SgfI-MluI
Cloning Scheme:	

Cloning sites used for ORF Shuttling:



* The last codon before the Stop codon of the ORF.

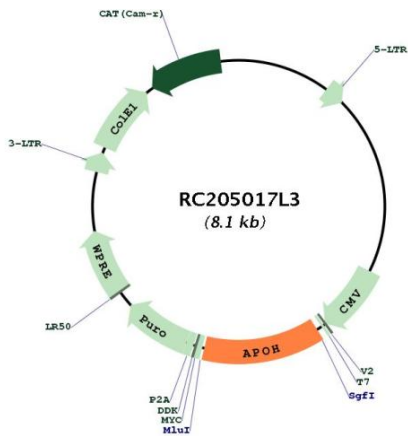
ACCN:	NM_000042
ORF Size:	1035 bp



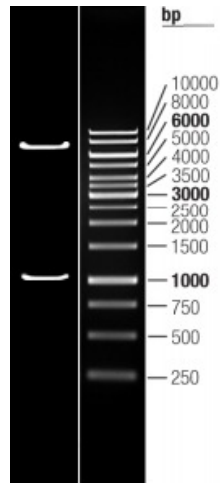
[View online »](#)

OTI Disclaimer:	The molecular sequence of this clone aligns with the gene accession number as a point of reference only. However, individual transcript sequences of the same gene can differ through naturally occurring variations (e.g. polymorphisms), each with its own valid existence. This clone is substantially in agreement with the reference, but a complete review of all prevailing variants is recommended prior to use. More info
OTI Annotation:	This clone was engineered to express the complete ORF with an expression tag. Expression varies depending on the nature of the gene.
Components:	The ORF clone is ion-exchange column purified and shipped in a 2D barcoded Matrix tube containing 10ug of transfection-ready, dried plasmid DNA (reconstitute with 100 ul of water).
Reconstitution Method:	<ol style="list-style-type: none">1. Centrifuge at 5,000xg for 5min.2. Carefully open the tube and add 100ul of sterile water to dissolve the DNA.3. Close the tube and incubate for 10 minutes at room temperature.4. Briefly vortex the tube and then do a quick spin (less than 5000xg) to concentrate the liquid at the bottom.5. Store the suspended plasmid at -20°C. The DNA is stable for at least one year from date of shipping when stored at -20°C.
RefSeq:	NM_000042.1
RefSeq Size:	1216 bp
RefSeq ORF:	1038 bp
Locus ID:	350
UniProt ID:	P02749
Cytogenetics:	17q24.2
Domains:	CCP
Protein Families:	Druggable Genome, Secreted Protein
MW:	38.3 kDa
Gene Summary:	Apolipoprotein H, also known as beta-2-glycoprotein I, is a component of circulating plasma lipoproteins. It has been implicated in a variety of physiologic pathways including lipoprotein metabolism, coagulation, hemostasis, and the production of antiphospholipid autoantibodies. APOH may be a required cofactor for anionic phospholipid binding by the antiphospholipid autoantibodies found in sera of many patients with lupus and primary antiphospholipid syndrome (APS). The anti-beta (2) glycoprotein I antibodies from APS patients, mediate inhibition of activated protein C which has anticoagulant properties. Because beta-2-GPI is the main autoantigen in patients with APS, the disruption of this pathway by autoantibodies may be an important mechanism for thrombosis in patients with APS.[provided by RefSeq, Dec 2019]

Product images:



Circular map for RC205017L3



Double digestion of RC205017L3 using SgfI and MluI