

## Product datasheet for **RC205016**

### RSPO3 (NM\_032784) Human Tagged ORF Clone

#### Product data:

Product Type:	Expression Plasmids
Product Name:	RSPO3 (NM_032784) Human Tagged ORF Clone
Tag:	Myc-DDK
Symbol:	RSPO3
Synonyms:	CRISTIN1; PWTSR; THSD2
Mammalian Cell Selection:	Neomycin
Vector:	pCMV6-Entry (PS100001)
E. coli Selection:	Kanamycin (25 ug/mL)
ORF Nucleotide Sequence:	>RC205016 ORF sequence Red=Cloning site Blue=ORF Green=Tags(s)

TTTTGTAATACGACTCACTATAGGGCGGCCGGAATTCGTCGACTGGATCCGGTACCGAGGAGATCTGCC  
GCC**CGATCGCC**

ATGCACTTGGCAGTATTCTTGGCTTTTTATCATTTTGAACTTTATGGAATACATCGGCAGCCAAAACG  
CCTCCCGGGAAGGCGCCAGCGAAGAATGCATCCTAACGTTAGTCAAGGCTGCCAAGGAGGCTGTGCAAC  
ATGCTCAGATTACAATGGATGTTTGTCTGTGTAAGCCAGACTATTTTTGCTCTGGAAAGAATTGGCATG  
AAGCAGATTGGAGTATGTCTCTTTCATGTCCAAGTGGATATTATGGAACGATATCCAGATATAAATA  
AGTGTACAAAATGCAAAGCTGACTGTGATACCTGTTTCAACAAAATTTCTGCACAAAATGTAAGTGG  
ATTTTACTTACACCTTGGAAAGTGCCTTGACAATTGCCAGAAAGGTTGGAAGCCAAACCATACTATG  
GAGTGTGTGAGTATTGTGCACTGTGAGGTGAGTGAATGGAATCCTTGGAGTCCATGCACGAAGAAGGAA  
AAACATGTGGCTTCAAAGAGGGACTGAAACACGGTCCGAGAAATAACAGCATCCTTCAGCAAAGGG  
TAACCTGTGTCCCAACAAATGAGACAAGAAAGTGTACAGTCAAAGGAAGAAGTGTGAGAAGGGAGAA  
CGAGGAAAAAAGGAAGGGAGAGGAAAAAGAAAAAACCTAATAAGGAGAAAGTAAAGAAGCAATACCTG  
ACAGCAAAGTCTGGAATCCAGCAAAGAAATCCAGAGCAACGAGAAAAACAAACAGCAGCAGAAGAAGCG  
AAAAGTCCAAGATAAACAGAAATCGGTATCAGTCAGCACTGTACAC

**ACGCGT**ACGCGGCCGCTCGAGCAGAAACTCATCTCAGAAGAGGATCTGGCAGCAAATGATATCCTGGATT  
ACAAGGATGACGACGATAAGGTTTAA



[View online »](#)

**Protein Sequence:** >RC205016 protein sequence  
Red=Cloning site Green=Tags(s)

MHLRLISWLFIIILNFMEYIGSQNASRGRQRMRHPNVSQGCQGGCATCSDYNGCLSCKPRLFFALERIGM  
 KQIGVCLSSPCSGYYGTRYPDINKCTKCKADCDTCFNKNFCTKCKSGFYHLHGKLDNCPGLEANNHTM  
 ECVSIVHCEVSEWNPWPCTKKGKTCGFKRGTE TRVREIIQHPSAKGNLCPPTNETRKCTVQRKKCQKGE  
 RGKKGRERKRKPKNGESKEAIPDSKSLESSKEIPEQRENKQQQKKRQVQDKQKSVSVSTVH

TRTRPLEQKLISEEDLAANDILDYKDDDDKV

**Chromatograms:** [https://cdn.origene.com/chromatograms/mk6069\\_h08.zip](https://cdn.origene.com/chromatograms/mk6069_h08.zip)

**Restriction Sites:** SgfI-MluI

**Cloning Scheme:**

Cloning sites used for ORF Shuttling:



\* The last codon before the Stop codon of the ORF

**ACCN:** NM\_032784

**ORF Size:** 816 bp

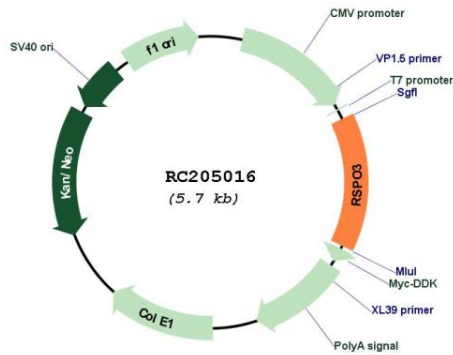
**OTI Disclaimer:** The molecular sequence of this clone aligns with the gene accession number as a point of reference only. However, individual transcript sequences of the same gene can differ through naturally occurring variations (e.g. polymorphisms), each with its own valid existence. This clone is substantially in agreement with the reference, but a complete review of all prevailing variants is recommended prior to use. [More info](#)

**OTI Annotation:** This clone was engineered to express the complete ORF with an expression tag. Expression varies depending on the nature of the gene.

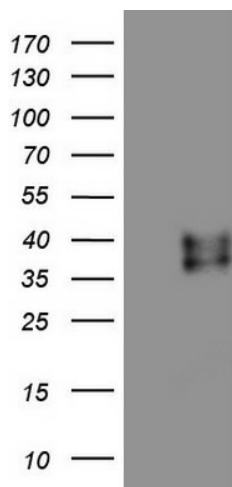
**Components:** The ORF clone is ion-exchange column purified and shipped in a 2D barcoded Matrix tube containing 10ug of transfection-ready, dried plasmid DNA (reconstitute with 100 ul of water).

<b>Reconstitution Method:</b>	<ol style="list-style-type: none"><li>1. Centrifuge at 5,000xg for 5min.</li><li>2. Carefully open the tube and add 100ul of sterile water to dissolve the DNA.</li><li>3. Close the tube and incubate for 10 minutes at room temperature.</li><li>4. Briefly vortex the tube and then do a quick spin (less than 5000xg) to concentrate the liquid at the bottom.</li><li>5. Store the suspended plasmid at -20°C. The DNA is stable for at least one year from date of shipping when stored at -20°C.</li></ol>
<b>Note:</b>	Plasmids are not sterile. For experiments where strict sterility is required, filtration with 0.22um filter is required.
<b>RefSeq:</b>	<a href="#">NM_032784.5</a>
<b>RefSeq Size:</b>	4583 bp
<b>RefSeq ORF:</b>	819 bp
<b>Locus ID:</b>	84870
<b>UniProt ID:</b>	<a href="#">Q9BXY4</a>
<b>Cytogenetics:</b>	6q22.33
<b>Domains:</b>	tsp_1, FU
<b>Protein Families:</b>	Druggable Genome, Secreted Protein
<b>MW:</b>	30.9 kDa
<b>Gene Summary:</b>	<p>This gene belongs to the R-spondin family. The encoded protein plays a role in the regulation of Wnt (wingless-type MMTV integration site family)/beta-catenin and Wnt/planar cell polarity (PCP) signaling pathways, which are involved in development, cell growth and disease pathogenesis. Genome-wide association studies suggest a correlation of this gene with bone mineral density and risk of fracture. This gene may be involved in tumor development. [provided by RefSeq, Jul 2013]</p>

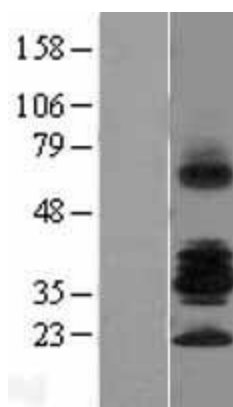
Product images:



Circular map for RC205016



HEK293T cells were transfected with the pCMV6-ENTRY control (Cat# [PS100001], Left lane) or pCMV6-ENTRY RSPO3 (Cat# RC205016, Right lane) cDNA for 48 hrs and lysed. Equivalent amounts of cell lysates (5 ug per lane) were separated by SDS-PAGE and immunoblotted with anti-RSPO3(Cat# [TA804635]). Positive lysates [LY403201] (100ug) and [LC403201] (20ug) can be purchased separately from OriGene.



Western blot validation of overexpression lysate (Cat# [LY403201]) using anti-DDK antibody (Cat# [TA50011-100]). Left: Cell lysates from untransfected HEK293T cells; Right: Cell lysates from HEK293T cells transfected with RC205016 using transfection reagent MegaTran 2.0 (Cat# [TT210002]).