

## Product datasheet for **RC205014**

### **C6orf118 (NM\_144980) Human Tagged ORF Clone**

#### **Product data:**

Product Type:	Expression Plasmids
Product Name:	C6orf118 (NM_144980) Human Tagged ORF Clone
Tag:	Myc-DDK
Symbol:	C6orf118
Synonyms:	bA85G2.1; dJ416F21.2
Mammalian Cell Selection:	Neomycin
Vector:	pCMV6-Entry (PS100001)
E. coli Selection:	Kanamycin (25 ug/mL)



[View online »](#)

**ORF Nucleotide Sequence:**

>RC205014 ORF sequence  
 Red=Cloning site Blue=ORF Green=Tags(s)

TTTTGTAATACGACTCACTATAGGGCGGCCGGGAATTCGTCGACTGGATCCGGTACCGAGGAGATCTGCC  
 GCC**CGGATCGCC**

ATGGCGGAGGAGCGGGAGCCTGAATTGTACCTGAAGTGAAGCACTGCGAGACGCCAGGCGTGAAGACCC  
 TGTGTAATCTGAAGCACTGCGAGACGCCAGGAGTGAAGACCCTGTGTAATCTGAAGAACTTCTGAACCG  
 GCTTCAGAAAGACCACCGGGAGGACGTCTACCTCTACATCTCTGGACACCTGAACCCCAACAAGCTCTAC  
 CAGCCTCCGGAGACGATCTTACAGCACTGGCCCAATGCCACCGGCCAAGGGGGAGCGCCTCTGAGG  
 TGGGAGAGCCGCCGAGGGAAGGTGGCGAGGATGAAGGAGGCCCTGGCCCACTTACCATTCCACACGGC  
 GCTGGTCCCAGTGAGGCCAGGACACCCCGCTGTTCCAGTACCTGAACCCCAAGGCTCTCTTTCCAC  
 ACTTCAGAGGAGATTTCCTTCCAGTGGAGGCTGTCAGAGAGGGGAAGAAAGAAAGAAAGGAGGCCCTC  
 CTGGACGGGGCCCTCCTGGATGGCGCAGGAGGGAAGAAGTCCGGCTGCCGACTTGAAGGTGCTGTGCTA  
 CCAGGAGCGCGGTCCAGAGGCACAGGACCGGCACCACTATGTCAGCTCCTACCTGGCCGGAGCCACC  
 AGCGCAGACAGGTACAGGATGTTCTGCGTTTCCAGAAGGAAGTCTCGCAAGCAAGATCTCTGAAGA  
 ATGACTTCACTGGGAGCAAGCGGCCCGGGCCACGAGAGAAAGCTGCAGCAGGAGCTCCAGAAAATGTG  
 CACGTGCAGCCCCAGCAGTTCAACAGACTGCACGTCTTTGAAAAAGTCTTTGAAGATATTTGTAACAGT  
 TCTTTGATATTTGGTGATCTCTTGAAAAAGTTAAGGATGAATATGAACTCTACATGGCAACGCTCCTGG  
 AGTCCCAGCCTGCAGCACAGTACGAGGCTCTTCTGGCTCAACTCAAGGCGCTGGGGCAGAGGCCGGTGAA  
 GACGGCGGACATGGATCTCGCCAGGGAAGAGCTGAGGATGCTCGTGACAGCCACAAAAGCAGCCCTGGAG  
 CAGAATGATAGACTCAGAAGTGAAGTGGAGTGGAGCTGGCATTGCTGCAGTCTGCAAGGAACGATCAG  
 AATCATCTGAGAAACATATAATTGATGAAAACCACTTACTCTTACTGAGAAGGTTGAAAAGAAGAGGTG  
 TGAATACTCAGTAAGTGGGATGAGATACAAGCTCTGAAAAAGAAATTAACAACACTTTGGTTCACT  
 GGAATTTAGATATCACTGAGAATAGGATTAAGCATAGAGCATGAAGCTATACAATTGAAAACAGAAA  
 ATATGATTTTAAAGAAGAAAATAAAAGGCCCTTTGAAAATTTATCAAGGAATTTGAAAATCAGAGGAAA  
 CAGAAGA

**ACGCGT**ACGCGGCCGCTCGAGCAGAACTCATCTCAGAAGAGGATCTGGCAGCAATGATATCCTGGATT  
 ACAAGGATGACGACGATAAGGTTTAA

**Protein Sequence:**

>RC205014 protein sequence  
 Red=Cloning site Green=Tags(s)

MAEEREPELYLKWKHCETPGVKTLGNLKHCEPVGKTLGNLKKLLNRLQKDHREDVYLYISGHLNPNKLY  
 QPPETILQHPNAHRPKGERASEVGEPPAGKVARMKALAHFTIHTALVPSEAQDTPLFRYLNPAQASLSH  
 TSEEDFLPVEAVREGKKEKGGPPGRRRREELRPLDLKVLVLYQYQAGSRGTRDRHHYVSSYLAGAT  
 SADRYRMFLRFQKEVLAKQDLLKNDFTGSKAAAGHERKLQQLQKMTCSPPQFNRLHVFEKVFEDICNS  
 SLIFGDLLKVKDEYELYMATLLESQPAAYEALLAQLKALGQRPVKTADMDLAREELRMLVTATKAAL  
 QNDRLRSELEMEALLQSAKERSESSEKHIIDENQLLTKVKKRCEILSKWDEIQALEKEIKTTLVHT  
 GISDITENRIKSIEHAIQLETENMILKKIKGPLEIYQGIKIRGNRR

**TR**TRPLEQKLISEEDLAANDILDYKDDDDKV

**Chromatograms:**

[https://cdn.origene.com/chromatograms/mk6438\\_f03.zip](https://cdn.origene.com/chromatograms/mk6438_f03.zip)

**Restriction Sites:**

Sgfl-MluI

**Cloning Scheme:**

**ACCN:** NM\_144980

**ORF Size:** 1407 bp

**OTI Disclaimer:** The molecular sequence of this clone aligns with the gene accession number as a point of reference only. However, individual transcript sequences of the same gene can differ through naturally occurring variations (e.g. polymorphisms), each with its own valid existence. This clone is substantially in agreement with the reference, but a complete review of all prevailing variants is recommended prior to use. [More info](#)

**OTI Annotation:** This clone was engineered to express the complete ORF with an expression tag. Expression varies depending on the nature of the gene.

**Components:** The ORF clone is ion-exchange column purified and shipped in a 2D barcoded Matrix tube containing 10ug of transfection-ready, dried plasmid DNA (reconstitute with 100 ul of water).

- Reconstitution Method:**
1. Centrifuge at 5,000xg for 5min.
  2. Carefully open the tube and add 100ul of sterile water to dissolve the DNA.
  3. Close the tube and incubate for 10 minutes at room temperature.
  4. Briefly vortex the tube and then do a quick spin (less than 5000xg) to concentrate the liquid at the bottom.
  5. Store the suspended plasmid at -20°C. The DNA is stable for at least one year from date of shipping when stored at -20°C.

**RefSeq:** [NM\\_144980.2](#)
**RefSeq Size:** 1852 bp

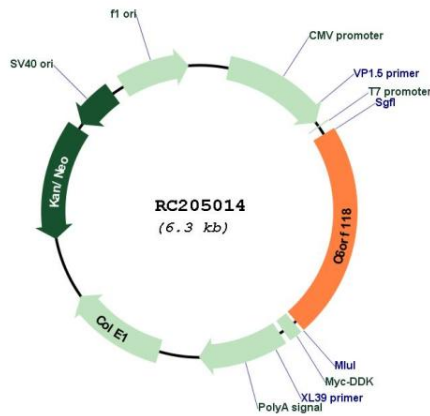
**RefSeq ORF:** 1410 bp

**Locus ID:** 168090

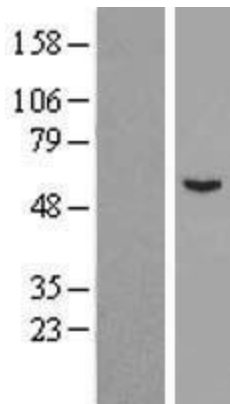
**UniProt ID:** [Q5T5N4](#)
**Cytogenetics:** 6q27

MW: 53.8 kDa

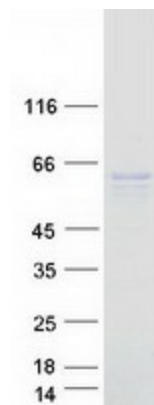
**Product images:**



Circular map for RC205014



Western blot validation of overexpression lysate (Cat# [LY408121]) using anti-DDK antibody (Cat# [TA50011-100]). Left: Cell lysates from untransfected HEK293T cells; Right: Cell lysates from HEK293T cells transfected with RC205014 using transfection reagent MegaTran 2.0 (Cat# [TT210002]).



Coomassie blue staining of purified C6orf118 protein (Cat# [TP305014]). The protein was produced from HEK293T cells transfected with C6orf118 cDNA clone (Cat# RC205014) using MegaTran 2.0 (Cat# [TT210002]).