

Product datasheet for **RC205008**

Tubulin (TUBA1B) (NM_006082) Human Tagged ORF Clone

Product data:

Product Type:	Expression Plasmids
Product Name:	Tubulin (TUBA1B) (NM_006082) Human Tagged ORF Clone
Tag:	Myc-DDK
Symbol:	Tubulin
Synonyms:	K-ALPHA-1
Mammalian Cell Selection:	Neomycin
Vector:	pCMV6-Entry (PS100001)
E. coli Selection:	Kanamycin (25 ug/mL)



[View online »](#)

ORF Nucleotide Sequence:

>RC205008 ORF sequence
 Red=Cloning site Blue=ORF Green=Tags(s)

TTTTGTAATACGACTCACTATAGGGCGGCCGGAATTCGTCGACTGGATCCGGTACCGAGGAGATCTGCC
 GCC**CGCATCGCC**

ATGCGTGAGTGCATCTCCATCCACGTTGGCCAGGCTGGTTCAGATTGGCAATGCCTGCTGGGAGCTCT
 ACTGCCTGGAACACGGCATCCAGCCGATGGCCAGATGCCAAGTGACAAGACCATTGGGGGAGGAGATGA
 CTCTTCAACACCTTCTTCAGTGAGACGGGCGCTGGCAAGCACGTGCCCGGGCTGTGTTGTAGACTTG
 GAACCCACAGTCATTGATGAAGTTCGCACTGGCACCTACCGCCAGCTCTCCACCCTGAGCAGCTCATCA
 CAGGCAAGGAAGATGCTGCCAATAACTATGCCGAGGGCACTACACCATTGGCAAGGAGATCATTGACCT
 TGTGTTGGACCGAATTCGCAAGCTGGCTGACCAGTGCACCGGTCTTCAGGGCTTCTTGGTTTTCCACAGC
 TTTGGTGGGGAACTGGTCTGGGTTACCTCCCTGCTCATGGAACGTCTCTCAGTTGATTATGGCAAGA
 AATCCAAGCTGGAGTTCTCCATTACCCGGCACCCAGGTTCCACAGCTGTAGTTGAGCCCTACAACCT
 CATCTCACCCACACCACCCTGGAGCACTCTGATTGTGCCTCATGGTAGACAATGAGCCATCTAT
 GACATCTGTCGTAGAAACCTCGATATCGAGCGCCAACCTACACTAACCTTAACCGCCTTATTAGCCAGA
 TTGTGTCCTCCATCACTGCTCCCTGAGATTTGATGGAGCCCTGAATGTTGACCTGACAGAATCCAGAC
 CAACCTGGTGCCCTACCCCGCATCCACTTCCCTCTGGCCACATATGCCCTGTCATCTCTGCTGAGAAA
 GCCTACCATGAACAGCTTCTGTAGCAGAGATCAACATGCTTGCTTTGAGCCAGCAACCATGAGTGA
 AATGTGACCCCTCGCCATGGTAAATACATGGCTTGCTGCCTGTTGTACCGTGGTACGTGGTTCCTCAAGA
 TGTCAATGCTGCCATTGCCACCATCAAACCAAGCGCAGCATCCAGTTTGTGGATTGGTGGCCCACTGGC
 TTCAAGTTGGCATCACTACCAGCCTCCACTGTGGTGCCTGGTGGAGACCTGGCAAGGTACAGAGAG
 CTGTGTGCATGCTGAGCAACACCACAGCCATTGCTGAGGCTGGGCTCGCCTGGACCACAAGTTGACAT
 GATGTATGCCAAGCGTGCCTTTGTTCACTGGTACGTGGGTGAGGGGATGGAGGAAGCGAGTTTTTCAGAG
 GCCCGTGAAGATATGGCTGCCCTTGAGAAGGATTATGAGGAGGTTGGTGTGGATTCTGTTGAAGGAGAG
 GTGAGGAAGAAGGAGAGGAATAC

ACGCGTACGCGGCCGCTCGAGCAGAACTCATCTCAGAAGAGGATCTGGCAGCAATGATATCCTGGATT
 ACAAGGATGACGACGATAAGGTTTAA

Protein Sequence:

>RC205008 protein sequence
 Red=Cloning site Green=Tags(s)

MRECISIHVQAGVQIGNACWELYLEHGIQPDGQMPQSDKTIGGGDDSFNTFFSETGAGKHVPRAVFVDL
 EPTVIDEVRTGTYRQLFHPEQLITGKEDAANNYARGHYTIGKEIDLVLDRIRKLADQCTGLQGFLVFHS
 FGGGTGSGFTSLLMERLSVDYGGKSKLEFSIYPAPQVSTAVVEPYNSILTTHTTLEHSDCAFMDNEAIY
 DICRRNLDIERPTYTNLNLISQIVSSITASLRFDGALNVDLTFQTNLVPYPRIHFLATYAPVISA
 AYHEQLSVAEITNACFEPANQMVKCDPRHGKYMCCLLYRGDVVPKDVNAAIATIKTKRSIQFVDWCPTG
 FKVGINYQPPTVVPGGDLAKVQRAVCMLSNNTTAAEAWARLDHKFDLMYAKRAFVHWYVGEEMEEGEFSE
 AREDMAALEKDYEEVGVDSVEGEGEEGEEY

TRTRPLEQKLISEEDLAANDILDYKDDDDKV

Chromatograms:

https://cdn.origene.com/chromatograms/mk6177_d11.zip

Restriction Sites:

Sgfl-Mlul

Cloning Scheme:


ACCN: NM_006082

ORF Size: 1353 bp

OTI Disclaimer: The molecular sequence of this clone aligns with the gene accession number as a point of reference only. However, individual transcript sequences of the same gene can differ through naturally occurring variations (e.g. polymorphisms), each with its own valid existence. This clone is substantially in agreement with the reference, but a complete review of all prevailing variants is recommended prior to use. [More info](#)

OTI Annotation: This clone was engineered to express the complete ORF with an expression tag. Expression varies depending on the nature of the gene.

Components: The ORF clone is ion-exchange column purified and shipped in a 2D barcoded Matrix tube containing 10ug of transfection-ready, dried plasmid DNA (reconstitute with 100 ul of water).

Reconstitution Method:

1. Centrifuge at 5,000xg for 5min.
2. Carefully open the tube and add 100ul of sterile water to dissolve the DNA.
3. Close the tube and incubate for 10 minutes at room temperature.
4. Briefly vortex the tube and then do a quick spin (less than 5000xg) to concentrate the liquid at the bottom.
5. Store the suspended plasmid at -20°C. The DNA is stable for at least one year from date of shipping when stored at -20°C.

RefSeq: [NM_006082.3](#)

RefSeq Size: 1771 bp

RefSeq ORF: 1356 bp

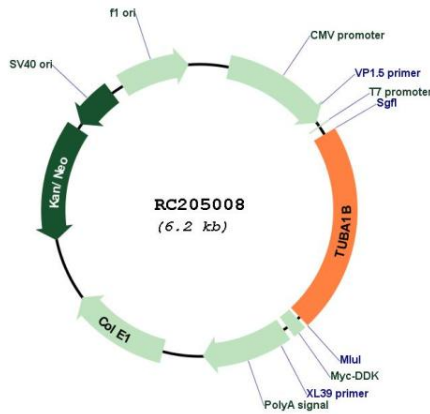
Locus ID: 10376

UniProt ID: [P68363](#)

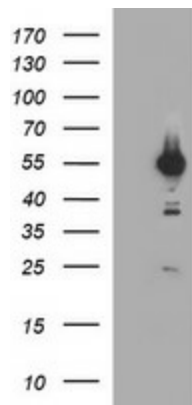
Cytogenetics: 12q13.12

Domains: tubulin
Protein Families: Druggable Genome
Protein Pathways: Gap junction, Pathogenic Escherichia coli infection
MW: 50.2 kDa
Gene Summary: Tubulin is the major constituent of microtubules. It binds two moles of GTP, one at an exchangeable site on the beta chain and one at a non-exchangeable site on the alpha chain. [UniProtKB/Swiss-Prot Function]

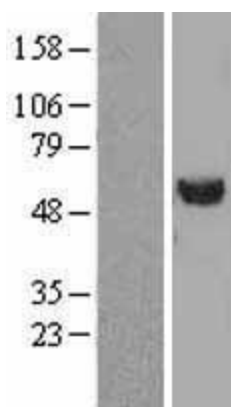
Product images:



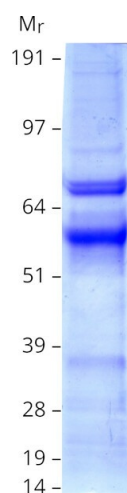
Circular map for RC205008



HEK293T cells were transfected with the pCMV6-ENTRY control (Cat# [PS100001], Left lane) or pCMV6-ENTRY TUBA1B (Cat# RC205008, Right lane) cDNA for 48 hrs and lysed. Equivalent amounts of cell lysates (5 ug per lane) were separated by SDS-PAGE and immunoblotted with anti-TUBA1B(Cat# [TA506582]). Positive lysates [LY401831] (100ug) and [LC401831] (20ug) can be purchased separately from OriGene.



Western blot validation of overexpression lysate (Cat# [LY401831]) using anti-DDK antibody (Cat# [TA50011-100]). Left: Cell lysates from untransfected HEK293T cells; Right: Cell lysates from HEK293T cells transfected with RC205008 using transfection reagent MegaTran 2.0 (Cat# [TT210002]).



Coomassie blue staining of purified TUBA1B protein (Cat# [TP305008]). The protein was produced from HEK293T cells transfected with TUBA1B cDNA clone (Cat# RC205008) using MegaTran 2.0 (Cat# [TT210002]).