

Product datasheet for **RC205005**

P2Y12 (P2RY12) (NM_022788) Human Tagged ORF Clone

Product data:

Product Type:	Expression Plasmids
Product Name:	P2Y12 (P2RY12) (NM_022788) Human Tagged ORF Clone
Tag:	Myc-DDK
Symbol:	P2Y12
Synonyms:	ADPG-R; BDPLT8; HORK3; P2T(AC); P2Y(12)R; P2Y(AC); P2Y(ADP); P2Y(cyc); P2Y12; SP1999
Mammalian Cell Selection:	Neomycin
Vector:	pCMV6-Entry (PS100001)
E. coli Selection:	Kanamycin (25 ug/mL)
ORF Nucleotide Sequence:	>RC205005 ORF sequence Red=Cloning site Blue=ORF Green=Tags(s)

TTTTGTAATACGACTCACTATAGGGCGCCGGAATTCGTCGACTGGATCCGGTACCGAGGAGATCTGCC
GCC**CGATCGCC**

ATGCAAGCCGTCGACAATCTCACCTCTGCGCCTGGGAACACCAGTCTGTGCACCAGAGACTACAAAATCA
CCCAGGTCCTCTCCACTGCTACACTGTCTGTTTTTTGTTGGACTTATCACAAATGGCCTGGCGAT
GAGGATTTTCTTCAAATCCGGAGTAAATCAAACCTTTATTATTTTCTTAAGAACACAGTCAATTTCTGAT
CTTCTCATGATTCTGACTTTTCCATTCAAATTTCTTAGTGATGCCAAACTGGGAACAGGACCACTGAGAA
CTTTTGTGTGCAAGTTACCTCCGTCATATTTTATTTTACAATGTATATCAGTATTTTCTTCTGGGACT
GATAACTATCGATCGCTACCAGAAGACCACCAGGCCATTTAAAACATCCAACCCAAAAATCTCTTGGGG
GCTAAGATTCTCTCTGTTGTCATCTGGGCATTCATGTTCTTACTCTTTGCCTAACATGATTCTGACCA
ACAGGCAGCCGAGAGACAAGAATGTGAAGAAATGCTCTTTCTTAAATCAGAGTTCGGTCTAGTCTGGCA
TGAAATAGTAAATTACATCTGTCAAGTCATTTTCTGGATTAATTTCTTAATTGTTATTGTATGTTATACA
CTCATTACAAAAGAACTGTACCGGTCATACGTAAGAACGAGGGGTGTAGGTAAAGTCCCCAGGAAAAAGG
TGAACGTCAAAGTTTTTATTATCATTGCTGTATTCTTTATTTGTTTTGTTCTTTCCATTTTGCCCGAAT
TCCTTACACCTGAGCCAAACCCGGGATGTCTTTGACTGCACTGCTGAAAATACTCTGTTCTATGTGAAA
GAGAGCACTCTGGTTAACTTCTTAAATGCATGCCTGGATCCGTTTCATCTATTTTTTCTTTGCAAGT
CCTTCAGAAATTCCTTGATAAGTATGCTGAAGTGCCCAATTCTGCAACATCTCTGTCCCAGGACAATAG
GAAAAAGAACAGGATGGTGGTGACCCAATGAAGAGACTCCAATG

ACGCGTACGCGGCCGCTCGAGCAGAAACTCATCTCAGAAGAGGATCTGGCAGCAATGATATCCTGGATT
ACAAGGATGACGACGATAAGGTTTAA



[View online »](#)

Protein Sequence: >RC205005 protein sequence
Red=Cloning site Green=Tags(s)

MQAVDNLTSAPGNTSLCTRDKITQVLFPLLYTVLFFVGLITNGLAMRIFFQIRSKSNFIIFLKNTVISD
 LLMILTFPFKILSDAKLGTGPLRTFVCQVTSVIFYFTMYISISFLGLITIDRYQKTRPFKTSNPKNLLG
 AKILSVVIWAFMFLLSLPNMILNTRQPRDKNVKKSFLKSEFGLVWHEIVNYICQVIFWINFLIVIVCYT
 LITKELYRSYVRTRGVGKVPKRVNVKVFIIIIVFFICFVPFHARIPYTLSTQTRDVFDCAENTLFFYVK
 ESTLWLTSLNACLDPFIYFFLCKSFRNSLISMLKCPNSATLSLQDNRRKKEQDGGDPNEETPM

TRTRPLEQKLISEEDLAANDILDYKDDDDKV

Chromatograms: https://cdn.origene.com/chromatograms/mk6067_h09.zip

Restriction Sites: SgfI-MluI

Cloning Scheme:



ACCN: NM_022788

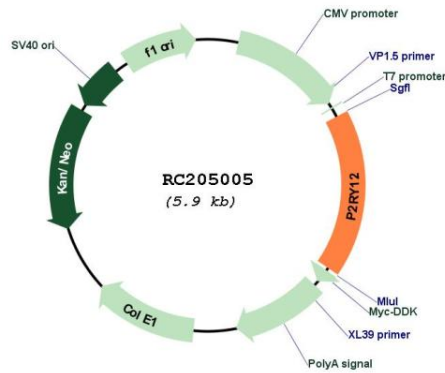
ORF Size: 1026 bp

OTI Disclaimer: Due to the inherent nature of this plasmid, standard methods to replicate additional amounts of DNA in E. coli are highly likely to result in mutations and/or rearrangements. Therefore, OriGene does not guarantee the capability to replicate this plasmid DNA. Additional amounts of DNA can be purchased from OriGene with batch-specific, full-sequence verification at a reduced cost. Please contact our customer care team at custsupport@origene.com or by calling 301.340.3188 option 3 for pricing and delivery.

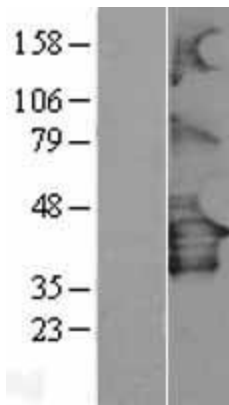
The molecular sequence of this clone aligns with the gene accession number as a point of reference only. However, individual transcript sequences of the same gene can differ through naturally occurring variations (e.g. polymorphisms), each with its own valid existence. This clone is substantially in agreement with the reference, but a complete review of all prevailing variants is recommended prior to use. [More info](#)

OTI Annotation:	This clone was engineered to express the complete ORF with an expression tag. Expression varies depending on the nature of the gene.
Components:	The ORF clone is ion-exchange column purified and shipped in a 2D barcoded Matrix tube containing 10ug of transfection-ready, dried plasmid DNA (reconstitute with 100 ul of water).
Reconstitution Method:	<ol style="list-style-type: none">1. Centrifuge at 5,000xg for 5min.2. Carefully open the tube and add 100ul of sterile water to dissolve the DNA.3. Close the tube and incubate for 10 minutes at room temperature.4. Briefly vortex the tube and then do a quick spin (less than 5000xg) to concentrate the liquid at the bottom.5. Store the suspended plasmid at -20°C. The DNA is stable for at least one year from date of shipping when stored at -20°C.
Note:	Plasmids are not sterile. For experiments where strict sterility is required, filtration with 0.22um filter is required.
RefSeq:	NM_022788.2
RefSeq Size:	2318 bp
RefSeq ORF:	1029 bp
Locus ID:	64805
UniProt ID:	Q9H244
Cytogenetics:	3q25.1
Domains:	7tm_1
Protein Families:	Druggable Genome, GPCR, Transmembrane
MW:	39.4 kDa
Gene Summary:	The product of this gene belongs to the family of G-protein coupled receptors. This family has several receptor subtypes with different pharmacological selectivity, which overlaps in some cases, for various adenosine and uridine nucleotides. This receptor is involved in platelet aggregation, and is a potential target for the treatment of thromboembolisms and other clotting disorders. Mutations in this gene are implicated in bleeding disorder, platelet type 8 (BDPLT8). Alternative splicing results in multiple transcript variants of this gene. [provided by RefSeq, Jul 2013]

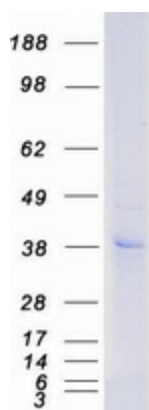
Product images:



Circular map for RC205005



Western blot validation of overexpression lysate (Cat# [LY403587]) using anti-DDK antibody (Cat# [TA50011-100]). Left: Cell lysates from untransfected HEK293T cells; Right: Cell lysates from HEK293T cells transfected with [RC213478] using transfection reagent MegaTran 2.0 (Cat# [TT210002]).



Coomassie blue staining of purified P2RY12 protein (Cat# [TP305005]). The protein was produced from HEK293T cells transfected with P2RY12 cDNA clone (Cat# RC205005) using MegaTran 2.0 (Cat# [TT210002]).