

## Product datasheet for **RC205004**

### CLPS (NM\_001832) Human Tagged ORF Clone

#### Product data:

**Product Type:** Expression Plasmids  
**Product Name:** CLPS (NM\_001832) Human Tagged ORF Clone  
**Tag:** Myc-DDK  
**Symbol:** CLPS  
**Mammalian Cell Selection:** Neomycin  
**Vector:** pCMV6-Entry (PS100001)  
**E. coli Selection:** Kanamycin (25 ug/mL)  
**ORF Nucleotide Sequence:** >RC205004 ORF sequence  
 Red=Cloning site Blue=ORF Green=Tags(s)

TTTTGTAATACGACTCACTATAGGGCGGCCGGAATTCGTCGACTGGATCCGGTACCGAGGAGATCTGCC  
 GCC**CGATCGCC**

ATGGAGAAGATCCTGATCCTCCTGCTTGTGCGCCCTCTCTGTGGCCTATGCAGCTCCTGGCCCCGGGGGA  
 TCATTATCAACCTGGAGAACGGTGAGCTCTGCATGAATAGTGCCCAAGTGAAGAGCAATTGCTGCCAGCA  
 TTCAAGTGGCTGGGCCCTGGCCGCTGCACATCCATGGCCAGCGAGAACAGCGAGTGCTCTGTCAAGACG  
 CTCTATGGGATTTACTACAAGTGCCCTGTGAGCGTGGCCTGACCTGTGAGGGAGACAAGACCATCGTGG  
 GCTCCATCACCAACCAACTTTGGCATCTGCCATGACGCTGGACGCTCCAAGCAG

**ACGCGT**ACGCGGCCGCTCGAGCAGAACTCATCTCAGAAGAGGATCTGGCAGCAAATGATATCCTGGATT  
 ACAAGGATGACGACGATAAGGTTTAA

**Protein Sequence:** >RC205004 protein sequence  
 Red=Cloning site Green=Tags(s)

MEKILILLVALSVAYAAPGPRGIIINLENGELCMNSAQCKSNCCQHSSALGLARCTSMASENSECSVKT  
 LYGIYYKPCERGLTCEGDKTIVGSITNTNFGICHDAGRSKQ

**TR**TRPLE**QKLISEEDLA**ANDILDYKDDDDKV

**Chromatograms:** [https://cdn.origene.com/chromatograms/mk6067\\_e07.zip](https://cdn.origene.com/chromatograms/mk6067_e07.zip)

**Restriction Sites:** SgfI-MluI



[View online »](#)

## Cloning Scheme:



ACCN: NM\_001832

ORF Size: 336 bp

OTI Disclaimer: The molecular sequence of this clone aligns with the gene accession number as a point of reference only. However, individual transcript sequences of the same gene can differ through naturally occurring variations (e.g. polymorphisms), each with its own valid existence. This clone is substantially in agreement with the reference, but a complete review of all prevailing variants is recommended prior to use. [More info](#)

OTI Annotation: This clone was engineered to express the complete ORF with an expression tag. Expression varies depending on the nature of the gene.

Components: The ORF clone is ion-exchange column purified and shipped in a 2D barcoded Matrix tube containing 10ug of transfection-ready, dried plasmid DNA (reconstitute with 100 ul of water).

Reconstitution Method:

1. Centrifuge at 5,000xg for 5min.
2. Carefully open the tube and add 100ul of sterile water to dissolve the DNA.
3. Close the tube and incubate for 10 minutes at room temperature.
4. Briefly vortex the tube and then do a quick spin (less than 5000xg) to concentrate the liquid at the bottom.
5. Store the suspended plasmid at -20°C. The DNA is stable for at least one year from date of shipping when stored at -20°C.

Note: Plasmids are not sterile. For experiments where strict sterility is required, filtration with 0.22um filter is required.

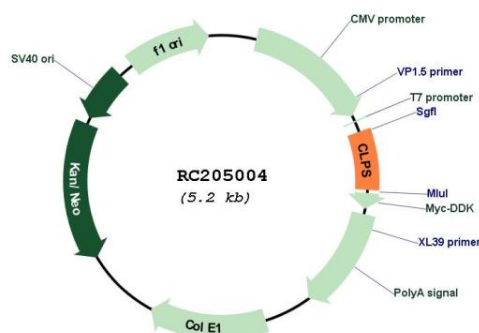
RefSeq: [NM\\_001832.4](#)

RefSeq Size: 578 bp

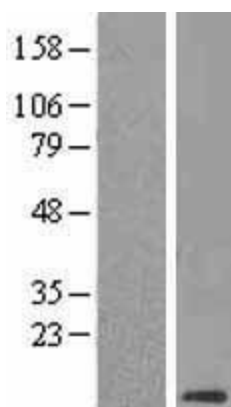
RefSeq ORF:	339 bp
Locus ID:	1208
UniProt ID:	<a href="#">P04118</a>
Cytogenetics:	6p21.31
Protein Families:	Secreted Protein, Transmembrane
MW:	12 kDa

**Gene Summary:** The protein encoded by this gene is a cofactor needed by pancreatic lipase for efficient dietary lipid hydrolysis. It binds to the C-terminal, non-catalytic domain of lipase, thereby stabilizing an active conformation and considerably increasing the overall hydrophobic binding site. The gene product allows lipase to anchor noncovalently to the surface of lipid micelles, counteracting the destabilizing influence of intestinal bile salts. This cofactor is only expressed in pancreatic acinar cells, suggesting regulation of expression by tissue-specific elements. Three transcript variants encoding different isoforms have been found for this gene. [provided by RefSeq, Nov 2011]

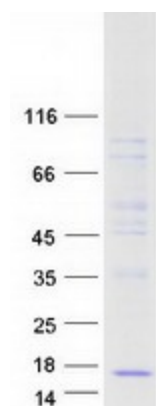
## Product images:



Circular map for RC205004



Western blot validation of overexpression lysate (Cat# [LY419722]) using anti-DDK antibody (Cat# [TA50011-100]). Left: Cell lysates from untransfected HEK293T cells; Right: Cell lysates from HEK293T cells transfected with RC205004 using transfection reagent MegaTran 2.0 (Cat# [TT210002]).



Coomassie blue staining of purified CLPS protein (Cat# [TP305004]). The protein was produced from HEK293T cells transfected with CLPS cDNA clone (Cat# RC205004) using MegaTran 2.0 (Cat# [TT210002]).