

## Product datasheet for **RC205003**

### **RDH11 (NM\_016026) Human Tagged ORF Clone**

#### Product data:

Product Type:	Expression Plasmids
Product Name:	RDH11 (NM_016026) Human Tagged ORF Clone
Tag:	Myc-DDK
Symbol:	RDH11
Synonyms:	ARSDR1; CGI82; HCBP12; MDT1; PSDR1; RALR1; RDJCSS; SCALD; SDR7C1
Mammalian Cell Selection:	Neomycin
Vector:	pCMV6-Entry (PS100001)
E. coli Selection:	Kanamycin (25 ug/mL)
ORF Nucleotide Sequence:	>RC205003 ORF sequence Red=Cloning site Blue=ORF Green=Tags(s)

TTTTGTAATACGACTCACTATAGGGCGGCCGGAATTCGTCGACTGGATCCGGTACCGAGGAGATCTGCC  
GCC**CGATCGCC**

ATGGTTGAGCTCATGTTCCCGCTGTTGCTCCTCCTTCTGCCCTTCTTCTGTATATGGCTGCGCCCCAAA  
TCAGGAAAATGCTGTCCAGTGGGGTGTGTACATCAACTGTTGAGCTTCTGGGAAAGTAGTTGTGGTCAC  
AGGAGCTAATACAGGTATCGGGAAGGAGACAGCCAAAGAGCTGGCTCAGAGAGGAGCTCGAGTATATTTA  
GCTTGCCGGGATGTGAAAAGGGGAATTGGTGGCCAAAGAGATCCAGACCACGACAGGGAACCAGCAGG  
TGTTGGTGGGAAACTGGACCTGTCTGATACTAAGTCTATTCGAGCTTTTGCTAAGGGCTTCTTAGCTGA  
GGAAAAGCACCTCCACGTTTTGATCAACAATGCAGGAGTGATGATGTGTCGACTCGAAGACAGCAGAT  
GGCTTTGAGATGCACATAGGAGTCAACCACTTGGGTCACCTTCTCCTAACCCTATCTGCTGCTAGAGAAAC  
TAAAGGAATCAGCCCCATCAAGGATAGTAAATGTGTCTTCCCTCGCACATCACCTGGGAAGGATCCACTT  
CCATAACCTGCAGGGCGAGAAAATTCTACAATGCAGGCCTGGCCTACTGTACAGCAAGCTAGCCAACATC  
CTCTTCACCCAGGAAGTGGCCGGAGACTAAAAGGCTCTGGCGTTACGACGTATTCTGTACACCTGGCA  
CAGTCCAATCTGAACTGGTTCGGCACTCATCTTTCATGAGATGGATGTGGTGGCTTTTCTCTTTTTCAT  
CAAGACTCCTCAGCAGGGAGCCAGACCAGCCTGCACTGTGCCTTAACAGAAGGTCTTGAGATTCTAAGT  
GGGAATCATTTTCAGTACTGTGATGTGGCATGGGTCTCTGCCAAGCTCGTAATGAGACTATAGCAAGGC  
GGCTGTGGGACGTCAGTTGTGACCTGCTGGGCCTCTCAATAGAC

**ACGCGT**ACGCGGCCGCTCGAGCAGAAACTCATCTCAGAAGAGGATCTGGCAGCAAATGATATCCTGGATT  
ACAAGGATGACGACGATAAGGTTTAA



[View online »](#)



**Reconstitution Method:**

1. Centrifuge at 5,000xg for 5min.
2. Carefully open the tube and add 100ul of sterile water to dissolve the DNA.
3. Close the tube and incubate for 10 minutes at room temperature.
4. Briefly vortex the tube and then do a quick spin (less than 5000xg) to concentrate the liquid at the bottom.
5. Store the suspended plasmid at -20°C. The DNA is stable for at least one year from date of shipping when stored at -20°C.

**Note:** Plasmids are not sterile. For experiments where strict sterility is required, filtration with 0.22um filter is required.

**RefSeq:** [NM\\_016026.4](#)

**RefSeq Size:** 2587 bp

**RefSeq ORF:** 957 bp

**Locus ID:** 51109

**UniProt ID:** [Q8TC12](#)

**Cytogenetics:** 14q24.1

**Domains:** adh\_short

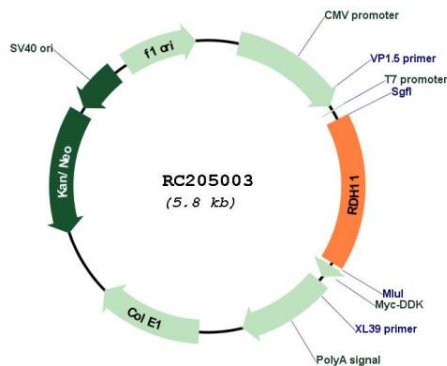
**Protein Families:** Druggable Genome

**Protein Pathways:** Metabolic pathways, Retinol metabolism

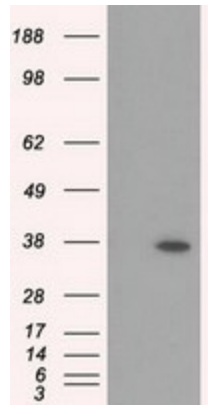
**MW:** 35.4 kDa

**Gene Summary:** The protein encoded by this gene is an NADPH-dependent retinal reductase and a short-chain dehydrogenase/reductase. The encoded protein has no steroid dehydrogenase activity. [provided by RefSeq, Nov 2011]

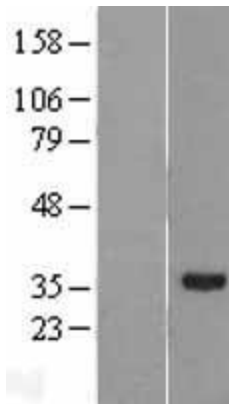
### Product images:



Circular map for RC205003



HEK293T cells were transfected with the pCMV6-ENTRY control (Cat# [PS100001], Left lane) or pCMV6-ENTRY RDH11 (Cat# RC205003, Right lane) cDNA for 48 hrs and lysed. Equivalent amounts of cell lysates (5 ug per lane) were separated by SDS-PAGE and immunoblotted with anti-RDH11 (Cat# [TA501053]). Positive lysates [LY402488] (100ug) and [LC402488] (20ug) can be purchased separately from OriGene.



Western blot validation of overexpression lysate (Cat# [LY402488]) using anti-DDK antibody (Cat# [TA50011-100]). Left: Cell lysates from untransfected HEK293T cells; Right: Cell lysates from HEK293T cells transfected with RC205003 using transfection reagent MegaTran 2.0 (Cat# [TT210002]).



Coomassie blue staining of purified RDH11 protein (Cat# [TP305003]). The protein was produced from HEK293T cells transfected with RDH11 cDNA clone (Cat# RC205003) using MegaTran 2.0 (Cat# [TT210002]).