

## Product datasheet for **RC204995**

### ETV3 (NM\_005240) Human Tagged ORF Clone

#### Product data:

Product Type: Expression Plasmids

Product Name: ETV3 (NM\_005240) Human Tagged ORF Clone

Tag: Myc-DDK

Symbol: ETV3

Synonyms: METS; PE-1; PE1

Mammalian Cell Selection: Neomycin

Vector: pCMV6-Entry (PS100001)

E. coli Selection: Kanamycin (25 ug/mL)

ORF Nucleotide Sequence: >RC204995 ORF sequence  
Red=Cloning site Blue=ORF Green=Tags(s)

TTTTGTAATACGACTCACTATAGGGCGGCCGGAATTCGTCGACTGGATCCGGTACCGAGGAGATCTGCC  
GCC**CGATCGCC**

ATGAAAGCCGGCTGTAGCATCGTGGAAAAGCCAGAAGGAGGTGGAGGTATCAGTTTCCTGACTGGCCCT  
ACAAAACAGAGTCATCCCAGGCTCCCGGCAGATCCAGCTGTGGCACTTCATCCTGGAGCTGCTGCAGAA  
GGAAGAGTTCGCCATGTCATCGCCTGGCAGCAGGAGAGTACGGGGAATTTGTCATCAAGGATCCAGAT  
GAGGTGGCCCGCCTCTGGGGCCGAGGAAATGCAAACCACAGATGAATTATGACAAGCTGAGCCGGGCC  
TCAGATACTATTACAACAAGAGGATCCTTCATAAAACAAAAGGAAAAGATTTACCTATAAATTTAACTT  
CAACAAGCTGGTATGCCAACTACCCATTCATCAACATTCGGTCAAGTGGAAGATACAACTCTTTTG  
GTAGGGAAT

**ACGCGT**ACGCGGCCGCTCGAGCAGAACTCATCTCAGAAGAGGATCTGGCAGCAAATGATATCCTGGATT  
ACAAGGATGACGACGATAAGGTTTAA

Protein Sequence: >RC204995 protein sequence  
Red=Cloning site Green=Tags(s)

MKAGCSIVEKPEGGGGYQFPDWAYKTESSPGSRQIQLWHFIELELLQKEEFRHVIWQQGEYGEFVIKDPD  
EVARLWGRRKCKPQMNYDKLSRALRYYYNKRILHKTGKRFTYKFNFKLVMPNYPFINIRSSGKIQTLL  
VGN

**TR**TRPLEQKLISEEDLAANDILDYKDDDDKV

Chromatograms: [https://cdn.origene.com/chromatograms/mk6426\\_h04.zip](https://cdn.origene.com/chromatograms/mk6426_h04.zip)



[View online >](#)

Restriction Sites: SgfI-MluI

Cloning Scheme:



ACCN: NM\_005240

ORF Size: 429 bp

OTI Disclaimer: The molecular sequence of this clone aligns with the gene accession number as a point of reference only. However, individual transcript sequences of the same gene can differ through naturally occurring variations (e.g. polymorphisms), each with its own valid existence. This clone is substantially in agreement with the reference, but a complete review of all prevailing variants is recommended prior to use. [More info](#)

OTI Annotation: This clone was engineered to express the complete ORF with an expression tag. Expression varies depending on the nature of the gene.

Components: The ORF clone is ion-exchange column purified and shipped in a 2D barcoded Matrix tube containing 10ug of transfection-ready, dried plasmid DNA (reconstitute with 100 ul of water).

Reconstitution Method:

1. Centrifuge at 5,000xg for 5min.
2. Carefully open the tube and add 100ul of sterile water to dissolve the DNA.
3. Close the tube and incubate for 10 minutes at room temperature.
4. Briefly vortex the tube and then do a quick spin (less than 5000xg) to concentrate the liquid at the bottom.
5. Store the suspended plasmid at -20°C. The DNA is stable for at least one year from date of shipping when stored at -20°C.

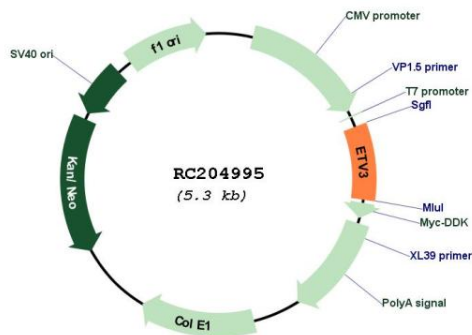
RefSeq: [NM\\_005240.2](#)

RefSeq Size: 1443 bp

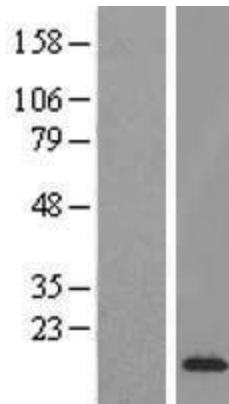
RefSeq ORF: 432 bp

Locus ID: 2117

**UniProt ID:** [P41162](#)  
**Cytogenetics:** 1q23.1  
**Protein Families:** Transcription Factors  
**MW:** 16.9 kDa  
**Gene Summary:** Transcriptional repressor that contribute to growth arrest during terminal macrophage differentiation by repressing target genes involved in Ras-dependent proliferation. Represses MMP1 promoter activity.[UniProtKB/Swiss-Prot Function]

**Product images:**


Circular map for RC204995



Western blot validation of overexpression lysate (Cat# [LY417429]) using anti-DDK antibody (Cat# [TA50011-100]). Left: Cell lysates from untransfected HEK293T cells; Right: Cell lysates from HEK293T cells transfected with RC204995 using transfection reagent MegaTran 2.0 (Cat# [TT210002]).