

Product datasheet for RC204992

S100A10 (NM_002966) Human Tagged ORF Clone

Product data:

Product Type: Expression Plasmids
Product Name: S100A10 (NM_002966) Human Tagged ORF Clone
Tag: Myc-DDK
Symbol: S100A10
Synonyms: 42C; ANX2L; ANX2LG; CAL1L; Ca[1]; CLP11; GP11; p10; P11
Mammalian Cell Selection: Neomycin
Vector: pCMV6-Entry (PS100001)
E. coli Selection: Kanamycin (25 ug/mL)
ORF Nucleotide Sequence: >RC204992 ORF sequence
 Red=Cloning site Blue=ORF Green=Tags(s)

TTTTGTAATACGACTCACTATAGGGCGGCCGGAATTCGTCGACTGGATCCGGTACCGAGGAGATCTGCC
GCC**CGATCGCC**

ATGCCATCTCAAATGGAACACGCCATGAAACCATGATGTTTACATTTACAAAATTCGCTGGGGATAAAG
GCTACTTAACAAAGGAGGACCTGAGAGTACTCATGGAAAAGGAGTTCCTGGATTTTGGAAAATCAAAA
AGACCCCTGGCTGTGGACAAAATAATGAAGGACCTGGACCAGTGTAGAGATGGCAAAGTGGGCTCCAG
AGCTTCTTTCCCTAATTGCGGGCCTCACCATTGCATGCAATGACTATTTGTAGTACACATGAAGCAGA
AGGAAAGAAG

ACGCGTACGCGGCCGCTCGAGCAGAAACTCATCTCAGAAGAGGATCTGGCAGCAAATGATATCCTGGATT
ACAAGGATGACGACGATAAGGTTTAA

Protein Sequence: >RC204992 protein sequence
 Red=Cloning site Green=Tags(s)
 MPSQMEHAMETMMFTFHKFAGDKGYLTKEDLRVLMKEFPGFLENQKDPLAVDKIMKDLQCRDGKVGFG
SFFSLIAGLTIACNDYFVVMKQKGGK

TRTRPLEQKLISEEDLAANDILDYKDDDDKV

Chromatograms: https://cdn.origene.com/chromatograms/mk6061_c07.zip

Restriction Sites: SgfI-MluI



[View online »](#)

Cloning Scheme:


ACCN: NM_002966

ORF Size: 291 bp

OTI Disclaimer: The molecular sequence of this clone aligns with the gene accession number as a point of reference only. However, individual transcript sequences of the same gene can differ through naturally occurring variations (e.g. polymorphisms), each with its own valid existence. This clone is substantially in agreement with the reference, but a complete review of all prevailing variants is recommended prior to use. [More info](#)

OTI Annotation: This clone was engineered to express the complete ORF with an expression tag. Expression varies depending on the nature of the gene.

Components: The ORF clone is ion-exchange column purified and shipped in a 2D barcoded Matrix tube containing 10ug of transfection-ready, dried plasmid DNA (reconstitute with 100 ul of water).

- Reconstitution Method:**
1. Centrifuge at 5,000xg for 5min.
 2. Carefully open the tube and add 100ul of sterile water to dissolve the DNA.
 3. Close the tube and incubate for 10 minutes at room temperature.
 4. Briefly vortex the tube and then do a quick spin (less than 5000xg) to concentrate the liquid at the bottom.
 5. Store the suspended plasmid at -20°C. The DNA is stable for at least one year from date of shipping when stored at -20°C.

RefSeq: [NM_002966.3](#)

RefSeq Size: 1069 bp

RefSeq ORF: 294 bp

Locus ID: 6281

UniProt ID: [P60903](#)

Cytogenetics: 1q21.3

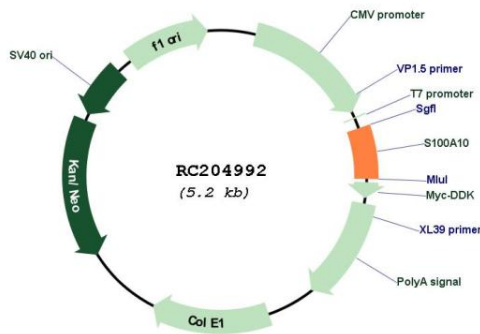
Domains: S_100

Protein Families: Transmembrane

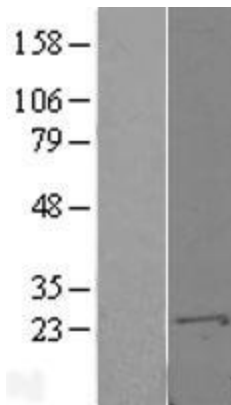
MW: 11.2 kDa

Gene Summary: The protein encoded by this gene is a member of the S100 family of proteins containing 2 EF-hand calcium-binding motifs. S100 proteins are localized in the cytoplasm and/or nucleus of a wide range of cells, and involved in the regulation of a number of cellular processes such as cell cycle progression and differentiation. S100 genes include at least 13 members which are located as a cluster on chromosome 1q21. This protein may function in exocytosis and endocytosis. [provided by RefSeq, Jul 2008]

Product images:



Circular map for RC204992



Western blot validation of overexpression lysate (Cat# [LY401038]) using anti-DDK antibody (Cat# [TA50011-100]). Left: Cell lysates from untransfected HEK293T cells; Right: Cell lysates from HEK293T cells transfected with RC204992 using transfection reagent MegaTran 2.0 (Cat# [TT210002]).