

Product datasheet for **RC204989**

C22orf28 (RTCB) (NM_014306) Human Tagged ORF Clone

Product data:

Product Type:	Expression Plasmids
Product Name:	C22orf28 (RTCB) (NM_014306) Human Tagged ORF Clone
Tag:	Myc-DDK
Symbol:	C22orf28
Synonyms:	C22orf28; DJ149A16.6; FAAP; HSPC117
Mammalian Cell Selection:	Neomycin
Vector:	pCMV6-Entry (PS100001)
E. coli Selection:	Kanamycin (25 ug/mL)



[View online »](#)

ORF Nucleotide Sequence:

>RC204989 ORF sequence
 Red=Cloning site Blue=ORF Green=Tags(s)

TTTTGTAATACGACTCACTATAGGGCGGCCGGAATTCGTCGACTGGATCCGGTACCGAGGAGATCTGCC
 GCC**CGGATCGCC**

ATGAGTCGCAGCTATAATGATGAGCTGCAGTCTTGGAGAAGATCAATAAAAAGCTGCTGGAGGATCAAGA
 AGGGCTTCGTGCCAACATGCAGGTTGAAGGTGTTTTCTATGTGAATGATGCTCTGGAGAAATTGATGTT
 TGAGGAATTAAGGAATGCCTGTCGAGGTGGTGGTGGTGGCTTCTGCCAGCCATGAAACAGATTGGC
 AATGTGGCAGCCCTGCCTGGAATTGTTTCATCGATCTATTGGGCTTCTGATGTCCATTGAGGATATGGGT
 TTGCTATTGGGAACATGGCAGCCTTTGATATGAATGACCTGAAGCAGTAGTATCCCCAGGTGGTGTCCG
 GTTTGACATCAACTGTGGTGTCCGCTTGCTAAGAACCAATTTAGATGAAAGTGATGTCCAGCCTGTGAAG
 GAGCAACTGCCAAGCTATGTTTGACCACATTCCTGTTGGGTGGGTCAAAGGTGCATCCCAATGA
 ATGCCAAAGACTTGGAGGAGCCTTGGAGATGGGGTGGACTGGTCTTAAGAGAAGGGTATGCCTGGGC
 TGAAGACAAGGAGCACTGCGAGGAGTACGGAAGGATGCTGCAGGCTGACCCCAATAAAGTTTCTGCAAGG
 CGGAAGAAAAGAGGCCTTCTCAGTTGGGGACCTGGGAGCAGGCAACCATTATGCAGAAATCCAGGTTG
 TGGATGAGATTTCAATGAGTATGCTGCTAAAAAATGGGCATCGACCATAAGGGACAGGTGTGTGTGAT
 GATCCACAGTGGAAAGCAGAGGCTTGGGCCACCAAGTAGCCACAGATGCGCTGGTAGCTATGGAGAAGGCC
 ATGAAGAGAGACAAGATTATAGTCAATGATCGGCAGTTGGCTTGTGCTCGAATCGCTTCCCAGAGGGTC
 AAGACTATCTGAAGGGAATGGCAGCTGCTGGAACTATGCCTGGGTCAACCGCTCTTCCATGACCTTCTT
 AACCCGTCAGGCTTTCGCCAAGGTCTTCAACACAACCCCTGATGACTTGGACCTACATGTGATTTATGAT
 GTTTCTCACAACATTGCCAAAGTGGAGCAGCATGTGGTGGACGGAAGGAACGGACACTGTTAGTACACA
 GGAAGGGATCCACCCGCGCTTCCCTCACCATCCCCTCATTGCTGTTGATTACCAACTCACTGGACA
 GCCAGTGTCTATTGGTGGCACCATGGGAACCTGTAGTTATGTTCTTACTGGCACTGAACAGGGCATGACT
 GAGACCTTTGGAACAACCTGTCATGGAGCGGGCCTGCATTGTCCCGAGCAAAATCTCGACGTAATTTAG
 ATTTCCAGGATGTCTTAGACAAATTGGCAGATATGGGAATTGCGATCCGTGTTGCCTCACCCAAACTGGT
 TATGGAAGAGGCTCCTGAGTCTATAAGAATGTGACAGATGTGGTAAATACCTGCCATGATGCTGGAATC
 AGCAAGAAAGCCATTAACCTGAGACCAATTGCTGTGATCAAAGGA

**ACGGTACGGCGCCGCTCGAGCAGAAACTCATCTCAGAAGAGGATCTGGCAGCAATGATATCCTGGATT
 ACAAGGATGACGACGATAAGGTTTAA**

Protein Sequence:

>RC204989 protein sequence
 Red=Cloning site Green=Tags(s)

MSRSYNDELQFLEKINKNCWRIKKGFVPMNQVEGVFYVNDALAKLMFEELRNACRGGVGGFLPAMKQIG
 NVAALPGIVHRSIGLPDVHSGYGF AIGNMAAFDMNDPEAVVSPGGVGF DINCVRLLRNLDES DVQPVK
 EQLAQAMFDHIPVGVGSKGVIPMNAKDLEEALMGVDWDLREGYAWAEDKEHCEEYGRMLQADPNKVSAR
 AKKRGLPQLGTLGAGNHYAEIQVVDEIFNEYAAKKMGIDHKGQVCVMIHSGSRGLGHQVATDALVAMEKA
 MKRDKIIVNDRQLACARIASPEGQDYLKGMAGNYAWVNRSSMTFLTRQAFKVFNTTPDDLHLVYID
 VSHNIAKVEQHVVVDGKERTLLVHRKGSTRAFPPHPLIAVDYQLTGQPVLIIGGTMGTCSYVLTGTEQGMT
 ETFGTTCHGAGRALSRAKSRNLDQVDLKLADMGIAIRVASPKLVMEEAPESYKNVTDVVNTCHDAGI
 SKKAIKLRPIAVIKG

TRTRPLEQKLI SEEDLAANDILDYKDDDDKV

Chromatograms:

https://cdn.origene.com/chromatograms/mk6175_a07.zip

Restriction Sites:

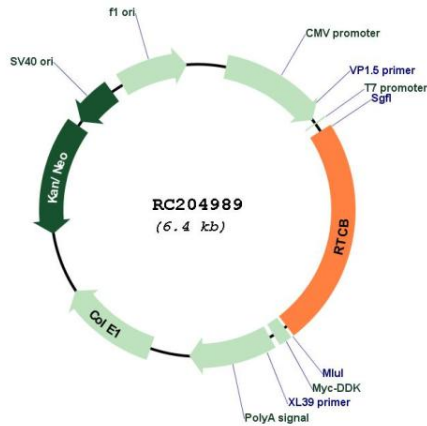
Sgfl-Mlul

Domains: UPF0027

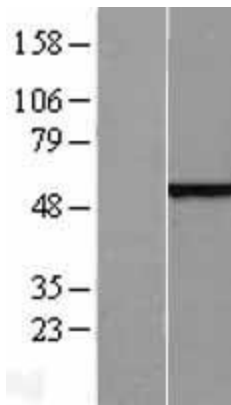
MW: 55.2 kDa

Gene Summary: Catalytic subunit of the tRNA-splicing ligase complex that acts by directly joining spliced tRNA halves to mature-sized tRNAs by incorporating the precursor-derived splice junction phosphate into the mature tRNA as a canonical 3',5'-phosphodiester. May act as an RNA ligase with broad substrate specificity, and may function toward other RNAs. [UniProtKB/Swiss-Prot Function]

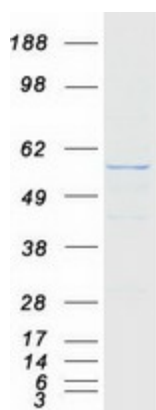
Product images:



Circular map for RC204989



Western blot validation of overexpression lysate (Cat# [LY402309]) using anti-DDK antibody (Cat# [TA50011-100]). Left: Cell lysates from untransfected HEK293T cells; Right: Cell lysates from HEK293T cells transfected with RC204989 using transfection reagent MegaTran 2.0 (Cat# [TT210002]).



Coomassie blue staining of purified RTCB protein (Cat# [TP304989]). The protein was produced from HEK293T cells transfected with RTCB cDNA clone (Cat# RC204989) using MegaTran 2.0 (Cat# [TT210002]).