

Product datasheet for RC204988

Annexin A2 (ANXA2) (NM_004039) Human Tagged ORF Clone

Product data:

Product Type:	Expression Plasmids
Product Name:	Annexin A2 (ANXA2) (NM_004039) Human Tagged ORF Clone
Tag:	Myc-DDK
Symbol:	Annexin A2
Synonyms:	ANX2; ANX2L4; CAL1H; HEL-S-270; LIP2; LPC2; LPC2D; P36; PAP-IV
Mammalian Cell Selection:	Neomycin
Vector:	pCMV6-Entry (PS100001)
E. coli Selection:	Kanamycin (25 ug/mL)
ORF Nucleotide Sequence:	>RC204988 ORF sequence Red=Cloning site Blue=ORF Green=Tags(s)

TTTTGTAATACGACTCACTATAGGGCGGCCGGAATTCGTCGACTGGATCCGGTACCGAGGAGATCTGCC
GCC**CGATCGCC**

ATGTCTACTGTTACGAAATCCTGTGCAAGCTCAGCTTGGAGGGTGATCACTCTACACCCCAAGTGCAT
ATGGGTCTGTCAAAGCCTATACTAACTTTGATGCTGAGCGGGATGCTTTGAACATTGAAACAGCCATCAA
GACCAAAGGTGTGGATGAGGTCACCATTGTCAACATTTTGACCAACCGCAGCAATGCACAGAGACAGGAT
ATTGCCTTCGCCTACCAGAGAAGGACAAAAAGGAACTTGCATCAGCACTGAAGTCAGCCTTATCTGGCC
ACCTGGAGACGGTGATTTTGGCCCTATTGAAGACACCTGCTCAGTATGACGCTTCTGAGCTAAAAGCTTC
CATGAAGGGGCTGGAAACCGACGAGGACTCTCATTGAGATCATCTGCTCCAGAACCAACCAGGAGCTG
CAGGAAATTAACAGAGTCTACAAGGAAATGTACAAGACTGATCTGGAGAAGGACATTATTTCCGGACACAT
CTGGTGACTTCCGCAAGCTGATGGTTGCCCTGGCAAAGGGTAGAAGAGCAGAGGATGGCTCTGTCATTGA
TTATGAACTGATTGACCAAGATGCTCGGGATCTCTATGACGCTGGAGTGAAGAGGAAAGGAACTGATGTT
CCCAAGTGGATCAGCATCATGACCGAGCGGAGCGTGCCCCACCTCCAGAAAGTATTTGATAGGTACAAGA
GTTACAGCCCTTATGACATGTTGGAAAGCATCAGGAAAGAGGTTAAAGGAGACCTGGAAAATGCTTTTCT
GAACCTGGTTCAGTGCATTGAGAAAGCCCTGTATTTTGTGATCGGCTGTATGACTCCATGAAGGGC
AAGGGGACGCGAGATAAGGTCCTGATCAGAATCATGGTCTCCCGCAGTGAAGTGGACATGTTGAAAATTA
GGTCTGAATTCAGAGAAAGTACGGCAAGTCCCTGTAATTATATCCAGCAAGACACTAAGGGCGACTA
CCAGAAAGCGCTGCTGTACCTGTGTGGTGGAGATGAC

ACGCGTACGCGGCCGCTCGAGCAGAACTCATCTCAGAAGAGGATCTGGCAGCAAATGATATCCTGGATT
ACAAGGATGACGACGATAAGGTTTAA



[View online »](#)

Protein Sequence: >RC204988 protein sequence
Red=Cloning site Green=Tags(s)

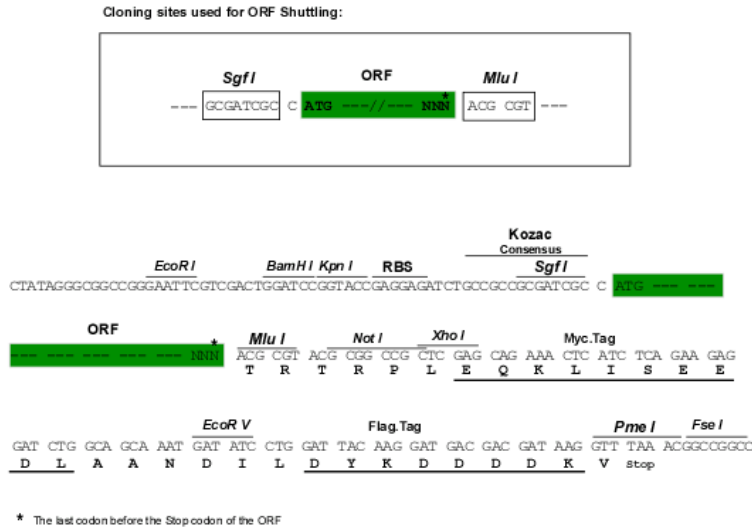
MSTVHEILCKLSLEGDHSTPPSAYGVSVKAYTNFDAERDALNIETAIKTKGVDEVTIVNIL TNRSNAQRQD
 IAFAYQRRTKKELASALKSALSGHLETVILGLLKTPAQYDASELKASMKGLGTDEDSLIEIICSRTNQL
 QEINRVYKEMYKTDLEKDIISDTSGDFRKL MVALAKGRR AEDGSVIDYELIDQDARDLYDAGVKRKGTDV
 PKWISIMTERSVPHLQKVFDRYKSYSPYDML ESIRKEVKGDLENAFLNLVQCIQNKPLYFADRLYDSMKG
 KGTRDKVLIIRIMVSRSEVDMLKIRSEFKRKYGKSLYYYYIQQDTKGDYQKALLYLCGGDD

TRTRPLEQKLISEEDLAANDILDYKDDDDKV

Chromatograms: https://cdn.origene.com/chromatograms/mk6061_a03.zip

Restriction Sites: SgfI-MluI

Cloning Scheme:



ACCN: NM_004039

ORF Size: 1017 bp

OTI Disclaimer: The molecular sequence of this clone aligns with the gene accession number as a point of reference only. However, individual transcript sequences of the same gene can differ through naturally occurring variations (e.g. polymorphisms), each with its own valid existence. This clone is substantially in agreement with the reference, but a complete review of all prevailing variants is recommended prior to use. [More info](#)

OTI Annotation: This clone was engineered to express the complete ORF with an expression tag. Expression varies depending on the nature of the gene.

Components: The ORF clone is ion-exchange column purified and shipped in a 2D barcoded Matrix tube containing 10ug of transfection-ready, dried plasmid DNA (reconstitute with 100 ul of water).

Reconstitution Method:

1. Centrifuge at 5,000xg for 5min.
2. Carefully open the tube and add 100ul of sterile water to dissolve the DNA.
3. Close the tube and incubate for 10 minutes at room temperature.
4. Briefly vortex the tube and then do a quick spin (less than 5000xg) to concentrate the liquid at the bottom.
5. Store the suspended plasmid at -20°C. The DNA is stable for at least one year from date of shipping when stored at -20°C.

RefSeq: [NM_004039.3](#)

RefSeq Size: 1563 bp

RefSeq ORF: 1020 bp

Locus ID: 302

UniProt ID: [P07355](#)

Cytogenetics: 15q22.2

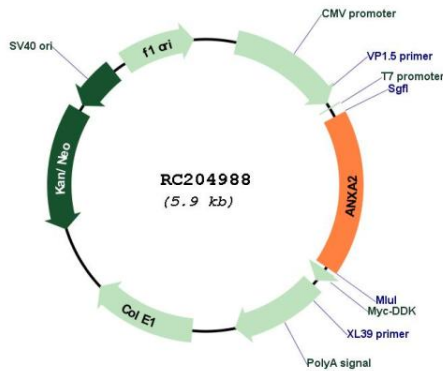
Domains: annexin

Protein Families: Druggable Genome, Secreted Protein, Stem cell - Pluripotency

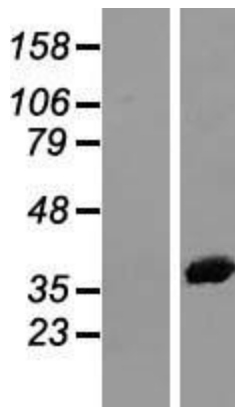
MW: 38.6 kDa

Gene Summary: This gene encodes a member of the annexin family. Members of this calcium-dependent phospholipid-binding protein family play a role in the regulation of cellular growth and in signal transduction pathways. This protein functions as an autocrine factor which heightens osteoclast formation and bone resorption. This gene has three pseudogenes located on chromosomes 4, 9 and 10, respectively. Multiple alternatively spliced transcript variants encoding different isoforms have been found for this gene. Annexin A2 expression has been found to correlate with resistance to treatment against various cancer forms. [provided by RefSeq, Dec 2019]

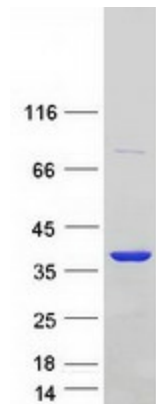
Product images:



Circular map for RC204988



Western blot validation of overexpression lysate (Cat# [LY418296]) using anti-DDK antibody (Cat# [TA50011-100]). Left: Cell lysates from untransfected HEK293T cells; Right: Cell lysates from HEK293T cells transfected with RC204988 using transfection reagent MegaTran 2.0 (Cat# [TT210002]).



Coomassie blue staining of purified ANXA2 protein (Cat# [TP304988]). The protein was produced from HEK293T cells transfected with ANXA2 cDNA clone (Cat# RC204988) using MegaTran 2.0 (Cat# [TT210002]).