

## Product datasheet for **RC204986**

### RNF126 (NM\_194460) Human Tagged ORF Clone

#### Product data:

Product Type:	Expression Plasmids
Product Name:	RNF126 (NM_194460) Human Tagged ORF Clone
Tag:	Myc-DDK
Symbol:	RNF126
Mammalian Cell Selection:	Neomycin
Vector:	pCMV6-Entry (PS100001)
E. coli Selection:	Kanamycin (25 ug/mL)
ORF Nucleotide Sequence:	>RC204986 ORF sequence Red=Cloning site Blue=ORF Green=Tags(s)

TTTTGTAATACGACTCACTATAGGGCGGCCGGAATTCGTCGACTGGATCCGGTACCGAGGAGATCTGCC  
GCC**CGATCGCC**

ATGGCCGAGGCGTCGCCGATCCCGACGGTACTTCTGCCACTGCTGCTCCGTGGAGATCGTCCCGCGCC  
TGCCGGATTATCTGTCCAAGATGCGAGTCTGGTTTTATCGAGGAGCTTCCGGAAGAGACCAGGAGCAC  
AGAAAAATGGTTCTGCCCCCTCCACAGCTCCACAGACCAGAGCCGGCCACCGCTGGAGCACGTGGACCAG  
CACCTGTTACGCTGCCGAGGGCTACGGACAGTTTGCTTTCGGCATCTTCGATGACAGCTTCGAGATCC  
CCACGTTCCCTCCTGGGGCGCAGGCTGACGACGGCAGGGACCCGTAGAGCCGGCGGAGAGACCATCC  
GTCCCGGCACCGGTACGGCGCCCGACAGCCCCGCGCCCGCTCACACGCGGGCGGCCACCGCCCGGCAC  
GAAGGCGTCCCCACGCTGGAAGGGATCATCCAGCAGCTCGTCAACGGCATCATCACGCCCGCCACCATCC  
CCAGCCTGGGCCCTGGGAGTCTGCACTCAAACCTATGGACTACGCCTGGGGGCCAACGGCCTGGA  
TGCCATCATCACAGCTCCTCAATCAGTTTAAAAACACAGGCCCCCCACCGGCAGATAAAGAGAAAATC  
CAGGCCCTCCCCACCGTCCCCGTCCTACTGAGGAGCACGTAGGCTCCGGGCTCGAGTGCCCTGTGTCAAGG  
ACGACTACGCGTGGGTGAGCGTGTGCGGCAGCTGCCCTGCAACCACCTGTTCCACGACGGCTGCATCGT  
GCCCTGGCTGGAGCAGCAGACAGCTGCCCGTCTGCCGAAAAAGCCTCACGGGACAGAACCGGCCACG  
AACCCCTGGCCTCACTGGGGTGAAGTCTCCTCCTCGTCATCGTCTCCTCCAGCTCGCCAGCA  
ACGAGAACGCCACAAGCAACTCG

**ACGCGT**ACGCGGCCGCTCGAGCAGAACTCATCTCAGAAGAGGATCTGGCAGCAAATGATATCCTGGATT  
ACAAGGATGACGACGATAAGGTTTAA



[View online »](#)

**Protein Sequence:** >RC204986 protein sequence  
Red=Cloning site Green=Tags(s)

MAEASPHPGRYFCHCCSVEIVPRLPDYICPRCESGFIEELPEETRSTENGSA  
 PSTAPTDQSRPPLHVDQHLFTLPQGYGQFAFGIFDSDFEIPTFP  
 PPGAQADDGRDPESRRERDHP  
 SRHRYGARQPRARLTTRRATGRH  
 EGVPTLEGIIQQLVNGIITPATIPSLGPWGLH  
 SNPMDYAWGANGLDAIITQLLNQFENTG  
 PPPADKEKI QALPTVPVTEEHVGSLECPVCKDDYALGERV  
 RQLPCNHLFHDGCIVPWLEQHDSCPVCRKSLT  
 GQNTAT NPPGLTGVSFSSSSSSSSSSSP  
 NENATSNS

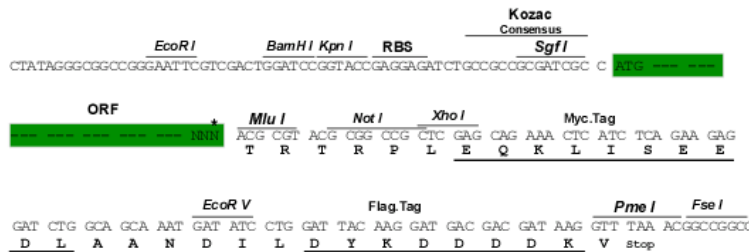
TRTRPLEQKLISEEDLAANDILDYKDDDDKV

**Chromatograms:** [https://cdn.origene.com/chromatograms/mk6549\\_a11.zip](https://cdn.origene.com/chromatograms/mk6549_a11.zip)

**Restriction Sites:** Sgfl-MluI

**Cloning Scheme:**

Cloning sites used for ORF Shuttling:



\* The last codon before the Stop codon of the ORF

**ACCN:** NM\_194460

**ORF Size:** 933 bp

**OTI Disclaimer:** The molecular sequence of this clone aligns with the gene accession number as a point of reference only. However, individual transcript sequences of the same gene can differ through naturally occurring variations (e.g. polymorphisms), each with its own valid existence. This clone is substantially in agreement with the reference, but a complete review of all prevailing variants is recommended prior to use. [More info](#)

**OTI Annotation:** This clone was engineered to express the complete ORF with an expression tag. Expression varies depending on the nature of the gene.

**Components:** The ORF clone is ion-exchange column purified and shipped in a 2D barcoded Matrix tube containing 10ug of transfection-ready, dried plasmid DNA (reconstitute with 100 ul of water).

**Reconstitution Method:**

1. Centrifuge at 5,000xg for 5min.
2. Carefully open the tube and add 100ul of sterile water to dissolve the DNA.
3. Close the tube and incubate for 10 minutes at room temperature.
4. Briefly vortex the tube and then do a quick spin (less than 5000xg) to concentrate the liquid at the bottom.
5. Store the suspended plasmid at -20°C. The DNA is stable for at least one year from date of shipping when stored at -20°C.

**Note:** Plasmids are not sterile. For experiments where strict sterility is required, filtration with 0.22um filter is required.

**RefSeq:** [NM\\_194460.3](#)

**RefSeq Size:** 1665 bp

**RefSeq ORF:** 936 bp

**Locus ID:** 55658

**UniProt ID:** [Q9BV68](#)

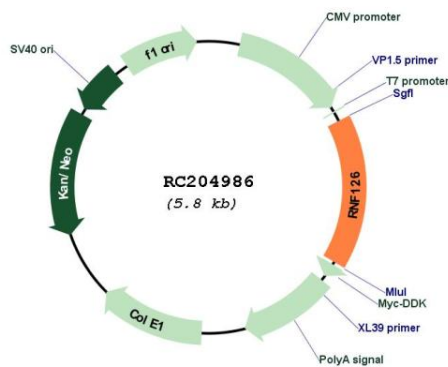
**Cytogenetics:** 19p13.3

**Protein Families:** Druggable Genome

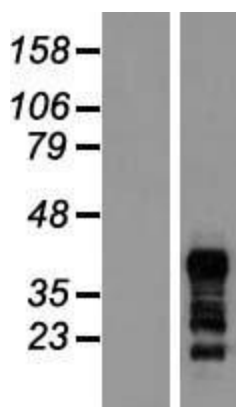
**MW:** 33.9 kDa

**Gene Summary:** The protein encoded by this gene contains a RING finger domain, a motif present in a variety of functionally distinct proteins and known to be involved in protein-protein and protein-DNA interactions. [provided by RefSeq, Jul 2008]

## Product images:



Circular map for RC204986



Western blot validation of overexpression lysate (Cat# [LY405144]) using anti-DDK antibody (Cat# [TA50011-100]). Left: Cell lysates from untransfected HEK293T cells; Right: Cell lysates from HEK293T cells transfected with RC204986 using transfection reagent MegaTran 2.0 (Cat# [TT210002]).