

## Product datasheet for **RC204978**

### Pregnancy Specific Glycoprotein 1 (PSG1) (NM\_006905) Human Tagged ORF Clone

#### Product data:

Product Type:	Expression Plasmids
Product Name:	Pregnancy Specific Glycoprotein 1 (PSG1) (NM_006905) Human Tagged ORF Clone
Tag:	Myc-DDK
Symbol:	Pregnancy Specific Glycoprotein 1
Synonyms:	B1G1; CD66f; DHFRP2; FL-NCA-1/2; PBG1; PS-beta-C/D; PS-beta-G-1; PSBG-1; PSBG1; PSG95; PSGGA; PSGIIA; SP1
Mammalian Cell Selection:	Neomycin
Vector:	pCMV6-Entry (PS100001)
E. coli Selection:	Kanamycin (25 ug/mL)



[View online »](#)

**ORF Nucleotide Sequence:**

>RC204978 ORF sequence  
 Red=Cloning site Blue=ORF Green=Tags(s)

TTTTGTAATACGACTCACTATAGGGCGGCCGGAATTCGTCGACTGGATCCGGTACCGAGGAGATCTGCC  
 GCC**CGGATCGCC**

ATGGGAACCCCTCTCAGCCCTCCCTGCACACAGCGCATCAAATGGAAGGGGCTCCTGCTCACAGCATCAC  
 TTTTAAACTTCTGGAACCTGCCACCCTGCCCCAAGTCACGATTGAAGCCGAGCCAACCAAAGTTCCGA  
 GGGGAAGGATGTTCTTCTACTTGTCCACAATTTGCCCCAGAATCTTACCGGTACATCTGGTACAAAGGG  
 CAAATGAGGGACCTCTACCATTACATTACATCATATGTAGTAGACGGTAAATAATTATATATGGCCTG  
 CATATAGTGGACGAGAAACAGCATATTTCAATGCATCCCTGCTGATCCAGAATGTCACCCGGGAGGACGC  
 AGGATCTACACCTTACACATCATAAAGGGAGATGATGGGACTAGAGGAGTAACTGGACGTTTCACCTTC  
 ACCTTACACCTGGAGACTCCTAAGCCCTCCATCTCCAGCAGCAACTTAAATCCCAGGGAGACCATGGAGG  
 CTGTGAGCTTAACCTGTGACCTGAGACTCCAGACGCAAGCTACCTGTGGTGGATGAATGGTCAGAGCCT  
 CCCTATGACTCACAGCTTGAAGCTGTCCGAAACCAACAGGACCCTCTTTCTATTGGGTGCACAAAGTAT  
 ACTGCAGGACCCTATGAATGTGAAATACGGAACCCAGTGAGTGCCAGCCGAGTACCCAGTACCCCTGA  
 ATCTCCTCCCGAAGCTGCCCAAGCCCTACATCACCATCAACAACCTAAACCCAGGGAGAATAAGGATGT  
 CTTAAACTTACCTGTGAACCTAAGAGTGAGAACTACACCTACATTTGGTGGCTAAATGGTCAGAGCCTC  
 CCGGTCAGTCCCAGGGTAAAGCGACCCATTGAAAACAGGATCCTCATTCTACCCAGTGTACAGAGAAATG  
 AAACAGGACCCTATCAATGTGAAATACGGGACCCGATATGGTGGCATCCGAGTGACCCAGTACCCCTGAA  
 TGTCTCTATGGTCCAGACCTCCCAGAATTTACCCTTATTACCTATTACCGTTCAGGAGAAGTCCCTC  
 TACTTGTCTGTCTGCGGACTTAACCCACCGGCACAGTATTCTTGGACAATTAATGAAAAGTTTCAGC  
 TACCAGGACAAAAGCTCTTTATCCGCCATATTACTACAAAGCATAGCGGGCTCTATGTTTGTCTGTTCG  
 TAACTCAGCCACTGGCAAGGAAAGCTCCAATCCATGACAGTCGAAGTCTCTGGTAAAGTGGATCCCAGCA  
 TCGTTGGCAATAGGGTTT

**ACGCGT**ACGCGGCCGCTCGAGCAGAAACTCATCTCAGAAGAGGATCTGGCAGCAAATGATATCCTGGATT  
 ACAAGGATGACGACGATAAGGTTTAA

**Protein Sequence:**

>RC204978 protein sequence  
 Red=Cloning site Green=Tags(s)

MGTLSAPPCTQRIKWKGLLLTASLLNFWNLPTTAQVTIEAEPKTVSEKDVLLL VHNLPQNLGTIYIWKY  
 QMRDLYHYITSYVVDGEIIIYGPAYSGRETAYSNASLLIQNVTRDAGSYTLHIKGGDGTGRVTRFTF  
 TLHLETPKPSISSNLNPRETMEAVSLTCDPETPDASYLWWMNGQSLPMTSLKLSLSETNRTFLFLGVTKY  
 TAGPYECEIRNPVSASRSDPVTNLNLLPKLPKPYITINNLNPRENKDVLNFTCEPKSENYTIWWLNGQSL  
 PVSPRVKRPNIENRILILPSVTRNETGPYQCEIRDYGGIRSDPVTNLNVL YGPDLPRIYPSFTYYRSGEVL  
 YLSCSADSNPQAQSWTINEKFQLPGQKLFIRHITTKHSGLYVCSVRNSATGKESKSMTEVSGKWIPA  
 SLAIGF

**TRTRPLEQKLI**SEEDLAANDILDYKDDDDKV

**Chromatograms:**

[https://cdn.origene.com/chromatograms/mk6178\\_c04.zip](https://cdn.origene.com/chromatograms/mk6178_c04.zip)

**Restriction Sites:**

Sgfl-Mlul

Cloning Scheme:



ACCN: NM\_006905

ORF Size: 1278 bp

OTI Disclaimer: The molecular sequence of this clone aligns with the gene accession number as a point of reference only. However, individual transcript sequences of the same gene can differ through naturally occurring variations (e.g. polymorphisms), each with its own valid existence. This clone is substantially in agreement with the reference, but a complete review of all prevailing variants is recommended prior to use. [More info](#)

OTI Annotation: This clone was engineered to express the complete ORF with an expression tag. Expression varies depending on the nature of the gene.

Components: The ORF clone is ion-exchange column purified and shipped in a 2D barcoded Matrix tube containing 10ug of transfection-ready, dried plasmid DNA (reconstitute with 100 ul of water).

Reconstitution Method:

1. Centrifuge at 5,000xg for 5min.
2. Carefully open the tube and add 100ul of sterile water to dissolve the DNA.
3. Close the tube and incubate for 10 minutes at room temperature.
4. Briefly vortex the tube and then do a quick spin (less than 5000xg) to concentrate the liquid at the bottom.
5. Store the suspended plasmid at -20°C. The DNA is stable for at least one year from date of shipping when stored at -20°C.

Note: Plasmids are not sterile. For experiments where strict sterility is required, filtration with 0.22um filter is required.

RefSeq: [NM\\_006905.3](#)

RefSeq Size: 2306 bp

RefSeq ORF: 1281 bp

Locus ID: 5669

UniProt ID: [P11464](#)

Cytogenetics: 19q13.2

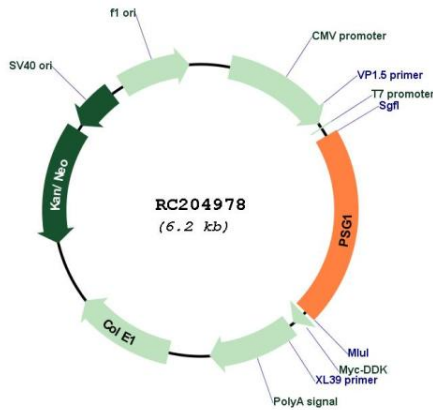
Domains: ig, IGc2, IG

Protein Families: Secreted Protein

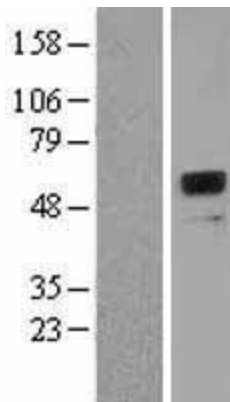
MW: 47.9 kDa

**Gene Summary:** The human placenta is a multihormonal endocrine organ that produces hormones, enzymes, and other molecules that support fetal survival and development. Pregnancy-specific beta-1-glycoprotein (PSBG, PSG) is a major product of the syncytiotrophoblast, reaching concentrations of 100 to 290 mg/l at term in the serum of pregnant women (Horne et al., 1976 [PubMed 971765]). PSG is a member of the immunoglobulin (Ig) superfamily (Watanabe and Chou, 1988 [PubMed 3257488]; Streydio et al., 1988 [PubMed 3260773]).[supplied by OMIM, Oct 2009]

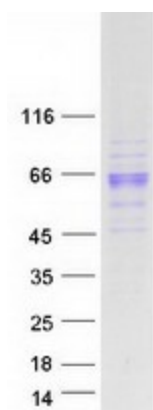
**Product images:**



Circular map for RC204978



Western blot validation of overexpression lysate (Cat# [LY402056]) using anti-DDK antibody (Cat# [TA50011-100]). Left: Cell lysates from untransfected HEK293T cells; Right: Cell lysates from HEK293T cells transfected with RC204978 using transfection reagent MegaTran 2.0 (Cat# [TT210002]).



Coomassie blue staining of purified PSG1 protein (Cat# [TP304978]). The protein was produced from HEK293T cells transfected with PSG1 cDNA clone (Cat# RC204978) using MegaTran 2.0 (Cat# [TT210002]).