

## Product datasheet for **RC204975**

### **RABGGTB (NM\_004582) Human Tagged ORF Clone**

#### Product data:

**Product Type:** Expression Plasmids  
**Product Name:** RABGGTB (NM\_004582) Human Tagged ORF Clone  
**Tag:** Myc-DDK  
**Symbol:** RABGGTB  
**Synonyms:** GGTB  
**Mammalian Cell Selection:** Neomycin  
**Vector:** pCMV6-Entry (PS100001)  
**E. coli Selection:** Kanamycin (25 ug/mL)  
**ORF Nucleotide Sequence:** >RC204975 ORF sequence  
**Red=Cloning site Blue=ORF Green=Tags(s)**

TTTTGTAATACGACTCACTATAGGGCGGCCGGAATTCGTCGACTGGATCCGGTACCGAGGAGATCTGCC  
GCC**CGCATCGCC**

ATGGGCACTCCACAGAAGGATGTTATTATCAAGTCAGATGCACCGGACACTTTGTTATTGGAGAAACATG  
CAGATTATATCGCATCTATGGCTCAAAGAAAGATGATTATGAATACTGTATGTCTGAGTATTTGAGAAT  
GAGTGGCATCTATTGGGGTCTGACAGTAATGGATCTCATGGGACAACCTCATCGCATGAATAGAGAAGAG  
ATTCTGGCATTATTAAGTCTTGCCAACATGAATGTGGTGAATAAGTGCTAGTATCGGACATGATCCTC  
ATCTTTTATACACTCTTAGTGCTGTCCAGATTCTACGCTGTATGACAGTATTAATGTTATTGACGTA  
TAAAGTTGTGGAATATGTTAAAGGTCTACAGAAAGAAGATGGTTCTTTTGTCTGGAGATATTTGGGGAGAA  
ATTGACACAAGATTCTCTTTTGTGCGGTGCAACTTTGGCTTTGTTGGGGAAGCTTGATGCTATTAATG  
TGGAAAAGGCAATCGAATTTGTTTTATCCTGTATGAACCTTGACGGTGGATTTGGTTGCAGACCAGGTTT  
TGAATCCCATGCTGGGCAGATCTATTGTTGCACAGGATTTCTGGCTATTACAAGTCAGTTGCATCAAGTA  
AATTCTGATTTACTTGGCTGGTGGCTTTGTGAACGACAATTACCCTCAGGCGGGCTCAATGGAAGCCGG  
AGAAGTTACCAGATGTATGCTACTCATGGTGGTCTTGGCTTCCCTAAAGATAATTGGAAGACTTCATTG  
GATTGATAGAGAGAACTGCCTAATTTTCATTTAGCATGTCAAGATGAAGAAACGGGGGATTTGCAGAC  
AGGCCAGGAGATATGGTGGATCCTTTTCATACCTTATTTGGAATTGCTGGATTGTCACTTTTGGGAAG  
AACAGATTAACCTGTTAATCCTGTCTTTTGCATGCCTGAAGAAGTGCTTCAGAGAGTGAATGTTACGCC  
TGAGCTAGTGAGC

**ACGCGT**ACGCGGCCGCTCGAGCAGAACTCATCTCAGAAGAGGATCTGGCAGCAATGATATCCTGGATT  
ACAAGGATGACGACGATAAGGTTTAA



[View online »](#)

**Protein Sequence:** >RC204975 protein sequence  
Red=Cloning site Green=Tags(s)

MGTPQKDVIKSDAPDTLLLEKHADYIASYGSKKDDYEYCMSEYLRMSGIYWGLTVMDLMGQLHRMNREE  
 ILAFIKSCQHECGGISASIGHDPHLLYTL SAVQIL TL YDSINVIDVNVVEYVYKGLQKEDGSFAGDIWGE  
 IDTRFSFCAVATLALLGKLDAINVEKAIEFVLSCMNFDDGGFCRPGSESHAGQIYCTGTFLAITSQLHQV  
 NSDLLGWLWCERQLPSGGLNGRPEKLPDVCYSWWVLASLKIIGRLHWIDREKLRNFILACQDEETGGFAD  
 RPDGMVDPFHLLFGIAGLSLLGEEQIKPVPVFCMPEEVLQRVNVQPELV

TRTRPLEQKLISEEDLAANDILDYKDDDDKV

**Chromatograms:** [https://cdn.origene.com/chromatograms/mk6067\\_h10.zip](https://cdn.origene.com/chromatograms/mk6067_h10.zip)

**Restriction Sites:** SgfI-MluI

**Cloning Scheme:**



**ACCN:** NM\_004582

**ORF Size:** 993 bp

**OTI Disclaimer:** The molecular sequence of this clone aligns with the gene accession number as a point of reference only. However, individual transcript sequences of the same gene can differ through naturally occurring variations (e.g. polymorphisms), each with its own valid existence. This clone is substantially in agreement with the reference, but a complete review of all prevailing variants is recommended prior to use. [More info](#)

**OTI Annotation:** This clone was engineered to express the complete ORF with an expression tag. Expression varies depending on the nature of the gene.

**Components:** The ORF clone is ion-exchange column purified and shipped in a 2D barcoded Matrix tube containing 10ug of transfection-ready, dried plasmid DNA (reconstitute with 100 ul of water).

**Reconstitution Method:**

1. Centrifuge at 5,000xg for 5min.
2. Carefully open the tube and add 100ul of sterile water to dissolve the DNA.
3. Close the tube and incubate for 10 minutes at room temperature.
4. Briefly vortex the tube and then do a quick spin (less than 5000xg) to concentrate the liquid at the bottom.
5. Store the suspended plasmid at -20°C. The DNA is stable for at least one year from date of shipping when stored at -20°C.

**Note:** Plasmids are not sterile. For experiments where strict sterility is required, filtration with 0.22um filter is required.

**RefSeq:** [NM\\_004582.2](#), [NP\\_004573.2](#)

**RefSeq Size:** 1531 bp

**RefSeq ORF:** 996 bp

**Locus ID:** 5876

**UniProt ID:** [P53611](#)

**Cytogenetics:** 1p31.1

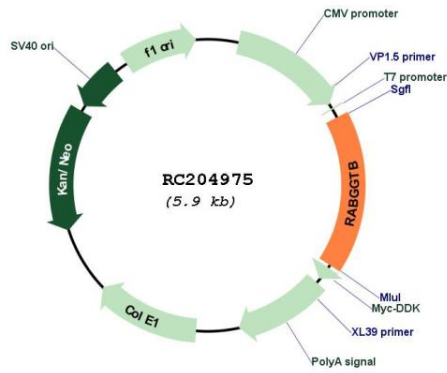
**Domains:** prenyltrans

**Protein Families:** Druggable Genome

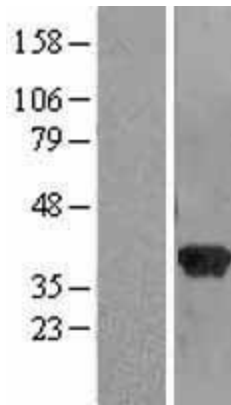
**MW:** 36.9 kDa

**Gene Summary:** This gene encodes the beta-subunit of the enzyme Rab geranylgeranyl-transferase (RabGGTase), which belongs to the protein prenyltransferase family. RabGGTase catalyzes the post-translational addition of geranylgeranyl groups to C-terminal cysteine residues of Rab GTPases. Three small nucleolar RNA genes are present in the intronic regions of this gene. Alternately spliced transcript variants have been observed for this gene. A pseudogene associated with this gene is located on chromosome 3. [provided by RefSeq, Jan 2013]

Product images:



Circular map for RC204975



Western blot validation of overexpression lysate (Cat# [LY417892]) using anti-DDK antibody (Cat# [TA50011-100]). Left: Cell lysates from untransfected HEK293T cells; Right: Cell lysates from HEK293T cells transfected with RC204975 using transfection reagent MegaTran 2.0 (Cat# [TT210002]).