

Product datasheet for **RC204974**

CDC42EP2 (NM_006779) Human Tagged ORF Clone

Product data:

Product Type: Expression Plasmids
Product Name: CDC42EP2 (NM_006779) Human Tagged ORF Clone
Tag: Myc-DDK
Symbol: CDC42EP2
Synonyms: BORG1; CEP2
Vector: pCMV6-Entry (PS100001)
E. coli Selection: Kanamycin (25 ug/mL)
Cell Selection: Neomycin
ORF Nucleotide Sequence: >RC204974 ORF sequence
Red=Cloning site Blue=ORF Green=Tags(s)

TTTTGTAATACGACTCACTATAGGGCGCCGGAATTCGTCGACTGGATCCGGTACCGAGGAGATCTGCC
GCC**CGATCGCC**

ATGTCCACCAAGGTGCCATCTATCTGAAGCGTGGCAGTCGAAGGGCAAGAAGGAGAAGCTTCGGGACC
TGCTGTCTCGGACATGATCAGCCACCGCTGGGGGACTTCCGCCACACCATTTCATATTGGCAGTGGCGG
CGGCAGTGACATGTTTGGCGACATCTCCTTCTGCAGGGCAAGTCCACCTCCTGCCGGGGACCATGGTG
GAGGGGCTGAAGAAGATGGCACCTTCGACCTCCCTTCCAGTTCACCCGACCGCCACCGTGTGTGGGC
GGGAGCTCCCGGACGGCCATCCCTCTGCTCAAGAACGCCATCTCCCTCCCGGTTATCGGTGGACCCCA
GGCTCTCACCTGCCACAGCCAGGCTCCACCAAGCCCTCGCTGCACCTGGAGACCCCTCAGCCT
TCCCCACAGGAGGGGAGGTGTGGACATCTGGAGGATTCCAGAGACTGGCTCCCCAACAGTGGACTGA
CCCCGGAGTCAGGGGCCGAGGAGCCCTTCTGTCCAATGCCAGCTCCCTGCTGTCCCTGCACGTGGACCT
GGGGCTTCCATCTGGATGATGTCTGCAGATCATGGATCAGGACCTGGACAGCATGCAGATCCCCACA

ACGCGTACGCGGCCGCTCGAGCAGAACTCATCTCAGAAGAGGATCTGGCAGCAAATGATATCCTGGATT
ACAAGGATGACGACGATAAGGTTTAA

Protein Sequence: >RC204974 protein sequence
Red=Cloning site Green=Tags(s)

MSTKVPVIYLRGSRKGGKKEKLRDLLSSDMI SPPLGDFRHTIHIIGSGGSDMFGDISFLQKGFHLLPGTMV
EGPEEDGTFDLPFQFTRTATVCGREL PDGPSLLKNAISLPVIGGPQAL TLPTAQAPPKPPRLHLETPQP
SPQEGGSVDIWRIPETGSPNSGLTPESGAEFPFLSNASSLLSLHVDLGPSILDDVLQIMDQDLDSMQIPT

TRTRPLEQKLISEEDLAANDILDYKDDDDKV

Chromatograms: https://cdn.origene.com/chromatograms/mk6439_d09.zip



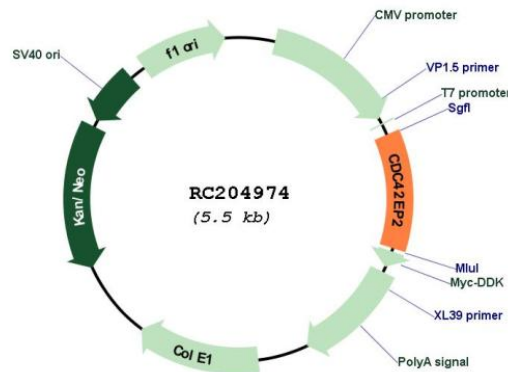
[View online »](#)

Restriction Sites: SgfI-MluI

Cloning Scheme:



Plasmid Map:



ACCN: NM_006779

ORF Size: 630 bp

OTI Disclaimer: The molecular sequence of this clone aligns with the gene accession number as a point of reference only. However, individual transcript sequences of the same gene can differ through naturally occurring variations (e.g. polymorphisms), each with its own valid existence. This clone is substantially in agreement with the reference, but a complete review of all prevailing variants is recommended prior to use. [More info](#)

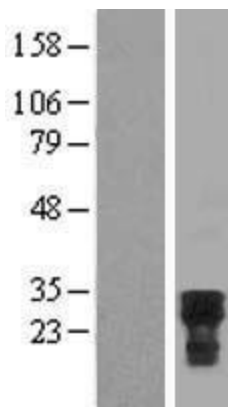
OTI Annotation: This clone was engineered to express the complete ORF with an expression tag. Expression varies depending on the nature of the gene.

RefSeq: [NM_006779.4](#)

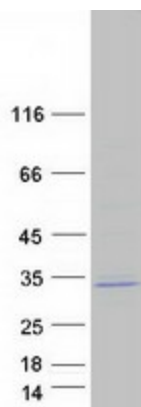
RefSeq Size: 2043 bp
RefSeq ORF: 633 bp
Locus ID: 10435
UniProt ID: [O14613](#)
Domains: PBD
MW: 22.5 kDa

Gene Summary: CDC42, a small Rho GTPase, regulates the formation of F-actin-containing structures through its interaction with the downstream effector proteins. The protein encoded by this gene is a member of the Borg family of CDC42 effector proteins. Borg family proteins contain a CRIB (Cdc42/Rac interactive-binding) domain. They bind to, and negatively regulate the function of CDC42. Coexpression of this protein with CDC42 suggested a role of this protein in actin filament assembly and cell shape control. [provided by RefSeq, Aug 2011]

Product images:



Western blot validation of overexpression lysate (Cat# [LY416424]) using anti-DDK antibody (Cat# [TA50011-100]). Left: Cell lysates from untransfected HEK293T cells; Right: Cell lysates from HEK293T cells transfected with RC204974 using transfection reagent MegaTran 2.0 (Cat# [TT210002]).



Coomassie blue staining of purified CDC42EP2 protein (Cat# [TP304974]). The protein was produced from HEK293T cells transfected with CDC42EP2 cDNA clone (Cat# RC204974) using MegaTran 2.0 (Cat# [TT210002]).