

Product datasheet for RC204971

SEC11A (NM_014300) Human Tagged ORF Clone

Product data:

Product Type: Expression Plasmids
Product Name: SEC11A (NM_014300) Human Tagged ORF Clone
Tag: Myc-DDK
Symbol: SEC11A
Synonyms: 1810012E07Rik; SEC11L1; sid2895; SPC18; SPCS4A
Mammalian Cell Selection: Neomycin
Vector: pCMV6-Entry (PS100001)
E. coli Selection: Kanamycin (25 ug/mL)
ORF Nucleotide Sequence: >RC204971 ORF sequence
 Red=Cloning site Blue=ORF Green=Tags(s)

TTTTGTAATACGACTCACTATAGGGCGCCGGGAATTCGTCGACTGGATCCGGTACCGAGGAGATCTGCC
 GCC**CGATCGCC**

ATGCTGTCTCTAGACTTTTTGGACGATGTGCGCGGATGAACAAGCGGCAGCTCTATTATCAAGTCTTAA
 ATTTTGAATGATTGTCTCATCGGCACTAATGATCTGGAAGGGTTAATGGTAATAACTGGAAGTAAAAG
 TCCGATTGTAGTGGTCTCAGTGGCAGCATGGAACCTGCATTTTCATAGAGGAGATCTTCTTTTCTAACA
 AATCGAGTTGAAGATCCCATACGAGTGGGAGAAATTTGTTGTTTTAGGATAGAAGGAAGAGAGATTCCTA
 TAGTTCACCGAGTCTTGAAGATTCATGAAAAGCAAATGGGCATATCAAGTTTTTGACCAAAGGAGATAA
 TAATGCGTTGATGACCGAGGCCTCTATAAACAAGGACAACATTGGCTAGAGAAAAAAGATGTTGTGGGG
 AGAGCCAGGGGATTTGTTCTTATATTGGAATTGTGACGATCCTCATGAATGACTATCCTAAATTTAAGT
 ATGCAATTCTTTTTGCTGGGTTATTCTGTGCTGGTTTCATCGTGAG

ACGCGTACGCGGCCGCTCGAGCAGAACTCATCTCAGAAGAGGATCTGGCAGCAAATGATATCCTGGATT
 ACAAGGATGACGACGATAAGGTTTAA

Protein Sequence: >RC204971 protein sequence
 Red=Cloning site Green=Tags(s)

MLSLDFLDDVRRMNRQLYYQVLNFGMI VSSALMIWKGLM VITGSESPIVVVLSGSMEPAFHRGDLFL
 NRVEDPIRVGEIVVFRIEGREIPIVHRVLIHEKQNGHIKFLTKGDNNVDDRGLYKQGQHWLEKKDQVVG
 RARGFVPYIGIVTILMNDYPKFKYAVLFLGLFVLVHRE

TRTRPLEQKLISEEDLAANDILDYKDDDDKV

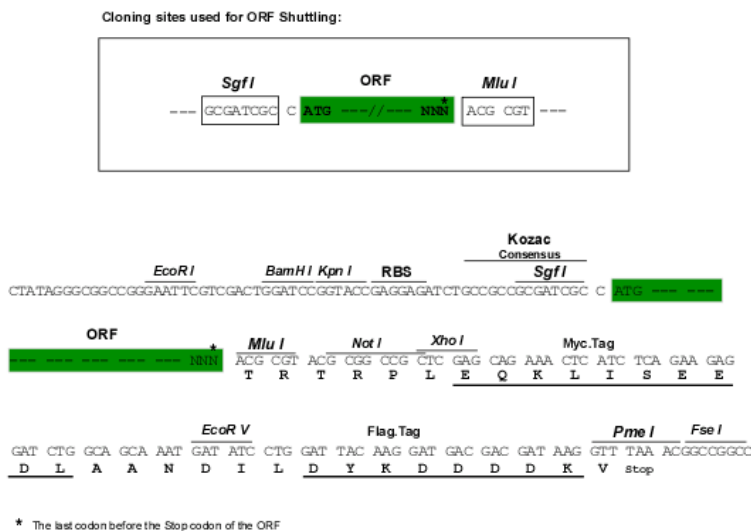
Chromatograms: https://cdn.origene.com/chromatograms/mk6062_a04.zip



[View online »](#)

Restriction Sites: SgfI-MluI

Cloning Scheme:



ACCN: NM_014300

ORF Size: 537 bp

OTI Disclaimer: The molecular sequence of this clone aligns with the gene accession number as a point of reference only. However, individual transcript sequences of the same gene can differ through naturally occurring variations (e.g. polymorphisms), each with its own valid existence. This clone is substantially in agreement with the reference, but a complete review of all prevailing variants is recommended prior to use. [More info](#)

OTI Annotation: This clone was engineered to express the complete ORF with an expression tag. Expression varies depending on the nature of the gene.

Components: The ORF clone is ion-exchange column purified and shipped in a 2D barcoded Matrix tube containing 10ug of transfection-ready, dried plasmid DNA (reconstitute with 100 ul of water).

Reconstitution Method:

1. Centrifuge at 5,000xg for 5min.
2. Carefully open the tube and add 100ul of sterile water to dissolve the DNA.
3. Close the tube and incubate for 10 minutes at room temperature.
4. Briefly vortex the tube and then do a quick spin (less than 5000xg) to concentrate the liquid at the bottom.
5. Store the suspended plasmid at -20°C. The DNA is stable for at least one year from date of shipping when stored at -20°C.

RefSeq: [NM_014300.4](#)

RefSeq Size: 1424 bp

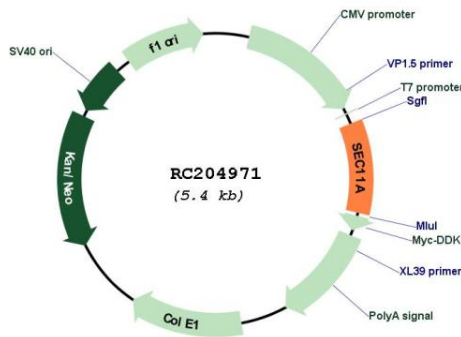
RefSeq ORF: 540 bp

Locus ID: 23478

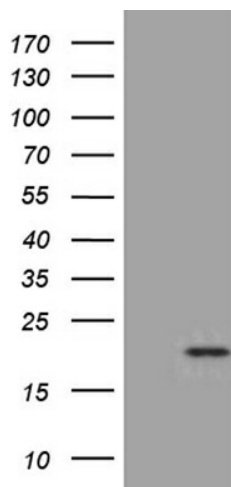
UniProt ID: [P67812](#)

Cytogenetics:	15q25.2-q25.3
Domains:	Peptidase_S26
Protein Families:	Druggable Genome, Protease, Transmembrane
Protein Pathways:	Protein export
MW:	20.6 kDa
Gene Summary:	This gene encodes a member of the peptidase S26B family. The encoded protein is an 18kDa subunit of the signal peptidase complex and has been linked to cell migration and invasion, gastric cancer and lymph node metastasis. Alternative splicing results in multiple transcript variants. A related pseudogene has been identified on chromosome 8. [provided by RefSeq, Dec 2012]

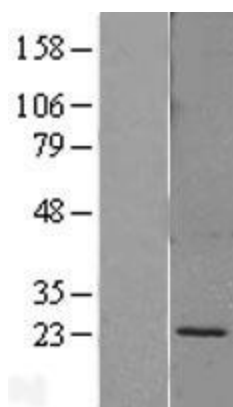
Product images:



Circular map for RC204971



HEK293T cells were transfected with the pCMV6-ENTRY control (Cat# [PS100001], Left lane) or pCMV6-ENTRY SEC11A (Cat# RC204971, Right lane) cDNA for 48 hrs and lysed. Equivalent amounts of cell lysates (5 ug per lane) were separated by SDS-PAGE and immunoblotted with anti-SEC11A (Cat# [TA811462])(1:2000). Positive lysates [LY402308] (100ug) and [LC402308] (20ug) can be purchased separately from OriGene.



Western blot validation of overexpression lysate (Cat# [LY402308]) using anti-DDK antibody (Cat# [TA50011-100]). Left: Cell lysates from untransfected HEK293T cells; Right: Cell lysates from HEK293T cells transfected with RC204971 using transfection reagent MegaTran 2.0 (Cat# [TT210002]).