

Product datasheet for **RC204968**

CREB3L1 (NM_052854) Human Tagged ORF Clone

Product data:

Product Type:	Expression Plasmids
Product Name:	CREB3L1 (NM_052854) Human Tagged ORF Clone
Tag:	Myc-DDK
Symbol:	CREB3L1
Synonyms:	OASIS; OI16
Mammalian Cell Selection:	Neomycin
Vector:	pCMV6-Entry (PS100001)
E. coli Selection:	Kanamycin (25 ug/mL)



[View online »](#)

ORF Nucleotide Sequence:

>RC204968 ORF sequence
 Red=Cloning site Blue=ORF Green=Tags(s)

TTTTGTAATACGACTCACTATAGGGCGGCCGGAATTCGTCGACTGGATCCGGTACCGAGGAGATCTGCC
 GCC**CGGATCGCC**

ATGGACGCGCTCTTGAACCCCTCCCGGCCGACAGGCTGTTCCCGGATCCAGCTTCTGGACTTGGGG
 ATCTGAACGAGTCGGACTTCTCAACAATGCGCACTTCTGAGCACCTGGACCCTTACGGAGAACAT
 GGAGGACTTCTCAATGACCTGTTGACGAGCTTCTTGTGACCTGTGCTGGATGAGAAGGCCCTCTA
 TTGGACATGGAAGTGGACTCCCTACGCCAGGCATCCAGGCGGAGCACAGCTACTCCCTGAGCGGCGACT
 CAGCGCCCCAGAGCCCCCTGTGCCATCAAGATGGAGGACACCACCAAGATGCAGAGCATGGAGCATG
 GGCCTGGGACACAACTGTGCTCCATCATGGTGAAGCAGGAGCAGAGCCCGGAGCTGCCCTGGACCT
 CTGGCTGCCCCCTCGCCATGGCTGCCGCGCCCATGGCCACCACCCCGCTGCTGGCCCTCAGCCCT
 TGTCCAGGCTGCCATCCCCACCAGGCCCGGGAGAGATGACTCAGCTGCCAGTGATCAAAGCAGAGCC
 TCTGGAGTGAACCACTTCTCAAAGTACACCGGAGGACTGGTGCAGATGCCCTCGACGCCCCCAGC
 AGCCATGGCAGTGACAGCGACGGCTCCCAGAGTCCCGCTCTCTGCCCCCTCCAGCCCTGTCAAGCCCA
 TGGCGCGCTCTCCACGGCCATCTCCACCTCCCACTCCTCACTGCCCTCACAATTACAGGGGACATC
 AGGGCCACTGCTCCTGACAGAGGAGGAGAAGCGGACCCTGATTGCTGAGGGCTACCCCATCCCCACAAA
 CTCCCCCTCACAAAGCCGAGGAGAAGGCCCTTGAAGAGAGTCCGGAGGAAAATCAAGAACAAGATCTCAG
 CCCAGGAGAGCCGTCGTAAGAAGAAGGAGTATGTGGAGTGTCTAGAAAAGAAGGTGGAGACATTTACATC
 TGAGAACAATGAAGTGTGAAGAAGGTGGAGACCTGGAGAATGCCAACAGGACCCTGCTCCAGCAGCTG
 CAGAAACTCCAGACTCTGGTACCAACAAGATCTCCAGACCTACAAGATGGCCGCCACCCAGACTGGGA
 CCGCTCATGGTGGCAGCCTTGTGCTTGTCTGGTGTGGCTCCCTCGTCCCTGCCCTCCCGAGTT
 CTCTCCGGCTCCAGACTGTGAAGGAAGACCCCTGGCCGACAGCGGCTCTACACGGCCAGCCAGATG
 CCCTCCGAAGCCTCTATTCTACGATGACGGGCGAGGCTTATGGGAAGATGGCCGACGACCCTGCTGC
 CCATGGAGCCCCAGATGGCTGGGAAATCAACCCCGGGGGCCGGCAGAGCAGCGCCCCGGGACCCT
 GCAGCATGATCACCTGGACAGCACCCACGAGACCACCAAGTACCTGAGTGAAGCCTGGCCTAAAGACGGT
 GGAAACGGCACCAGCCCCGACTTCTCCACTCCAAGGAGTGGTCCACGACAGGGATCTGGGCCCAACA
 CCACCATCAAATCTCC

ACGCGTACGCGGCCGCTCGAGCAGAACTCATCTCAGAAGAGGATCTGGCAGCAAATGATATCTGGATT
 ACAAGGATGACGACGATAAGGTTTAA

Protein Sequence:

>RC204968 protein sequence
 Red=Cloning site Green=Tags(s)

MDAVLEPFPADRLFPGSSFLDLGDLNESDFLNNAHFPEHLDFHTENMEDFSNDLFSFFDDPVLDEKSPL
 LDME LDSPTPGIQAEHSYSLSGDSAPQSPLVPIKMEDTTQDAEHGAWALGHKLC SIMVKQE QSP ELPVDP
 LAAPSAMAAAAAMATPLLGLSPLSRLPIPHQAPGEMTQLPVIIKAEPLVNQFLKVTPEDLVQMPPTPPS
 SHGSDSDGSQSPRSLPPSSPVRPMARSSTAISTSPLLTAPHKLQGTSGPLLLTEEEKRTLIAEGYIPTK
 LPLTKAEKALKRVRRIKNIKISAQESRRKKKEYVECLEKKVETFTSENNELWKKVETLENANRLLQQL
 QKLQTLVTNKISRYPYKMAATQTGTCLMVAALCFVLVLGSLVPCLPEFSSGSQTVKEDPLAADGVYTASQM
 PSRLLFYDDGAGLWEDGRSTLLPMEPPDWEINPGGPAEQRRDHLQHDHLDSTHETTKYLSEAWPKDG
 NGTSPDFSHSKEWFHDRDLGPNTTIKLS

TRTRPLEQKLISEEDLAANDILDYKDDDDKV

Chromatograms:

https://cdn.origene.com/chromatograms/mk6062_f03.zip

Restriction Sites:

Sgfl-MluI

Cloning Scheme:


ACCN: NM_052854

ORF Size: 1557 bp

OTI Disclaimer: The molecular sequence of this clone aligns with the gene accession number as a point of reference only. However, individual transcript sequences of the same gene can differ through naturally occurring variations (e.g. polymorphisms), each with its own valid existence. This clone is substantially in agreement with the reference, but a complete review of all prevailing variants is recommended prior to use. [More info](#)

OTI Annotation: This clone was engineered to express the complete ORF with an expression tag. Expression varies depending on the nature of the gene.

Components: The ORF clone is ion-exchange column purified and shipped in a 2D barcoded Matrix tube containing 10ug of transfection-ready, dried plasmid DNA (reconstitute with 100 ul of water).

Reconstitution Method:

1. Centrifuge at 5,000xg for 5min.
2. Carefully open the tube and add 100ul of sterile water to dissolve the DNA.
3. Close the tube and incubate for 10 minutes at room temperature.
4. Briefly vortex the tube and then do a quick spin (less than 5000xg) to concentrate the liquid at the bottom.
5. Store the suspended plasmid at -20°C. The DNA is stable for at least one year from date of shipping when stored at -20°C.

Note: Plasmids are not sterile. For experiments where strict sterility is required, filtration with 0.22um filter is required.

RefSeq: [NM_052854.4](#)

RefSeq Size: 2741 bp

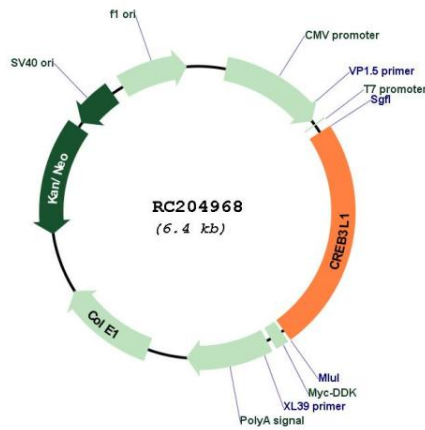
RefSeq ORF: 1560 bp

Locus ID: 90993

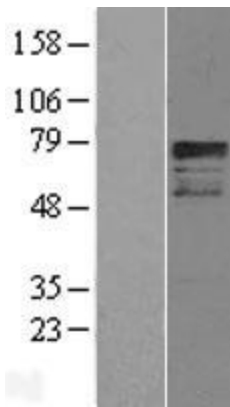
UniProt ID: [Q96BA8](#)
Cytogenetics: 11p11.2
Domains: BRLZ
Protein Families: Transcription Factors
Protein Pathways: Huntington's disease, Melanogenesis, Prostate cancer
MW: 57 kDa

Gene Summary: The protein encoded by this gene is normally found in the membrane of the endoplasmic reticulum (ER). However, upon stress to the ER, the encoded protein is cleaved and the released cytoplasmic transcription factor domain translocates to the nucleus. There it activates the transcription of target genes by binding to box-B elements. [provided by RefSeq, Jun 2013]

Product images:



Circular map for RC204968



Western blot validation of overexpression lysate (Cat# [LY403260]) using anti-DDK antibody (Cat# [TA50011-100]). Left: Cell lysates from untransfected HEK293T cells; Right: Cell lysates from HEK293T cells transfected with RC204968 using transfection reagent MegaTran 2.0 (Cat# [TT210002]).