

Product datasheet for **RC204967**

PLD4 (NM_138790) Human Tagged ORF Clone

Product data:

Product Type:	Expression Plasmids
Product Name:	PLD4 (NM_138790) Human Tagged ORF Clone
Tag:	Myc-DDK
Symbol:	PLD4
Synonyms:	C14orf175
Mammalian Cell Selection:	Neomycin
Vector:	pCMV6-Entry (PS100001)
E. coli Selection:	Kanamycin (25 ug/mL)



[View online »](#)

ORF Nucleotide Sequence:

>RC204967 ORF sequence
 Red=Cloning site Blue=ORF Green=Tags(s)

TTTTGTAATACGACTCACTATAGGGCGGCCGGAATTCGTCGACTGGATCCGGTACCGAGGAGATCTGCC
 GCC**CGATCGCC**

ATGCTGAAGCCTCTTTGAAAGCAGCAGTGGCCCCACATGGCCATGCTCCATGCCGCCCCGCCGCCGT
 GGGACAGAGAGGCTGGCAGTTCAGAGTCTGGGAGCGCTGGCTGTGCTGTGGCTGGGCTCCGTGGCTCT
 TATCTGCCTCCTGTGGCAAGTGCCCGTCTCCACCTGGGGCCAGGTGCAGCCCAAGGACGTGCCAGG
 TCCTGGGAGCATGGCTCCAGCCAGCTTGGGAGCCCTGGAAGCAGAGGCCAGGCAGCAGAGGGACTCCT
 GCCAGCTTGTCTTGTGAAAGCATCCCCAGGACCTGCCATCTGCAGCCGGCAGCCCTCTGCCAGCC
 TCTGGGCCAGGCCTGGCTGCAGTGTGGACACTGCCAGGAGAGCGTCCACGTGGCTTCATACTACTGG
 TCCCTCACAGGGCTGACATCGGGTCAACGACTCGTCTCCAGCTGGGAGAGGCTCTTCTGCAGAAGC
 TGCAGCAGCTGTGGCAGGAACATTTCCCTGGCTGTGGCCACCAGCAGCCGACACTGGCCAGGACATC
 CACCGACTGCAGTTCTGGCTGCCGAGGTGCCATGTACGACAGGTGCCATGGGGCGGCTCACCAGG
 GGTGTTTTGCACTCCAAATTCGGGTTGTGGATGGACGGCACATATACATGGGCAGTGCCAAATGGACT
 GGCGGTCTCTGACGCAGGTGAAGGAGCTTGGCGCTGTCATCTATAACTGCAGCCACTGGCCCAAGACCT
 GGAGAAGACCTTCCAGACCTACTGGGACTGGGGTGCCCAAGGCTGTCTCCCCAAAACCTGGCCTCAG
 AACTTCTCATCTCACTTCAACCGTTTCCAGCCCTCCACGGCCTCTTTGATGGGGTGCCCAACTGCCT
 ACTTCTCAGCGTCGCCACCAGCACTCTGTCCCAGGGCCGACCCGGGACCTGGAGGCGCTGTGGCGGT
 GATGGGGAGCGCCAGGAGTTCATCTATGCCTCCGTGATGGAGTATTTCCCACCACGCGCTTACGCCAC
 CCCCAGGACTGTGGCCGGTGTGGACAACGCGCTGCGGGCGGCAGCCTTCGGCAAGGGCGTGGCGGTG
 GCCTGTGGTGGCTGCGGACTCAACACGGACCCACCATGTTCCCTACCTGCGGTCCCTGCAGGCGCT
 CAGCAACCCCGCGCCAACGTCTCTGTGGACTGAAAGTCTTTCATCGTGCCGGTGGGGAACCATCCAAC
 ATCCCATTCAGCAGGTTGAACCACAGCAAGTTCATGGTACGGAGAAGGCAGCCTACATAGGCACCTCCA
 ACTGGTCGGAGGATTACTTACGACGACGGCGGGGTGGGCTTGGTGGTACCCAGAGCCCTGGCGCGCA
 GCCCGGGGGCCACGGTGCAGGAGCAGCTGCGGCAGCTCTTTGAGCGGGACTGGAGTTCGCGCTACGCC
 GTCGGCTGGACGGACAGGCTCCGGGCCAGGACTGCGTTTGGCAGGGC

ACGCGTACGCGGCCGCTCGAGCAGAACTCATCTCAGAAGAGGATCTGGCAGCAAATGATATCTGGATT
 ACAAGGATGACGACGATAAGGTTTAA

Protein Sequence:

>RC204967 protein sequence
 Red=Cloning site Green=Tags(s)

MLKPLWKA AVAPTWP CSMPPRRP WDR EAGTLQVL GALAVLW LGSVALIC LLWQVPRPPTWGVQPKDVPR
 SWEHGSSPAWEPL EAEARQ RDSQQLV L VESIPQDLPSAAGSPSAQPLGQAWLQLLDTAQESVHVASYW
 SLTGPDIGVNDSSQLGEALLQKLQQLLGRNISLAVATSSPTLARTSTDQLVLAARGAHRVQVPMGRLTR
 GVLHSKFVVDGRHIYMG SANMDWRSLTQVKELGAVIYNCSHLAQDLEKTFQTYWVLGVPKAVLPKTPWQ
 NFSSHFNRFPFHGLFDGVPTTAYFSASPPALCPQGRTRDLEALLAVMGSAQEFIYASVMEYFPTTRFSH
 PPRYWPVLDNALRAAAF GKVRVRLLVGCLNTDPTMFPYLRSLQALSNPAANVSDVKVFI VPGVNHNSN
 IPFSRVNHSKFMVTEKAAYIGTSN WSEDFYSSTAGVGLVVTQSPGAQPAGATVQEQLRQLFERDWSSRYA
 VGLDGGQAPGQDCVWQG

TRTRPLEQKLISEEDLAANDILDYKDDDDKV

Chromatograms:

https://cdn.origene.com/chromatograms/mk6175_h09.zip

Restriction Sites:

Sgfl-Mlul

Cloning Scheme:


ACCN: NM_138790

ORF Size: 1518 bp

OTI Disclaimer: The molecular sequence of this clone aligns with the gene accession number as a point of reference only. However, individual transcript sequences of the same gene can differ through naturally occurring variations (e.g. polymorphisms), each with its own valid existence. This clone is substantially in agreement with the reference, but a complete review of all prevailing variants is recommended prior to use. [More info](#)

OTI Annotation: This clone was engineered to express the complete ORF with an expression tag. Expression varies depending on the nature of the gene.

Components: The ORF clone is ion-exchange column purified and shipped in a 2D barcoded Matrix tube containing 10ug of transfection-ready, dried plasmid DNA (reconstitute with 100 ul of water).

Reconstitution Method:

1. Centrifuge at 5,000xg for 5min.
2. Carefully open the tube and add 100ul of sterile water to dissolve the DNA.
3. Close the tube and incubate for 10 minutes at room temperature.
4. Briefly vortex the tube and then do a quick spin (less than 5000xg) to concentrate the liquid at the bottom.
5. Store the suspended plasmid at -20°C. The DNA is stable for at least one year from date of shipping when stored at -20°C.

Note: Plasmids are not sterile. For experiments where strict sterility is required, filtration with 0.22um filter is required.

RefSeq: [NM_138790.5](#)

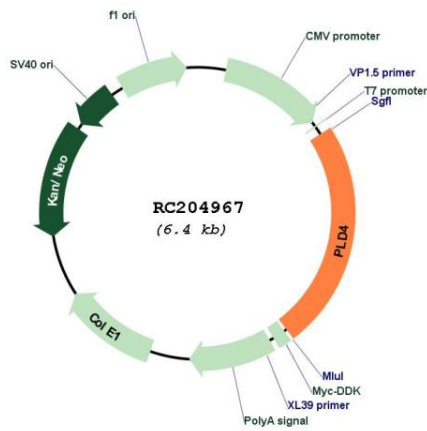
RefSeq Size: 1964 bp

RefSeq ORF: 1521 bp

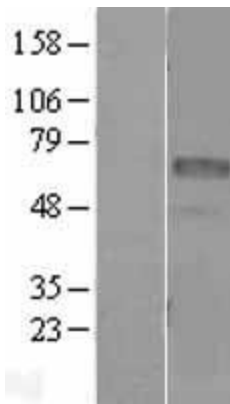
Locus ID: 122618

UniProt ID: [Q96BZ4](#)
 Cytogenetics: 14q32.33
 Domains: PLDc
 Protein Families: Transmembrane
 MW: 55.6 kDa
 Gene Summary: 5'→3' DNA exonuclease which digests single-stranded DNA (ssDNA). Regulates inflammatory cytokine responses via the degradation of nucleic acids, by reducing the concentration of ssDNA able to stimulate TLR9, a nucleotide-sensing receptor. Involved in phagocytosis of activated microglia.[UniProtKB/Swiss-Prot Function]

Product images:



Circular map for RC204967



Western blot validation of overexpression lysate (Cat# [LY403375]) using anti-DDK antibody (Cat# [TA50011-100]). Left: Cell lysates from untransfected HEK293T cells; Right: Cell lysates from HEK293T cells transfected with RC204967 using transfection reagent MegaTran 2.0 (Cat# [TT210002]).