

## Product datasheet for **RC204961**

### FLCN (NM\_144606) Human Tagged ORF Clone

#### Product data:

Product Type:	Expression Plasmids
Product Name:	FLCN (NM_144606) Human Tagged ORF Clone
Tag:	Myc-DDK
Symbol:	FLCN
Synonyms:	BHD; DENND8B; FLCL
Mammalian Cell Selection:	Neomycin
Vector:	pCMV6-Entry (PS100001)
E. coli Selection:	Kanamycin (25 ug/mL)
ORF Nucleotide Sequence:	>RC204961 ORF sequence Red=Cloning site Blue=ORF Green=Tags(s)

TTTTGTAATACGACTCACTATAGGGCGCCGGGAATTCGTCGACTGGATCCGGTACCGAGGAGATCTGCC  
GCC**CGATCGCC**

ATGAATGCCATCGTGGCTCTCTGCCACTTCTGCGAGCTCCACGGCCCCGCACTCTTTCTGCACGGAGG  
TGCTGCACGCCCCACTTCTCAAGGGGATGGGAATGAGGACAGTCCTGGCCAGGGTGAGCAGGCGGAAGA  
AGAGGAAGGTGGCATTGATGAACAGTCGGATGCGTGCGCACAGCCCCGAGAGGGGGCCAGCGTCGAG  
TCCAGCAGCCCCGGGCCCCAAAAAGTCGGACATGTGCGAGGGCTGCCGGTCACTTGTGCAGGGCACCCGG  
GATATATCAGCCATGATAAAGAGACCTCCATTAATACGTCAGCCACCAGCACCCAGCCACCCAGCT  
CTTCAGCATTGTCCGCCAGGCCTGTGTCCGGAGCCTGAGCTGTGAGGTCTGCCCTGGCCGTGAAGGCCCC  
ATCTTCTTCGGAGATGAGCAGCACGGCTTTGTGTTTCAGCCACACCTTCTTCATCAAGGACAGCCTGGCCA  
GGGGCTTCCAGCGCTGGTACAGCATCATCACCATCATGATGGACCGGATCTACCTCATCAACTCCTGGCC  
CTTCTGCTGGGGAAGGTCCGGGAATCATCGATGAGCTCCAGGGCAAGGCGCTCAAGGTGTTTGAGGCA  
GAGCAGTTTGGATGCCACAGCGTGCTCAGAGGATGAACACAGCCTTACGCCATTCTACACCAGAGGA  
ACGGCAACGCCCGCCGCTCGCTGACATCGCTGACAAGTGATGACAACCTGTGGGCGTGCCTGCACACCTC  
CTTTGCCCTGGCTCCTGAAGGCGTGTGGCAGCCGGCTGACCGAGAAGCTCCTGGAAGGTGCTCCGACCGAG  
GATACCTTGGTCCAGATGGAGAAGCTCGCTGGTGAGGCAGGGGTGCTGTTGCCGGGCCTTGCCCGGAT  
GGCCGTGGGGCGGTACCGCTGTCTGCTCCTGGCAGGAATCGCTGAGGGAGGAAACGCGGCTCTGAA  
TCAGCCAGAACGAGCCTTCGGGAAGCTCACCTCCGATCTCGGTG

**ACGCGT**ACGCGGCCGCTCGAGCAGAACTCATCTCAGAAGAGGATCTGGCAGCAATGATATCCTGGATT  
ACAAGGATGACGACGATAAGGTTTAA



[View online »](#)

**Protein Sequence:** >RC204961 protein sequence  
Red=Cloning site Green=Tags(s)

MNAIVALCHFCELHGPRTLFCTEVLHAPLPQGDGNEDSPGQGEQAEEEEGGIQMNSRMRAHSPAEGASVE  
 SSSPGPKKSDMCEGCRSLAAGHPGYISHDKETSIKYVSHQHPSHPQLFSIVRQACVRSLSCEVCPGREGP  
 IFFGDEQHGFVFSHTFFIKDSLARGFQRWYSIITIMMDRIYLINSWPFLLGKVRGIIDELQGKKLVFEA  
 EQFGCPQRAQRMNTAFTPFLHQRNGNAARSLTSLTSDDNLWACLHTSFAWLLKACGSRLTEKLLEGAPTE  
 DTLVQMEKLAGVLLPGPWGPWPGGTSCLLSWQESLREGNAALNQPRTSLREAHPPISV

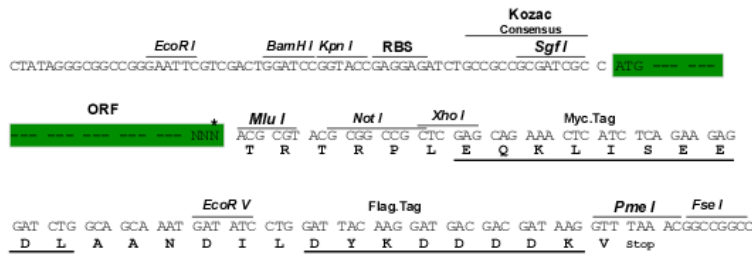
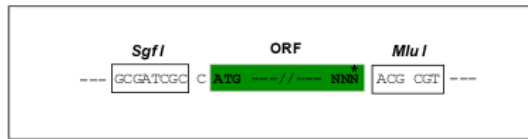
TRTRPLEQKLISEEDLAANDILDYKDDDDKV

**Chromatograms:** [https://cdn.origene.com/chromatograms/mk6062\\_f12.zip](https://cdn.origene.com/chromatograms/mk6062_f12.zip)

**Restriction Sites:** SgfI-MluI

**Cloning Scheme:**

Cloning sites used for ORF Shuttling:



\* The last codon before the Stop codon of the ORF

**ACCN:** NM\_144606

**ORF Size:** 1026 bp

**OTI Disclaimer:** The molecular sequence of this clone aligns with the gene accession number as a point of reference only. However, individual transcript sequences of the same gene can differ through naturally occurring variations (e.g. polymorphisms), each with its own valid existence. This clone is substantially in agreement with the reference, but a complete review of all prevailing variants is recommended prior to use. [More info](#)

**OTI Annotation:** This clone was engineered to express the complete ORF with an expression tag. Expression varies depending on the nature of the gene.

**Components:** The ORF clone is ion-exchange column purified and shipped in a 2D barcoded Matrix tube containing 10ug of transfection-ready, dried plasmid DNA (reconstitute with 100 ul of water).

**Reconstitution Method:**

1. Centrifuge at 5,000xg for 5min.
2. Carefully open the tube and add 100ul of sterile water to dissolve the DNA.
3. Close the tube and incubate for 10 minutes at room temperature.
4. Briefly vortex the tube and then do a quick spin (less than 5000xg) to concentrate the liquid at the bottom.
5. Store the suspended plasmid at -20°C. The DNA is stable for at least one year from date of shipping when stored at -20°C.

**Note:** Plasmids are not sterile. For experiments where strict sterility is required, filtration with 0.22um filter is required.

**RefSeq:** [NM\\_144606.7](#)

**RefSeq Size:** 1760 bp

**RefSeq ORF:** 1029 bp

**Locus ID:** 201163

**UniProt ID:** [Q8NFG4](#)

**Cytogenetics:** 17p11.2

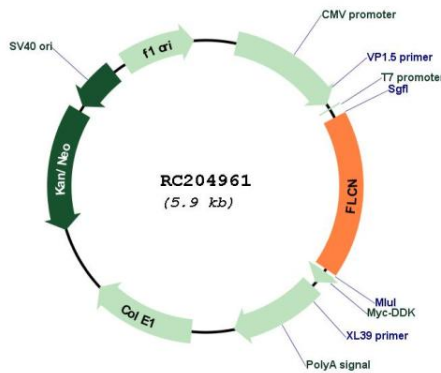
**Protein Families:** Druggable Genome

**Protein Pathways:** Renal cell carcinoma

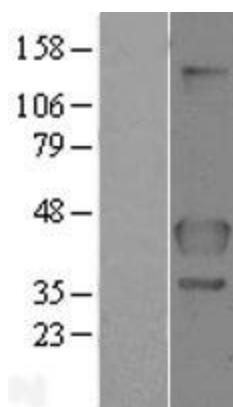
**MW:** 37.7 kDa

**Gene Summary:** This gene is located within the Smith-Magenis syndrome region on chromosome 17. Mutations in this gene are associated with Birt-Hogg-Dube syndrome, which is characterized by fibrofolliculomas, renal tumors, lung cysts, and pneumothorax. Alternative splicing of this gene results in two transcript variants encoding different isoforms. [provided by RefSeq, Jul 2008]

### Product images:



Circular map for RC204961



Western blot validation of overexpression lysate (Cat# [LY403410]) using anti-DDK antibody (Cat# [TA50011-100]). Left: Cell lysates from untransfected HEK293T cells; Right: Cell lysates from HEK293T cells transfected with RC204961 using transfection reagent MegaTran 2.0 (Cat# [TT210002]).