

Product datasheet for **RC204958**

IFI6 (NM_002038) Human Tagged ORF Clone

Product data:

Product Type: Expression Plasmids
Product Name: IFI6 (NM_002038) Human Tagged ORF Clone
Tag: Myc-DDK
Symbol: IFI6
Synonyms: 6-16; FAM14C; G1P3; IFI-6-16; IFI616
Mammalian Cell Selection: Neomycin
Vector: pCMV6-Entry (PS100001)
E. coli Selection: Kanamycin (25 ug/mL)
ORF Nucleotide Sequence: >RC204958 ORF sequence
Red=Cloning site Blue=ORF Green=Tags(s)

TTTTGTAATACGACTCACTATAGGGCGCCGGGAATTCGTCGACTGGATCCGGTACCGAGGAGATCTGCC
GCC**CGATCGCC**

ATGCGGCAGAAGGCGGTATCGTTTTCTTGTGCTACCTGCTGCTTCACTTGCAGTGGGTGGAGGCAG
GTAAGAAAAAGTGTCTGGAGAGCTCGGACAGCGGCTCCGGTTCTGGAAGGCCCTGACCTTCATGGCCGT
CGGAGGAGGACTCGCAGTCGCCGGGCTGCCCGCTGGGTTACCGGCGCCGGCATCGCGCAACTCG
GTGGTGCCTCGCTGATGAGCTGGTCTGCGATCCTGAATGGGGCGGCGTGCCCGCGGGGGCTAGTGG
CCACGCTGCAGAGCCTCGGGGCTGGTGGCAGCAGCGTCGTCATAGGTAATATTGGTGCCCTGATGGGCTA
CGCCACCACAAGTATCTCGATAGTGAGGAGGATGAGGAG

ACGCGTACGCGGCCGCTCGAGCAGAACTCATCTCAGAAGAGGATCTGGCAGCAAATGATATCCTGGATT
ACAAGGATGACGACGATAAGGTTTAA

Protein Sequence: >RC204958 protein sequence
Red=Cloning site Green=Tags(s)

MRQKAVSLFLCYLLLF TCSGVEAGKKKCSSESDSGSGFWKALTFMAVGGGLAVAGLPALGFTGAGIAANS
VAASLMSWSAILNGGVPAGGLVATLQSLGAGSSVIGNIGALMGYATHKYLDSEEDDEE

TRTRPLEQKLISEEDLAANDILDYKDDDDKV

Chromatograms: https://cdn.origene.com/chromatograms/mk6425_d08.zip

Restriction Sites: SgfI-MluI



[View online »](#)

Cloning Scheme:


ACCN: NM_002038

ORF Size: 390 bp

OTI Disclaimer: The molecular sequence of this clone aligns with the gene accession number as a point of reference only. However, individual transcript sequences of the same gene can differ through naturally occurring variations (e.g. polymorphisms), each with its own valid existence. This clone is substantially in agreement with the reference, but a complete review of all prevailing variants is recommended prior to use. [More info](#)

OTI Annotation: This clone was engineered to express the complete ORF with an expression tag. Expression varies depending on the nature of the gene.

Components: The ORF clone is ion-exchange column purified and shipped in a 2D barcoded Matrix tube containing 10ug of transfection-ready, dried plasmid DNA (reconstitute with 100 ul of water).

- Reconstitution Method:**
1. Centrifuge at 5,000xg for 5min.
 2. Carefully open the tube and add 100ul of sterile water to dissolve the DNA.
 3. Close the tube and incubate for 10 minutes at room temperature.
 4. Briefly vortex the tube and then do a quick spin (less than 5000xg) to concentrate the liquid at the bottom.
 5. Store the suspended plasmid at -20°C. The DNA is stable for at least one year from date of shipping when stored at -20°C.

Note: Plasmids are not sterile. For experiments where strict sterility is required, filtration with 0.22um filter is required.

RefSeq: [NM_002038.4](#)

RefSeq Size: 836 bp

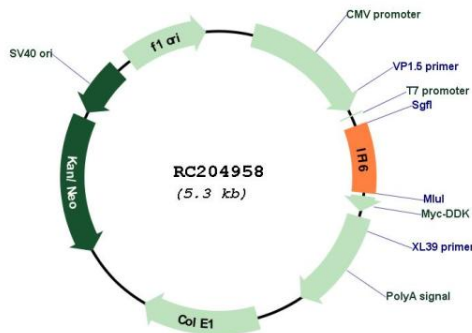
RefSeq ORF: 393 bp

Locus ID: 2537
UniProt ID: [P09912](#)
Cytogenetics: 1p35.3

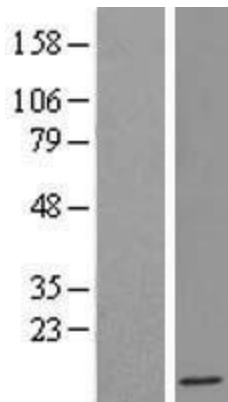
Protein Families: Transmembrane
MW: 12.9 kDa

Gene Summary: This gene was first identified as one of the many genes induced by interferon. The encoded protein may play a critical role in the regulation of apoptosis. A minisatellite that consists of 26 repeats of a 12 nucleotide repeating element resembling the mammalian splice donor consensus sequence begins near the end of the second exon. Alternatively spliced transcript variants that encode different isoforms by using the two downstream repeat units as splice donor sites have been described. [provided by RefSeq, Jul 2008]

Product images:



Circular map for RC204958



Western blot validation of overexpression lysate (Cat# [LY419572]) using anti-DDK antibody (Cat# [TA50011-100]). Left: Cell lysates from untransfected HEK293T cells; Right: Cell lysates from HEK293T cells transfected with RC204958 using transfection reagent MegaTran 2.0 (Cat# [TT210002]).