

Product datasheet for RC204950

CBR1 (NM_001757) Human Tagged ORF Clone

Product data:

Product Type:	Expression Plasmids
Product Name:	CBR1 (NM_001757) Human Tagged ORF Clone
Tag:	Myc-DDK
Symbol:	CBR1
Synonyms:	CBR; hCBR1; PG-9-KR; SDR21C1
Mammalian Cell Selection:	Neomycin
Vector:	pCMV6-Entry (PS100001)
E. coli Selection:	Kanamycin (25 ug/mL)
ORF Nucleotide Sequence:	>RC204950 ORF sequence Red=Cloning site Blue=ORF Green=Tags(s)

TTTTGTAATACGACTCACTATAGGGCGCCGGGAATTCGTCGACTGGATCCGGTACCGAGGAGATCTGCC
GCC**CGATCGCC**

ATGTCGTCGGGCATCCATGTAGCGCTGGTACTGGAGGCAACAAGGGCATCGGCTTGCCATCGTGCGCG
ACCTGTGCCGGCTGTTCTCGGGGACGTGGTGCTCACGGCGCGGACGTGACGCGGGGCCAGGCGGCCGT
ACAGCAGCTGCAGGCGGAGGGCCTGAGCCCGCGTTCCACCAGCTGGACATCGACGATCTGCAGAGCATC
CGCGCCCTGCGCGACTTCTGCGCAAGGAGTACGGGGCCTGGACGTGCTGGTCAACAACGCGGGCATCG
CCTTCAAGTTGCTGATCCACACCCTTTCATATTCAAGCTGAAGTGACGATGAAAAAAATTTCTTTGG
TACCCGAGATGTGTGCACAGAATTACTCCTCTAATAAAACCCCAAGGGAGAGTGGTGAACGTATCTAGC
ATCATGAGCGTCAGAGCCCTTAAAAGCTGCAGCCAGAGCTGCAGCAGAAGTTCCGCAGTGAGACCATCA
CTGAGGAGGAGCTGGTGGGGCTCATGAACAAGTTTGTGGAGGATACAAAGAAGGGAGTGCACCAGAAGGA
GGGCTGGCCAGCAGCGCATACGGGGTACGAAGATTGGCGTCACCGTTCTGTCCAGGATCCACGCCAGG
AAACTGAGTGAGCAGAGGAAAGGGGACAAGATCCTCCTGAATGCCTGCTGCCAGGTTGGTGAGAACTG
ACATGGCGGGACCAAGGCCACCAAGAGCCAGAAGAAGTGCAGAGACCCTGTGACTTGGCCCTTTT
GCCCCAGATGCTGAGGGTCCCCATGGACAATTTGTTTCAGAGAAGAGAGTTGAACAGTGG

ACGCGTACGCGGCCGCTCGAGCAGAACTCATCTCAGAAGAGGATCTGGCAGCAAATGATATCCTGGATT
ACAAGGATGACGACGATAAGGTTTAA



[View online »](#)

Protein Sequence: >RC204950 protein sequence
Red=Cloning site Green=Tags(s)

MSSGIHVALVTGGNKGIGLAIVRDL CRLFSGDVVLTARDVTRGQAAVQQLQAEGLSPRFHQLDIDDLQSI
 RALRDFLRKEYGGLDVLVNNAGIAFKVADPTPFHIQAEVTMKTNFFGTRDVCTELLPLIKPQGRVNVSS
 IMSVRALKSCSPELQQKFRSETITEEELVGLMKNKFVEDTKKGVHQKEGWPSSAYGVTKIGVTVLSRIHAR
 KLSEQRKGDKILLNACCPGWVRTDMAGPKATKSPEEGAETPVYLLALLPPDAEGPHGQFVSEKRVEQW

TRTRPLEQKLISEEDLAANDILDYKDDDDKV

Chromatograms: https://cdn.origene.com/chromatograms/mk6171_b03.zip

Restriction Sites: SgfI-MluI

Cloning Scheme:

Cloning sites used for ORF Shuttling:



* The last codon before the Stop codon of the ORF

ACCN: NM_001757

ORF Size: 831 bp

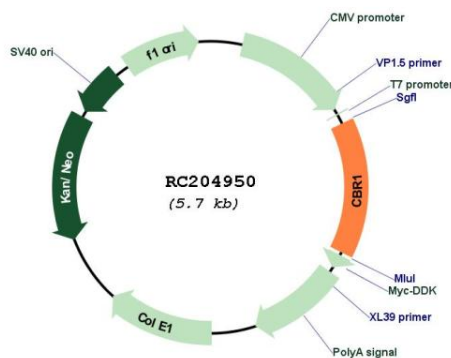
OTI Disclaimer: The molecular sequence of this clone aligns with the gene accession number as a point of reference only. However, individual transcript sequences of the same gene can differ through naturally occurring variations (e.g. polymorphisms), each with its own valid existence. This clone is substantially in agreement with the reference, but a complete review of all prevailing variants is recommended prior to use. [More info](#)

OTI Annotation: This clone was engineered to express the complete ORF with an expression tag. Expression varies depending on the nature of the gene.

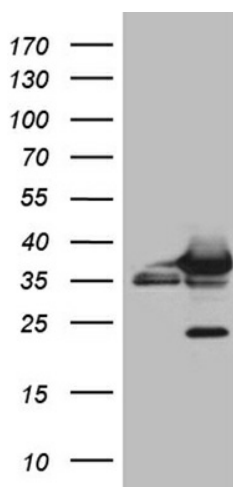
Components: The ORF clone is ion-exchange column purified and shipped in a 2D barcoded Matrix tube containing 10ug of transfection-ready, dried plasmid DNA (reconstitute with 100 ul of water).

Reconstitution Method:	<ol style="list-style-type: none">1. Centrifuge at 5,000xg for 5min.2. Carefully open the tube and add 100ul of sterile water to dissolve the DNA.3. Close the tube and incubate for 10 minutes at room temperature.4. Briefly vortex the tube and then do a quick spin (less than 5000xg) to concentrate the liquid at the bottom.5. Store the suspended plasmid at -20°C. The DNA is stable for at least one year from date of shipping when stored at -20°C.
RefSeq:	NM_001757.4
RefSeq Size:	1321 bp
RefSeq ORF:	834 bp
Locus ID:	873
UniProt ID:	P16152
Cytogenetics:	21q22.12
Domains:	adh_short
Protein Families:	Druggable Genome
Protein Pathways:	Arachidonic acid metabolism, Metabolic pathways
MW:	30.4 kDa
Gene Summary:	The protein encoded by this gene belongs to the short-chain dehydrogenases/reductases (SDR) family, which function as NADPH-dependent oxidoreductases having wide specificity for carbonyl compounds, such as quinones, prostaglandins, and various xenobiotics. Alternatively spliced transcript variants have been found for this gene. [provided by RefSeq, Nov 2013]

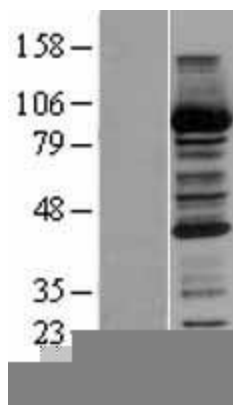
Product images:



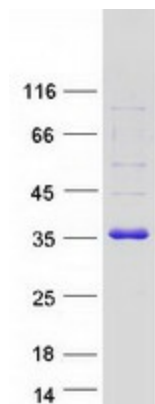
Circular map for RC204950



HEK293T cells were transfected with the pCMV6-ENTRY control (Cat# [PS100001], Left lane) or pCMV6-ENTRY CBR1 (Cat# RC204950, Right lane) cDNA for 48 hrs and lysed. Equivalent amounts of cell lysates (5 ug per lane) were separated by SDS-PAGE and immunoblotted with anti-CBR1 (Cat# [TA809840])(1:2000). Positive lysates [LY400669] (100ug) and [LC400669] (20ug) can be purchased separately from OriGene.



Western blot validation of overexpression lysate (Cat# [LY400669]) using anti-DDK antibody (Cat# [TA50011-100]). Left: Cell lysates from untransfected HEK293T cells; Right: Cell lysates from HEK293T cells transfected with RC204950 using transfection reagent MegaTran 2.0 (Cat# [TT210002]).



Coomassie blue staining of purified CBR1 protein (Cat# [TP304950]). The protein was produced from HEK293T cells transfected with CBR1 cDNA clone (Cat# RC204950) using MegaTran 2.0 (Cat# [TT210002]).