

Product datasheet for **RC204948**

EFHD2 (NM_024329) Human Tagged ORF Clone

Product data:

Product Type:	Expression Plasmids
Product Name:	EFHD2 (NM_024329) Human Tagged ORF Clone
Tag:	Myc-DDK
Symbol:	EFHD2
Synonyms:	SWS1
Mammalian Cell Selection:	Neomycin
Vector:	pCMV6-Entry (PS100001)
E. coli Selection:	Kanamycin (25 ug/mL)
ORF Nucleotide Sequence:	>RC204948 ORF sequence Red=Cloning site Blue=ORF Green=Tags(s)

TTTTGTAATACGACTCACTATAGGGCGGCCGGAATTCGTCGACTGGATCCGGTACCGAGGAGATCTGCC
GCC**CGATCGCC**

ATGGCCACGGACGAGCTGGCCACCAAGCTGAGCCGGCGGCTGCAGATGGAGGGCGAGGGCGGCGGAGAG
CCCCGGAGCAGCCCGGGCTGAACGGGGCAGCGGCGGCGGCGGGGGCACCCGACGAGGCGGCCGAGGC
GCTGGGCAGCGCGGACTGCGAGCTGAGCGCCAAGCTGCTGCGGCGCGCAGACCTCAACCAGGGCATCGGC
GAGCCCCAGTCGCCAGCCCGCGCTTCAACCCCTACACCGAGTTCAAGGAGTTCTCCAGGAAGCAGA
TCAAGGACATGGAGAAGATGTTCAAGCAGTATGATGCCGGCGGGACGGTTCATCGACCTGATGGAGCT
AAAACATGATGGAGAACTTGGGGCCCTCAGACCCACCTGGGCTGAAAAACATGATCAAGGAGGTG
GATGAGGACTTTGACAGCAAGCTGAGCTTCCGGGAGTTCTCCTGATCTTCCGCAAGGCGCGGCCGGGG
AGCTTCAGGAGGACAGCGGGCTGTGCGTGCTGGCCCGCCTCTCTGAGATCGACGTCTCCAGTGAGGGTGT
CAAGGGGGCCAAGAGCTTCTTTGAGGCCAAGGTCCAGGCCATCAACGTGTCCAGCCGCTTCGAGGAGGAG
ATCAAGGCAGAGCAGGAGGAAAGGAAGAAGCAGGCGGAGGAGATGAAGCAGCGGAAAGCGGCCTTCAAGG
AGCTGCAGTCCACCTTTAAG

ACGCGTACGCGGCCGCTCGAGCAGAACTCATCTCAGAAGAGGATCTGGCAGCAAATGATATCCTGGATT
ACAAGGATGACGACGATAAGGTTTAA



[View online »](#)

Protein Sequence: >RC204948 protein sequence
Red=Cloning site Green=Tags(s)

MATDELATKLSRRLQMEGEGGGTPEQPGLNGAAAAAGAPDEAAEALGSADCEL SAKLLRRADLNQGIG
 EPQSPSRRVFNPYTEFKEFSRKQIKDMEKMFQYDAGRDFIDLMEKLMMEKLGAPQTHLGLKNMIKEV
 DEDFDSKLSFREFLLIFRKAAGELQEDSGLCVLARLSEIDVSSEGVKGAKSFFEAKVQAINVSSRFEEE
 IKAEQEERKKQAEEMKQRKA AFKELQSTFK

TRTRPLEQKLISEEDLAANDILDYKDDDDKV

Chromatograms: https://cdn.origene.com/chromatograms/mk6268_g06.zip

Restriction Sites: SgfI-MluI

Cloning Scheme:

Cloning sites used for ORF Shuttling:



* The last codon before the Stop codon of the ORF

ACCN: NM_024329

ORF Size: 720 bp

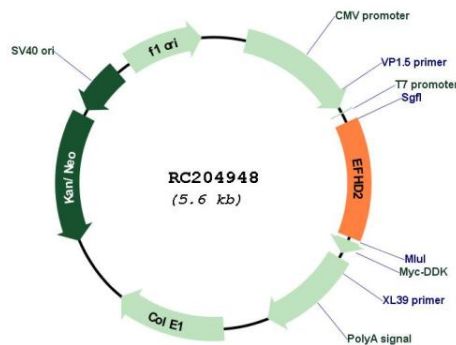
OTI Disclaimer: Due to the inherent nature of this plasmid, standard methods to replicate additional amounts of DNA in E. coli are highly likely to result in mutations and/or rearrangements. Therefore, OriGene does not guarantee the capability to replicate this plasmid DNA. Additional amounts of DNA can be purchased from OriGene with batch-specific, full-sequence verification at a reduced cost. Please contact our customer care team at custsupport@origene.com or by calling 301.340.3188 option 3 for pricing and delivery.

The molecular sequence of this clone aligns with the gene accession number as a point of reference only. However, individual transcript sequences of the same gene can differ through naturally occurring variations (e.g. polymorphisms), each with its own valid existence. This clone is substantially in agreement with the reference, but a complete review of all prevailing variants is recommended prior to use. [More info](#)

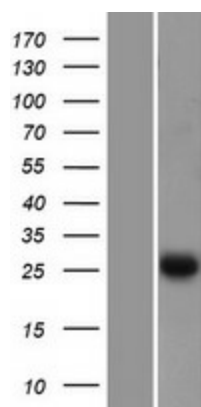
OTI Annotation: This clone was engineered to express the complete ORF with an expression tag. Expression varies depending on the nature of the gene.

Components:	The ORF clone is ion-exchange column purified and shipped in a 2D barcoded Matrix tube containing 10ug of transfection-ready, dried plasmid DNA (reconstitute with 100 ul of water).
Reconstitution Method:	<ol style="list-style-type: none"> 1. Centrifuge at 5,000xg for 5min. 2. Carefully open the tube and add 100ul of sterile water to dissolve the DNA. 3. Close the tube and incubate for 10 minutes at room temperature. 4. Briefly vortex the tube and then do a quick spin (less than 5000xg) to concentrate the liquid at the bottom. 5. Store the suspended plasmid at -20°C. The DNA is stable for at least one year from date of shipping when stored at -20°C.
Note:	Plasmids are not sterile. For experiments where strict sterility is required, filtration with 0.22um filter is required.
RefSeq:	<u>NM_024329.6</u>
RefSeq Size:	2424 bp
RefSeq ORF:	723 bp
Locus ID:	79180
UniProt ID:	<u>Q96C19</u>
Cytogenetics:	1p36.21
Domains:	EFh
MW:	26.7 kDa
Gene Summary:	May regulate B-cell receptor (BCR)-induced immature and primary B-cell apoptosis. Plays a role as negative regulator of the canonical NF-kappa-B-activating branch. Controls spontaneous apoptosis through the regulation of BCL2L1 abundance.[UniProtKB/Swiss-Prot Function]

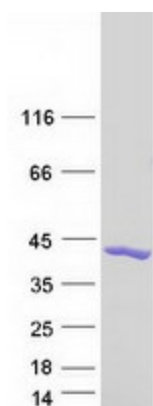
Product images:



Circular map for RC204948



Western blot validation of overexpression lysate (Cat# [LY411309]) using anti-DDK antibody (Cat# [TA50011-100]). Left: Cell lysates from untransfected HEK293T cells; Right: Cell lysates from HEK293T cells transfected with RC204948 using transfection reagent MegaTran 2.0 (Cat# [TT210002]).



Coomassie blue staining of purified EFHD2 protein (Cat# [TP304948]). The protein was produced from HEK293T cells transfected with EFHD2 cDNA clone (Cat# RC204948) using MegaTran 2.0 (Cat# [TT210002]).