

Product datasheet for **RC204946**

LRFN4 (NM_024036) Human Tagged ORF Clone

Product data:

Product Type:	Expression Plasmids
Product Name:	LRFN4 (NM_024036) Human Tagged ORF Clone
Tag:	Myc-DDK
Symbol:	LRFN4
Synonyms:	FIGLER6; SALM3; SALM3.
Mammalian Cell Selection:	Neomycin
Vector:	pCMV6-Entry (PS100001)
E. coli Selection:	Kanamycin (25 ug/mL)



[View online »](#)

ORF Nucleotide
Sequence:

>RC204946 ORF sequence
Red=Cloning site Blue=ORF Green=Tags(s)

TTTTGTAATACGACTCACTATAGGGCGGCCGGAATTCGTCGACTGGATCCGGTACCGAGGAGATCTGCC
GCC**CGGATCGCC**

ATGGCCCCGCGCTCCTGCTGCTGCTGCTGGCCAGTGGAGCGGCCGCTGCCCGCTGCCCTGCGTCTGCC
AGAACCTGTCCGAGTCGCTCAGCACCCCTGTGCCCACCGAGGCCTGCTGTTGTGCCGCCAACGTGGA
CCGGCGCACAGTGGAGCTGCGGCTGGCTGACAACCTTCATCCAGGCCCTGGGGCCCCCTGACTTCCGCAAC
ATGACGGGACTGGTGGACCTGACACTGTCTCGCAATGCCATCACCCGATTGGGGCCCGCCTTTGGGG
ACCTCGAGAGCCTGCGTTCCTCCACCTTGACGGCAACAGGCTGGTGGAGCTGGGCACCGGGAGCCTCCG
GGGCCCGTCAATCTGCAGCACCTATCCTCAGCGCAACAGCTGGGCCGATCGCGCCGGGAGCCTTC
GACGACTTCTAGAGAGCCTGGAGGACCTGGACCTGTCTACAACAACCTCCGGCAGGTGCCCTGGGCCG
GCATCGGGCCATGCCTGCCCTGCACACCCTCAACCTGGACCATAACCTTATTGACGCACTGCCCCAGG
CGCTTCCGCCAGCTCGGTCAGCTCTCCGCTGGACCTCACCTCAACCGCCTGGCCACGCTGGCTCCG
GACCCGCTTTTCTCTCGTGGGCGTGATGCAGAGGCCTCTCCCGCCCCCTGGTGTGAGCTTTAGCGGGA
ACCCCTGCACACTGCAACTGTGAGCTGCTGTGGTGCGGCGGCTGGCGCGGCCGACGACCTGGAAACGTG
CGCTCCCGCCCGGCTGGCCGGCCGCTACTTCTGGGAGTGCCCGAGGGCGAGTTCTCTGTGAGCCG
CCCCTATTGCCCGCCACACGACGCGCCTCTGGGTGCTGGAAGGCCAGCGGGCCACGCTGCGGTGCCGGG
CCCTGGGTGACCCCGCCTACCATGCACTGGGTGGTCTGACGACCGGTTGGTTGGCAACTCTCCCG
AGCCCGGGCTTTCCCAACGGGACCTTAGAGATTGGGGTGACCGCGCTGGGACGCTGGGGGCTACACC
TGCATCGCCACCAACCCTGCTGGTGAGGCCACAGCCGAGTAGAACTGCGGGTGTGGCCTTGCCCATG
GTGGGAACAGCAGTGCCGAGGGGGCCGCCCCGGGCCCTCGGACATCGCCGCCTCCGCTGCACTGCTGC
CGAGGGTGAGGGGACGCTGGAGTCTGAGCCAGCCGTGCAGGTGACGGAGGTGACCGCCACCTCAGGGCTG
GTGAGCTGGGGTCCCGGGCGGCCAGCCAGCCAGTGTGGATGTTCCAAATCCAGTACAACAGCAGCGAAG
ATGAGACCCTCATCTACCGGATTGTCCAGCCTCCAGCCACCCTTCTGCTGAAGCACCTCGTCCCGG
CGCTGACTATGACCTCTGCCTGTGGCCTGTGACCGGCCGCTGGGCCCTGACCTCACGGCCACCAGG
CTGCTGGGCTGTGCCATTTCTCCAGCTGCCGGCCTCGCCCCTGTGCCACGCCCTGCAGGCCACGTGC
TGGGGGGACCCTGACCGTGGCCGTGGGGGTGTGCTGGTGGCTGCCTTACTGGTCTTCACTGTGGCCTT
GCTGGTTCGGGGCCGGGGGCGGAAATGGCCGCTCCCCCTCAAGCTCAGCCACGTCCAGTCCCAGACC
AATGGAGGCCACAGCCACACCAAGGCCACCCGCGGAGCCCCCGCCCGCCGACGCGCAGCT
GCTCTCTGGACCTGGGAGATGCCGGGTGTACGGTTATGCCAGGCGCCTGGGAGGAGCTGGGCCCGACG
GAGCCACTCTGTGCATGGGGGGTGTCTCGGGCAGGGTGCAGGGGGTAGGAGGCAGCGCCAGCGGCTG
GAAGAGAGTGTGGTG

ACGCGTACGCGGCCGCTCGAGCAGAACTCATCTCAGAAGAGGATCTGGCAGCAATGATATCCTGGATT
ACAAGGATGACGACGATAAGGTTTAA

Protein Sequence: >RC204946 protein sequence
Red=Cloning site Green=Tags(s)

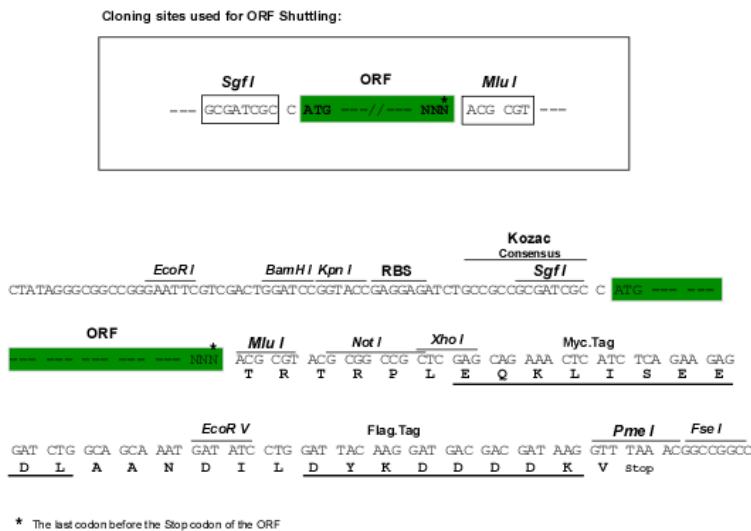
```
MAPPLLLLLLASGAAACPLPCVCQNLSESLSTLCAHRGLLFVPPNVDRRTVELRLADNFIQALGPPDFRN
MTGLVDLTLSRNAITRIGARAFGDLESLRSLHLDGNRLVELGTGSLRGPVNLQHLILSGNQLGRIAPGAF
DDFLESLEDLDLSYNNLRQVPWAGIGAMPALHTLNLHDNLIDALPPGAFQQLGQLSRLDLTSNRLATLAP
DPLFSRGRDAEASPAPLVLSFSGNPLHCNCELLWLRRLARPDDLETASPPGLAGRYFWAVPEGEFSCEP
PLIARHTQRLWVLEQRATLRCRALGDPAPTMHWVGPDDRLVGNSSRARAFPNGTLEIGVTGAGDAGGYT
CIATNPAGEATARVELRVLALPHGGNSSAEGGRGPSDIAASARTAAEGEGTLESEPAVQVTEVTATSGL
VSWGPRPADPVWMFQIQYNSSSEDETLIYRIVPASSHHFLKHLVPGADYDLCLLALSPAAGPSDLTATR
LLGCAHFSTLPASPLCHALQAHVLGGTLVAVGGVLAALLVFTVALLVRGRGAGNRLPLKLSHVQSQT
NGGPSPTPKAHPPRSPPRPQRSCSLDLGDAGCYGYARRLGGAWARRSHSVHGGLLGAGCRGVGSAERL
EESVV
```

TRTRPLEQKLISEEDLAANDILDYKDDDDKV

Chromatograms: https://cdn.origene.com/chromatograms/mk6673_c09.zip

Restriction Sites: SgfI-MluI

Cloning Scheme:



ACCN: NM_024036

ORF Size: 1905 bp

OTI Disclaimer: The molecular sequence of this clone aligns with the gene accession number as a point of reference only. However, individual transcript sequences of the same gene can differ through naturally occurring variations (e.g. polymorphisms), each with its own valid existence. This clone is substantially in agreement with the reference, but a complete review of all prevailing variants is recommended prior to use. [More info](#)

OTI Annotation: This clone was engineered to express the complete ORF with an expression tag. Expression varies depending on the nature of the gene.

Components: The ORF clone is ion-exchange column purified and shipped in a 2D barcoded Matrix tube containing 10ug of transfection-ready, dried plasmid DNA (reconstitute with 100 ul of water).

Reconstitution Method:

1. Centrifuge at 5,000xg for 5min.
2. Carefully open the tube and add 100ul of sterile water to dissolve the DNA.
3. Close the tube and incubate for 10 minutes at room temperature.
4. Briefly vortex the tube and then do a quick spin (less than 5000xg) to concentrate the liquid at the bottom.
5. Store the suspended plasmid at -20°C. The DNA is stable for at least one year from date of shipping when stored at -20°C.

RefSeq: [NM_024036.5](#)

RefSeq Size: 2546 bp

RefSeq ORF: 1908 bp

Locus ID: 78999

UniProt ID: [Q6PIG9](#)

Cytogenetics: 11q13.2

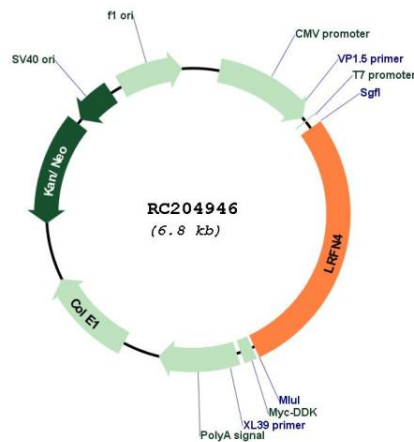
Domains: LRRCT, LRR, ig, LRR_TYP, IGc2, IG, FN3

Protein Families: Transmembrane

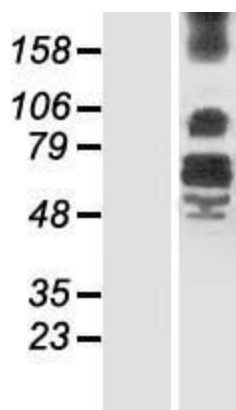
MW: 66.9 kDa

Gene Summary: Promotes neurite outgrowth in hippocampal neurons. May play a role in redistributing DLG4 to the cell periphery (By similarity).[UniProtKB/Swiss-Prot Function]

Product images:



Circular map for RC204946



Western blot validation of overexpression lysate (Cat# [LY411412]) using anti-DDK antibody (Cat# [TA50011-100]). Left: Cell lysates from untransfected HEK293T cells; Right: Cell lysates from HEK293T cells transfected with RC204946 using transfection reagent MegaTran 2.0 (Cat# [TT210002]).