

## Product datasheet for **RC204937**

### Torsin B (TOR1B) (NM\_014506) Human Tagged ORF Clone

#### Product data:

Product Type:	Expression Plasmids
Product Name:	Torsin B (TOR1B) (NM_014506) Human Tagged ORF Clone
Tag:	Myc-DDK
Symbol:	Torsin B
Synonyms:	DQ1
Mammalian Cell Selection:	Neomycin
Vector:	pCMV6-Entry (PS100001)
E. coli Selection:	Kanamycin (25 ug/mL)
ORF Nucleotide Sequence:	>RC204937 ORF sequence Red=Cloning site Blue=ORF Green=Tags(s)

TTTTGTAATACGACTCACTATAGGGCGGCCGGAATTCGTCGACTGGATCCGGTACCGAGGAGATCTGCC  
GCC**CGCATCGCC**

ATGTTGCGGGCTGGGTGGCTCCGGGGCGCGGGCGCTGGCGCTGCTGCTGGCGGCCGAGTGGTGGCGG  
CGTTCGAGCCCATCACCGTGGGCTAGCCATCGGGGCCGCGTCGGCCATCACCGGCTACCTGTCTACAA  
TGACATCTACTGCCGCTTCGCCGAGTGTGCCGCGAGGAGCGGCCGCTCAACGCTTCGGCTCTCAAGCTG  
GATTTGGAGGAGAAGCTGTTGGACAGCATCTAGCCACGGAAGTGATTTCAAGGCGCTGACTGGCTTCA  
GGAACAACAAAAATCCCAAGAAACCACTGACCCTTTCCTTACACGGCTGGGCTGGCACAGGCAAGAATTT  
TGTCAAGTCAAATTTGGCTGAAAATCTTACCCAAAAGGTCTGAAGAGTAACTTTGTCCACTGTTTGTA  
TCGACTCTGCACTTCCCTCATGAGCAGAAGATAAACTGTACCAGGACCAGTTACAGAAGTGGATCCGCG  
GTAATGTGAGTGCATGTGCGAACTCTGTTTTCATATTTGACGAGATGGATAAATGCACCCCGGGATCAT  
TGACGCAATCAAGCCGTTTCTAGACTACTACGAGCAGGTTGACGGAGTGTCTTACCGCAAAGCCATCTTC  
ATCTTTCAGCAATGCAGGCGGGGACCTATAACTAAGACGGCTCTTGACTTTTGGCGGGCCGGAAGAA  
AGAGGGAAGACATTCAGCTGAAGGACCTGGAACCTGTACTGTCTGTCGGAGTCTCAATAATAAACACAG  
TGGCCTGTGGCACAGTGGACTGATCGACAAAAACCTCATTGATTACTTTATCCCCCTCCTGCCTTTGGAG  
TACAGACATGTGAAAATGTGTGAGGGCCGAGATGAGGGCCCGTGGTTCTGCCATAGATGAAGACATTG  
TCACAAGAGTGGCAGAGGAAATGACGTTTTTCCCGAGAGACGAGAAAATCTACTCAGACAAGGGCTGCAA  
GACTGTGCAGTCGCGGCTGGATTCCAC

**ACGCGT**ACGCGGCCGCTCGAGCAGAAACTCATCTCAGAAGAGGATCTGGCAGCAAATGATATCCTGGATT  
ACAAGGATGACGACGATAAGGTTTAA



[View online »](#)

**Protein Sequence:** >RC204937 protein sequence  
Red=Cloning site Green=Tags(s)

MLRAGWLRGAAALALLAARVVAAFEPITVGLAIGAASAITGYLSYNDIYCRFAECCREERPLNASALKL  
 DLEEKLFQQLATEVIFKALTGFRNNKNPKPLTLSLHWAGTGKNFVSQIVAENLHPKGLKSNFVHLFV  
 STLHFPHEQKIKLYQDQLQKWIRGNVSACANSVIFDEMDKLPKGIIDAIKPLDYEQVDGVSYRKAIF  
 IFLSNAGGDLITKALDFWRAGRKREDIQLKDLPEVLSVGVFNNKHSGLWHSGLIDKNLIDYFIPFLPLE  
 YRHVKMCVRAEMRARGSAIDEDIVTRVAEEMTFPRDEKIYSDKGCKTVQSRLDFH

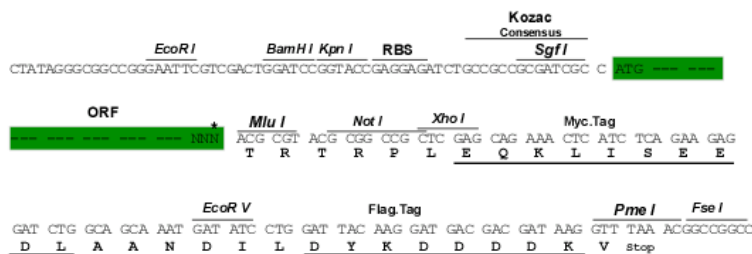
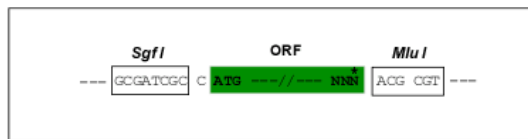
TRTRPLEQKLISEEDLAANDILDYKDDDDKV

**Chromatograms:** [https://cdn.origene.com/chromatograms/mk6580\\_e06.zip](https://cdn.origene.com/chromatograms/mk6580_e06.zip)

**Restriction Sites:** SgfI-MluI

**Cloning Scheme:**

Cloning sites used for ORF Shuttling:



\* The last codon before the Stop codon of the ORF

**ACCN:** NM\_014506

**ORF Size:** 1008 bp

**OTI Disclaimer:** The molecular sequence of this clone aligns with the gene accession number as a point of reference only. However, individual transcript sequences of the same gene can differ through naturally occurring variations (e.g. polymorphisms), each with its own valid existence. This clone is substantially in agreement with the reference, but a complete review of all prevailing variants is recommended prior to use. [More info](#)

**OTI Annotation:** This clone was engineered to express the complete ORF with an expression tag. Expression varies depending on the nature of the gene.

**Components:** The ORF clone is ion-exchange column purified and shipped in a 2D barcoded Matrix tube containing 10ug of transfection-ready, dried plasmid DNA (reconstitute with 100 ul of water).

**Reconstitution Method:**

1. Centrifuge at 5,000xg for 5min.
2. Carefully open the tube and add 100ul of sterile water to dissolve the DNA.
3. Close the tube and incubate for 10 minutes at room temperature.
4. Briefly vortex the tube and then do a quick spin (less than 5000xg) to concentrate the liquid at the bottom.
5. Store the suspended plasmid at -20°C. The DNA is stable for at least one year from date of shipping when stored at -20°C.

**RefSeq:** [NM\\_014506.3](#)

**RefSeq Size:** 2774 bp

**RefSeq ORF:** 1011 bp

**Locus ID:** 27348

**UniProt ID:** [O14657](#)

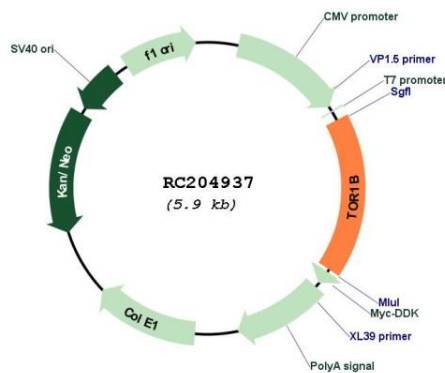
**Cytogenetics:** 9q34.11

**Protein Families:** Transmembrane

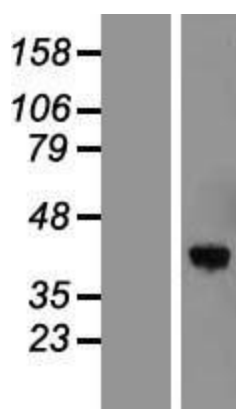
**MW:** 38 kDa

**Gene Summary:** The protein encoded by this gene is an ATPase found primarily in the endoplasmic reticulum and nuclear envelope. This gene has a highly-similar neighboring gene, TOR1A, that encodes a protein that is likely to interact in a complex with this protein. Finally, this protein may act as a chaperone and play a role in maintaining the integrity of the nuclear envelope and endoplasmic reticulum. Several transcript variants, some protein-coding and others non-protein coding, have been found for this gene. [provided by RefSeq, Dec 2015]

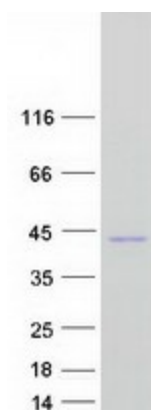
### Product images:



Circular map for RC204937



Western blot validation of overexpression lysate (Cat# [LY415210]) using anti-DDK antibody (Cat# [TA50011-100]). Left: Cell lysates from untransfected HEK293T cells; Right: Cell lysates from HEK293T cells transfected with RC204937 using transfection reagent MegaTran 2.0 (Cat# [TT210002]).



Coomassie blue staining of purified TOR1B protein (Cat# [TP304937]). The protein was produced from HEK293T cells transfected with TOR1B cDNA clone (Cat# RC204937) using MegaTran 2.0 (Cat# [TT210002]).