

Product datasheet for **RC204928**

IL13 receptor alpha 1 (IL13RA1) (NM_001560) Human Tagged ORF Clone

Product data:

Product Type:	Expression Plasmids
Product Name:	IL13 receptor alpha 1 (IL13RA1) (NM_001560) Human Tagged ORF Clone
Tag:	Myc-DDK
Symbol:	IL13 receptor alpha 1
Synonyms:	CD213A1; CT19; IL-13Ra; NR4
Mammalian Cell Selection:	Neomycin
Vector:	pCMV6-Entry (PS100001)
E. coli Selection:	Kanamycin (25 ug/mL)



[View online »](#)

ORF Nucleotide Sequence:

>RC204928 ORF sequence
 Red=Cloning site Blue=ORF Green=Tags(s)

TTTTGTAATACGACTCACTATAGGGCGGCCGGGAATTCGTCGACTGGATCCGGTACCGAGGAGATCTGCC
 GCC**GCGATCGCC**

ATGGAGTGTCCGGCGCGCTCTGCGGGCTGTGGCGCTGTGCTCTGCGCCGGCGCGGGGGCGGGGGCG
 GGGCGCCGCGCCTACGAAACTCAGCCACCTGTGACAAATTTGAGTGTCTCTGTTGAAAACCTCTGCAC
 AGTAATATGGACATGGAATCCACCCGAGGAGCCAGCTCAAATTGTAGTCTATGGTATTTTAGTCATTTT
 GGCGACAAACAAGATAAGAAAATAGCTCCGAAACTCGTCGTTCAATAGAAGTACCCCTGAATGAGAGGA
 TTTGTCTGCAAGTGGGTCCCAGTGTAGACCAATGAGAGTGAGAAGCCTAGCATTTTGGTTGAAAAATG
 CATCTACCCCCAGAAGGTGATCCTGAGTCTGCTGTGACTGAGCTTCAATGCATTTGGCACAACCTGAGC
 TACATGAAGTGTCTTGGCTCCCTGGAAGGAATACCAGTCCCACACTAACTATACTCTCTACTATTGGC
 ACAGAAGCCTGGAAAAATTCATCAATGTGAAAACATCTTTAGAGAAGGCCAATACTTTGGTTGTCCTT
 TGATCTGACCAAAGTGAAGGATCCAGTTTTGAACAACACAGTGTCCAAATAATGGTCAAGGATAATGCA
 GGAAAAATTAACCATCCTTCAATATAGTGCCTTTAACTCCCGTGTGAAACCTGATCCTCCACATATTA
 AAAACCTCTCCTCCACAATGATGACCTATATGTGCAATGGGAGAATCCACAGAATTTTATTAGCAGATG
 CCTATTTTATGAAGTAGAAGTCAATAACAGCCAAACTGAGACACATAATGTTTTCTACGTCCAAGAGGCT
 AAATGTGAGAATCCAGAATTTGAGAGAAATGTGGAGAATACATCTTGTTCATGGTCCCTGGTGTCTTC
 CTGATACTTTGAACACAGTCAGAATAAGAGTCAAAACAAATAAGTTATGCTATGAGGATGACAACTCTG
 GAGTAATTGGAGCCAAGAAATGAGTATAGGTAAGAAGCGCAATCCACACTCTACATAACCATGTTACTC
 ATTGTTCCAGTCATCGTCGAGGTGCAATCATAGTACTCTGCTTACCTAAAAAGGCTCAAGATTATTA
 TATCCCTCCAATTCCTGATCCTGGCAAGATTTTTAAAGAAATGTTTGGAGACCAGAATGATGATACTCT
 GCACTGGAAGAAGTACGACATCTATGAGAAGCAAACCAAGGAGGAAACCGACTCTGTAGTCTGATAGAA
 AACCTGAAGAAAGCCTCTCAG

ACGCGTACGCGGCCGCTCGAGCAGAAACTCATCTCAGAAGAGGATCTGGCAGCAAATGATATCCTGGATT
 ACAAGGATGACGACGATAAGGTTTAA

Protein Sequence:

>RC204928 protein sequence
 Red=Cloning site Green=Tags(s)

MECPARLCGLWALLLCAGGGGGGGAAPTETQPPVTNLSVSVENLCTVIWTPPEGASSNCSLWYFSHF
 GDKQDKKIAPETRRSIEVPLNERICLQVGSQCSTNESEKPSILVEKCISPPEGDPESAVTELQCIWHNLS
 YMKCSWLPGRNTSPDTNYTLYYWHRSLKIHQCENIFREGQYFGCSFDLTKVKDSSFEQHSVQIMVKDNA
 GKIKPSFNIVPLTSRVKPDPPHIKNLSFHNDLTVQWENPQNFISRCLFYEVVNSQTEHNVFVYQEA
 KCENPEFERNVENTSCFMVPGVLPDTLNTVRIRVKNLKYEDDKLWSNWSQEMSIGKRNSTLYITMLL
 IVPVIVAGAIIVLLLYLKRKIIIFPPIPDPGKIFKEMFGDQNDTLHWKDYIYEKQTKETDSSVVLIE
 NLKKASQ

TRTRPLEQKLISEEDLAANDILDYKDDDDKV

Chromatograms:

https://cdn.origene.com/chromatograms/mk6175_d01.zip

Restriction Sites:

Sgfl-Mlul

Cloning Scheme:


ACCN: NM_001560

ORF Size: 1281 bp

OTI Disclaimer: The molecular sequence of this clone aligns with the gene accession number as a point of reference only. However, individual transcript sequences of the same gene can differ through naturally occurring variations (e.g. polymorphisms), each with its own valid existence. This clone is substantially in agreement with the reference, but a complete review of all prevailing variants is recommended prior to use. [More info](#)

OTI Annotation: This clone was engineered to express the complete ORF with an expression tag. Expression varies depending on the nature of the gene.

Components: The ORF clone is ion-exchange column purified and shipped in a 2D barcoded Matrix tube containing 10ug of transfection-ready, dried plasmid DNA (reconstitute with 100 ul of water).

Reconstitution Method:

1. Centrifuge at 5,000xg for 5min.
2. Carefully open the tube and add 100ul of sterile water to dissolve the DNA.
3. Close the tube and incubate for 10 minutes at room temperature.
4. Briefly vortex the tube and then do a quick spin (less than 5000xg) to concentrate the liquid at the bottom.
5. Store the suspended plasmid at -20°C. The DNA is stable for at least one year from date of shipping when stored at -20°C.

RefSeq: [NM_001560.3](#)

RefSeq Size: 4006 bp

RefSeq ORF: 1284 bp

Locus ID: 3597

UniProt ID: [P78552](#)

Cytogenetics: Xq24

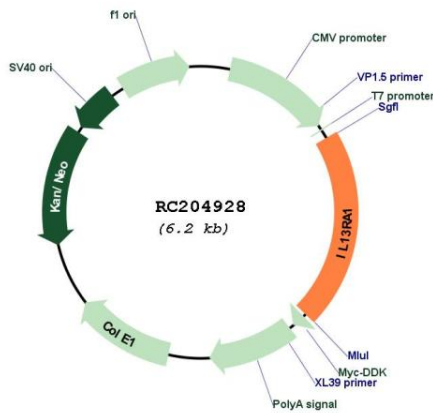
Protein Families: Druggable Genome, Transmembrane

Protein Pathways: Cytokine-cytokine receptor interaction, Jak-STAT signaling pathway

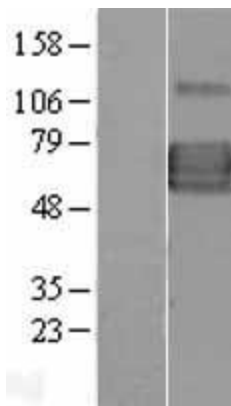
MW: 48.7 kDa

Gene Summary: The protein encoded by this gene is a subunit of the interleukin 13 receptor. This subunit forms a receptor complex with IL4 receptor alpha, a subunit shared by IL13 and IL4 receptors. This subunit serves as a primary IL13-binding subunit of the IL13 receptor, and may also be a component of IL4 receptors. This protein has been shown to bind tyrosine kinase TYK2, and thus may mediate the signaling processes that lead to the activation of JAK1, STAT3 and STAT6 induced by IL13 and IL4. [provided by RefSeq, Jul 2008]

Product images:



Circular map for RC204928



Western blot validation of overexpression lysate (Cat# [LY400598]) using anti-DDK antibody (Cat# [TA50011-100]). Left: Cell lysates from untransfected HEK293T cells; Right: Cell lysates from HEK293T cells transfected with RC204928 using transfection reagent MegaTran 2.0 (Cat# [TT210002]).