

## Product datasheet for **RC204920**

### ZBTB9 (NM\_152735) Human Tagged ORF Clone

#### Product data:

Product Type:	Expression Plasmids
Product Name:	ZBTB9 (NM_152735) Human Tagged ORF Clone
Tag:	Myc-DDK
Symbol:	ZBTB9
Synonyms:	ZNF919
Mammalian Cell Selection:	Neomycin
Vector:	pCMV6-Entry (PS100001)
E. coli Selection:	Kanamycin (25 ug/mL)



[View online »](#)

**ORF Nucleotide Sequence:**

>RC204920 ORF sequence  
 Red=Cloning site Blue=ORF Green=Tags(s)

TTTTGTAATACGACTCACTATAGGGCGGCCGGAATTCGTCGACTGGATCCGGTACCGAGGAGATCTGCC  
 GCC**CGGATCGCC**

ATGGAACCCCAACACCTTTGCCGCTGTACCCGCTCCCGACCTGCAACCCAGCCCCACGGACAATCC  
 AGATCGAGTTCCACAGCATAGCTCGTCGCTGCTGGAATCTCTGAACCGCCACAGGCTAGAGGAAAGTT  
 CTGTGATGTGCCCTCCTGGTGCAGGGCCGGAACCTTAGGGCTCATAAAGCAGTGTAGCTGCTGCCTCT  
 CCTACTTCCATGACAAGCTGCTTCTGGGGGATGCGCCTCGTCTCACTCTACCGAGTGTATTGAAGCCG  
 ATGCCCTCGAGGGGCTGCTCCAGCTCATTTATTAGGGCGTCTCCGCTGCCACTGGATGCTTCTCTGC  
 TCATCTCCTTGTGGCCAGTGGCCTTCAAATGTGGCAGGTAGTAGATCAGTGCTCAGAAATCTTAGAGAA  
 TTAGAACTTCAGGTGGTGAATTTAGCCCGTGGAGGAACTCTACCATGCCCTTCTTCCACTACAT  
 CCTCTACAGGAGGCTGGTGCATTGCTCTTCGCTTTCCAGACCCAGTACAGTCTCTGCTTCTACTGA  
 AAGCCCTGCTTCCACTGAGAGCCCTGTGGGAGGGGAGGGAAGTGAAGTGGGAGAAGTGTGCAAATTCAG  
 GTGGAAGAAGAAGAGGAGGAGGAGGAAGATGATGATGATGAGGACCAGGGGTGAGCCACACTCTCTCAGA  
 CTCTCAGCCCCAGAGAGTATCAGGGGTTTTTCCCGTCTCATGGACCCACCCACTGCCCATGACTGC  
 TACTCCCCGAAAGCTTCCAGAGGGTGAAGTGCACCCTTGAAGTCTCTGCCCTCTGCACTGCCCC  
 AAAATCTTCTACATTAAGCAGGAACCTTCGAGCCTAAGGAGGAGATATCAGGAAGCGGAACTCAGCCTG  
 GAGGAGCAAAGGAGGAAACCAAGTGTTCCTGGAGGGGACACTGAAGGGAATGGGGAGCTAGGGTTCTT  
 GTTGCCTCAGGGCCAGGGCCAACATCTGGGGGAGGGGTCCATCTGAAACCAGTGGATCTTCATGGG  
 AATGAAATCCTGTGAGGGGTGGAGACCTGGGGGAGCAGGCCAGGCCGTGCATGGCCTGTGAAGTCA  
 GGGGACACCCCTGCAGATGGAACGCTTTGGTTGCCTGTGTGGGAAGCGGTTGAGTGAAGCCAAA  
 GGGTGACCGGCACATCATGCTGACCTTCAGCCTTCGCGCTTTGGCTGTGGCATCTGCAACAAGCGCTTC  
 AAGCTGAAGCACCATCTGACAGACACATGAAGACCCATGCTGGAGCCCTGCATGCTTCTCCCACTGTG  
 GCCGTCGGTTCAGTCCATGCCTGTTTTCTCCGCCACCGGGACCTATGCAAGGGCCAGGGCTGGCCAC  
 TGCCCACTGGACTTACAAG

**ACGGTACGCGGCCGCTCGAGCAGAACTCATCTCAGAAGAGGATCTGGCAGCAAATGATATCTGGATT**  
**ACAAGGATGACGACGATAAGGTTTAA**

**Protein Sequence:**

>RC204920 protein sequence  
 Red=Cloning site Green=Tags(s)

METPTPLPPVPASPTCNPAPRTIQIEFPQHSSLLESLNRHRLEGKFCVSLLVQGRELRAHKAVLAAS  
 PYFHDKLLLDAPRLTLPVIEADAFEGLLQLIYSGRLRLPLDALPAHLLVASGLQMWQVVDQCSEILRE  
 LETSGGGISARGGNSYHALLSTTSSTGGWCIRSSPFQTPVQSSASTESPASTESPVGGEGSELGEVLQIQ  
 VEEEEEEEDDDDEDQGSATLSQTPQQRVSGVFRPHGPHPLPMTATPRKLPEGESAPLELPAPPALPP  
 KIFYIKQEPFEPKEEISGSGTQPGGAKEETKVFSGDTEGNGELGFLPSGPGPTSGGGGPSWKPVDLHG  
 NEILSGGGPGGAGQAVHGPVKLGGTPPADGKRFGLCGKRFVAVKPKRDRHIMLTFSLRPFGCGICNKR  
 KLKHHL TEHMKTHAGALHACPHCGRRFRVHACFLRHRDLCKGQGWATAHWYK

**TRTRPLEQKLI SEEDLAANDILDYKDDDDKV**

**Chromatograms:**

[https://cdn.origene.com/chromatograms/mk6574\\_e01.zip](https://cdn.origene.com/chromatograms/mk6574_e01.zip)

**Restriction Sites:**

Sgfl-Mlul

**Cloning Scheme:**

Cloning sites used for ORF Shutting:



\* The last codon before the Stop codon of the ORF

**ACCN:** NM\_152735

**ORF Size:** 1419 bp

**OTI Disclaimer:** The molecular sequence of this clone aligns with the gene accession number as a point of reference only. However, individual transcript sequences of the same gene can differ through naturally occurring variations (e.g. polymorphisms), each with its own valid existence. This clone is substantially in agreement with the reference, but a complete review of all prevailing variants is recommended prior to use. [More info](#)
**OTI Annotation:** This clone was engineered to express the complete ORF with an expression tag. Expression varies depending on the nature of the gene.

**Components:** The ORF clone is ion-exchange column purified and shipped in a 2D barcoded Matrix tube containing 10ug of transfection-ready, dried plasmid DNA (reconstitute with 100 ul of water).

**Reconstitution Method:**

1. Centrifuge at 5,000xg for 5min.
2. Carefully open the tube and add 100ul of sterile water to dissolve the DNA.
3. Close the tube and incubate for 10 minutes at room temperature.
4. Briefly vortex the tube and then do a quick spin (less than 5000xg) to concentrate the liquid at the bottom.
5. Store the suspended plasmid at -20°C. The DNA is stable for at least one year from date of shipping when stored at -20°C.

**RefSeq:** [NM\\_152735.2](#)
**RefSeq Size:** 2730 bp

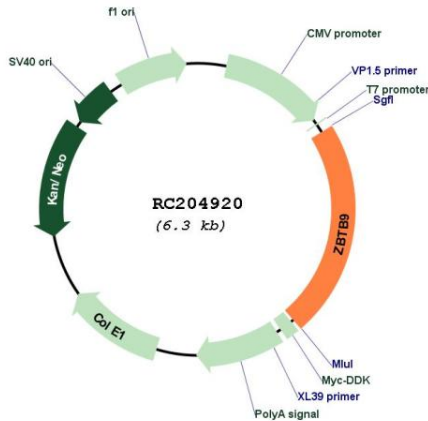
**RefSeq ORF:** 1422 bp

**Locus ID:** 221504

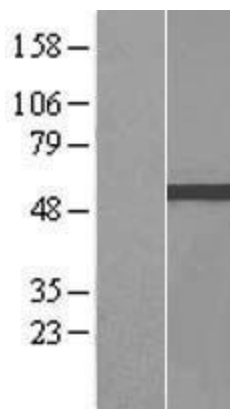
**UniProt ID:** [Q96C00](#)
**Cytogenetics:** 6p21.32

**Domains:** BTB, zf-C2H2  
**Protein Families:** Transcription Factors  
**MW:** 50.6 kDa  
**Gene Summary:** May be involved in transcriptional regulation.[UniProtKB/Swiss-Prot Function]

**Product images:**



Circular map for RC204920



Western blot validation of overexpression lysate (Cat# [LY407333]) using anti-DDK antibody (Cat# [TA50011-100]). Left: Cell lysates from untransfected HEK293T cells; Right: Cell lysates from HEK293T cells transfected with RC204920 using transfection reagent MegaTran 2.0 (Cat# [TT210002]).