

## Product datasheet for **RC204918**

### LGALS3BP (NM\_005567) Human Tagged ORF Clone

#### Product data:

Product Type:	Expression Plasmids
Product Name:	LGALS3BP (NM_005567) Human Tagged ORF Clone
Tag:	Myc-DDK
Symbol:	LGALS3BP
Synonyms:	90K; BTBD17B; CyCAP; gp90; M2BP; MAC-2-BP; TANGO10B
Mammalian Cell Selection:	Neomycin
Vector:	pCMV6-Entry (PS100001)
E. coli Selection:	Kanamycin (25 ug/mL)



[View online »](#)

**ORF Nucleotide Sequence:**

>RC204918 ORF sequence  
 Red=Cloning site Blue=ORF Green=Tags(s)

TTTTGTAATACGACTCACTATAGGGCGGCCGGAATTCGTCGACTGGATCCGGTACCGAGGAGATCTGCC  
 GCC**CGGATCGCC**

ATGACCCCTCGAGGCTCTTCTGGGTGTGGCTGCTGGTTGCAGGAACCCAAGCGTGAACGATGGTGACA  
 TCGCGCTGGCCGATGGGGCGCCACCAACCAGGGCCGCTGGAGATCTTCTACAGAGGCCAGTGGGGCAC  
 TGTGTGTGACAACCTGTGGGACCTGACTGATGCCAGCGTCGCTGCCGGGCCCTGGGCTTCGAGAACGCC  
 ACCCAGGCTCTGGGCAGAGCTGCCTTCGGGCAAGGATCAGGCCCATCATGCTGGACGAGGTCCAGTGCA  
 CGGGAACCGAGGCCTCACTGGCCGACTGCAAGTCCCTGGGCTGGTGAAGAGCAACTGCAGGCACGAGAG  
 AGACGCTGGTGTGGTCTGCACCAATGAAACCAGGAGCACCCACACCCTGGACCTCCTCAGGGAGCTCTCG  
 GAGGCCCTTGGCCAGATCTTGGACGCCAGCGGGCTGCGACCTGTCCATCAGCGTGAATGTGCAGGGCG  
 AGGACGCCCTGGGCTTCTGTGGCCACACGGTCACTGACTGCCAACCTGGAGGCCAGGCCCTGTGGAA  
 GGAGCCGGGCAGCAATGTACCATGAGTGTGGATGCTGAGTGTGTGCCATGGTCAAGGACCTTCTCAGG  
 TACTTCTACTCCGAAGGATTGACATCACCTGTGCTCAGTCAAGTGCTCCACAAGCTGGCCTCTGCCT  
 ATGGGGCCAGGACGCTGCAGGGCTACTGCGCAAGCCTCTTGGCCATCCTCCTCCCCAGGACCCCTCGTT  
 CCAGATGCCCCTGGACCTGTATGCCTATGCAGTGGCCACAGGGGACGCCCTGCTGGAGAAGCTCTGCCTA  
 CAGTTCCTGGCCTGGAACCTCGAGGCCTGACGCAGGCCGAGGCCCTGGCCAGTGTCCCCACAGACCTGC  
 TCCAACCTGCTGCTGCCAGGAGCGACCTGGCGGTGCCAGCGAGCTGGCCCTACTGAAGGCCGTGGACAC  
 CTGGAGCTGGGGGAGCGTGCCTCCCATGAGGAGTGGAGGGCTTGGTGGAGAAGATCCGCTTCCCCATG  
 ATGCTCCCTGAGGAGCTCTTGGAGCTGCAGTTCAACCTGTCCCTGACTGGAGCCACGAGGCCCTGTCC  
 AGAAGAAGACTCTGCAGGCCCTGGAATCCACACTGTGCCCTCCAGTTGCTGGCCCGGTACAAAGCCT  
 GAACCTCACCGAGGATACCTACAAGCCCGGATTTACACCTCGCCACCTGGAGTGCCTTGTGACAGAC  
 AGTTCTGGAGTGCACGGAAGTCAACTGGTCTATCAGTCCAGACGGGGCCTTGGTCAATATTCTT  
 CTGATTACTTCCAAGCCCTCTGACTACAGATACTACCCTACCAGTCTTCCAGACTCCACAACACCC  
 CAGCTTCTCTCCAGGACAAGAGGGTGTCTGGTCCCTGGTCTACCTCCCCACCATCCAGAGCTGCTGG  
 AACTACGGCTTCTCTGCTCCTCGGACGAGCTCCCTGTCTGGGCTCACCAAGTCTGGCGGCTCAGATC  
 GCACCATGCTACGAAAACAAGCCCTGATGCTCTGCGAAGGGCTTCTCGTGGCAGACGTCACCGATTT  
 CGAGGGCTGGAAGGCTGCGATTTCCAGTGCCTGGACACCAACAGCTCGAAGAGCACCTCCTCCTCCCC  
 TGCCCGCAGGGCACTTCAACGGCTTCCGCACGGTCACTCCGCCCTTCTACCTGACCAACTCCTCAGGTG  
 TGAC

**ACGCGT**ACGCGGCCGCTCGAGCAGAAACTCATCTCAGAAGAGGATCTGGCAGCAAATGATATCCTGGATT  
 ACAAGGATGACGACGATAAGGTTTAA

**Protein Sequence:**

>RC204918 protein sequence  
 Red=Cloning site Green=Tags(s)

MTPPRLFVWLLVAGTQGVNDGDMRLADGGATNQGRVEIFYRQWGTVCDNLWLDTASVVCRALGFENA  
 TQALGRAAFQGSGPIMLDEVQCTGTEASLADCKSLGWLKSNCRHERDAGVVCTNETRSTHTLDSLRELS  
 EALGQIFDSQRGCDLSISVNVQGEDALGFCGHTVILTANLEAQUALWKEPGSNVTMSVDAECVPMVRDLR  
 YFYSRRIDITLSSVKCFHKLASAYGARQLQGYCASLFAILLPQDPSFQMPLDLYAYAVATGDALLEKLC  
 QFLAWNFEALQAEAWPSVPTDLLQLLLPRSDLAVPSELALLKAVDTWSWGERASHEEVEGLVEKIRFPM  
 MLPEELFELQFNLSLYSHEALFQKKTLLQALEFHTVPFQLLARYKGLNLTEDTYKPRIYTSPTWSAFVTD  
 SWSARKSQLVYQSRGPLVKYSSDYFQAPSDYRYPYQSFQTPQHPSFLFQDKRVSWSLVYLPITQSCW  
 NYGFSCSSDEL PVLGLTKSGGSDRTIAYENKALMLCEGLFVADVTFEGWKAaipSALDtnSSKSTSSFP  
 CPAGHFNFRVIRPFYLTNSSGVD

**TR**TRPLEQKLISEEDLAANDILDYKDDDDKV

**Restriction Sites:**

Sgfl-MluI

**Cloning Scheme:**


**ACCN:** NM\_005567

**ORF Size:** 1755 bp

**OTI Disclaimer:** Due to the inherent nature of this plasmid, standard methods to replicate additional amounts of DNA in E. coli are highly likely to result in mutations and/or rearrangements. Therefore, OriGene does not guarantee the capability to replicate this plasmid DNA. Additional amounts of DNA can be purchased from OriGene with batch-specific, full-sequence verification at a reduced cost. Please contact our customer care team at [custsupport@origene.com](mailto:custsupport@origene.com) or by calling 301.340.3188 option 3 for pricing and delivery.

The molecular sequence of this clone aligns with the gene accession number as a point of reference only. However, individual transcript sequences of the same gene can differ through naturally occurring variations (e.g. polymorphisms), each with its own valid existence. This clone is substantially in agreement with the reference, but a complete review of all prevailing variants is recommended prior to use. [More info](#)

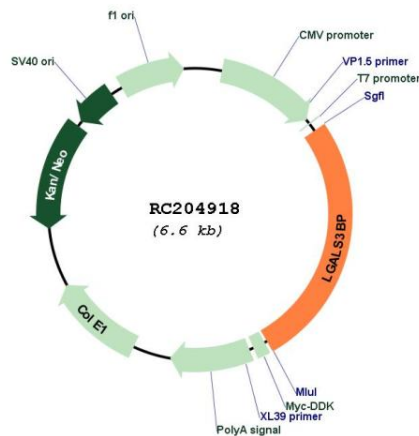
**OTI Annotation:** This clone was engineered to express the complete ORF with an expression tag. Expression varies depending on the nature of the gene.

**Components:** The ORF clone is ion-exchange column purified and shipped in a 2D barcoded Matrix tube containing 10ug of transfection-ready, dried plasmid DNA (reconstitute with 100 ul of water).

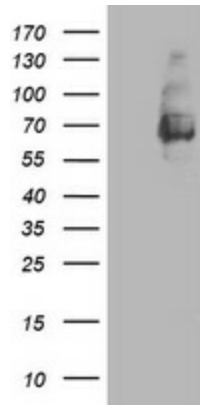
- Reconstitution Method:**
1. Centrifuge at 5,000xg for 5min.
  2. Carefully open the tube and add 100ul of sterile water to dissolve the DNA.
  3. Close the tube and incubate for 10 minutes at room temperature.
  4. Briefly vortex the tube and then do a quick spin (less than 5000xg) to concentrate the liquid at the bottom.
  5. Store the suspended plasmid at -20°C. The DNA is stable for at least one year from date of shipping when stored at -20°C.

<b>Note:</b>	Plasmids are not sterile. For experiments where strict sterility is required, filtration with 0.22um filter is required.
<b>RefSeq:</b>	<a href="#">NM_005567.2</a> , <a href="#">NP_005558.1</a>
<b>RefSeq Size:</b>	2277 bp
<b>RefSeq ORF:</b>	1758 bp
<b>Locus ID:</b>	3959
<b>UniProt ID:</b>	<a href="#">Q08380</a>
<b>Cytogenetics:</b>	17q25.3
<b>Domains:</b>	SR
<b>Protein Families:</b>	Druggable Genome, Secreted Protein
<b>MW:</b>	65.3 kDa
<b>Gene Summary:</b>	The galectins are a family of beta-galactoside-binding proteins implicated in modulating cell-cell and cell-matrix interactions. LGALS3BP has been found elevated in the serum of patients with cancer and in those infected by the human immunodeficiency virus (HIV). It appears to be implicated in immune response associated with natural killer (NK) and lymphokine-activated killer (LAK) cell cytotoxicity. Using fluorescence in situ hybridization the full length 90K cDNA has been localized to chromosome 17q25. The native protein binds specifically to a human macrophage-associated lectin known as Mac-2 and also binds galectin 1. [provided by RefSeq, Jul 2008]

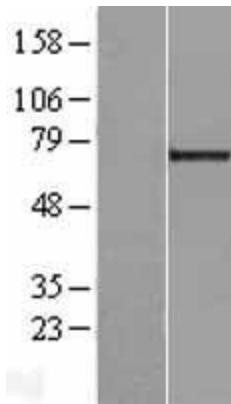
### Product images:



Circular map for RC204918



HEK293T cells were transfected with the pCMV6-ENTRY control (Cat# [PS100001], Left lane) or pCMV6-ENTRY LGALS3BP (Cat# RC204918, Right lane) cDNA for 48 hrs and lysed. Equivalent amounts of cell lysates (5 ug per lane) were separated by SDS-PAGE and immunoblotted with anti-LGALS3BP(Cat# [TA503455]). Positive lysates [LY417206] (100ug) and [LC417206] (20ug) can be purchased separately from OriGene.



Western blot validation of overexpression lysate (Cat# [LY417206]) using anti-DDK antibody (Cat# [TA50011-100]). Left: Cell lysates from untransfected HEK293T cells; Right: Cell lysates from HEK293T cells transfected with RC204918 using transfection reagent MegaTran 2.0 (Cat# [TT210002]).