

Product datasheet for **RC204916L2V**

ESRP2 (NM_024939) Human Tagged ORF Clone Lentiviral Particle

Product data:

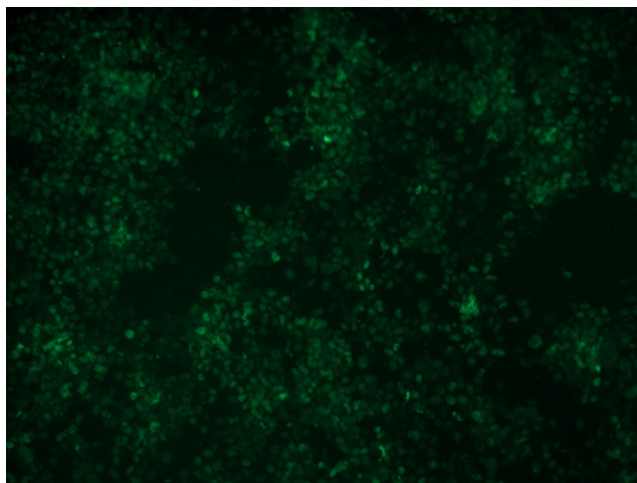
Product Type:	Lentiviral Particles
Product Name:	ESRP2 (NM_024939) Human Tagged ORF Clone Lentiviral Particle
Symbol:	ESRP2
Synonyms:	RBM35B
Mammalian Cell Selection:	None
Vector:	pLenti-C-mGFP (PS100071)
Tag:	mGFP
ACCN:	NM_024939
ORF Size:	2151 bp
ORF Nucleotide Sequence:	The ORF insert of this clone is exactly the same as(RC204916).
OTI Disclaimer:	The molecular sequence of this clone aligns with the gene accession number as a point of reference only. However, individual transcript sequences of the same gene can differ through naturally occurring variations (e.g. polymorphisms), each with its own valid existence. This clone is substantially in agreement with the reference, but a complete review of all prevailing variants is recommended prior to use. More info
OTI Annotation:	This clone was engineered to express the complete ORF with an expression tag. Expression varies depending on the nature of the gene.
RefSeq:	NM_024939.2
RefSeq Size:	4021 bp
RefSeq ORF:	2154 bp
Locus ID:	80004
UniProt ID:	Q9H6T0
Cytogenetics:	16q22.1
MW:	77.4 kDa



[View online »](#)

Gene Summary: ESRP2 is an epithelial cell-type-specific splicing regulator (Warzecha et al., 2009 [PubMed 19285943]).[supplied by OMIM, Aug 2009]

Product images:



[RC204916L2] was used to prepare Lentiviral particles using [TR30037] packaging kit. HEK293T cells were transduced with RC204916L2V particle to overexpress human ESRP2-mGFP fusion protein.