

Product datasheet for **RC204916**

ESRP2 (NM_024939) Human Tagged ORF Clone

Product data:

Product Type:	Expression Plasmids
Product Name:	ESRP2 (NM_024939) Human Tagged ORF Clone
Tag:	Myc-DDK
Symbol:	ESRP2
Synonyms:	RBM35B
Mammalian Cell Selection:	Neomycin
Vector:	pCMV6-Entry (PS100001)
E. coli Selection:	Kanamycin (25 ug/mL)



[View online »](#)

**ORF Nucleotide
Sequence:**

>RC204916 ORF sequence
 Red=Cloning site Blue=ORF Green=Tags(s)

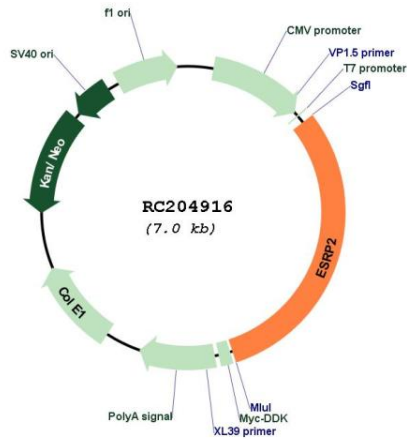
TTTTGTAATACGACTCACTATAGGGCGGCCGGGAATTCGTCGACTGGATCCGGTACCGAGGAGATCTGCC
 GCC**GCGATCGCC**

ATGACTCCGCCGCCGCCGCCGCCCTCCCGGGCCCTGACCCCGCGGCCGACCCCGCGGACCCTGCCGCCGACCCT
 GCCCTGGCCCGGATCACTGGTCGTCTCTTCGGGGCTACGGCGGGTGGCTGGGACGGGACCTGGGCTC
 GGACGAGACCGACTTAATCCTCCTAGTTTGGCAAGTGGTTGAGCCGCGGAGCCGCCAGGTGGGGACGCTG
 CACAAATCGTGGTTCGTGCCGAGGCGGCCGACTGAGTACGAGTGGCGGAGGCGAGCGGCTGAGCG
 CCGACAGCCTGGCGGGGAGAGCCGCTGGACAAGGTGCTGCAGCAGTTCTCACAGCTGGTGAACGGGGA
 TGTGGCTTTGCTGGGCGGGGCCCTACATGCTCTGACTGATGGGCAGCAGCTATTGCGACAGGTCCTG
 CACCCCGAGGCCCTCCAGGAAGAACCTGGTGTCCCGACATGTTCTTCTCCTTCTATGACCTCCGAAGAG
 AATTCCATATGCAGCATCAAGCACCTGCCCTGCCAGGGACCTCACTGTGGCCACCATGGCACAGGGTTT
 AGGACTGGAGACAGATGCCACAGAGGATGACTTTGGGGTCTGGGAAGTCAAGACAATGGTAGCTGTTATC
 CTCCATCTACTCAAAGAGCCAGCAGTCAATTGTTTTCGAAGCCCGAGGTGATAAAGCAGAAATACGAGA
 CGGGGCCCTTGAGCAAGGCTGATGTGGTGGACAGTGGACTGTGGTACGGGCTCGTGGGTTGCCGTGGCA
 GTCATCAGACCAGGACGTGGCTCGTCTTCAAAGGGCTCAACGTGGCCAGGGGTGGTGTAGCACTCTGC
 CTCAACGCCAGGGCCGAGAAATGGCGAGGCCCTCATCCGCTTGTGGACAGCGAGCAGCGGGACCTAG
 CGCTGCAGAGACACAAGCACCACATGGGCGTCCGCTATATTGAGGTGTATAAAGCGACAGGGGAGGAGTT
 TGTAAGATTGCAGGGGGCACATCACTAGAGGTGGCTCGTTTCTGTACGGGAAGACCAAGTGATCCTG
 CGGCTGCGGGGACTGCCCTTCTCGGCTGGGCCAACGGACGTGCTTGGCTTCTGGGGCCAGAGTCCCGAG
 TGACTGGGGTACCGAGGGGCTGCTTGTGCGCCATCCTGATGGCCGCGGACTGGTGTGCTTCCG
 CCTCTTTGCTTGTGAGGAGCTGGCACAGGCTGCACTGCGCAGGCACAAGGGCATGCTGGGTAAAGCGATAC
 ATTGAACCTTCCGAGCACTGCAGCCGAAGTGCAGCAGGTCTTGAACCGCTATGCATCCGGCCACTCC
 TTCTACTACTGACTGCCCACTGCTGCCATCCCTTCCCACTGGCACCTGGGACTGGGAGGGACTGTGT
 ACGCCTCCGAGGCCTGCCCTACACGGCCACCATTGAAGACATCCTGAGCTTCTGGGGGAGGCAGCAGCT
 GACATTCGGCCCCACGGTGTACACATGGTGTCAACCAGCAGGGCCGGCCATCGGGCGATGCCTTCATTC
 AGATGACATCAGCAGAGCGAGCCCTAGCTGCTGCTCAGCGTTGCCATAAGAAGGTGATGAAGGAGCGCTA
 CGTGGAGGTGGTCCCCTGTTCCACAGAGGAGATGAGCCGAGTGTGATGGGGGACCTTGGGCCGAGT
 GGCATGTCCCCTCCACCCTGCAAGCTGCCCTGCCTCTCACCACCTACCTACACCACCTTCAAGCCACCC
 CAACGCTCATTCCACGGAGACGGCAGCTATACCCCTTTCAGCACTGCTCCCAGCTGCCAGGGTGGC
 TGCTGCCCCACCCCTGTTGCCTACTATCCAGGGCCAGCCACTCAACTCTACCTGAACTACACAGCCTAC
 TACCAAGCCCCCAGTCTCCCCACCCTGTGGGCTACCTCACTACACCACCTGCTGCCCTGGCCTCTG
 CTCCCACCTCAGTGTGTCCCAGTCAAGGAGCCTTGGTCCGCATGCAGGGTGTCCCATACACGGCTGGTAT
 GAAGGATCTGCTCAGCGTCTCCAGGCCTACCAGCTACCCGCTGATGACTACACCAGTCTGATGCCTGTT
 GGTGACCCACCTCGCACTGTGTTACAAGCCCCAAGGAATGGGTGTGTTG

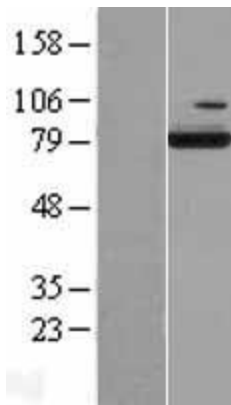
ACGCGTACGCGGCCGCTCGAGCAGAACTCATCTCAGAAGAGGATCTGGCAGCAAATGATATCCTGGATT
 ACAAGGATGACGACGATAAGGTTTAA

OTI Disclaimer:	<p>Due to the inherent nature of this plasmid, standard methods to replicate additional amounts of DNA in E. coli are highly likely to result in mutations and/or rearrangements. Therefore, OriGene does not guarantee the capability to replicate this plasmid DNA. Additional amounts of DNA can be purchased from OriGene with batch-specific, full-sequence verification at a reduced cost. Please contact our customer care team at custsupport@origene.com or by calling 301.340.3188 option 3 for pricing and delivery.</p> <p>The molecular sequence of this clone aligns with the gene accession number as a point of reference only. However, individual transcript sequences of the same gene can differ through naturally occurring variations (e.g. polymorphisms), each with its own valid existence. This clone is substantially in agreement with the reference, but a complete review of all prevailing variants is recommended prior to use. More info</p>
OTI Annotation:	This clone was engineered to express the complete ORF with an expression tag. Expression varies depending on the nature of the gene.
Components:	The ORF clone is ion-exchange column purified and shipped in a 2D barcoded Matrix tube containing 10ug of transfection-ready, dried plasmid DNA (reconstitute with 100 ul of water).
Reconstitution Method:	<ol style="list-style-type: none"> 1. Centrifuge at 5,000xg for 5min. 2. Carefully open the tube and add 100ul of sterile water to dissolve the DNA. 3. Close the tube and incubate for 10 minutes at room temperature. 4. Briefly vortex the tube and then do a quick spin (less than 5000xg) to concentrate the liquid at the bottom. 5. Store the suspended plasmid at -20°C. The DNA is stable for at least one year from date of shipping when stored at -20°C.
RefSeq:	NM_024939.3
RefSeq Size:	4021 bp
RefSeq ORF:	2154 bp
Locus ID:	80004
UniProt ID:	Q9H6T0
Cytogenetics:	16q22.1
MW:	77.4 kDa
Gene Summary:	ESRP2 is an epithelial cell-type-specific splicing regulator (Warzecha et al., 2009 [PubMed 19285943]).[supplied by OMIM, Aug 2009]

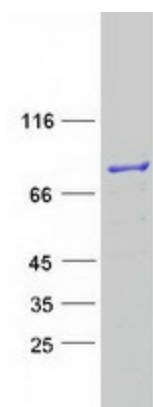
Product images:



Circular map for RC204916



Western blot validation of overexpression lysate (Cat# [LY410971]) using anti-DDK antibody (Cat# [TA50011-100]). Left: Cell lysates from untransfected HEK293T cells; Right: Cell lysates from HEK293T cells transfected with RC204916 using transfection reagent MegaTran 2.0 (Cat# [TT210002]).



Coomassie blue staining of purified ESRP2 protein (Cat# [TP304916]). The protein was produced from HEK293T cells transfected with ESRP2 cDNA clone (Cat# RC204916) using MegaTran 2.0 (Cat# [TT210002]).