

Product datasheet for **RC204915**

USF1 (NM_007122) Human Tagged ORF Clone

Product data:

Product Type:	Expression Plasmids
Product Name:	USF1 (NM_007122) Human Tagged ORF Clone
Tag:	Myc-DDK
Symbol:	USF1
Synonyms:	bHLHb11; FCHL; FCHL1; HYPLIP1; MLTF; MLTFI; UEF
Vector:	pCMV6-Entry (PS100001)
E. coli Selection:	Kanamycin (25 ug/mL)
Cell Selection:	Neomycin
ORF Nucleotide Sequence:	>RC204915 ORF sequence Red=Cloning site Blue=ORF Green=Tags(s)

TTTTGTAATACGACTCACTATAGGGCGCCGGAATTCGTCGACTGGATCCGGTACCGAGGAGATCTGCC
GCC**CGGATCGCC**

ATGAAGGGGCAGCAGAAAACAGCTGAAACGGAAGAGGGGACAGTGCAGATTCAGGAAGGTGCAGTGGCTA
CTGGGGAAGACCAACCAGTGTGGCTATTGCCAGCATCCAGTCAGCTGCCACCTTCCTGACCCCAACGT
CAAGTACGTCTTCCGAAGTGAAGTGGGGCCAGGTGATGTACAGGGTATCCAGGTGTCTGAGGGGCAG
CTGGATGGCCAAACTGAGGGAAGTGGCGCCATCAGTGGCTACCCTGCCACTCAATCCATGACCCAGGCGG
TGATCCAGGGTGCTTTCCACAGTGTATGCAGTTGACACGGAGGGGACAGCTGCTGAGACGCACTATACT
TTACTTCCCAGCACGGCAGTGGGAGATGGGGCAGGGGTACCACATCGGGGAGTACAGCTGCTGTTGTT
ACTACCCAGGGCTCAGAGGCACTGCTGGGGCAGGGCAGCCCTCCTGGCACTGGTCAATTCTTTGTGATGA
TGTACCACAAGAAGTACTGCAGGGAGGAAGCCAGCGCTCAATTGCCCTAGGACTCACCTTATTTCCC
GAAGTCAGAAGTCCCCGGACGACTCGGGATGAGAAACGAGGGCTCAGCATAATGAAGTGGAGCGTCGC
CGCCGAGACAAGATCAACAAGTGGATCGTGCAGCTCTCCAAGATAATCCAGACTGCTCTATGGAGAGCA
CCAAGTCTGGCCAGAGTAAAGTGGGATTCTATCCAAGCTTGTGATTATATCCAGGAGCTTCGGCAGAG
TAACCACCGCTTGTCTGAAGAAGTGCAGGGACTTGACCAACTGCAGCTGGACAATGACGTGCTTCGACAA
CAGGTGGAAGATCTTAAAAACAAGAATCTGCTGCTTCGAGCTCAGTTGCCGACCACGGATTAGAGGTGCG
TCATCAAGAATGACAGCAAC

ACGCGTACGCGGCCGCTCGAGCAGAAACTCATCTCAGAAGAGGATCTGGCAGCAATGATATCCTGGATT
ACAAGGATGACGACGATAAGGTTTAA



[View online »](#)

Protein Sequence: >RC204915 protein sequence
 Red=Cloning site Green=Tags(s)

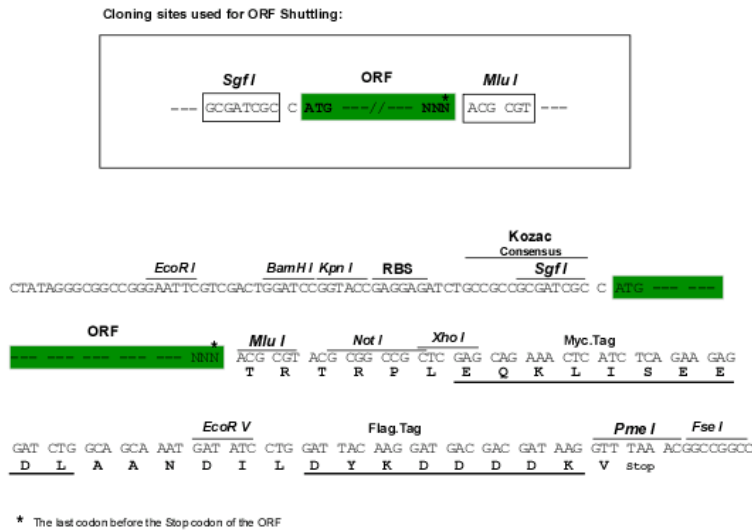
MKGQQKTAETEEGTVQIQEGAVATGEDPTSVAIASIQSAATFPDPNVKYVFRTEGGQVMYRVIQVSEGO
 LDGQTEGTGAISGYPATQSMQTQAVIQGAFSTDDAVDTEGTAETHYTFPSTAVGDGAGGTTSGSTA
 AVVTTQGEALLGQATPPGTGQFFVMSPQEVVLQGGSQRSIAPRTHPYSPKSEAPRTTRDEKRRAQHNE
 VERRRDKINNWIVQLSKIIPDCSMESTKSGQSKGGILSKACDYIQELRQSNHRLSEELQGLDQLQLDNDVLRQ
 QVEDLKNKNLLLRAQLRHHGLEVVIKNDSN

TRTRPLEQKLISEEDLAANDILDYKDDDDKV

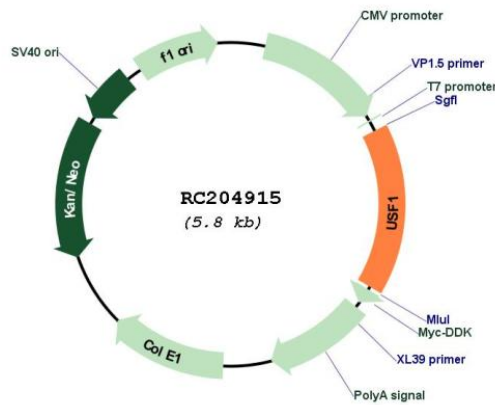
Chromatograms: https://cdn.origene.com/chromatograms/mk6065_e01.zip

Restriction Sites: SgfI-MluI

Cloning Scheme:



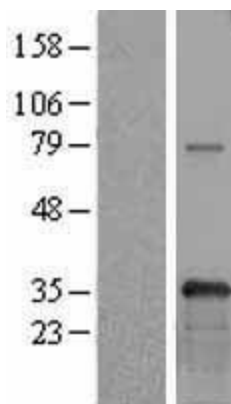
Plasmid Map:



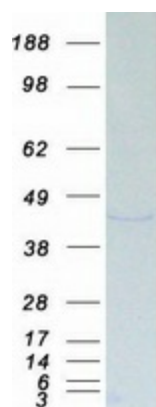
ACCN: NM_007122

ORF Size:	930 bp
OTI Disclaimer:	The molecular sequence of this clone aligns with the gene accession number as a point of reference only. However, individual transcript sequences of the same gene can differ through naturally occurring variations (e.g. polymorphisms), each with its own valid existence. This clone is substantially in agreement with the reference, but a complete review of all prevailing variants is recommended prior to use. More info
OTI Annotation:	This clone was engineered to express the complete ORF with an expression tag. Expression varies depending on the nature of the gene.
Components:	The ORF clone is ion-exchange column purified and shipped in a 2D barcoded Matrix tube containing 10ug of transfection-ready, dried plasmid DNA (reconstitute with 100 ul of water).
Reconstitution Method:	<ol style="list-style-type: none">1. Centrifuge at 5,000xg for 5min.2. Carefully open the tube and add 100ul of sterile water to dissolve the DNA.3. Close the tube and incubate for 10 minutes at room temperature.4. Briefly vortex the tube and then do a quick spin (less than 5000xg) to concentrate the liquid at the bottom.5. Store the suspended plasmid at -20°C. The DNA is stable for at least one year from date of shipping when stored at -20°C.
RefSeq:	NM_007122.5
RefSeq Size:	1830 bp
RefSeq ORF:	933 bp
Locus ID:	7391
UniProt ID:	P22415
Cytogenetics:	1q23.3
Protein Families:	Druggable Genome, Transcription Factors
MW:	33.5 kDa
Gene Summary:	This gene encodes a member of the basic helix-loop-helix leucine zipper family, and can function as a cellular transcription factor. The encoded protein can activate transcription through pyrimidine-rich initiator (Inr) elements and E-box motifs. This gene has been linked to familial combined hyperlipidemia (FCHL). Alternative splicing of this gene results in multiple transcript variants. A related pseudogene has been defined on chromosome 21. [provided by RefSeq, Feb 2013]

Product images:



Western blot validation of overexpression lysate (Cat# [LY416182]) using anti-DDK antibody (Cat# [TA50011-100]). Left: Cell lysates from untransfected HEK293T cells; Right: Cell lysates from HEK293T cells transfected with RC204915 using transfection reagent MegaTran 2.0 (Cat# [TT210002]).



Coomassie blue staining of purified USF1 protein (Cat# [TP304915]). The protein was produced from HEK293T cells transfected with USF1 cDNA clone (Cat# RC204915) using MegaTran 2.0 (Cat# [TT210002]).