

## Product datasheet for RC204911

### GKAP1 (NM\_025211) Human Tagged ORF Clone

#### Product data:

Product Type:	Expression Plasmids
Product Name:	GKAP1 (NM_025211) Human Tagged ORF Clone
Tag:	Myc-DDK
Symbol:	GKAP1
Synonyms:	FKSG21; GKAP42
Mammalian Cell Selection:	Neomycin
Vector:	pCMV6-Entry (PS100001)
E. coli Selection:	Kanamycin (25 ug/mL)
ORF Nucleotide Sequence:	>RC204911 ORF sequence Red=Cloning site Blue=ORF Green=Tags(s)

TTTTGTAATACGACTCACTATAGGGCGCCGGGAATTCGTCGACTGGATCCGGTACCGAGGAGATCTGCC  
GCC**CGATCGCC**

ATGGCCTCAGCAGTACTTAGTTCTGTTCCACCACCGCTTCTCGTTTTGCCCTGTTACAAGTGGATAGTG  
GCAGTGGCTCTGATTCTGAACCTGGAAAAGGTAAGGTCGAAATACTGGAAAGTCTCAAACCTTAGGAAG  
CAAGTCAACTACAAATGAGAAAAAAGAGAAAAAGAAGAAAAAGAAGAACAGCAACAGAGTGAAGCA  
AATGAGCTCAGGAATCTTGCTTTAAGAAAATCCCCAGAAATCCTCCCATGCTGTTTGAACGCTCAAC  
ATGATCTTCCATTGTCAAACCCAGTACAGAAGGATTCACGAGAAGAAAATTGGCAAGAGTGGAGACAAAG  
AGATGAGCAGCTGACATCTGAAATGTTTGAAGCAGATCTTGAGAAGGCATTGTTACTAAGTAAACTAGAA  
TATGAAGAGCACAAAAAGGAGTATGAAGATGCTGAAAATACTTCAACTCAGTCCAAAGTTATGAATAAAA  
AAGATAAAGAAAGAATCATCAGGGAAAAGACAGACCTCTCACAGTATCACTAAAAGATTTTCATTCCGGA  
AGATCACATTAGTAAAAAGACTGAGGAATTGAGTCTTCTCAGACTTTATCAGATGATGGAGGATTCTTC  
AATAGACTGGAAGATGATGTTTCATAAAATCTTATTAGAGAAAAACGAAGAGAACAGCTTACAGAATATA  
ATGGAACAGATAATTGTACAGCTCATGAACACAACCAGGAAGTGGTCTGAAAGATGGAAGAATTGAAAG  
ACTAAAGTTAGAGCTTGAAGGAAAGATGCTGAAATCCAGAAGCTGAAAAATGTAATCACTCAATGGGAG  
GCAAAGTATAAGGAAGTAAAGGCAAGAAATGCACAATTATTGAAAATGCTTCAGGAAGGTGAAATGAAAG  
ATAAGGCAGAAATACTTCTGCAAGTTGATGAATCACAAAGTATCAAGAATGAGCTCACTATTCAGGTGAC  
TTCACCTCATGCTGCATTAGAACAAGAAAGATCTAAAAGTAAAAGTATTACAAGCAGAGTTAGCCAATAC  
CAGGGTGGCAGAAAAGGGAAAAGAACTCTGAATCCGACCAAGTGTAGG

**ACGCGT**ACGCGGCCGCTCGAGCAGAAACTCATCTCAGAAGAGGATCTGGCAGCAAATGATATCCTGGATT  
ACAAGGATGACGACGATAAGGTTTAA



[View online »](#)

**Protein Sequence:** >RC204911 protein sequence  
Red=Cloning site Green=Tags(s)

MASAVLSSVPTTASRFALLQVDSGSGDSEPGKGRNTGKSQTLGSKSTTNEKKREKRRKKKEQQQSEA  
 NELRNLAFFKKIPQKSSHAVCNAQHDLPLSNPVQKDSREENWQEWQRDEQLTSEMFEADLEKALLSKLE  
 YEEHKKEYEDAENTSTQSKVMNKKDKRKNHQGKDRPLTVSLKDFHSEDHISKKTEELSSSQTLSHDGGFF  
 NRLEDDVHKILIREKRREQLTEYNGTDNCTAHEHNQEVVLKDGRIERLKLLELRKDAEIQKLNKIVITQWE  
 AKYKEVKARNAQLLKMQLQEGEMKDKAEILLQVDESQSIKNELTIQVTSLHAALQERSKVKVLQAEELAKY  
 QGGRKGRNSESQCR

TRTRPLEQKLISEEDLAANDILDYKDDDDKV

**Chromatograms:** [https://cdn.origene.com/chromatograms/mk6574\\_b12.zip](https://cdn.origene.com/chromatograms/mk6574_b12.zip)

**Restriction Sites:** SgfI-MluI

**Cloning Scheme:**



\* The last codon before the Stop codon of the ORF

**ACCN:** NM\_025211

**ORF Size:** 1098 bp

**OTI Disclaimer:** The molecular sequence of this clone aligns with the gene accession number as a point of reference only. However, individual transcript sequences of the same gene can differ through naturally occurring variations (e.g. polymorphisms), each with its own valid existence. This clone is substantially in agreement with the reference, but a complete review of all prevailing variants is recommended prior to use. [More info](#)

**OTI Annotation:** This clone was engineered to express the complete ORF with an expression tag. Expression varies depending on the nature of the gene.

**Components:** The ORF clone is ion-exchange column purified and shipped in a 2D barcoded Matrix tube containing 10ug of transfection-ready, dried plasmid DNA (reconstitute with 100 ul of water).

**Reconstitution Method:**

1. Centrifuge at 5,000xg for 5min.
2. Carefully open the tube and add 100ul of sterile water to dissolve the DNA.
3. Close the tube and incubate for 10 minutes at room temperature.
4. Briefly vortex the tube and then do a quick spin (less than 5000xg) to concentrate the liquid at the bottom.
5. Store the suspended plasmid at -20°C. The DNA is stable for at least one year from date of shipping when stored at -20°C.

**Note:** Plasmids are not sterile. For experiments where strict sterility is required, filtration with 0.22um filter is required.

**RefSeq:** [NM\\_025211.4](#)

**RefSeq Size:** 1891 bp

**RefSeq ORF:** 1101 bp

**Locus ID:** 80318

**UniProt ID:** [Q5VSY0](#)

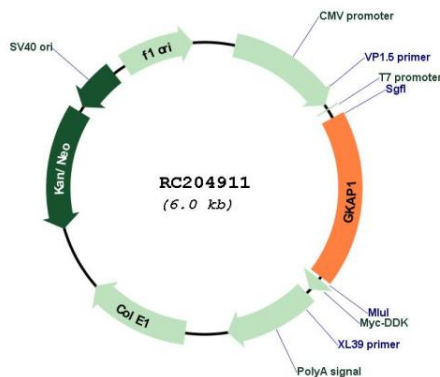
**Cytogenetics:** 9q21.32

**Protein Families:** Druggable Genome

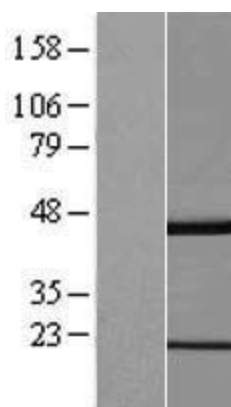
**MW:** 42.1 kDa

**Gene Summary:** This gene encodes a protein that is highly similar to the mouse cGMP-dependent protein kinase anchoring protein 42kDa. The mouse protein has been found to localize with the Golgi and recruit cGMP-dependent protein kinase I alpha to the Golgi in mouse testes. It is thought to play a role in germ cell development. Transcript variants encoding different isoforms have been found for this gene. [provided by RefSeq, Oct 2008]

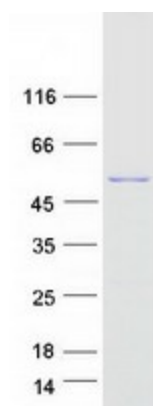
### Product images:



Circular map for RC204911



Western blot validation of overexpression lysate (Cat# [LY410835]) using anti-DDK antibody (Cat# [TA50011-100]). Left: Cell lysates from untransfected HEK293T cells; Right: Cell lysates from HEK293T cells transfected with RC204911 using transfection reagent MegaTran 2.0 (Cat# [TT210002]).



Coomassie blue staining of purified GKAP1 protein (Cat# [TP304911]). The protein was produced from HEK293T cells transfected with GKAP1 cDNA clone (Cat# RC204911) using MegaTran 2.0 (Cat# [TT210002]).