

Product datasheet for **RC204909**

IMMP1L (NM_144981) Human Tagged ORF Clone

Product data:

Product Type: Expression Plasmids
Product Name: IMMP1L (NM_144981) Human Tagged ORF Clone
Tag: Myc-DDK
Symbol: IMMP1L
Synonyms: IMMP1; IMP1; IMP1-LIKE
Mammalian Cell Selection: Neomycin
Vector: pCMV6-Entry (PS100001)
E. coli Selection: Kanamycin (25 ug/mL)
ORF Nucleotide Sequence: >RC204909 ORF sequence
Red=Cloning site Blue=ORF Green=Tags(s)

TTTTGTAATACGACTCACTATAGGGCGCCGGAATTCGTCGACTGGATCCGGTACCGAGGAGATCTGCC
GCC**CGATCGCC**

ATGCTTCGTGGTGTCTGGGAAAACCTTCGACTTGTGGCTATACTATTCAATATGGCTGTATAGCTC
ATTGTGCTTTGAATACGTTGGTGGTGTGTGCATGTGTTCTGGACCATCAATGGAGCCTACAATCAAAA
TTCAGATATTGTCTTTCAGAAAATCTTAGTCGACATTTTATGGTATCCAAAGAGGTGACATTGTGATT
GCAAAAAGCCCAAGTGATCCAAAATCAAATATTTGTAAGAGTAATTGGTTTGAAGGAGACAAAATCC
TCACCACTAGTCCATCAGATTTCTTTAAAAGCCATAGTTATGTGCAATGGGTCATGTTTGGTTAGAAGG
TGACAATCTACAGAATTCTACAGATTCAGGTGCTATGGACCTATCCATATGGACTAATAAGAGGACGA
ATCTTCTTTAAGATTTGGCCTCTGAGTGATTTTGGATTTTACGTGCCAGCCCTAATGGCCACAGATTTT
CTGATGAT

ACGCGTACGCGGCCGCTCGAGCAGAACTCATCTCAGAAGAGGATCTGGCAGCAAATGATATCCTGGATT
ACAAGGATGACGACGATAAGGTTTAA

Protein Sequence: >RC204909 protein sequence
Red=Cloning site Green=Tags(s)

MLRGVLGKTFRLVGYTIQYGCIAHCAFVYGGVVMCSGPSMEPTIQNSDIVFAENLSRHFYGIQRGDIVI
AKSPSPDKSNICKRVIGLEGDKILTTSPSDFFKSHSYVPMGHVWLEGDNLQNSTDSRCYGPPIPYGLIRGR
IFFKIWPLSDFGLRASPNGHRFSDD

TRTRPLEQKLISEEDLAANDILDYKDDDDKV

Chromatograms: https://cdn.origene.com/chromatograms/mk6427_f07.zip



[View online »](#)

Restriction Sites: SgfI-MluI

Cloning Scheme:



ACCN: NM_144981

ORF Size: 498 bp

OTI Disclaimer: The molecular sequence of this clone aligns with the gene accession number as a point of reference only. However, individual transcript sequences of the same gene can differ through naturally occurring variations (e.g. polymorphisms), each with its own valid existence. This clone is substantially in agreement with the reference, but a complete review of all prevailing variants is recommended prior to use. [More info](#)

OTI Annotation: This clone was engineered to express the complete ORF with an expression tag. Expression varies depending on the nature of the gene.

Components: The ORF clone is ion-exchange column purified and shipped in a 2D barcoded Matrix tube containing 10ug of transfection-ready, dried plasmid DNA (reconstitute with 100 ul of water).

Reconstitution Method:

1. Centrifuge at 5,000xg for 5min.
2. Carefully open the tube and add 100ul of sterile water to dissolve the DNA.
3. Close the tube and incubate for 10 minutes at room temperature.
4. Briefly vortex the tube and then do a quick spin (less than 5000xg) to concentrate the liquid at the bottom.
5. Store the suspended plasmid at -20°C. The DNA is stable for at least one year from date of shipping when stored at -20°C.

RefSeq: [NM_144981.3](#)

RefSeq Size: 795 bp

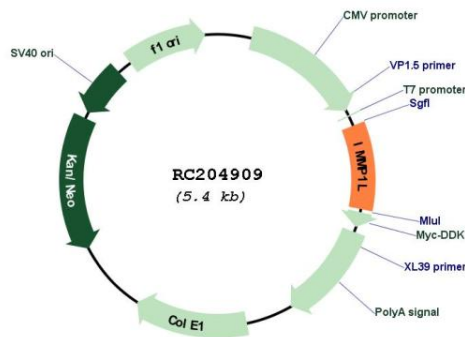
RefSeq ORF: 501 bp

Locus ID: 196294

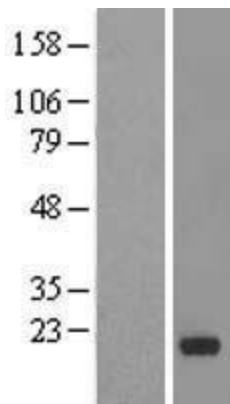
UniProt ID: [Q96LU5](#)

Cytogenetics:	11p13
Domains:	Peptidase_S26
Protein Families:	Protease
MW:	18.5 kDa
Gene Summary:	The mitochondrial inner membrane peptidase (IMP) complex generates mature, active proteins in the mitochondrial intermembrane space by proteolytically removing the mitochondrial targeting presequence of nuclear-encoded proteins. IMP1 and IMP2 (IMMP2L; MIM 605977) are the catalytic subunits of the IMP complex (Burri et al., 2005 [PubMed 15814844]).[supplied by OMIM, Sep 2008]

Product images:



Circular map for RC204909



Western blot validation of overexpression lysate (Cat# [LY408122]) using anti-DDK antibody (Cat# [TA50011-100]). Left: Cell lysates from untransfected HEK293T cells; Right: Cell lysates from HEK293T cells transfected with RC204909 using transfection reagent MegaTran 2.0 (Cat# [TT210002]).