

Product datasheet for **RC204908**

ZNF289 (ARFGAP2) (NM_032389) Human Tagged ORF Clone

Product data:

Product Type:	Expression Plasmids
Product Name:	ZNF289 (ARFGAP2) (NM_032389) Human Tagged ORF Clone
Tag:	Myc-DDK
Symbol:	ZNF289
Synonyms:	IRZ; NBLA10535; ZFP289; ZNF289
Mammalian Cell Selection:	Neomycin
Vector:	pCMV6-Entry (PS100001)
E. coli Selection:	Kanamycin (25 ug/mL)



[View online »](#)

ORF Nucleotide Sequence:

>RC204908 representing NM_032389
 Red=Cloning site Blue=ORF Green=Tags(s)

TTTTGTAATACGACTCACTATAGGGCGGCCGGAATTCGTCGACTGGATCCGGTACCGAGGAGATCTGCC
 GCC**CGCATCGCC**

ATGGCGCGGAGCCGAACAAGACCGAAATCCAGACTCTTTTTAAGAGGCTTCGCGCAGTTCCAACCAACA
 AGGCTGTTTCGACTGCGCGCCAAAGAATCCGAGTTGGCCAGCATCACGTACGGTGTTCCTTGTGCAT
 TGA CTGTTCCGGGTGCACCGCTCCCTGGGCGTCCATCTGAGCTTCATCAGGTCCACAGATTGGATTCC
 AACTGGAAGTGGTTCAGCTGAGGTGTATGCAAGTTCGCGGGAATGCCAATGCGACGGCTTTTTTCGCC
 AACATGGATGCACAGCCAATGATGCCAACACCAATAATAAGCCGAGCTGCCAGATGTACCGGGAGAA
 GATCCGGCAGCTGGGAGTGCAGCCCTGGCTAGGCATGGCACTGATCTTTGGATAGACAACATGAGTAGT
 GCCGTTCTAATCACTCCCAGAGAAGAAGGACTCTGATTTCTCACAGAACACTCAACCCCTGCCT
 GGGATGCGCCAGCCACTGAGCCTTCAGGGACCCAGCAGCCAGCCCGTCTACAGAGAGCAGTGGCCTGGC
 ACAGCCGAGCATGGCCCAACACAGACCTGCTTGGCACCTCACCAAAGCCTCACTGGAAGTAAAAGC
 TCCATCATTGGCAAGAAGAAGCCAGCAGAGCTAAGAAAGGGCTGGGTGCCAAGAAGGCCATAGGGGCC
 AGAAGGTGAGCAGCCAGAGCTTCAGTGAGATTGAGCGGCAGGCTCAGGTGGCAGAGAAGCTCCGTGAGCA
 GCAGGCAGCCGATGCCAAGAAGCAGGCGGAGGAGTCCATGGTTCGCTCCATGCGTCTGGCCTACCAGGAG
 CTCCAGATTGATCGTAAGAAAGAGGAAAAGAAGCTACAGAATCTGGAAGGGAAGAAGCGAGAGCAGGCAG
 AAAGTTGGGCATGGGCTTGGTATCCCGAAGCTCTGTCTCCACTCCGTGCTGTCTGAGATGCAGGTGAT
 TGAGCAGGAAACCCAGTGAGTGCAAAAATCCTCTCGCTCGCAGCTGGACTTGTGAGCATGTTGGTACT
 TTCGCTCTGGACCCCAAAGTACAAGGACAATCCCTTTCTTAGGGAAAGCTTTGGCTCCCGCTGGG
 ATACAGATGCTGCCTGGGTATGGACAGGATAGAGGAGAAGGAGCCAGAAGTGACCATCTCAAGCATCCG
 GCCTATTTTCAGAAAGAGCCACAACCGGAGGGAAGTGGAGAGCCGAGCTCAGGCCTCGAGTCTAGTGAG
 GCGCGTCAGAAATTCGCAGGAGCCAAAGCCATCTCATCTGACATGTTCTTTGGGCGGAGGTGGATGCGG
 AGTATGAGGCCAGGTCTCGGCTGCAGCAGCTCTCAGGCAGCAGTCCATCAGCTCTTCAGACCTCTTTGG
 GGACATGGATGGAGCTCACGGAGCAGGAAGTGTATCTCTGGGAAAGTGTCTGCTACAGCGGACATTGCC
 CAGTTTAAAGCAGGTGTCAAGTCTGTGGCTGGGAAAATGGCTGTGCTGGCCAATGGTGTGATGAATTCCT
 TGCAGGATCGCTACGGTCTCTAC

ACGCGTACGCGGCCGCTCGAGCAGAAACTCATCTCAGAAGAGGATCTGGCAGCAAATGATATCCTGGATT
 ACAAGGATGACGACGATAAGGTTTAA

Protein Sequence:

>RC204908 representing NM_032389
 Red=Cloning site Green=Tags(s)

MAAEPNKTEIQTLFKRLRAVPTNKACFDGAKNPSWASITYGVFLCIDCSGVHRS LGVHLSFIRSTELDS
 NWNWFQLRCMQVGNANATAFFRQHGTANDANTKYNRAAQMYREKIRQLGSAALARHGTDLWIDNMSS
 AVPNHSPEKKDSDFTEHTQPPAWDAPATEPSGTQQPAPSTESSGLAQPEHPNTDLLGTS PKASLELKS
 SIIGKKKPAAAKGLGAKKGLGAQKVSSQSFSEIERQAQVAEKLREQAADAQKQAEESMVASMLRAYQE
 LQIDRKKEEKKLQNLGKKREQAERLGMGLVSRSSVSHSVLSEMQVIEQETPVS AKSSRSQDLDFDDVGT
 FASGPPKYKDNPFSLGESFGRWDTDAAWGMDRVEEKEPEVTISSIRPISERATNRREVESRSGLESSE
 ARQKFAGAKAISSDMFFGREVDAEYEARSRLQQLSGSSAISSSDLFGDMDGAHGAGSVSLGNVLP TADIA
 QFKQGVKSVAGKMAVLANGVMNSLQDRYGSY

TRTRPLEQKLISEEDLAANDILDYKDDDDKV

Chromatograms:

https://cdn.origene.com/chromatograms/mk8120_f03.zip

Restriction Sites:

Sgfl-MluI

Cloning Scheme:


ACCN: NM_032389

ORF Size: 1563 bp

OTI Disclaimer: The molecular sequence of this clone aligns with the gene accession number as a point of reference only. However, individual transcript sequences of the same gene can differ through naturally occurring variations (e.g. polymorphisms), each with its own valid existence. This clone is substantially in agreement with the reference, but a complete review of all prevailing variants is recommended prior to use. [More info](#)

OTI Annotation: This clone was engineered to express the complete ORF with an expression tag. Expression varies depending on the nature of the gene.

Components: The ORF clone is ion-exchange column purified and shipped in a 2D barcoded Matrix tube containing 10ug of transfection-ready, dried plasmid DNA (reconstitute with 100 ul of water).

- Reconstitution Method:**
1. Centrifuge at 5,000xg for 5min.
 2. Carefully open the tube and add 100ul of sterile water to dissolve the DNA.
 3. Close the tube and incubate for 10 minutes at room temperature.
 4. Briefly vortex the tube and then do a quick spin (less than 5000xg) to concentrate the liquid at the bottom.
 5. Store the suspended plasmid at -20°C. The DNA is stable for at least one year from date of shipping when stored at -20°C.

Note: Plasmids are not sterile. For experiments where strict sterility is required, filtration with 0.22um filter is required.

RefSeq: [NM_032389.5](#)

RefSeq Size: 3039 bp

RefSeq ORF: 1566 bp

Locus ID: 84364

UniProt ID: [Q8N6H7](#)

Cytogenetics: 11p11.2

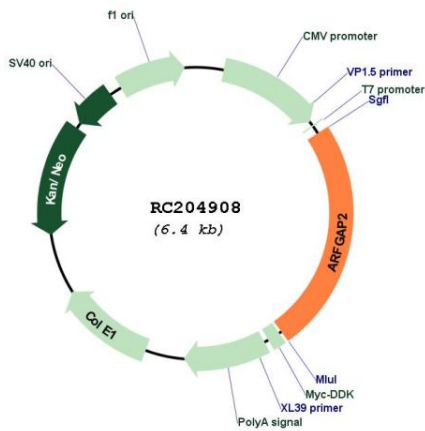
Domains: ArfGap

Protein Pathways: Endocytosis

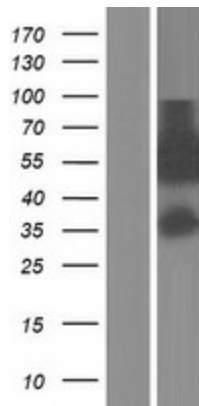
MW: 57.2 kDa

Gene Summary: GTPase-activating protein (GAP) for ADP ribosylation factor 1 (ARF1). Implicated in coatamer-mediated protein transport between the Golgi complex and the endoplasmic reticulum. Hydrolysis of ARF1-bound GTP may lead to dissociation of coatamer from Golgi-derived membranes to allow fusion with target membranes.[UniProtKB/Swiss-Prot Function]

Product images:



Circular map for RC204908



Western blot validation of overexpression lysate (Cat# [LY410154]) using anti-DDK antibody (Cat# [TA50011-100]). Left: Cell lysates from untransfected HEK293T cells; Right: Cell lysates from HEK293T cells transfected with RC204908 using transfection reagent MegaTran 2.0 (Cat# [TT210002]).