

Product datasheet for **RC204901**

CEACAM1 (NM_001024912) Human Tagged ORF Clone

Product data:

Product Type:	Expression Plasmids
Product Name:	CEACAM1 (NM_001024912) Human Tagged ORF Clone
Tag:	Myc-DDK
Symbol:	CEACAM1
Synonyms:	BGP; BGP1; BGPI
Mammalian Cell Selection:	Neomycin
Vector:	pCMV6-Entry (PS100001)
E. coli Selection:	Kanamycin (25 ug/mL)



[View online »](#)

ORF Nucleotide Sequence:

>RC204901 ORF sequence
 Red=Cloning site Blue=ORF Green=Tags(s)

TTTTGTAATACGACTCACTATAGGGCGGCCGGGAATTCGTCGACTGGATCCGGTACCGAGGAGATCTGCC
 GCCGCGATCGCC

ATGGGGCACCTCTCAGCCCCACTTCACAGAGTGCCTGTACCCTGGCAGGGGCTTCTGCTCACAGCCTCAC
 TTCTAACCTTCTGGAACCGCCACCAGCTGCCAGCTCACTACTGAATCCATGCCATTCAATGTTGCAGA
 GGGGAAGGAGGTTCTTCTCCTTGTCCACAATCTGCCCCAGCAACTTTTTGGCTACAGCTGGTACAAAGGG
 GAAAGAGTGGATGGCAACCGTCAAATTGTAGGATATGCAATAGGAACTCAACAAGCTACCCAGGGCCCG
 CAAACAGCGGTGAGAGACAATATACCCAATGCATCCCTGCTGATCCAGAACGTCACCCAGAATGACAC
 AGGATTCTACACCCTACAAGTCATAAAGTCAGATCTTGTGAATGAAGAAGCAACTGGACAGTTCATGTA
 TACCCGGAGCTGCCAAGCCCTCCATCTCCAGCAACAACCTCAACCTGTGGAGGACAAGGATGCTGTGG
 CCTTCACCTGTGAACCTGAGACTCAGGACACAACCTACCTGTGGTGGATAAACAATCAGAGCCTCCCGT
 CAGTCCCAGGCTGCAGCTGTCCAATGGCAACAGGACCCTCACTCTACTCAGTGTACAAGGAATGACACA
 GGACCCTATGAGTGTGAAATACAGAACCCAGTGTGCGAACCGCAGTGACCCAGTCACCTTGAATGTCA
 CCTATGGCCCGGACACCCCAACATTTCCCTTCAGACACCTATTACCGTCCAGGGGCAAACCTCAGCCT
 CTCCTGCTATGCAGCCTTAACCCACCTGCACAGTACTCCTGGCTTATCAATGGAACATTCAGCAAAGC
 ACACAAGAGCTCTTTATCCCTAACATCACTGTGAATAATAGTGGATCCTATACCTGCCACGCCAATAACT
 CAGTCACTGGCTGCAACAGGACCACAGTCAAGACGATCATAGTCACTGAGCTAAGTCCAGTAGTAGCAA
 GCCCAAAATCAAAGCCAGCAAGACCACAGTCAAGGAGATAAGGACTCTGTGAACCTGACCTGCTCCACA
 AATGCACTGGAATCTCCATCCGTTGGTCTTCAAAAACCAGAGTCTCCCGTCTCGGAGAGGATGAAGC
 TGTCACAGGGCAACACCACCTCAGCATAAACCTGTCAAGAGGGAGGATGCTGGGACGATTGGTGTGA
 GGTCTTCAACCAATCAGTAAGAACCAAGCGACCCCATCATGCTGAACGTAAACTATAATGCTCTACCA
 CAAGAAAATGGCCTCTCACCTGGGGCCATTGCTGGCATTGTGATTGGAGTAGTGGCCCTGGTTGCTCTGA
 TAGCAGTAGCCCTGGCATGTTTTCTGCATTTCCGGGAAGACCGGCAGGACCACTCCAATGACCCACCTAAC
 AAGA

ACGCGTACGCGGCCGCTCGAGCAGAAACTCATCTCAGAAGAGGATCTGGCAGCAAATGATATCCTGGATT
 ACAAGGATGACGACGATAAGGTTTAA

Protein Sequence:

>RC204901 protein sequence
 Red=Cloning site Green=Tags(s)

MGHLSAPLHRVRVPWQGLLLTASLLTFWNPPTTAQLTTESMPFNVAEGKEVLLL VHNLPQQLFGYSWYKG
 ERVDGNRQIVGYAIGTQQATPGPANSGRETIYPNASLLIQNVTTQNDTGFYTLQVIKSDLVNEEATGQFHV
 YPELKPQSISSNNSNPVEDKDAVAFTCEPETQDTTYLWWINNQLPVPSPRLQLSNGNRTL TLLSVTRNDT
 GPYECEIQNPVSNRSDPVTNLNVTYGPDTPTISPSDTYYRPGANLSLSCYAASNPPAQYSWLINGTFQQS
 TQELFIPNITVNNNSYSYCHANNSVTGCNRTTVKTIIVTELSPVVAKPQIKASKTTVTGDKDSVNLTCST
 NDTGISIRWFFKNQSLPSSERMKLSQGNTTSLINPVKREDAGTYWCEVFNPISKNQSDPIMLVNPNALP
 QENGLSPGAIAGIVIGVVALVALIAVALACFLHFHFKTGRTPMTHLTR

TRTRPLEQKLI SEEDLAANDILDYKDDDDKV

Chromatograms:

https://cdn.origene.com/chromatograms/mk6780_e04.zip

Restriction Sites:

Sgfl-Mlul

Cloning Scheme:

ACCN: NM_001024912

ORF Size: 1404 bp

OTI Disclaimer: Due to the inherent nature of this plasmid, standard methods to replicate additional amounts of DNA in E. coli are highly likely to result in mutations and/or rearrangements. Therefore, OriGene does not guarantee the capability to replicate this plasmid DNA. Additional amounts of DNA can be purchased from OriGene with batch-specific, full-sequence verification at a reduced cost. Please contact our customer care team at custsupport@origene.com or by calling 301.340.3188 option 3 for pricing and delivery.

The molecular sequence of this clone aligns with the gene accession number as a point of reference only. However, individual transcript sequences of the same gene can differ through naturally occurring variations (e.g. polymorphisms), each with its own valid existence. This clone is substantially in agreement with the reference, but a complete review of all prevailing variants is recommended prior to use. [More info](#)

OTI Annotation: This clone was engineered to express the complete ORF with an expression tag. Expression varies depending on the nature of the gene.

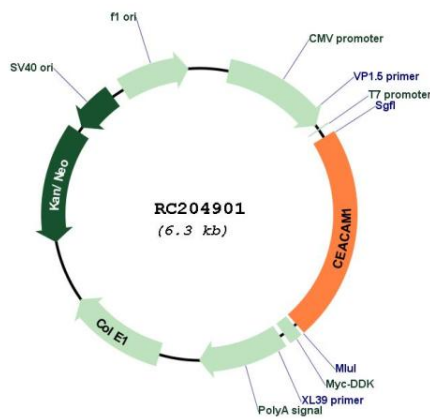
Components: The ORF clone is ion-exchange column purified and shipped in a 2D barcoded Matrix tube containing 10ug of transfection-ready, dried plasmid DNA (reconstitute with 100 ul of water).

- Reconstitution Method:**
1. Centrifuge at 5,000xg for 5min.
 2. Carefully open the tube and add 100ul of sterile water to dissolve the DNA.
 3. Close the tube and incubate for 10 minutes at room temperature.
 4. Briefly vortex the tube and then do a quick spin (less than 5000xg) to concentrate the liquid at the bottom.
 5. Store the suspended plasmid at -20°C. The DNA is stable for at least one year from date of shipping when stored at -20°C.

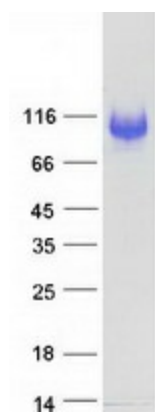
RefSeq Size:	3475 bp
RefSeq ORF:	1395 bp
Locus ID:	634
UniProt ID:	P13688
Cytogenetics:	19q13.2
Protein Families:	Druggable Genome, Transmembrane
MW:	51.1 kDa

Gene Summary: This gene encodes a member of the carcinoembryonic antigen (CEA) gene family, which belongs to the immunoglobulin superfamily. Two subgroups of the CEA family, the CEA cell adhesion molecules and the pregnancy-specific glycoproteins, are located within a 1.2 Mb cluster on the long arm of chromosome 19. Eleven pseudogenes of the CEA cell adhesion molecule subgroup are also found in the cluster. The encoded protein was originally described in bile ducts of liver as biliary glycoprotein. Subsequently, it was found to be a cell-cell adhesion molecule detected on leukocytes, epithelia, and endothelia. The encoded protein mediates cell adhesion via homophilic as well as heterophilic binding to other proteins of the subgroup. Multiple cellular activities have been attributed to the encoded protein, including roles in the differentiation and arrangement of tissue three-dimensional structure, angiogenesis, apoptosis, tumor suppression, metastasis, and the modulation of innate and adaptive immune responses. Multiple transcript variants encoding different isoforms have been reported, but the full-length nature of all variants has not been defined. [provided by RefSeq, May 2010]

Product images:



Circular map for RC204901



Coomassie blue staining of purified CEACAM1 protein (Cat# [TP304901]). The protein was produced from HEK293T cells transfected with CEACAM1 cDNA clone (Cat# RC204901) using MegaTran 2.0 (Cat# [TT210002]).