

Product datasheet for **RC204900**

CDR2 (NM_001802) Human Tagged ORF Clone

Product data:

Product Type:	Expression Plasmids
Product Name:	CDR2 (NM_001802) Human Tagged ORF Clone
Tag:	Myc-DDK
Symbol:	CDR2
Synonyms:	CDR62; Yo
Mammalian Cell Selection:	Neomycin
Vector:	pCMV6-Entry (PS100001)
E. coli Selection:	Kanamycin (25 ug/mL)



[View online »](#)

ORF Nucleotide Sequence:

>RC204900 ORF sequence
 Red=Cloning site Blue=ORF Green=Tags(s)

TTTTGTAATACGACTCACTATAGGGCGGCCGGGAATTCGTCGACTGGATCCGGTACCGAGGAGATCTGCC
 GCC**CGCATCGCC**

ATGCTGGCGGAAAACCTGGTAGAGGAGTTTGGATGAAGGAGGACGAGCCGTGGTACGACCACCAGGACC
 TCCAGCAAGATCTTCAACTTGTCTGCTGAGCTTGGGAAGACATTACTGGATCGGAACACAGAGTTGGAGGA
 CTCTGTTACGAGATGTATAACAACATCAGGAGCAGTTACAGGAAATTGAGTATCTGACGAAGCAAGTG
 GAATTCTACGGCAGATGAACGAACAACATGCAAAGGTTTATGAACAATTAGACGTCACAGCAAGGGAAC
 TGGAGAACAACAACTAAAAGCTAGTTGCTGACAGCAAGGCCTCACAGCAAAAGATTCTGAGCCTGACTGA
 AACGATTGAATGCCTGCAAACCAACATTGATCACCTCCAGAGCCAAGTGGAGGAGCTGAAGTCATCTGGC
 CAAGGGAGAAGGAGCCCGGAAAGTGTGACCAGGAGAAACCGGCACCCAGCTTTGCATGTCTGAAGGAGC
 TGTATGACCTCCGCAACACTTCGTGTATGATCATGTGTTGCTGAGAAGATCACTTCCTTGAAGGTCA
 GCCAAGCCCTGATGAAGAGGAAAATGAGCACTTAAAAAACAGTGACAATGTTGCAAGGCCAGCTGAGC
 CTGGAGCGGCAGAAAGCGGTGACTATGGAGGAGGAATATGGGCTCGTGTTAAAGGAGAACAGTGAAGTGG
 AGCAGCAGCTGGGGGCCACAGGTGCCTACCGAGCACGGGCGCTGGAAGTGAAGGCCGAGGTGGCAGAGAT
 GCGACAGATGTTGCAGTCAGAGCATCCATTTGTGAATGGAGTTGAGAAGCTGGTCCAGACTCTCTGTAT
 GTTCCTTTCAAAGAGCCAGCCAGAGCCTGCTGGAAGAGATGTTCTGACTGTGCCGGAATCACATAGAA
 AGCCTCTCAAGCGCAGCAGCAGTGAAGCAGTCCCTCAGCAGCTTGGCAGGGAGTGACATCGTAAGGGCCA
 CGAGGAGACCTGCATCAGGAGGGCAAGGCTGTGAAACAGAGGGGCATCTCCCTTCTGCACGAAGTGGAC
 ACGCAGTACAGCGCCCTGAAGGTGAAGTATGAAGAGTTGCTGAAGAAGTGCCAAGAGGAACAGGACTCCC
 TGTACACAAGGCTGTGCAGACCTCCAGGGCTGCAGCAAGGACCTGACTGGAGTGAAGCCAGCTGAGC
 GCCTGTTGCCAGCGGCTGGGAAGTGGCCTCTGTCAACCCAGAGCCCGTGAGTTCCCTACAACACCTCCA
 GAATACAAGCGTTGTTTAAAGGAGATCTTTAGTTGCATCAAGAAAATAAGCAGGAAATAGATGAACAGA
 GAACAAAATACCGATCACTCTCCTCTCATTCT

ACGCGTACGCGGCCGCTCGAGCAGAACTCATCTCAGAAGAGGATCTGGCAGCAATGATATCCTGGATT
 ACAAGGATGACGACGATAAGGTTTAA

Protein Sequence:

>RC204900 protein sequence
 Red=Cloning site Green=Tags(s)

MLAENLVEEFEMKEDEPWYDHDQLQDLQLAAELGKTLDRNTELEDSVQQMYTTNQEQLQEIEYLTKQV
 ELLRQMNEQHAKVYEQLDVTARELEETNQKLVADSKASQQKILSLTETIECLQTNIDHLQSQVEELKSSG
 QGRRSPGKCDQEKPAFSACLKELYDLRQHFVYDHFVFAEKITSLQGQSPDEEENEHLKKTVTMLQAQLS
 LERQKRVTMEEYGLVLKENSELEQQLGATGAYRARALELEAEVAEMRQMLQSEHPFVNGVEKLVPSLSY
 VPFKEPSQSLLEEMFLTVPESHRKLKRSSETILSSLAGSDIVKGHEETCIRRAKAVKQIRGILLSHEVD
 TQYSALKVKYEELLKKCQEEQDSLHKAVQTSRAAKDLTGVNAQSEPVASGWELASVNPEPVSSPTTPP
 EYKALFKEIFSCIKTKQEIDEQRTKYRSLSSH

TRTRPLEQKLISEEDLAANDILDYKDDDDKV

Chromatograms:

https://cdn.origene.com/chromatograms/mk6574_h03.zip

Restriction Sites:

Sgfl-Mlul

Cloning Scheme:


ACCN: NM_001802

ORF Size: 1362 bp

OTI Disclaimer: The molecular sequence of this clone aligns with the gene accession number as a point of reference only. However, individual transcript sequences of the same gene can differ through naturally occurring variations (e.g. polymorphisms), each with its own valid existence. This clone is substantially in agreement with the reference, but a complete review of all prevailing variants is recommended prior to use. [More info](#)

OTI Annotation: This clone was engineered to express the complete ORF with an expression tag. Expression varies depending on the nature of the gene.

Components: The ORF clone is ion-exchange column purified and shipped in a 2D barcoded Matrix tube containing 10ug of transfection-ready, dried plasmid DNA (reconstitute with 100 ul of water).

Reconstitution Method:

1. Centrifuge at 5,000xg for 5min.
2. Carefully open the tube and add 100ul of sterile water to dissolve the DNA.
3. Close the tube and incubate for 10 minutes at room temperature.
4. Briefly vortex the tube and then do a quick spin (less than 5000xg) to concentrate the liquid at the bottom.
5. Store the suspended plasmid at -20°C. The DNA is stable for at least one year from date of shipping when stored at -20°C.

RefSeq: [NM_001802.2](#)

RefSeq Size: 2702 bp

RefSeq ORF: 1365 bp

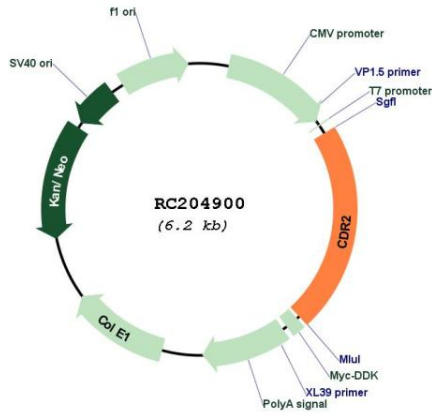
Locus ID: 1039

UniProt ID: [Q01850](#)

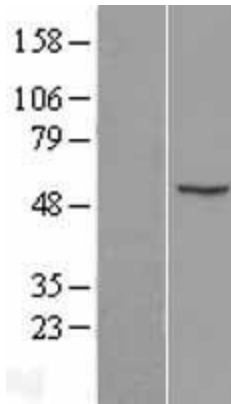
Cytogenetics: 16p12.2

MW: 51.9 kDa

Product images:



Circular map for RC204900



Western blot validation of overexpression lysate (Cat# [LY419738]) using anti-DDK antibody (Cat# [TA50011-100]). Left: Cell lysates from untransfected HEK293T cells; Right: Cell lysates from HEK293T cells transfected with RC204900 using transfection reagent MegaTran 2.0 (Cat# [TT210002]).