

## Product datasheet for **RC204899**

### Endothelin B Receptor (EDNRB) (NM\_000115) Human Tagged ORF Clone

#### Product data:

|                           |  |
|---------------------------|--|
| Product Type:             | Expression Plasmids  |
| Product Name:             | Endothelin B Receptor (EDNRB) (NM_000115) Human Tagged ORF Clone |
| Tag:                      | Myc-DDK  |
| Symbol:                   | Endothelin B Receptor  |
| Synonyms:                 | ABCDS; ET-B; ET-BR; ETB; ETB1; ETBR; ETRB; HSCR; HSCR2; WS4A     |
| Mammalian Cell Selection: | Neomycin   |
| Vector:                   | pCMV6-Entry (PS100001)   |
| E. coli Selection:        | Kanamycin (25 ug/mL)   |



[View online »](#)

**ORF Nucleotide Sequence:**

>RC204899 ORF sequence  
 Red=Cloning site Blue=ORF Green=Tags(s)

TTTTGTAATACGACTCACTATAGGGCGGCCGGAATTCGTCGACTGGATCCGGTACCGAGGAGATCTGCC  
 GCCGCGATCGCC

ATGCAGCCGCCTCCAAGTCTGTGCGGACGCGCCCTGGTTGCGCTGTTCTTGCCGCGCCGTGTCGCGGA  
 TCTGGGGAGAGGAGAGAGCTTCCCGCCTGACAGGGCCACTCCGCTTTTGCAAACCGCAGAGATAATGAC  
 GCCACCCACTAAGACCTTATGGCCCAAGGGTTCCAACGCCAGTCTGGCGCGGTGTTGGCACCTGCGGAG  
 GTGCCTAAAGGAGACAGGACGGCAGGATCTCCGCCACGCACCATCTCCCTCCCCGTGCCAAGGACCCA  
 TCGAGATCAAGGAGACTTCAAATACATCAACACGGTTGTGCTGCTTGTGTTCTGCTGTTGGGATCAT  
 CGGGAATCCACACTTCTGAGAATTATCTACAAGAACAAGTGCATGCGAAACGGTCCCAATATCTTGATC  
 GCCAGCTTGGCTCTGGGAGACCTGCTGCACATCGTCATTGACATCCCTATCAATGTCTACAAGCTGCTGG  
 CAGAGGACTGGCATTGGAGCTGAGATGTGAAGCTGGTGCCTTCATACAGAAAGCCTCCGTGGGAAT  
 CACTGTGCTGAGTCTATGTGCTCTGAGTATTGACAGATATCGAGCTGTTGCTTCTTGGAGTAGAATTA  
 GGAATTGGGGTTCCAAAATGGACAGCAGTAGAAATGTTTTGATTGGGTGGTCTCTGTGGTTCTGGCTG  
 TCCTGAAGCCATAGTTTTGATATAATTACGATGGACTACAAAGGAAGTTATCTGCGAATCTGCTTGTCT  
 TCATCCCGTTCAGAAGACAGCTTTCATGCACTTTTACAAGACAGCAAAGATTGGTGGCTGTTCACTTTC  
 TATTTCTGCTTGGCATTGGCCATCACTGCATTTTTTATACACTAATGACCTGTGAAATGTTGAGAAAGA  
 AAAGTGGCATGCAGATTGCTTTAAATGATCACCTAAAGCAGAGACGGGAAGTGGCCAAAACCGTCTTTTG  
 CCTGGTCTTGTCTTGGCCCTGCTGGCTTCCCTTACCTCAGCAGGATTCTGAAGCTCACTCTTTAT  
 AATCAGAATGATCCCAATAGATGTGAACCTTTGAGCTTCTGTTGGTATTGGACTATATTGGTATCAACA  
 TGGCTTCACTGAATTCCGCATTAACCCAATTGCTCTGTATTTGGTGGAGCAAAGATTCAAAAACCTGCTT  
 TAAGTCATGCTTATGCTGCTGGTGGCAGTCATTTGAAGAAAAACAGTCCTTGGAGAAAAGCAGTCGTGC  
 TTAAGGTTCAAAGCTAATGATCACGGATATGACAACTCCGTTCCAGTAATAAATACAGCTCATCT

ACGCGTACGCGGCCGCTCGAGCAGAACTCATCTCAGAAGAGGATCTGGCAGCAAATGATATCCTGGATT  
 ACAAGGATGACGACGATAAGGTTTAA

**Protein Sequence:**

>RC204899 protein sequence  
 Red=Cloning site Green=Tags(s)

MQPPPSLCGRALVALVLACGLSRIWGEERGFPPDRATPLLQTAEIMTPPTKTLWPKGSNASLARS LAPAE  
 VPKGDRTAGSPRTISPPPCQGP I E I K E T F K Y I N T V V S C L V F V L G I I G N S T L L R I I Y K N K M R N G P N I L I  
 A S L A L G D L L H I V I D I P I N V Y K L L A E D W P F G A E M C K L V P F I Q K A S V G I T V L S L C A L S I D R Y R A V A S W S R I K  
 G I G V P K W T A V E I V L I W V V S V L A V P E A I G F D I I T M D Y K G S Y L R I C L L H P V Q K T A F M Q F Y K T A K D W W L F S F  
 Y F C L P L A I T A F F Y T L M T C E M L R K K S G M Q I A L N D H L K Q R R E V A K T V F C L V L V F A L C W L P L H L S R I L K L T L Y  
 N Q N D P N R C E L L S F L L V L D Y I G I N M A S L N S C I N P I A L Y L V S K R F K N C F K S C L C C W C Q S F E E K Q S L E E K Q S C  
 L K F K A N D H G Y D N F R S S N K Y S S

TRTRPLEQKLISEEDLAANDILDYKDDDDKV

**Chromatograms:**

[https://cdn.origene.com/chromatograms/mk6175\\_b03.zip](https://cdn.origene.com/chromatograms/mk6175_b03.zip)

**Restriction Sites:**

Sgfl-Mlul

**Cloning Scheme:**


**ACCN:** NM\_000115

**ORF Size:** 1326 bp

**OTI Disclaimer:** Due to the inherent nature of this plasmid, standard methods to replicate additional amounts of DNA in E. coli are highly likely to result in mutations and/or rearrangements. Therefore, OriGene does not guarantee the capability to replicate this plasmid DNA. Additional amounts of DNA can be purchased from OriGene with batch-specific, full-sequence verification at a reduced cost. Please contact our customer care team at [custsupport@origene.com](mailto:custsupport@origene.com) or by calling 301.340.3188 option 3 for pricing and delivery.

The molecular sequence of this clone aligns with the gene accession number as a point of reference only. However, individual transcript sequences of the same gene can differ through naturally occurring variations (e.g. polymorphisms), each with its own valid existence. This clone is substantially in agreement with the reference, but a complete review of all prevailing variants is recommended prior to use. [More info](#)

**OTI Annotation:** This clone was engineered to express the complete ORF with an expression tag. Expression varies depending on the nature of the gene.

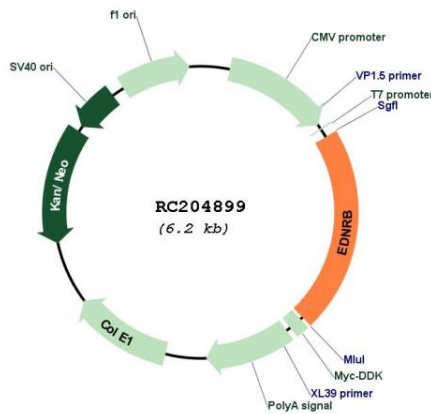
**Components:** The ORF clone is ion-exchange column purified and shipped in a 2D barcoded Matrix tube containing 10ug of transfection-ready, dried plasmid DNA (reconstitute with 100 ul of water).

**Reconstitution Method:**

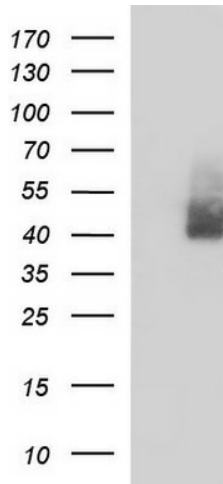
1. Centrifuge at 5,000xg for 5min.
2. Carefully open the tube and add 100ul of sterile water to dissolve the DNA.
3. Close the tube and incubate for 10 minutes at room temperature.
4. Briefly vortex the tube and then do a quick spin (less than 5000xg) to concentrate the liquid at the bottom.
5. Store the suspended plasmid at -20°C. The DNA is stable for at least one year from date of shipping when stored at -20°C.

|                          |  |
|--------------------------|--|
| <b>Note:</b>             | Plasmids are not sterile. For experiments where strict sterility is required, filtration with 0.22um filter is required.   |
| <b>RefSeq:</b>           | <a href="#">NM_000115.1</a> , <a href="#">NP_000106.1</a>  |
| <b>RefSeq Size:</b>      | 4296 bp  |
| <b>RefSeq ORF:</b>       | 1329 bp  |
| <b>Locus ID:</b>         | 1910   |
| <b>UniProt ID:</b>       | <a href="#">P24530</a>   |
| <b>Cytogenetics:</b>     | 13q22.3  |
| <b>Domains:</b>          | 7tm_1  |
| <b>Protein Families:</b> | Druggable Genome, GPCR, Transmembrane  |
| <b>Protein Pathways:</b> | Calcium signaling pathway, Melanogenesis, Neuroactive ligand-receptor interaction  |
| <b>MW:</b>               | 49.6 kDa   |
| <b>Gene Summary:</b>     | The protein encoded by this gene is a G protein-coupled receptor which activates a phosphatidylinositol-calcium second messenger system. Its ligand, endothelin, consists of a family of three potent vasoactive peptides: ET1, ET2, and ET3. Studies suggest that the multigenic disorder, Hirschsprung disease type 2, is due to mutations in the endothelin receptor type B gene. Alternative splicing and the use of alternative promoters results in multiple transcript variants. [provided by RefSeq, Oct 2016] |

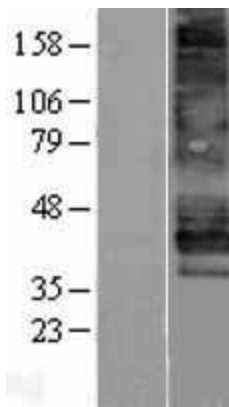
### Product images:



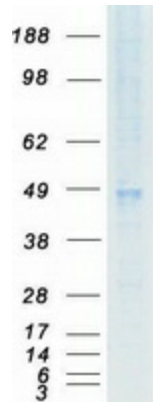
Circular map for RC204899



HEK293T cells were transfected with the pCMV6-ENTRY control (Cat# [PS100001], Left lane) or pCMV6-ENTRY EDNRB (Cat# RC204899, Right lane) cDNA for 48 hrs and lysed. Equivalent amounts of cell lysates (5 ug per lane) were separated by SDS-PAGE and immunoblotted with anti-EDNRB(Cat# [TA590006]). Positive lysates [LY400037] (100ug) and [LC400037] (20ug) can be purchased separately from OriGene.



Western blot validation of overexpression lysate (Cat# [LY426542]) using anti-DDK antibody (Cat# [TA50011-100]). Left: Cell lysates from untransfected HEK293T cells; Right: Cell lysates from HEK293T cells transfected with [RC225723] using transfection reagent MegaTran 2.0 (Cat# [TT210002]).



Coomassie blue staining of purified EDNRB protein (Cat# [TP304899]). The protein was produced from HEK293T cells transfected with EDNRB cDNA clone (Cat# RC204899) using MegaTran 2.0 (Cat# [TT210002]).