

Product datasheet for **RC204897**

SULT1A4 (NM_001017391) Human Tagged ORF Clone

Product data:

Product Type:	Expression Plasmids
Product Name:	SULT1A4 (NM_001017391) Human Tagged ORF Clone
Tag:	Myc-DDK
Symbol:	SULT1A4
Synonyms:	aryl sulfotransferase; phenol sulfotransferase; sulfokinase; sulfotransferase family, cytosolic, 1A, phenol-preferring, member 4
Mammalian Cell Selection:	Neomycin
Vector:	pCMV6-Entry (PS100001)
E. coli Selection:	Kanamycin (25 ug/mL)
ORF Nucleotide Sequence:	>RC204897 ORF sequence Red=Cloning site Blue=ORF Green=Tags(s)

TTTTGTAATACGACTCACTATAGGGCGGCCGGAATTCGTCGACTGGATCCGGTACCGAGGAGATCTGCC
GCC**CGATCGCC**

ATGGAGCTGATCCAGGACACCTCCCGCCGCACTGGAGTACGTGAAGGGGTCCCGCTCATCAAGTACT
TTGCAGAGGCACTGGGGCCCTGCAGAGCTTCCAAGCCGACCTGATGACCTGCTCATCAACACCTACCC
CAAGTCTGGCACCACCTGGGTGAGCCAGATACTGGACATGATCTACCAGGGCGGCACCTAGAGAAGTGT
AACCGGGCTCCCATCTACGTACGGGTGCCCTTCCCTTGAGGTTAATGATCCAGGGGAACCCCTCAGGGCTGG
AGACTCTGAAAGACACACCGCCCCACGGCTCATCAAGTCACACCTGCCCTGGCTCTGCTCCCTCAGAC
TCTGTTGGATCAGAAGGTCAAGGTGCTATGTTGCCGAAACCCAAAGGACGTGGCGGTCTCCTACTAC
CATTTCCACCGTATGAAAAGGGCGACCCTGAGCCTGGGACCTGGGACAGCTTCTGGAAAAGTTTATGG
CTGGAGAAGTGTCTACGGTCCCTGGTACCAGCACGTGCAGGAGTGGTGGGAGCTGAGCCGACCCACCC
TGTTCTCTACCTTCTATGAAGACATGAAGGAGAACCCAAAAGGGAGATTCAAAGATCCTGGAGTTT
GTGGGGCGCTCCCTGCCAGAGGAGACCATGGACTTCATGGTTCAGCACACGTCGTTCAAGGAGATGAAGA
AGAACCCTATGACCAACTACACCACCGTCCCCAGGAGCTCATGGACCACAGCATCTCCCCCTTCATGAG
GAAAGGCATGGCTGGGGACTGGAAGACCACCTCACCGTGGCGCAGAATGAGCGCTTCGATGCGGACTAT
GCGGAGAAGATGGCAGGCTGCAGCCTCAGCTTCCGCTCTGAGCTG

ACGCGTACGCGGCCGCTCGAGCAGAACTCATCTCAGAAGAGGATCTGGCAGCAAATGATATCCTGGATT
ACAAGGATGACGACGATAAGGTTTAA



[View online »](#)

Protein Sequence: >RC204897 protein sequence
Red=Cloning site Green=Tags(s)

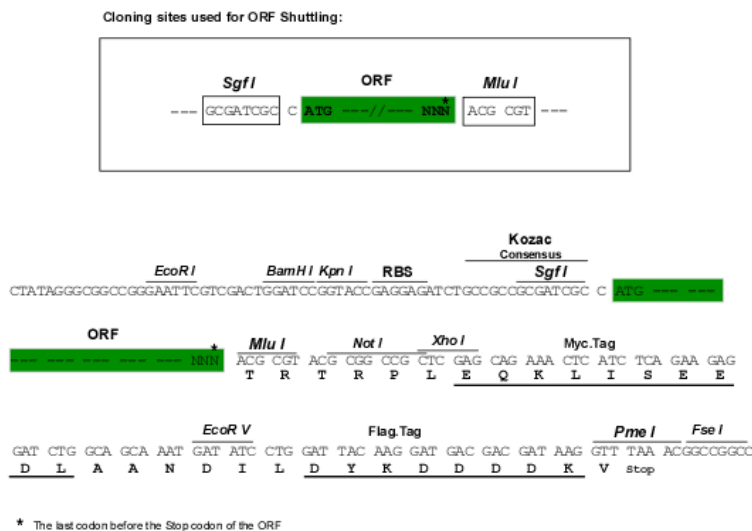
MELIQDTSRPPLEYVKGVPLIKYFAEALGPLQSFQARPDLLINTYPKSGTTWVSQILDMIYQGGDLEKC
NRAPIYVRVPFLEVNDPGEPGLETLKDTPPPRLIKSHLPLALLPQTLLDQKVKVYVARNPKDVAVSY
HFHRMEKAHPEPGTWSDFLEKFMAGEVSYGSWYQHVEWWELSRTHPVL YLFYEDMKENPKREIQKILEF
VGRSLPEETMDFMVQHTSFKEMKKNPMTNYTTVPQELMDHSISPFMRKGMAGDWKTTFVTAQNERFDADY
AEKMAGCSLSFRSEL

TRTRPLEQKLISEEDLAANDILDYKDDDDKV

Chromatograms: https://cdn.origene.com/chromatograms/mk6437_b07.zip

Restriction Sites: SgfI-MluI

Cloning Scheme:



ACCN: NM_001017391

ORF Size: 885 bp

OTI Disclaimer: The molecular sequence of this clone aligns with the gene accession number as a point of reference only. However, individual transcript sequences of the same gene can differ through naturally occurring variations (e.g. polymorphisms), each with its own valid existence. This clone is substantially in agreement with the reference, but a complete review of all prevailing variants is recommended prior to use. [More info](#)

OTI Annotation: This clone was engineered to express the complete ORF with an expression tag. Expression varies depending on the nature of the gene.

Components: The ORF clone is ion-exchange column purified and shipped in a 2D barcoded Matrix tube containing 10ug of transfection-ready, dried plasmid DNA (reconstitute with 100 ul of water).

Reconstitution Method:

1. Centrifuge at 5,000xg for 5min.
2. Carefully open the tube and add 100ul of sterile water to dissolve the DNA.
3. Close the tube and incubate for 10 minutes at room temperature.
4. Briefly vortex the tube and then do a quick spin (less than 5000xg) to concentrate the liquid at the bottom.
5. Store the suspended plasmid at -20°C. The DNA is stable for at least one year from date of shipping when stored at -20°C.

RefSeq: [NM_001017391.1](#), [NP_001017391.1](#)

RefSeq Size: 1411 bp

RefSeq ORF: 887 bp

Locus ID: 445329

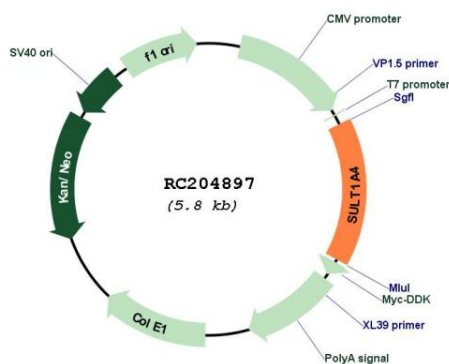
Cytogenetics: 16p11.2

Protein Pathways: Sulfur metabolism

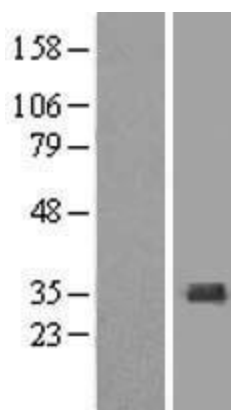
MW: 34.2 kDa

Gene Summary: Sulfotransferase enzymes catalyze the sulfate conjugation of many hormones, neurotransmitters, drugs, and xenobiotic compounds. These cytosolic enzymes are different in their tissue distributions and substrate specificities. The gene structure (number and length of exons) is similar among family members. This gene encodes a phenol sulfotransferase with thermolabile enzyme activity. Four sulfotransferase genes are located on the p arm of chromosome 16, this gene and SULT1A3 arose from a segmental duplication. Read-through transcription exists between this gene and the upstream SLX1B (SLX1 structure-specific endonuclease subunit homolog B) gene that encodes a protein containing GIY-YIG domains. [provided by RefSeq, Nov 2010]

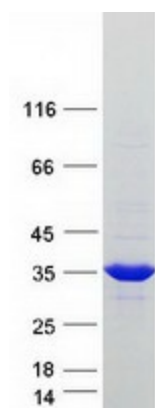
Product images:



Circular map for RC204897



Western blot validation of overexpression lysate (Cat# [LY422770]) using anti-DDK antibody (Cat# [TA50011-100]). Left: Cell lysates from untransfected HEK293T cells; Right: Cell lysates from HEK293T cells transfected with [RC222321] using transfection reagent MegaTran 2.0 (Cat# [TT210002]).



Coomassie blue staining of purified SULT1A4 protein (Cat# [TP304897]). The protein was produced from HEK293T cells transfected with SULT1A4 cDNA clone (Cat# RC204897) using MegaTran 2.0 (Cat# [TT210002]).