

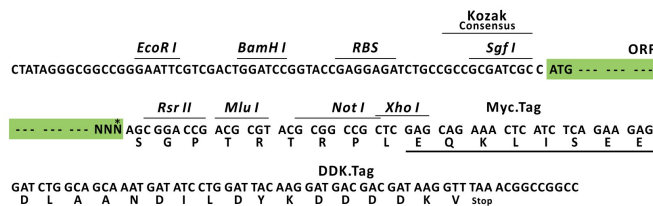
Product datasheet for RC204895L1

p15 INK4b (CDKN2B) (NM_004936) Human Tagged Lenti ORF Clone

Product data:

Product Type:	Expression Plasmids
Product Name:	p15 INK4b (CDKN2B) (NM_004936) Human Tagged Lenti ORF Clone
Tag:	Myc-DDK
Symbol:	p15 INK4b
Synonyms:	CDK4I; INK4B; MTS2; P15; p15INK4b; TP15
Mammalian Cell Selection:	None
Vector:	pLenti-C-Myc-DDK (PS100064)
E. coli Selection:	Chloramphenicol (34 ug/mL)
ORF Nucleotide Sequence:	The ORF insert of this clone is exactly the same as(RC204895).
Restriction Sites:	SgfI-RsrII
Cloning Scheme:	

Cloning sites used for ORF Shuttling:



* The last codon before the Stop codon of the ORF.

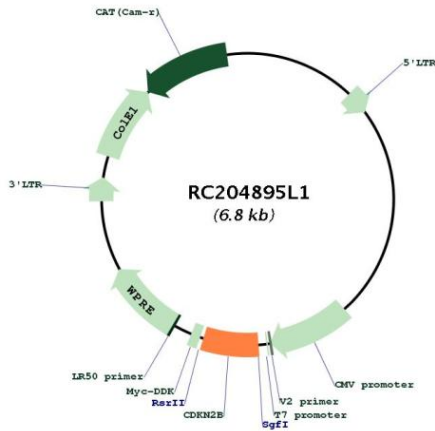
ACCN:	NM_004936
ORF Size:	414 bp



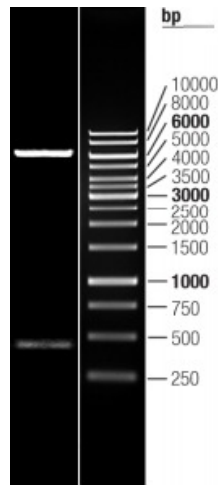
[View online »](#)

OTI Disclaimer:	The molecular sequence of this clone aligns with the gene accession number as a point of reference only. However, individual transcript sequences of the same gene can differ through naturally occurring variations (e.g. polymorphisms), each with its own valid existence. This clone is substantially in agreement with the reference, but a complete review of all prevailing variants is recommended prior to use. More info
OTI Annotation:	This clone was engineered to express the complete ORF with an expression tag. Expression varies depending on the nature of the gene.
Components:	The ORF clone is ion-exchange column purified and shipped in a 2D barcoded Matrix tube containing 10ug of transfection-ready, dried plasmid DNA (reconstitute with 100 ul of water).
Reconstitution Method:	<ol style="list-style-type: none">1. Centrifuge at 5,000xg for 5min.2. Carefully open the tube and add 100ul of sterile water to dissolve the DNA.3. Close the tube and incubate for 10 minutes at room temperature.4. Briefly vortex the tube and then do a quick spin (less than 5000xg) to concentrate the liquid at the bottom.5. Store the suspended plasmid at -20°C. The DNA is stable for at least one year from date of shipping when stored at -20°C.
RefSeq:	NM_004936.3
RefSeq Size:	3878 bp
RefSeq ORF:	417 bp
Locus ID:	1030
UniProt ID:	P42772
Cytogenetics:	9p21.3
Domains:	ANK
Protein Families:	Druggable Genome
Protein Pathways:	Cell cycle, Pathways in cancer, Small cell lung cancer, TGF-beta signaling pathway
MW:	14.5 kDa
Gene Summary:	This gene lies adjacent to the tumor suppressor gene CDKN2A in a region that is frequently mutated and deleted in a wide variety of tumors. This gene encodes a cyclin-dependent kinase inhibitor, which forms a complex with CDK4 or CDK6, and prevents the activation of the CDK kinases, thus the encoded protein functions as a cell growth regulator that controls cell cycle G1 progression. The expression of this gene was found to be dramatically induced by TGF beta, which suggested its role in the TGF beta induced growth inhibition. Two alternatively spliced transcript variants of this gene, which encode distinct proteins, have been reported. [provided by RefSeq, Jul 2008]

Product images:



Circular map for RC204895L1



Double digestion of RC204895L1 using SgfI and RsrII