

## Product datasheet for **RC204893**

### Helicase SKI2W (SKIV2L) (NM\_006929) Human Tagged ORF Clone

#### Product data:

Product Type:	Expression Plasmids
Product Name:	Helicase SKI2W (SKIV2L) (NM_006929) Human Tagged ORF Clone
Tag:	Myc-DDK
Symbol:	Helicase SKI2W
Synonyms:	170A; DDX13; HLP; SKI2; SKI2W; SKIV2; SKIV2L1; THES2
Mammalian Cell Selection:	Neomycin
Vector:	pCMV6-Entry (PS100001)
E. coli Selection:	Kanamycin (25 ug/mL)
ORF Nucleotide Sequence:	>RC204893 representing NM_006929 Red=Cloning site Blue=ORF Green=Tags(s)

TTTTGTAATACGACTCACTATAGGGCGGCCGGAATTCGTCGACTGGATCCGGTACCGAGGAGATCTGCC  
GCC**CGATCGCC**

ATGATGGAGACAGAGCGACTTGTGCTACCCCTCCAGATCCCCTGGACCTACCCCTCGGGCCGTGGAGC  
TCGGATGCACGGGGCACTGGGAGCTGCTGAACTTGCTGGAGCTCCAGAGAGTAGCCTTCCCATGGCCT  
CCCTCCTGTGCCAGATCTGCAGCAAGAAGCAGAACAGTTGTTTCTGTCATCCCAGCCTGGCTGCCT  
CTGCATGGTGTGGAGCACTCAGCCCGAAAATGGCAGAGGAAGACGGATCCCTGGTCTCTTTGGCTGTGC  
TGGGAGCCCGAGTCCCATCCGACCTACAGGCCAAAGACACCCAACCACAGGCCAGATACTGGGTTACAA  
AGAGGTCTTGCTGGAGAACACAAATCTCTCGGCTACAACCTCCTTGTCTCTTCGCCGGCCTCCAGGGCCA  
GCCTCCAGTCCCTATGGGGAAATCCAACCTCGGTATCCCTTCTGGCCAGGGGGATGGATGAACCCACCA  
TAACAGATCTGAACACACGGGAGGAGGCTGAGGAGGAGATAGACTTTGAGAAAGATCTTCTACTATTCC  
ACCTGGTTTCAAGAAAGGCATGGACTTTGCACAAAAGATTGTCCAACCTCCAGCTCCTGGACTACTAAGC  
CTTAGCTGTCTGTTGGAGCCTCTGGATTGGGTGGGGTGACGAGGATGAGAATGAGGCAGTGGGACAGC  
CAGGAGGTCCCAGAGGGGACACTGTTTCAGCCTCTCCCTGCAGTGTCCCTGGCCGAGCAAGCAGCTT  
GGAAGACCTAGTGTGAAGGAAGCGTCCACAGCTGTATCCACCCAGAGGCCAGAGCCTCCATCTCAG  
GAGCAGTGGGCCATCCCTGTGGACGCCACCTCCCTGTTGGTATTCTATCGCCTATTCCCAGCCAG  
CCTTCCAGTGGGCATTTGAGCCAGATGTGTTTCAGAAACAGGCCATCCTGCACTTGGAAACGGCATGACTC  
TGCTTTTGTGCGAGCTCACACATCTGCAGGAAAAACAGTTGTGGTGAATATGCCATTGCCCTGGCCAG  
AAACACATGACACGCACCATCTACACTTCGCCATCAAGGCCCTGAGCAACCAGAAGTCCGGGACTTCC  
GAAACACATTCCGGGATGTGGGGCTGCTACCGGGGATGTACAGCTGCATCCGGAGGCCTCCTGCCTCAT  
CATGACCACAGAGATCCTTCGCTCCATGCTGTACAGTGGCTCAGATGTTATTCGGACCTGGAGTGGGTC  
ATCTTTGATGAGGTTCACTATATCAACGATGTCGAGCGTGGGGTGTGGGAGGAGGTCTTATCATGC  
TACCTGACCACGTTTCTATCATCCTTCTGAGTGCCACCGTCCCCAACGCCCTTGTGTTGCTGACTGGAT  
TGGCGGCTGAAGCGTGTGTCAGATCTATGTGATTAGCACTGTAACCCGCCCGTCCCTGGAGCACTAT



[View online »](#)

CTTTTCACAGGGAACAGCTCCAAGACCCAGGGGAGCTCTTTTGTGGTGGACTCCCGAGGAGCCTTCC  
ATACAAAAGGTTACTATGCAGCTGTGGAGGCCAAGAAGGAGAGAAATGAGCAAACACGCCACAGCCTTTGG  
GGCCAAGCAGCCACACATCAGGGGGCCCTGCACAGGACCGCGGAGTGTACCTGTCCCTCCTGGCCTCC  
CTCCGCACACGTGCCAGTTGCCGTGGTGGTGTTCACCTTCTCCCGGGCCGCTGTGATGAGCAGGCCT  
CAGGCCTCACCTCCCTTGACCTCACCACCAGTTCGGAGAAGAGCGAGATCCACCTTCTCCTGCAGCGCTG  
CCTTGTCTGCCTCCGTGGCTCTGACCGCATCCTGCCATCCTCAAGGAGATCGTGGAGATGCTCTTCAGCCGTG  
GGCTGGGTGTGCACCATAGCGGCATCCTGCCATCCTCAAGGAGATCGTGGAGATGCTCTTCAGCCGTG  
GCCTGGTCAAGGTCTTGTGGCCACAGAGACCTTTGCCATGGGAGTAAACATGCCTGCTCGTACAGTAGT  
GTTTACTCCATGCGCAAACACGATGGCTCCACCTTCCGGGACCTGCTCCCTGGGAGTATGTGCAGATG  
GCAGGCCGGGCGAGGGCGAGGGGCTGGACCCACAGGCACCGTTATCCTGCTCTGCAAGGGCCGAGTGC  
CCGAGATGGCAGACCTGCACCGCATGATGATGGGAAGCCGTCCAGCTGCAGTCCAGTCCGCTCAC  
GTACACTATGATCCTCAACTTGTGCGAGTGGATGCCCTCAGGGTGGAGGACATGATGAAGAGGAGCTTC  
TCTGAGTTTCCCTCCCGCAAAGACAGCAAGGCCATGAACAGGCCCTGGCTGAATGACCAAGAGGCTGG  
GAGCTTTGGAGGAGCCTGACATGACTGGCAACTGGTGCACCTGCCTGAATATTACAGCTGGGGGAGGA  
ACTGACAGAGACCCAGCAGATGATCCAGCGACGCATCATGGAGTCTGTGAACGGGCTGAAGTCTCTCTCA  
GCAGGAAGGGTGGTGGTGTGAAGAATCAGGAGCATCACAAACGATTGGGAGTATCCTACAGGTCTCCT  
CGAACTCCACCAGCAGAGTATTCACAACCTGGTCTTGTGTGATAAGCCCTTGTCCCAGGACCCACAGGA  
CAGGGGGCCAGCCACTGCAGAGGTGCCCTATCCAGATGACCTCGTGGGATTCAAGCTGTTCTGCCTGAA  
GGGCTTGTGACCACACCGTGGTCAAGTCCAGCCAGGAGATATGGTGGCATCACCAAGGTGCTCC  
GGGTGAATGGGGAGAAGATCTTGGAGGACTTCAGCAAGAGGCAGCAGCCAAAATTAAGAAGGATCCTCC  
CCTTGCAGCCGTGACCACTGCTGTCCAGGAACTGCTGCGTCTGGCTCAGGCCACCCAGCCGGACCTCCC  
ACCCTCGACCCTGTCAATGACCTGCAGCTCAAAGATATGTCAGTTGTAGAGGGTGGGCTCCGGGCCCGGA  
AGCTGGAGGAGCTGATCCAGGGGGCTCAGTGTGTACACAGCCCCGTTTTCTGCCAGTACCTGAAGCT  
GCGGGAGCGAATGCAGATACAGAAGGAGATGGAGCGGCTGCGCTTCTACTGTGCGATCAGTCATTGCTG  
CTGCTTCTGAGTACCATCAGCGAGTAGAGGTGCTCCGAACCCTGGGTTACGTGGACGAGGTGGGCACTG  
TGAAGCTGGCAGGGCGGGTGGCTTGTGCCATGAGCAGCCATGAGTTGCTCCTCACTGAGCTCATGTTTGA  
CAATGCACTGAGCACCCTGCGGCCTGAGGAGATTGCTGCCTTGTCTCTGGCCTGGTCTGCCAGAGCCCT  
GGGGACGCTGGGATCAGCTCCCAAACACCCTCAAGCAGGGAATAGAACGTGCCGGCTGTGGCCAAGC  
GGATTGGTGAAGTCCAGGTGGCTTGTGGCCTGAACCAGACGGTGGAGGAATTTGGGGGAGCTGAATTT  
TGGGCTGGTTGAGTTGTATATGAGTGGGCCCGGGCATGCCCTTCTCCGAGTTGGCAGGGCTCTCAGGG  
ACCCCTGAGGGCCTGGTGGTCCGCTGCATTAGCGCCTGGCTGAGATGTGTCGCTACTGCGGGGGCAG  
CCGCCTGGTAGGAGAGCCTGTGCTGGGTGCCAAGATGGAGACAGCGGCTACCTTGTACGCGGGGACAT  
CGTATTTGCGGCCAGCCTCTACCCAG

ACGCGTACGCGGCCGCTCGAGCAGAACTCATCTCAGAAGAGGATCTGGCAGCAAATGATATCCTGGATT  
ACAAGGATGACGACGATAAGGTTAA

Protein Sequence: >RC204893 representing NM\_006929  
 Red=Cloning site Green=Tags(s)

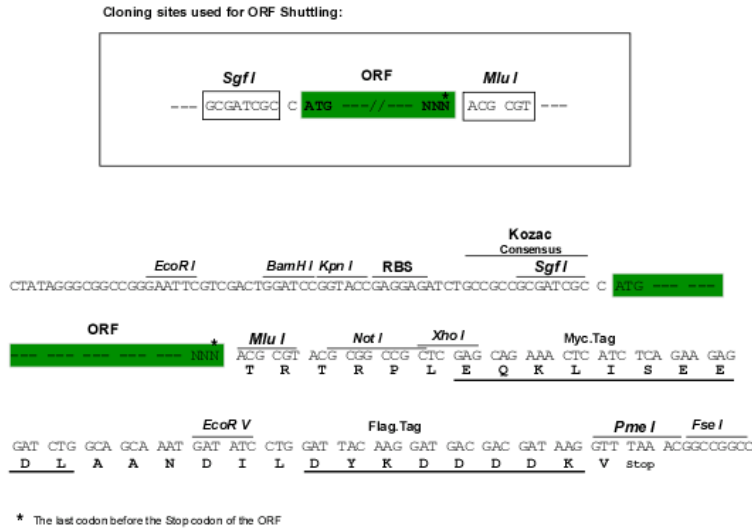
MMETERLVLPPDPDLPLRAVELGCTGHWELLNLPGAPESLPHGLPPCAPDLQQEAEQLFLSSPAWLP  
 LHGVEHSARKWQRKTDPSWLLAVL GAPVPSDLQAQRHPTTGQILGYKEVLLLENTNLSATTSLRPPGP  
 ASQSLWGNPTRYFPWPGGMDPTITDLNTRREEAEEEEIDFEKDLLTIPPGFKKGMDFAPKDCPTAPGLLS  
 LSCLLEPLDLGGDEDENEAVGQPGGPRGDTVSA SPCSA PLARASLEDLVLKEASTAVSTPEAPEPPSQ  
 EQWAIPVDATSPVGFYRLIPQPAFQWAFEPDVFQKQAILHLERHDSVFAAHTSAGKTVVAEYAIALAQ  
 KHMTRTIYTSPIKALSNQKFRDRNTFGDVGLLTGDVQLHPEASCLIMTTEILRSMLYSGSDVIRDLEWV  
 IFDEVHYINDVERGVVWEEVLIMLPDHVSIILLSATVPNALEFADWIGRLKRRQIYVISTVTRPVLEHY  
 LFTGNSSKTQGEFLLLDSRGAFHTKGYAAVEAKKERMSKHAQTFGAKQPTHQGGPAQDRGVYLLSLLAS  
 LRTRAQLPVVVF TFSRGRCEQASGLTSLDLTTSSEKSEIHLFLQRCLARLRGSDRQLPQVLMHSELLNR  
 GLGVHHSGLPILKEIVEMLF SRGLVKVLFATETFAMGVNMPARTVVFDSMRKHDGSTFRDLLPGEYVQM  
 AGRAGRRGLDPTGTVILLCKGRVPEMADLHRMMMGKPSQLQSQFRLTYTMILNLLRVDALRVEDMMKRSF  
 SEFPSRKDSKAHEQAL AELTKRLGAL EEPDMTGQLVDLPEYYSWGEELTETQHMIQRRIMESVNLKSL S  
 AGRVVVKNQEHHNALGVILQVSSNSTSRVFTTLVLC DKPLSQDPQDRGPATAEVPYPDDL VGFKLFLPE  
 GPCDHTVVKLQPGDMAAITTKVLRVNGEKILEDFSKRQQPKFKDPPLAAVTTAVQELLRLAQAHAGPP  
 TLDPVNDLQLKDM SVVEGGLRARKLEELIQGAQCVHSPRFPAYLKLRRMQIQKEMERLRFLLSDQSL L  
 LLPEYHQRVEVLR TLYGVDEVGTVKLAGRVACAMSSHELLL TELMFDNALSTLRPEEIAALLSGLVCQSP  
 GDAGDQLPNTLKQGI ERVRAVAKRIGEVQVACGLNQTVEEFV GELNFGLEVVEYEWARGMPFSELAGLSG  
 TPEGLVVRICIQLAEMCRSLRGAARLVGEPVLGAKMETAATLLRRDIVFAASLYTQ

TRTRPLEQKLISEEDLAANDILDYKDDDDKV

Chromatograms: [https://cdn.origene.com/chromatograms/mg4263\\_a01.zip](https://cdn.origene.com/chromatograms/mg4263_a01.zip)

Restriction Sites: SgfI-MluI

Cloning Scheme:

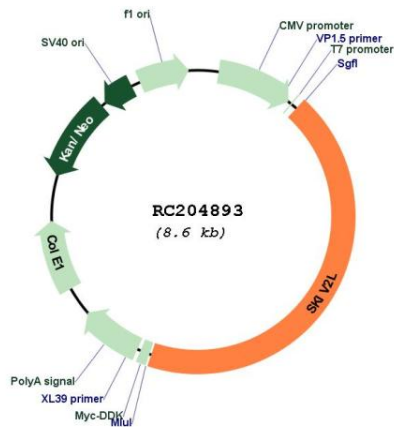


ACCN: NM\_006929

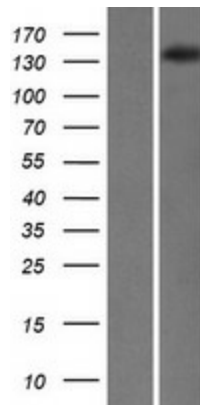
ORF Size: 3738 bp

<b>OTI Disclaimer:</b>	The molecular sequence of this clone aligns with the gene accession number as a point of reference only. However, individual transcript sequences of the same gene can differ through naturally occurring variations (e.g. polymorphisms), each with its own valid existence. This clone is substantially in agreement with the reference, but a complete review of all prevailing variants is recommended prior to use. <a href="#">More info</a>
<b>OTI Annotation:</b>	This clone was engineered to express the complete ORF with an expression tag. Expression varies depending on the nature of the gene.
<b>Components:</b>	The ORF clone is ion-exchange column purified and shipped in a 2D barcoded Matrix tube containing 10ug of transfection-ready, dried plasmid DNA (reconstitute with 100 ul of water).
<b>Reconstitution Method:</b>	<ol style="list-style-type: none"><li>1. Centrifuge at 5,000xg for 5min.</li><li>2. Carefully open the tube and add 100ul of sterile water to dissolve the DNA.</li><li>3. Close the tube and incubate for 10 minutes at room temperature.</li><li>4. Briefly vortex the tube and then do a quick spin (less than 5000xg) to concentrate the liquid at the bottom.</li><li>5. Store the suspended plasmid at -20°C. The DNA is stable for at least one year from date of shipping when stored at -20°C.</li></ol>
<b>RefSeq:</b>	<a href="#">NM_006929.5</a>
<b>RefSeq Size:</b>	4187 bp
<b>RefSeq ORF:</b>	3741 bp
<b>Locus ID:</b>	6499
<b>UniProt ID:</b>	<a href="#">Q15477</a>
<b>Cytogenetics:</b>	6p21.33
<b>Domains:</b>	DEAD, helicase_C
<b>Protein Pathways:</b>	RNA degradation
<b>MW:</b>	137.6 kDa
<b>Gene Summary:</b>	DEAD box proteins, characterized by the conserved motif Asp-Glu-Ala-Asp (DEAD), are putative RNA helicases. They are implicated in a number of cellular processes involving alteration of RNA secondary structure such as translation initiation, nuclear and mitochondrial splicing, and ribosome and spliceosome assembly. Based on their distribution patterns, some members of this family are believed to be involved in embryogenesis, spermatogenesis, and cellular growth and division. This gene encodes a DEAD box protein, which is a human homologue of yeast SKI2 and may be involved in antiviral activity by blocking translation of poly(A) deficient mRNAs. This gene is located in the class III region of the major histocompatibility complex. [provided by RefSeq, Jul 2008]

Product images:



Circular map for RC204893



Western blot validation of overexpression lysate (Cat# [LY416314]) using anti-DDK antibody (Cat# [TA50011-100]). Left: Cell lysates from untransfected HEK293T cells; Right: Cell lysates from HEK293T cells transfected with RC204893 using transfection reagent MegaTran 2.0 (Cat# [TT210002]).