

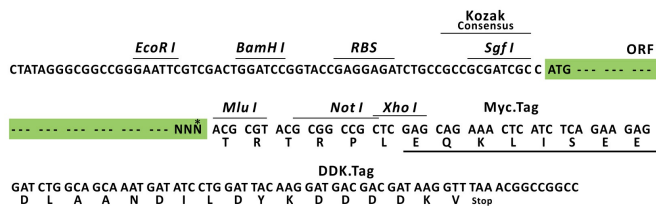
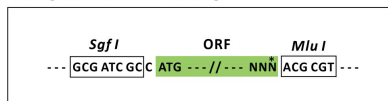
## Product datasheet for RC204891L1

### Deoxyguanosine kinase (DGUOK) (NM\_080916) Human Tagged Lenti ORF Clone

#### Product data:

Product Type:	Expression Plasmids
Product Name:	Deoxyguanosine kinase (DGUOK) (NM_080916) Human Tagged Lenti ORF Clone
Tag:	Myc-DDK
Symbol:	Deoxyguanosine kinase
Synonyms:	dGK; MTDPS3; NCPH; PEOB4
Mammalian Cell Selection:	None
Vector:	pLenti-C-Myc-DDK (PS100064)
E. coli Selection:	Chloramphenicol (34 ug/mL)
ORF Nucleotide Sequence:	The ORF insert of this clone is exactly the same as(RC204891).
Restriction Sites:	SgfI-MluI
Cloning Scheme:	

Cloning sites used for ORF Shuttling:



\* The last codon before the Stop codon of the ORF.

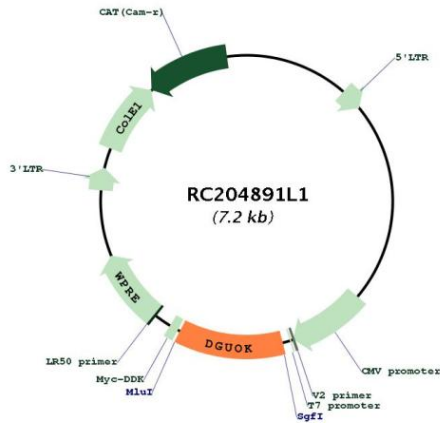
ACCN:	NM_080916
ORF Size:	831 bp



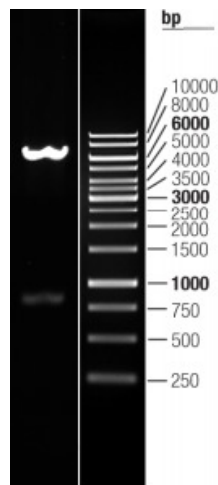
[View online >](#)

<b>OTI Disclaimer:</b>	The molecular sequence of this clone aligns with the gene accession number as a point of reference only. However, individual transcript sequences of the same gene can differ through naturally occurring variations (e.g. polymorphisms), each with its own valid existence. This clone is substantially in agreement with the reference, but a complete review of all prevailing variants is recommended prior to use. <a href="#">More info</a>
<b>OTI Annotation:</b>	This clone was engineered to express the complete ORF with an expression tag. Expression varies depending on the nature of the gene.
<b>Components:</b>	The ORF clone is ion-exchange column purified and shipped in a 2D barcoded Matrix tube containing 10ug of transfection-ready, dried plasmid DNA (reconstitute with 100 ul of water).
<b>Reconstitution Method:</b>	<ol style="list-style-type: none"><li>1. Centrifuge at 5,000xg for 5min.</li><li>2. Carefully open the tube and add 100ul of sterile water to dissolve the DNA.</li><li>3. Close the tube and incubate for 10 minutes at room temperature.</li><li>4. Briefly vortex the tube and then do a quick spin (less than 5000xg) to concentrate the liquid at the bottom.</li><li>5. Store the suspended plasmid at -20°C. The DNA is stable for at least one year from date of shipping when stored at -20°C.</li></ol>
<b>RefSeq:</b>	<a href="#">NM_080916.1</a>
<b>RefSeq Size:</b>	1161 bp
<b>RefSeq ORF:</b>	834 bp
<b>Locus ID:</b>	1716
<b>UniProt ID:</b>	<a href="#">Q16854</a>
<b>Cytogenetics:</b>	2p13.1
<b>Protein Families:</b>	Druggable Genome
<b>Protein Pathways:</b>	Metabolic pathways, Purine metabolism
<b>MW:</b>	32.1 kDa
<b>Gene Summary:</b>	In mammalian cells, the phosphorylation of purine deoxyribonucleosides is mediated predominantly by two deoxyribonucleoside kinases, cytosolic deoxycytidine kinase and mitochondrial deoxyguanosine kinase. The protein encoded by this gene is responsible for phosphorylation of purine deoxyribonucleosides in the mitochondrial matrix. In addition, this protein phosphorylates several purine deoxyribonucleoside analogs used in the treatment of lymphoproliferative disorders, and this phosphorylation is critical for the effectiveness of the analogs. Alternative splice variants encoding different protein isoforms have been described for this gene. [provided by RefSeq, Jul 2008]

Product images:



Circular map for RC204891L1



Double digestion of RC204891L1 using SgfI and MluI