

Product datasheet for **RC204890**

Properdin (CFP) (NM_002621) Human Tagged ORF Clone

Product data:

Product Type:	Expression Plasmids
Product Name:	Properdin (CFP) (NM_002621) Human Tagged ORF Clone
Tag:	Myc-DDK
Symbol:	Properdin
Synonyms:	BFD; PFC; PFD; PROPERDIN
Mammalian Cell Selection:	Neomycin
Vector:	pCMV6-Entry (PS100001)
E. coli Selection:	Kanamycin (25 ug/mL)



[View online »](#)

ORF Nucleotide Sequence:

>RC204890 ORF sequence
 Red=Cloning site Blue=ORF Green=Tags(s)

TTTTGTAATACGACTCACTATAGGGCGGCCGGAATTCGTCGACTGGATCCGGTACCGAGGAGATCTGCC
 GCC**CGGATCGCC**

ATGATCACAGAGGGAGCGCAGGCCCTCGATTGTTGCTGCCGCCGCTGCTCCTGCTGCTCACCTGCCAG
 CCACAGGCTCAGACCCCTGCTCTGCTTACCCAGTATGAAGAATCCTCCGGCAAGTGCAAGGGCCTCCT
 GGGGGTGGTGTACGCTGGAAGACTGCTGTCTCAACTGCCTTTGCCTACCAGAAACGTAGTGGTGGG
 CTCTGTGACGCTTGCAGGTCCCCACGATGGTCCCTTTGGTCCACATGGGCCCTGTTCCGGTACGCTGCT
 CTGAGGGCTCCCAGTGCAGTACCGGCGCTGTGTGGGCTGGAATGGGCAGTGTCTGAAAGGTGGCACC
 TGGGACCCTGGAGTGGCAGTCCAGGCTGTGAGGACCAGCAGTGTCTGCTGAGATGGGCGCTGGTCT
 GGCTGGGGCCCTGGGAGCCTTGTCTGTACCTGCTCCAAGGGACCCGGACCCGAGCGAGCCTGTA
 ATCACCTGCTCCAAGTGTGGGGCCACTGCCAGGACAGGCACAGGAATCAGAGGCTGTGACACCCA
 GCAGTCTGCCCCACACGGGGCTGGGCCACTGGGGCCCTGGACCCCTGCTCAGCCTCCTGCCAC
 GGTGGACCCACGAACCTAAGGAGACACGAAGCCGAAGTGTCTGCACCTGAGCCCTCCAGAAACCTC
 CTGGGAAGCCCTGCCCGGGCTAGCCTACGAGCAGCGGAGGTGCACCGGCTGCCACCCTGCCAGTGGC
 TGGGGCTGGGGCCCTGGGGCCCTGTGAGCCCTGCCCTGTGACCTGTGGCCTGGGCCAGACCATGGAA
 CAACGGACGTGCAATCACCTGTGCCACGATGGGGGCCCTTCTGTGCTGGGATGCCACCCGGACCC
 ACATCTGCAACACAGTGTGCCCTGCCCTGTGGATGGGGAGTGGGACTCGTGGGGGAGTGGAGCCCTG
 TATCCGACGGAACATGAAGTCCATCAGTGTCAAGAAATCCCGGGCCAGCAGTACGCGGGAGGACTGC
 AGGGCCGCAAGTTTGACGGACATCGATGTGCCGGCAACAGCAGGATATCCGGCACTGTACAGCATCC
 AGCACTGCCCTTGAAAGGATCATGGTCAAGTGGAGTACCTGGGGCTGTGCATGCCCCCTGTGGACC
 TAATCCTACCCGTGCCCGCAGCGCCTCTGCACACCCTTGTCTCCCAAGTACCCGCCACCGTTTCCATG
 GTCGAAGTCAAGGCGAGAAACGTCACCTTCTGGGGGAGACCCTGCCACGGTGTGAGGAGCTACAAG
 GGCAGAAGCTGGTGGAGGAGAAACGACCATGTCTACAGTGCCTGCTGCAAAGACCCTGAGGAAGA
 GGAATC

ACGCGTACGCGGCCGCTCGAGCAGAAACTCATCTCAGAAGAGGATCTGGCAGCAAATGATATCCTGGATT
 ACAAGGATGACGACGATAAGGTTTAA

Protein Sequence:

>RC204890 protein sequence
 Red=Cloning site Green=Tags(s)

MITEGAQAPRLLLPLLLLLLTLPATGSDPVLCTFYEESSGKCKGLLGGVSVEDCLNTAFAYQKRSGG
 LCQPCRSRWSLWSTWAPCSVTCSEGSQLYRRCVGNWQCSGKVPAGTLEWQLQACEDQCCPEMGGWS
 GWGPWEPCSVTCSKGTRRRRACNHPAPKCGGHCPGQAQSEACDTQVCPHGWATWGPWTPCSASCH
 GGPHEPKETRSRKCSAPEPSQKPPGKPCPLAYEQRRCTGLPPCPVAGGWGPVSPCPVTCGLGQTM
 QRTCNHVPVQHGGPFCAAGDATHICNTAVPCPVDGEWDSWGEWSPCIRRNMKSI SCQEIPGQSRGRTC
 RGRKFDGHRCAQQQDIRHCYSIQHCPKGSWSEWSTWGLCMPPCGPNPTRARQRLCTPLLPKYPTVSM
 VEGQGEKNVTFWGRPLRCEELQGQKLVEEKRPCLHVPACKDPEEEEL

TRTRPLEQKLISEEDLAANDILDYKDDDDKV

Chromatograms:

https://cdn.origene.com/chromatograms/mk6175_h01.zip

Restriction Sites:

Sgfl-Mlul

Cloning Scheme:


ACCN: NM_002621

ORF Size: 1407 bp

OTI Disclaimer: The molecular sequence of this clone aligns with the gene accession number as a point of reference only. However, individual transcript sequences of the same gene can differ through naturally occurring variations (e.g. polymorphisms), each with its own valid existence. This clone is substantially in agreement with the reference, but a complete review of all prevailing variants is recommended prior to use. [More info](#)

OTI Annotation: This clone was engineered to express the complete ORF with an expression tag. Expression varies depending on the nature of the gene.

Components: The ORF clone is ion-exchange column purified and shipped in a 2D barcoded Matrix tube containing 10ug of transfection-ready, dried plasmid DNA (reconstitute with 100 ul of water).

Reconstitution Method:

1. Centrifuge at 5,000xg for 5min.
2. Carefully open the tube and add 100ul of sterile water to dissolve the DNA.
3. Close the tube and incubate for 10 minutes at room temperature.
4. Briefly vortex the tube and then do a quick spin (less than 5000xg) to concentrate the liquid at the bottom.
5. Store the suspended plasmid at -20°C. The DNA is stable for at least one year from date of shipping when stored at -20°C.

RefSeq: [NM_002621.2](#)

RefSeq Size: 1785 bp

RefSeq ORF: 1410 bp

Locus ID: 5199

UniProt ID: [P27918](#)

Cytogenetics: Xp11.23

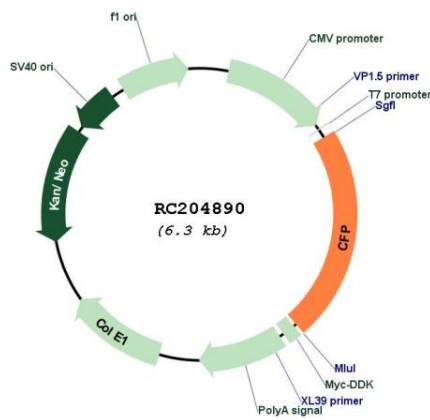
Domains: tsp_1

Protein Families: Secreted Protein

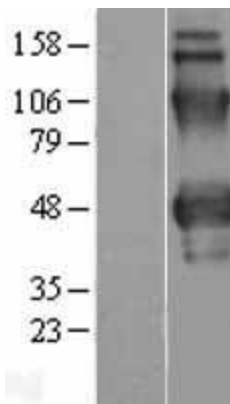
MW: 51.3 kDa

Gene Summary: This gene encodes a plasma glycoprotein that positively regulates the alternative complement pathway of the innate immune system. This protein binds to many microbial surfaces and apoptotic cells and stabilizes the C3- and C5-convertase enzyme complexes in a feedback loop that ultimately leads to formation of the membrane attack complex and lysis of the target cell. Mutations in this gene result in two forms of properdin deficiency, which results in high susceptibility to meningococcal infections. Multiple alternatively spliced variants, encoding the same protein, have been identified.[provided by RefSeq, Feb 2009]

Product images:



Circular map for RC204890



Western blot validation of overexpression lysate (Cat# [LY428763]) using anti-DDK antibody (Cat# [TA50011-100]). Left: Cell lysates from untransfected HEK293T cells; Right: Cell lysates from HEK293T cells transfected with [RC227711] using transfection reagent MegaTran 2.0 (Cat# [TT210002]).