

## Product datasheet for **RC204887**

### EDG6 (S1PR4) (NM\_003775) Human Tagged ORF Clone

#### Product data:

Product Type:	Expression Plasmids
Product Name:	EDG6 (S1PR4) (NM_003775) Human Tagged ORF Clone
Tag:	Myc-DDK
Symbol:	EDG6
Synonyms:	EDG6; LPC1; S1P4; SLP4
Mammalian Cell Selection:	Neomycin
Vector:	pCMV6-Entry (PS100001)
E. coli Selection:	Kanamycin (25 ug/mL)
ORF Nucleotide Sequence:	>RC204887 ORF sequence Red=Cloning site Blue=ORF Green=Tags(s)

TTTTGTAATACGACTCACTATAGGGCGGCCGGAATTCGTCGACTGGATCCGGTACCGAGGAGATCTGCC  
GCC**CGATCGCC**

ATGAACGCCACGGGGACCCCGGTGGCCCCGAGTCTGCCAACAGCTGGCGGGCGGGCCAGCCGGC  
TCATTGTTCTGCACTACAACCACTCGGGCCGGCTGGCCGGGCGCGGGGGCCGGAGGATGGCGGCCTGGG  
GGCCCTGCGGGGGCTGTCGGTGGCCGACGCTGCCTGGTGGTGTGGAGAACTTGTGGTGTGGCGGCC  
ATCACCAGCCACATGCGGTGCGACGCTGGGTCTACTATTGCCTGGTGAACATCACGCTGAGTGACCTGC  
TCACGGGCGCGGCTACCTGGCCAACGTGCTGCTGTCGGGGCCCGCACCTTCCGTCTGGCGCCGCCCA  
GTGGTTCCCTACGGGAGGGCTGCTCTTACCGCCCTGGCCGCTCCACCTTCAGCCTGCTTCACTGCA  
GGGAGCGCTTTGCCACCATGGTGC GGCCGGTGGCCGAGAGCGGGGCCACCAAGACCAGCCGCTACG  
GCTTTCATCGCCCTCTGCTGGTGTGGCCGCGTGTGGGGATGCTGCCTTTGCTGGGCTGGAAGTGCCT  
GTGCGCCTTTGACCGCTGCTCCAGCCTTCTGCCCTCTACTCCAAGCGCTACATCCTCTTCTGCCTGGT  
ATCTTCGCGCGCTCTGGCCACCATCATGGCCCTCTATGGGGCCATCTTCCGCTGGTGCAGGCCAGCG  
GGCAGAAGGCCCCACGCCAGCGCCCGCCGCAAGGCCCGCCGCTGTGAAGACGGTGTGATGATCCT  
GCTGGCCTTCTGGTGTGCTGGGGCCACTTTCGGGCTGCTGCTGGCCGACGCTTTGGCTCCAACCTC  
TGGGCCAGGAGTACCTCGGGGCATGGACTGGATCCTGGCCCTGGCCGCTCAACTCGCGGGTCAACC  
CCATCATCTACTCTTCCGAGCAGGGAGGTGTGAGAGCCGTGCTCAGCTTCTCTGCTGCGGGTGTCT  
CCGGCTGGGATGCGAGGGCCCGGGACTGCTGGCCCGGGCCGTCGAGGCTCACTCCGGAGCTTCCACC  
ACCGACAGCTCTGAGGCCAAGGGACAGCTTTCGCGGCTCCCGCTCGCTCAGCTTTCGGATGCGGGAGC  
CCTGTCCAGCATCTCCAGCGTGC GGAGCATC

**ACGCGT**ACGCGGCCGCTCGAGCAGAACTCATCTCAGAAGAGGATCTGGCAGCAAATGATATCCTGGATT  
ACAAGGATGACGACGATAAGGTTTAA



[View online >](#)

**Protein Sequence:** >RC204887 protein sequence  
Red=Cloning site Green=Tags(s)

MNATGTPVAPESCQQLAAGGHSRLIVLHYNHSGRLAGRGGPEDGGLGALRGLSVAASCLVLENLLVLA  
 ITSHMRSRRWVYCLVNIITLSDLLTGAAYLANVLLSGARTFRLAPAQWFLREGLLFTALAASTFSLFFTA  
 GERFATMVRPVAESGATKTSRVYGFILGCWLLAALLGMLPLLGNWCLCAFDRCSLLPLYSKRYILFCLV  
 IFAGVLATIMGLYGAIIFRLVQASGQKAPRPAARRKARRLLKTVLMILLAFVLCWGPLFGLLLADVFGSNL  
 WAQEYLRGMDWILALAVLNSAVNP IIYSFRSREVCRAVLSFLCCGCLRLGMRGPGDCLARAVEAHSGAST  
 TDSSLRPRDSFRGSRSL SFRMREPLSSISSVRSI

TRTRPLEQKLISEEDLAANDILDYKDDDDKV

**Chromatograms:** [https://cdn.origene.com/chromatograms/mk6175\\_g11.zip](https://cdn.origene.com/chromatograms/mk6175_g11.zip)

**Restriction Sites:** SgfI-MluI

**Cloning Scheme:**

Cloning sites used for ORF Shuttling:



\* The last codon before the Stop codon of the ORF

**ACCN:** NM\_003775

**ORF Size:** 1152 bp

**OTI Disclaimer:** The molecular sequence of this clone aligns with the gene accession number as a point of reference only. However, individual transcript sequences of the same gene can differ through naturally occurring variations (e.g. polymorphisms), each with its own valid existence. This clone is substantially in agreement with the reference, but a complete review of all prevailing variants is recommended prior to use. [More info](#)

**OTI Annotation:** This clone was engineered to express the complete ORF with an expression tag. Expression varies depending on the nature of the gene.

**Components:** The ORF clone is ion-exchange column purified and shipped in a 2D barcoded Matrix tube containing 10ug of transfection-ready, dried plasmid DNA (reconstitute with 100 ul of water).

**Reconstitution Method:**

1. Centrifuge at 5,000xg for 5min.
2. Carefully open the tube and add 100ul of sterile water to dissolve the DNA.
3. Close the tube and incubate for 10 minutes at room temperature.
4. Briefly vortex the tube and then do a quick spin (less than 5000xg) to concentrate the liquid at the bottom.
5. Store the suspended plasmid at -20°C. The DNA is stable for at least one year from date of shipping when stored at -20°C.

**RefSeq:** [NM\\_003775.4](#)

**RefSeq Size:** 1612 bp

**RefSeq ORF:** 1155 bp

**Locus ID:** 8698

**UniProt ID:** [O95977](#)

**Cytogenetics:** 19p13.3

**Domains:** 7tm\_1

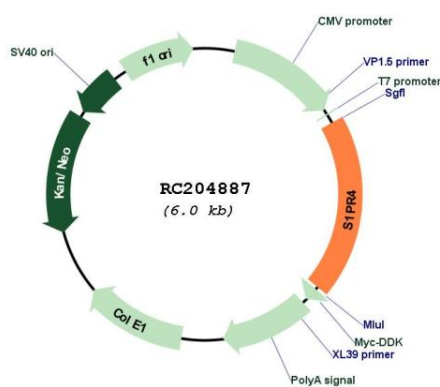
**Protein Families:** Druggable Genome, GPCR, Transmembrane

**Protein Pathways:** Neuroactive ligand-receptor interaction

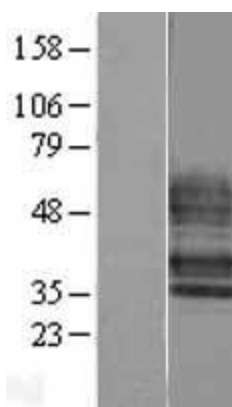
**MW:** 41.6 kDa

**Gene Summary:** This gene is a member of the endothelial differentiation, G-protein-coupled (EDG)) receptor gene family. EDG receptors bind lysophospholipids or lysosphingolipids as ligands, and are involved in cell signalling in many different cell types. This EDG receptor gene is intronless and is specifically expressed in the lymphoid tissue. [provided by RefSeq, Jul 2008]

## Product images:



Circular map for RC204887



Western blot validation of overexpression lysate (Cat# [LY401243]) using anti-DDK antibody (Cat# [TA50011-100]). Left: Cell lysates from untransfected HEK293T cells; Right: Cell lysates from HEK293T cells transfected with RC204887 using transfection reagent MegaTran 2.0 (Cat# [TT210002]).