

Product datasheet for **RC204877**

GRO beta (CXCL2) (NM_002089) Human Tagged ORF Clone

Product data:

Product Type: Expression Plasmids
Product Name: GRO beta (CXCL2) (NM_002089) Human Tagged ORF Clone
Tag: Myc-DDK
Symbol: GRO beta
Synonyms: CINC-2a; GRO2; GROb; MGSA-b; MIP-2a; MIP2; MIP2A; SCYB2
Mammalian Cell Selection: Neomycin
Vector: pCMV6-Entry (PS100001)
E. coli Selection: Kanamycin (25 ug/mL)
ORF Nucleotide Sequence: >RC204877 ORF sequence
 Red=Cloning site Blue=ORF Green=Tags(s)

TTTTGTAATACGACTCACTATAGGGCGCCGGGAATTCGTCGACTGGATCCGGTACCGAGGAGATCTGCC
 GCC**CGATCGCC**

ATGGCCCCGCCACGCTCTCCGCCCCCCAGCAATCCCCGGCTCCTGCGGGTGGCGCTGCTGCTCCTGC
 TCCTGGTGGCCGCGAGCCGGCGCGCAGCAGGAGCGCCCTGGCCACTGAACTGCGCTGCCAGTGCTTGCA
 GACCCTGCAGGGAATCACCTCAAGAACATCAAAGTGTGAAGGTGAAGTCCCCGGACCCACTGCGCC
 CAAACCGAAGTCATAGCCACACTCAAGAATGGCAGAAAGCTTGTCTCAACCCCGCATCGCCCATGGTTA
 AGAAAATCATCGAAAAGATGCTGAAAAATGGCAAATCCAAC

ACGCGTACGCGGCCGCTCGAGCAGAAACTCATCTCAGAAGAGGATCTGGCAGCAAATGATATCCTGGATT
 ACAAGGATGACGACGATAAGGTTTAA

Protein Sequence: >RC204877 protein sequence
 Red=Cloning site Green=Tags(s)
 MARATLSAAPSNPRLLRVALLLLLLVAASRRRAAGAPLATELRCQCLQTLQGIHLKNIQSVKVKSPGPHCA
 QTEVIATLKNQKACLNPASPMVKKIIIEKMLKNGKSN

TRTRPLEQKLISEEDLAANDILDYKDDDDKV

Chromatograms: https://cdn.origene.com/chromatograms/mk6062_h01.zip

Restriction Sites: SgfI-MluI



[View online »](#)

Cloning Scheme:


ACCN: NM_002089

ORF Size: 321 bp

OTI Disclaimer: The molecular sequence of this clone aligns with the gene accession number as a point of reference only. However, individual transcript sequences of the same gene can differ through naturally occurring variations (e.g. polymorphisms), each with its own valid existence. This clone is substantially in agreement with the reference, but a complete review of all prevailing variants is recommended prior to use. [More info](#)

OTI Annotation: This clone was engineered to express the complete ORF with an expression tag. Expression varies depending on the nature of the gene.

Components: The ORF clone is ion-exchange column purified and shipped in a 2D barcoded Matrix tube containing 10ug of transfection-ready, dried plasmid DNA (reconstitute with 100 ul of water).

- Reconstitution Method:**
1. Centrifuge at 5,000xg for 5min.
 2. Carefully open the tube and add 100ul of sterile water to dissolve the DNA.
 3. Close the tube and incubate for 10 minutes at room temperature.
 4. Briefly vortex the tube and then do a quick spin (less than 5000xg) to concentrate the liquid at the bottom.
 5. Store the suspended plasmid at -20°C. The DNA is stable for at least one year from date of shipping when stored at -20°C.

RefSeq: [NM_002089.4](#)

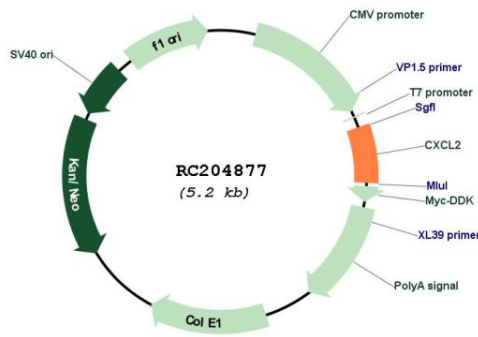
RefSeq Size: 1234 bp

RefSeq ORF: 324 bp

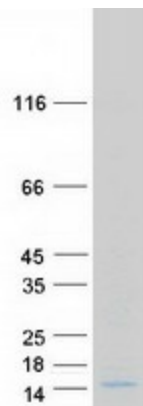
Locus ID: 2920

UniProt ID:	P19875
Cytogenetics:	4q13.3
Domains:	IL8
Protein Families:	Druggable Genome, Secreted Protein
Protein Pathways:	Chemokine signaling pathway, Cytokine-cytokine receptor interaction, NOD-like receptor signaling pathway
MW:	11.4 kDa
Gene Summary:	This antimicrobial gene is part of a chemokine superfamily that encodes secreted proteins involved in immunoregulatory and inflammatory processes. The superfamily is divided into four subfamilies based on the arrangement of the N-terminal cysteine residues of the mature peptide. This chemokine, a member of the CXC subfamily, is expressed at sites of inflammation and may suppress hematopoietic progenitor cell proliferation. [provided by RefSeq, Sep 2014]

Product images:



Circular map for RC204877



Coomassie blue staining of purified CXCL2 protein (Cat# [TP304877]). The protein was produced from HEK293T cells transfected with CXCL2 cDNA clone (Cat# RC204877) using MegaTran 2.0 (Cat# [TT210002]).