

Product datasheet for **RC204876**

MUM1 (IRF4) (NM_002460) Human Tagged ORF Clone

Product data:

Product Type:	Expression Plasmids
Product Name:	MUM1 (IRF4) (NM_002460) Human Tagged ORF Clone
Tag:	Myc-DDK
Symbol:	MUM1
Synonyms:	LSIRF; MUM1; NF-EM5; SHEP8
Mammalian Cell Selection:	Neomycin
Vector:	pCMV6-Entry (PS100001)
E. coli Selection:	Kanamycin (25 ug/mL)



[View online »](#)

ORF Nucleotide Sequence:

>RC204876 ORF sequence
 Red=Cloning site Blue=ORF Green=Tags(s)

TTTTGTAATACGACTCACTATAGGGCGGCCGGGAATTCGTCGACTGGATCCGGTACCGAGGAGATCTGCC
 GCCGCGATCGCC

ATGAACCTGGAGGCGGCCGAGGCGGAGAGTTCGGCATGAGCGCGGTGAGCTGCGGCAACGGGAAGC
 TCCGCCAGTGGCTGATCGACCAGATCGACAGCGCAAGTACCCCGGCTGGTGTGGGAGAACGAGGAGAA
 GAGCATCTCCGCATCCCTGGAAGCACGCGGCAAGCAGGACTACAACCGCAGGAGGACGCGCGCTC
 TTCAAGGCTTGGGCACTGTTAAAGGAAAGTTCGAGAAGGCATCGACAAGCCGACCTCCACCTGGA
 AGACGCGCTGCGGTGCGCTTTGAACAAGGCAATGACTTTGAGGAACTGGTTGAGCGGAGCCAGCTGGA
 CATCTCAGACCCGTACAAAGTGTACAGGATTGTTCTGAGGGAGCCAAAAAGGACCAAGCAGCTCACC
 TTGGAGGACCCGAGATGTCATGAGCCACCCCTACACCATGACAACGCCTTACCCTTCGCTCCCAGCCC
 AGCAGGTTCAACTACATGATGCCACCCCTCGACCGAAGCTGGAGGGACTACGTCGCGGATCAGCCACA
 CCCGGAATCCCGTACCAATGTCCATGACGTTTGGACCCGCGGCCACCACTGGCAAGGCCAGCTTGT
 GAAAATGGTTGCCAGGTGACAGGAACCTTTTATGCTTGTGCCCCACCTGAGTCCCAGGCTCCCGGAGTCC
 CCACAGAGCCAAGCATAAAGTCTGCCGAAGCCTTGGCGTTCTCAGACTGCCGGCTGCACATCTGCCTGTA
 CTACCGGGAATCCTCGTGAAGGAGCTGACCACGTCCAGCCCCGAGGGCTGCCGGATCTCCCATGGACAT
 ACGTATGACGCCAGCAACCTGGACCAGTCTGTTCCCTACCCAGAGGACAATGGCCAGAGGAAAAACA
 TTGAGAAGCTGCTGAGCCACCTGGAGAGGGCGTGGTCTCTGGATGGCCCCGACGGGCTCTATGCGAA
 AAGACTGTGCCAGAGCAGGATCTACTGGACGGGCCCCGGCGCTGTGCAACGACCGGCCAACAAACTG
 GAGAGAGACCAGCTGCAAGCTCTTGGACACACAGCAGTCTTGTGAGAGCTGCAAGCCTTTCAGCCCTCAG
 ACGGCCGCTCCCTGCCAAGATTCAGGTGACTCTATGCTTTGGAGAGGAGTTTCCAGACCTCAGAGCA
 AAGAAAAGCTCATCACAGCTCACGTAGAACCCTCTGCTAGCCAGACAATATATTATTTGCTCAACAAAAC
 AGTGGACATTTCTGAGGGGCTACGATTTACCAGAACACATCAGCAATCCAGAAGATTACCACAGATCTA
 TCCGCCATTCTCTATTCAAGAA

ACGCGTACGCGGCCGCTCGAGCAGAACTCATCTCAGAAGAGGATCTGGCAGCAAATGATATCTGGATT
 ACAAGGATGACGACGATAAGGTTTAA

Protein Sequence:

>RC204876 protein sequence
 Red=Cloning site Green=Tags(s)

MNLEGGGRGGEFGMSAVSCGNGKLRQWLIDQIDSGKYPGLVWENEKSIIFRIPWKHAGKQDYNREEDAAL
 FKAWALFKGKREGIDKDPPTWKTRLRCALNKSNDFEELVERSQLDISDPYKVYRIVPEGAKKGAKQLT
 LEDPQMSMSHPYTMTPYPSLPAQQVHNYMPPPLDRSWRDYVPDQPHPEIPYQCPMTFGPRGHHWQGPAC
 ENGCVTGTFFYACAPPESQAPGVPTPEPSIRSAEALAFSDCRLHICLYREILVKELTSSPEGCRISHGH
 TYDASNLQVLFYPEDNGQRKNIKLLSHLERGVVLMAPDGLYAKRLCQSRIYWDGPLALCNDRPNKL
 ERDQTKLFDLQQLSELQAFHHGRSLPRFQVTLCFGEEFPDPQRQRKLITAHVEPLLARQLYFAQQN
 SGHFLRGYDLPEHISNPEDYHRSIRHSSIQE

TRTRPLEQKLISEEDLAANDILDYKDDDDKV

Chromatograms:

https://cdn.origene.com/chromatograms/mk6580_a08.zip

Restriction Sites:

Sgfl-MluI

Cloning Scheme:


ACCN: NM_002460

ORF Size: 1353 bp

OTI Disclaimer: The molecular sequence of this clone aligns with the gene accession number as a point of reference only. However, individual transcript sequences of the same gene can differ through naturally occurring variations (e.g. polymorphisms), each with its own valid existence. This clone is substantially in agreement with the reference, but a complete review of all prevailing variants is recommended prior to use. [More info](#)

OTI Annotation: This clone was engineered to express the complete ORF with an expression tag. Expression varies depending on the nature of the gene.

Components: The ORF clone is ion-exchange column purified and shipped in a 2D barcoded Matrix tube containing 10ug of transfection-ready, dried plasmid DNA (reconstitute with 100 ul of water).

Reconstitution Method:

1. Centrifuge at 5,000xg for 5min.
2. Carefully open the tube and add 100ul of sterile water to dissolve the DNA.
3. Close the tube and incubate for 10 minutes at room temperature.
4. Briefly vortex the tube and then do a quick spin (less than 5000xg) to concentrate the liquid at the bottom.
5. Store the suspended plasmid at -20°C. The DNA is stable for at least one year from date of shipping when stored at -20°C.

Note: Plasmids are not sterile. For experiments where strict sterility is required, filtration with 0.22um filter is required.

RefSeq: [NM_002460.4](#)

RefSeq Size: 5332 bp

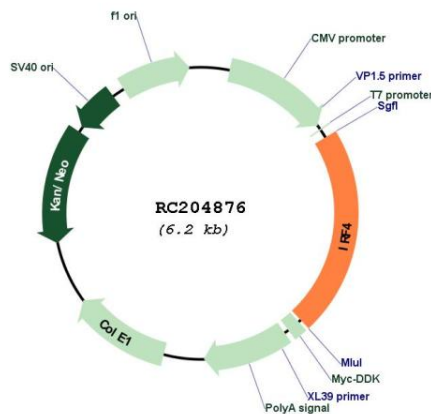
RefSeq ORF: 1356 bp

Locus ID: 3662

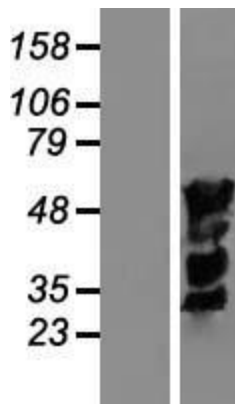
UniProt ID: [Q15306](#)
Cytogenetics: 6p25.3
Protein Families: Druggable Genome, Transcription Factors
MW: 51.8 kDa

Gene Summary: The protein encoded by this gene belongs to the IRF (interferon regulatory factor) family of transcription factors, characterized by a unique tryptophan pentad repeat DNA-binding domain. The IRFs are important in the regulation of interferons in response to infection by virus, and in the regulation of interferon-inducible genes. This family member is lymphocyte specific and negatively regulates Toll-like-receptor (TLR) signaling that is central to the activation of innate and adaptive immune systems. A chromosomal translocation involving this gene and the IgH locus, t(6;14)(p25;q32), may be a cause of multiple myeloma. Alternatively spliced transcript variants have been found for this gene. [provided by RefSeq, Aug 2010]

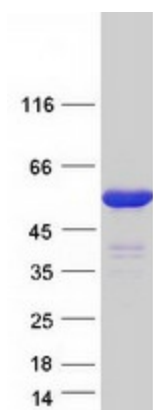
Product images:



Circular map for RC204876



Western blot validation of overexpression lysate (Cat# [LY419304]) using anti-DDK antibody (Cat# [TA50011-100]). Left: Cell lysates from untransfected HEK293T cells; Right: Cell lysates from HEK293T cells transfected with RC204876 using transfection reagent MegaTran 2.0 (Cat# [TT210002]).



Coomassie blue staining of purified IRF4 protein (Cat# [TP304876]). The protein was produced from HEK293T cells transfected with IRF4 cDNA clone (Cat# RC204876) using MegaTran 2.0 (Cat# [TT210002]).