

Product datasheet for RC204875

PPP2R5C (NM_178588) Human Tagged ORF Clone

Product data:

Product Type:	Expression Plasmids
Product Name:	PPP2R5C (NM_178588) Human Tagged ORF Clone
Tag:	Myc-DDK
Symbol:	PPP2R5C
Synonyms:	B56G; MGC23064; PR61G
Mammalian Cell Selection:	Neomycin
Vector:	pCMV6-Entry (PS100001)
E. coli Selection:	Kanamycin (25 ug/mL)
ORF Nucleotide Sequence:	>RC204875 ORF sequence Red=Cloning site Blue=ORF Green=Tags(s)

TTTTGTAATACGACTCACTATAGGGCGGCCGGAATTCGTCGACTGGATCCGGTACCGAGGAGATCTGCC
GCC**CGGATCGCC**

ATGTTGACATGTAATAAAGCGGGCAGCAGGATGGTGGTGGATGCGGCCAACTCCAATGGGCCTTTCCAGC
CCGTGGTCTTCCATATTCGAGATGTTCTCTGCTGATCAAGAGAAGCTTTTATCCAGAAGTTACG
TCAGTGTTCGCTCTTTGACTTTGTTTCTGATCCACTAAGTGACCTAAAGTGAAGGAAGTAAAACGA
GCTGCTTAAGTAAAATGGTGAATATATCACCCATAATCGGAATGTGATCACAGAGCCTATTTACCCAG
AAGTAGCCATATGTTTGCAGTTAACATGTTTGAACATTACCACCTTCTCCAATCCTACGGGAGCGGA
ATTTGACCCGGAGGAAGATGAACCAACGTTAGAAGCAGCCTGGCCTCATCTACAGCTTGTATGAATTT
TTCTTAAGATTTTAGAGTCTCCAGATTTCCAACCTAATATAGCGAAGAAATATATTGATCAGAAGTTG
TATTGCAGCTTTTAGAGCTTTTACAGTGAAGATCCTCGGGAGAGAGATTTTCTAAAACCACCCTTCA
CAGAATCTATGGGAAATCCTAGGCTTGAGAGCTTACATCAGAAAACAGATAAATAATATATTTTATAGG
TTTATTTATGAAACAGAGCATATAATGGCATAGCAGAGTTACTGGAAATATTGGGAAGTATAATTAATG
GATTTGCCTTACCACTAAAAGAAGAGCACAAGATTTTCTATTGAAGGTGTTACTACCTTGCACAAAGT
GAAATCTCTGAGTGTCTACCATCCCCAGCTGGCATACTGTGTAGTGCAGTTTTAGAAAAGGACAGCACC
CTCAGGAACCAAGTGGTATGGCACTTCTCAAATACTGGCCAAAGACTCACAGTCCAAAAGAAGTAATGT
TCTTAAACGAATTAGAAGAGATTTTAGATGTCTTGAACCATCAGAATTTGTGAAGATCATGGAACCCCT
CTTCCGGCAGTTGGCCAAATGTGTCTCCAGCCCACTTCCAGGTGGCAGAGCGAGCTCTTATTACTGG
AATAATGAATACATCATGAGTTAATCAGTGACAACGCAGCGAAGATTCTGCCATCATGTTTCTTCTCT
TGTACCGCAACTCAAAGACCCATTGGAACAAG

ACGCGTACGCGGCCGCTCGAGCAGAACTCATCTCAGAAGAGGATCTGGCAGCAAATGATATCCTGGATT
ACAAGGATGACGACGATAAGGTTTAA



[View online »](#)

Protein Sequence: >RC204875 protein sequence
Red=Cloning site Green=Tags(s)

MLTCNKAGSRMVDAANSNGPFQPVVLLHIRDVPPADQEKLFIQKLRQCCVLDFVSDPLSDLKWKEVKR
 AALSEMVEYITHNRNVIETPIYPEVVMFAVNMFR TLPPSSNPTGAEFDPEDEPTLEAAWPHLQLVVEF
 FLRFLESPDFQPNI AKKYIDQKFVLQLELFDSEDPREDFLKTTLHRIY GKFLGLRAYIRKQINNIFYR
 FIYETEHNGIAELLEILGSIINGFALPLKEEHKIFLLKVLPLHKVKLSVYHPQLAYCVVQFLEKDST
 LTEPVVMALLKYWPKTHSPKVMFLNELEEILDVIEPSEFVKIMEPLFRQLAKCVSSPHFQVAERALYYW
 NNEYIMSLISDNAAKILPIMFPSLYRNSKTHWNK

TRTRPLEQKLISEEDLAANDILDYKDDDDKV

Chromatograms: https://cdn.origene.com/chromatograms/mk6673_b06.zip

Restriction Sites: SgfI-MluI

Cloning Scheme:



ACCN: NM_178588

ORF Size: 1152 bp

OTI Disclaimer: The molecular sequence of this clone aligns with the gene accession number as a point of reference only. However, individual transcript sequences of the same gene can differ through naturally occurring variations (e.g. polymorphisms), each with its own valid existence. This clone is substantially in agreement with the reference, but a complete review of all prevailing variants is recommended prior to use. [More info](#)

OTI Annotation: This clone was engineered to express the complete ORF with an expression tag. Expression varies depending on the nature of the gene.

Components: The ORF clone is ion-exchange column purified and shipped in a 2D barcoded Matrix tube containing 10ug of transfection-ready, dried plasmid DNA (reconstitute with 100 ul of water).

Reconstitution Method:

1. Centrifuge at 5,000xg for 5min.
2. Carefully open the tube and add 100ul of sterile water to dissolve the DNA.
3. Close the tube and incubate for 10 minutes at room temperature.
4. Briefly vortex the tube and then do a quick spin (less than 5000xg) to concentrate the liquid at the bottom.
5. Store the suspended plasmid at -20°C. The DNA is stable for at least one year from date of shipping when stored at -20°C.

Note: Plasmids are not sterile. For experiments where strict sterility is required, filtration with 0.22um filter is required.

RefSeq: [NM_178588.1](#), [NP_848703.1](#)

RefSeq Size: 1460 bp

RefSeq ORF: 1154 bp

Locus ID: 5527

Cytogenetics: 14q32.31

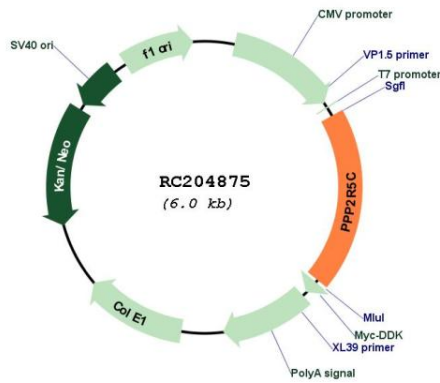
Protein Families: Druggable Genome, Phosphatase

Protein Pathways: Oocyte meiosis, Wnt signaling pathway

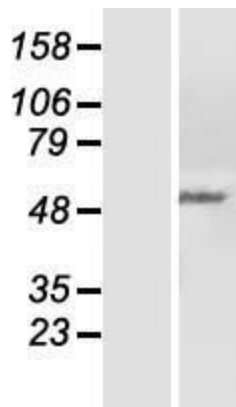
MW: 44.9 kDa

Gene Summary: The product of this gene belongs to the phosphatase 2A regulatory subunit B family. Protein phosphatase 2A is one of the four major Ser/Thr phosphatases, and it is implicated in the negative control of cell growth and division. It consists of a common heteromeric core enzyme, which is composed of a catalytic subunit and a constant regulatory subunit, that associates with a variety of regulatory subunits. The B regulatory subunit might modulate substrate selectivity and catalytic activity. This gene encodes a gamma isoform of the regulatory subunit B56 subfamily. Alternatively spliced transcript variants encoding different isoforms have been identified. [provided by RefSeq, Jul 2008]

Product images:



Circular map for RC204875



Western blot validation of overexpression lysate (Cat# [LY405869]) using anti-DDK antibody (Cat# [TA50011-100]). Left: Cell lysates from untransfected HEK293T cells; Right: Cell lysates from HEK293T cells transfected with RC204875 using transfection reagent MegaTran 2.0 (Cat# [TT210002]).