

## Product datasheet for **RC204873**

### **Munc18 1 (STXBP1) (NM\_001032221) Human Tagged ORF Clone**

#### **Product data:**

Product Type:	Expression Plasmids
Product Name:	Munc18 1 (STXBP1) (NM_001032221) Human Tagged ORF Clone
Tag:	Myc-DDK
Symbol:	Munc18 1
Synonyms:	DEE4; MUNC18-1; N-Sec1; NSEC1; P67; RBSEC1; unc-18A; UNC18; unc18-1
Mammalian Cell Selection:	Neomycin
Vector:	pCMV6-Entry (PS100001)
E. coli Selection:	Kanamycin (25 ug/mL)



[View online »](#)

**ORF Nucleotide Sequence:**

>RC204873 ORF sequence  
 Red=Cloning site Blue=ORF Green=Tags(s)

TTTTGTAATACGACTCACTATAGGGCGGCCGGGAATTCGTGACTGGATCCGGTACCGAGGAGATCTGCC  
 GCC**CGCATCGCC**

ATGGCCCCATTGGCCTCAAAGCTGTTGTGCGAGAGAAGATTATGCATGATGTGATAAAGAAGTCAAGA  
 AGAAGGGGAATGGAAGGTGCTGGTGGTGGATCAGTTAAGCATGAGGATGCTGTCTCTCTGCAAGAT  
 GACAGACATCATGACCGAGGGCATAACGATTGTGGAAGATATCAATAAGCGCAGAGAGCCCTCCCCAGC  
 CTGGAGGCTGTGTATCTCATCACTCCATCCGAGAAGTCCGTCCACTCTCTCATCAGTGACTTTAAGGACC  
 CGCCGACTGCTAAATACCGGGCTGCACACGTCTTCTTCACTGACTCTTGTCCAGATGCCCTGTTAATGA  
 ACTGGTAAATCCCGAGCAGCCAAAGTCATCAAACTCTGACGGAAATCAATATTGCATTCTCCCGTAT  
 GAATCCCAGGTCTATTCCCTGGACTCTGCTGACTCTTCCAAAGCTTCTACAGTCCCACAAGGCTCAGA  
 TGAAGAATCCTATACTGGAGCGCCTGGCAGAGCAGATCGCGACCCTTTGTCCACCCTGAAGGAGTACCC  
 GGCTGTGCGGTATCGGGGGAATACAAGGACAATGCCCTGCTGGCTCAGCTAATCCAGGACAAGCTCGAT  
 GCCTATAAAGCTGATGATCCAACAATGGGGGAGGGCCAGACAAGGCACGCTCCCAGCTCCTGATCCTGG  
 ATCGAGGCTTTGACCCAGCTCCCTGTGCTCCATGAATTGACTTTTCAGGCTATGAGTTATGATCTGCT  
 GCCTATCGAAAATGATGTATACAAGTATGAGACCAGCGGCATCGGGGAGGCACGGGTGAAGGAGGTGCTC  
 CTGGACGAGGACGACGACCTGTGGATAGCACTGCGCCACAAGCACATCGCAGAGGTGTCCAGGAAGTCA  
 CCCGGTCTCTGAAAGATTTTCTTCTAGCAAGAGAATGAATACTGGAGAGAAGACCACCATGCGGGACCT  
 GTCCCAGATGCTGAAGAAGATGCCTCAGTACCAGAAAGAGCTCAGCAAGTACTCCACCCACCTGCACCTT  
 GCTGAGGACTGTATGAAGCATTACCAAGCACCGTAGACAACTCTGCCGAGTGGAGCAGGACCTGGCCA  
 TGGGCACAGATGCTGAGGGAGAGAAGATCAAGGACCCTATGCGAGCCATCGTCCCATTCTGCTGGATGC  
 CAATGTACGACTTATGACAAAAATCCGCATCATCCTTCTCTACATCTTTTGAAGAATGGCATCACGGAG  
 GAAAACCTGAACAACTGATCCAGCACGCCAGATACCCCGGAGGATAGTGAGATCATCCAACATGG  
 CTCACCTCGGCGTGCCCATCGTACCGATTCCACGCTGCGTGCAGGAGCAAGCCGGAGCGGAAGGAACG  
 CATCAGCGAGCAGACCTACCAGCTCTCACGGTGGACTCCGATTATCAAGGACATCATGGAGGACACTATT  
 GAGGACAACTTGACACCAAACTACCCTTATATCTCTACCCGTTCTCTGCCTCCTCAGCACCACCG  
 CCGTCAGCGCCCCTATGGGCACTGGCATAAGAACAAGGCCCCAGGCGAGTACCGCAGTGGCCCCCGCT  
 CATCATTTTCATCCTTGGGGTGTGAGCCTGAATGAGATGCGCTGCGCTACGAGGTGACCCAGGCCAAC  
 GAAAGTGGGAGGTGCTGATAGGATCCACACACATCCTCACCCACAGAACTGCTGGACACACTGAAGA  
 AACTGAATAAAACAGATGAAGAAATAAGCAGT

**ACGCGT**ACGCGGCCGCTCGAGCAGAACTCATCTCAGAAGAGGATCTGGCAGCAAATGATATCCTGGATT  
 ACAAGGATGACGACGATAAGGTTTAA

**Protein Sequence:**

>RC204873 protein sequence  
 Red=Cloning site Green=Tags(s)

MAPIGLKAVVGEKIMHDVIKKVKKKGEWKVLVVDQLSMRMLSSCCKMTDIMTEGITIVEDINKRREPLPS  
 LEAVYLITPSEKSVHSLISDFKDPPTAKYRAAHVFFDSCPDALFVELVKSRAAKVIKTLTEINIAFLPY  
 ESQVYSLDSADSFQSFYSPHKAQMKNPILERLAEQIATLCATLKEYPAVRYRGEYKDNALLAQLIQDKLD  
 AYKADDPTMGEKPKARSQLLILDRGDFPSSPVLHELTFQAMSYDLLPIENDVYKYETSGIGEARVKEVL  
 LDEDDLWIALRHKHIAEVSQEVTRSLKDFSSSKRMNTGEKTTMRDLSQMLKMPQYQKELSKYSTHLHL  
 AEDCMKHVQGTVDKLCRVEQDLAMGTDAGEKIKDPMRAIVPILLDANVSTYDKIRIILLYIFLKNNGITE  
 ENLNKLIQHAQIPPEDSEIITNMAHLGVPVITDSTLRRRSKPERKERISEQTYQLSRWTPIIKDIMEDI  
 EDKLDTKHYPYISTRSSASFSTTAVSARYGHWKKNKAPGEYRSGPRLIIFILGGVSLNEMRCAYEVTQAN  
 GKWEVLIGSTHILTPQKLLDCLKLNKTDEEISS

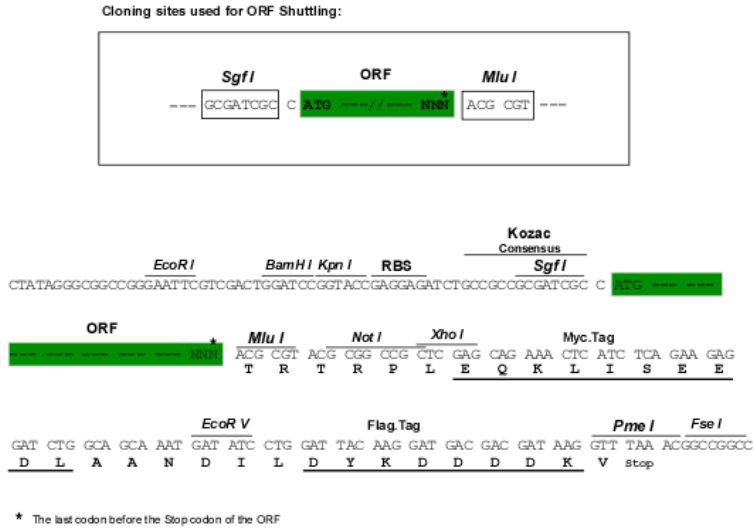
**TR**TRPLEQKLISEEDLAANDILDYKDDDDKV

**Chromatograms:**

[https://cdn.origene.com/chromatograms/mk6673\\_f04.zip](https://cdn.origene.com/chromatograms/mk6673_f04.zip)

**Restriction Sites:** SgfI-MluI

**Cloning Scheme:**



**ACCN:** NM\_001032221

**ORF Size:** 1782 bp

**OTI Disclaimer:** The molecular sequence of this clone aligns with the gene accession number as a point of reference only. However, individual transcript sequences of the same gene can differ through naturally occurring variations (e.g. polymorphisms), each with its own valid existence. This clone is substantially in agreement with the reference, but a complete review of all prevailing variants is recommended prior to use. [More info](#)

**OTI Annotation:** This clone was engineered to express the complete ORF with an expression tag. Expression varies depending on the nature of the gene.

**Components:** The ORF clone is ion-exchange column purified and shipped in a 2D barcoded Matrix tube containing 10ug of transfection-ready, dried plasmid DNA (reconstitute with 100 ul of water).

- Reconstitution Method:**
1. Centrifuge at 5,000xg for 5min.
  2. Carefully open the tube and add 100ul of sterile water to dissolve the DNA.
  3. Close the tube and incubate for 10 minutes at room temperature.
  4. Briefly vortex the tube and then do a quick spin (less than 5000xg) to concentrate the liquid at the bottom.
  5. Store the suspended plasmid at -20°C. The DNA is stable for at least one year from date of shipping when stored at -20°C.

**Note:** Plasmids are not sterile. For experiments where strict sterility is required, filtration with 0.22um filter is required.

**RefSeq:** [NM\\_001032221.6](#)

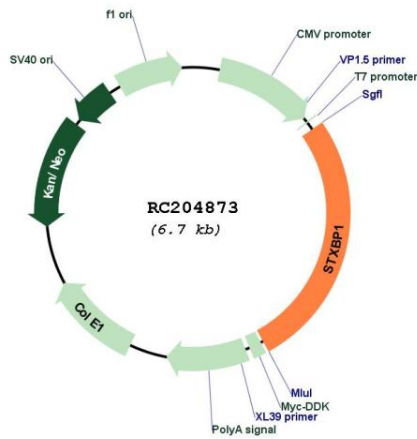
**RefSeq Size:** 3850 bp

**RefSeq ORF:** 1785 bp

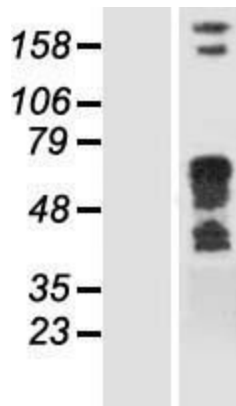
**Locus ID:** 6812  
**UniProt ID:** [P61764](#)  
**Cytogenetics:** 9q34.11  
**MW:** 67.6 kDa

**Gene Summary:** This gene encodes a syntaxin-binding protein. The encoded protein appears to play a role in release of neurotransmitters via regulation of syntaxin, a transmembrane attachment protein receptor. Mutations in this gene have been associated with infantile epileptic encephalopathy-4. Alternatively spliced transcript variants have been described. [provided by RefSeq, Feb 2010]

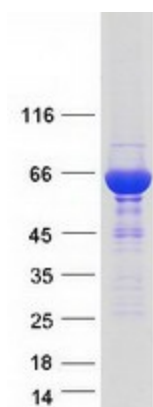
### Product images:



Circular map for RC204873



Western blot validation of overexpression lysate (Cat# [LY422289]) using anti-DDK antibody (Cat# [TA50011-100]). Left: Cell lysates from untransfected HEK293T cells; Right: Cell lysates from HEK293T cells transfected with RC204873 using transfection reagent MegaTran 2.0 (Cat# [TT210002]).



Coomassie blue staining of purified STXBP1 protein (Cat# [TP304873]). The protein was produced from HEK293T cells transfected with STXBP1 cDNA clone (Cat# RC204873) using MegaTran 2.0 (Cat# [TT210002]).