

Product datasheet for **RC204865**

SLC5A6 (NM_021095) Human Tagged ORF Clone

Product data:

Product Type:	Expression Plasmids
Product Name:	SLC5A6 (NM_021095) Human Tagged ORF Clone
Tag:	Myc-DDK
Symbol:	SLC5A6
Synonyms:	NERIB; SMVT
Mammalian Cell Selection:	Neomycin
Vector:	pCMV6-Entry (PS100001)
E. coli Selection:	Kanamycin (25 ug/mL)



[View online »](#)

**ORF Nucleotide
Sequence:**

>RC204865 ORF sequence
 Red=Cloning site Blue=ORF Green=Tags(s)

TTTTGTAATACGACTCACTATAGGGCGGCCGGGAATTCGTCGACTGGATCCGGTACCGAGGAGATCTGCC
 GCC**CGGATCGCC**

ATGAGTGTAGGGGTGAGCACCTCAGCCCCTCTTCCCAACCTCGGGCACAAGCGTGGGCATGTCTACCT
 TCTCCATCATGGACTATGTGGTGTTCGTCTGCTGCTGGTTCTCTCTTTGCCATTGGGCTCTACCATGC
 TTGTCGTGGCTGGGGCCGCATACTGTTGGTGAGCTGCTGATGGCGGACCGCAAAATGGGCTGCCTTCCG
 GTGGCACTGTCCCTGCTGGCCACCTTCCAGTCAGCCGTGGCCATCCTGGGTGTGCCGTGAGAGATCTACC
 GATTTGGGACCAATATTGGTTCCTGGGCTGCTGCTACTTTCTGGGGCTGCTGATACCTGCACACATCTT
 CATCCCGTTTTCTACCGCTGCATCTCACCAGTGCCATGAGTACCTGGAGCTTCGATTCAATAAACT
 GTGCGAGTGTGTGAACTGTGACCTTCATCTTTCAGATGGTGATCTACATGGGAGTTGTGCTCTATGCTC
 CGTCATTGGCTCTCAATGCAGTGACTGGCTTTGATCTGTGGCTGTCCGTGCTGGCCCTGGCATTGTCTG
 TACCGTCTATACAGCTCTGGGTGGGCTGAAGGCCGTCTCTGGACAGATGTGTTCCAGACACTGGTCATG
 TTCTCGGGCAGCTGGCAGTTATCATCGTGGGGTCAGCCAAGGTGGGCGGCTTGGGGCGTGTGTGGGCCG
 TGGCTTCCAGCACGGCCGCATCTCTGGGTTTGGAGCTGGATCCAGACCCCTTTGTGCGGCACACCTTCTG
 GACCTTGGCCTTCGGGGGTGTCTTCATGATGCTCTCCTTATACGGGGTGAACCAGGCTCAGGTGCAGCGG
 TACCTCAGTTCCCGCACGGAGAAGGCTGCTGTGCTCTCCTGTTATGCAGTGTCCCTTCCAGCAGGTGT
 CCCTCTGCGTGGGCTGCCTCATTGGCCTGGTCACTGTTCCGCTATTACCAGGAGTATCCCATGAGCATTCA
 GCAGGCTCAGGCAGCCCCAGACCAGTTCGTCTGACTTTGTGATGGATCTCCTGAAGGGCTGCCAGGC
 CTGCCAGGGCTCTTCATTGCCTGCCTCTCAGCGGCTCTCTCAGCACTATATCCTCTGCTTTTAATTCAT
 TGGCAACTGTTACGATGGAAGACCTGATTCGACCTTGGTCCCTGAGTTCTCTGAAGCCCGGGCCATCAT
 GCTTTCCAGAGGCTTGCCTTTGGCTATGGGCTGCTTTGTCTAGGAATGGCCTATATTTCCCTCCAGATG
 GGACCTGTGCTGCAGGCAGCAATCAGCATCTTTGGCATGGTTGGGGGACCGCTGCTGGGACTCTTCTGCC
 TTGGAATGTTCTTTCCATGTGCTAACCCCTCCTGGTGTGTTGTGGGCTGTTGGCTGGGCTCGTCATGGC
 CTTCTGGATTGGCATCGGGAGCATCGTGACCAGCATGGGCTCCAGCATGCCACCCTCTCCCTCTAATGGG
 TCCAGTCTCTCCCTGCCACCAATCTAACCGTTGCCACTGTGACCACACTGATGCCCTTGACTACCTTCT
 CCAAGCCACAGGGCTGCAGCGTCTATTCTTGTCTTACTTATGGTACAGTGTCCAACTCCACCAC
 AGTGATTGTGGTGGCCTGATTGTGAGTCTACTACTGGGAGAATGCGAGGCCGGTCCCTGAACCCTGCA
 ACCATTTACCCAGTGTTCGCAAGCTCCTGTCCCTCCTCCGTTGTCTGTCAGAAGCGGCTCCACTGCA
 GGAGCTACGGCCAGGACCACCTCGACACTGGCCTGTTTCCCTGAGAAGCCGAGGAATGGTGTGCTGGGGGA
 CAGCAGAGACAAGGAGGCCATGGCCCTGGATGGACAGCCTATCAGGGGAGCAGTCCACCTGCATCCTC
 CAGGAGACCTCCCTG

ACGCGTACGCGGCCGCTCGAGCAGAACTCATCTCAGAAGAGGATCTGGCAGCAATGATATCCTGGATT
 ACAAGGATGACGACGATAAGGTTTAA

Protein Sequence: >RC204865 protein sequence
Red=Cloning site Green=Tags(s)

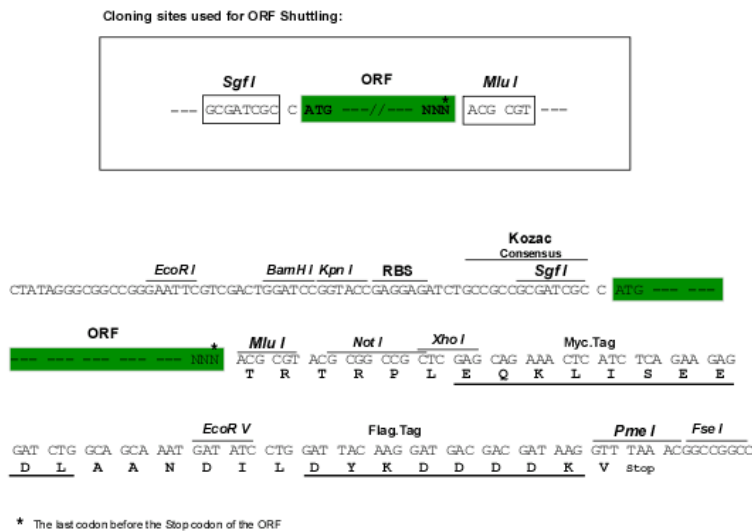
MSVGVSTSAPLSPTSGTSVGMSTFSIMDYVVFVLLLVLSLAIGLYHACRQWGRHTVGE LLMADRKMGC L P
 VALSLLATFQSAVAILGVPSEIYRFGTQYWFLGCCYFLG LLIPAHIFIPVFYRLHLTSAYEYELERFNKT
 VRVCGTVTFIFQMVIIYMGVVL YAPSLALNAVTFDLWLSVLALGIVCTVYTALGGLKAVIWDVVFQTLVM
 FLGQLAVIIVGSAKVGGLGRVWAVASQHGRI SGFELDPDPFVRHTFWTLAFGGVFMMLSL YGVNQAQVQR
 YLSSRTEKA AVLSCYAVFPFQQVSLCVGCLIGLVMFAYYQEYPMSIQQAQAPDQFVLYFVMDLLKGLPG
 LPGLFIA CLFSGSLSTISSAFNSLATVTMEDLIRPWFPEFSEARAIMLSRGLAFGYGLLCLGMAYISSQM
 GPVLQAAISIFGMVGGPLLGLFCLGMFFPCANPPGAVVGLLAGLVMFVWIGIGSIVTSMGSSMPPSPSNG
 SSFSLPTNLTVATVTTLMLPTTF SKPTGLQRFYSLSYLWYSAHNSTTVIVVGLIVSLLTGRMRGRSLNPA
 TIYPVLPKLLSLLPLSCQKRLHCRSYGQDHLDTGLFPEKPRNGVLGDSRDKEAMALDGTAYQGSSTCIL
 QETSL

TRTRPLEQKLI SEEDLAANDILDYKDDDDKV

Chromatograms: https://cdn.origene.com/chromatograms/mk6199_a04.zip

Restriction Sites: SgfI-MluI

Cloning Scheme:



ACCN: NM_021095

ORF Size: 1905 bp

OTI Disclaimer: The molecular sequence of this clone aligns with the gene accession number as a point of reference only. However, individual transcript sequences of the same gene can differ through naturally occurring variations (e.g. polymorphisms), each with its own valid existence. This clone is substantially in agreement with the reference, but a complete review of all prevailing variants is recommended prior to use. [More info](#)

OTI Annotation: This clone was engineered to express the complete ORF with an expression tag. Expression varies depending on the nature of the gene.

Components: The ORF clone is ion-exchange column purified and shipped in a 2D barcoded Matrix tube containing 10ug of transfection-ready, dried plasmid DNA (reconstitute with 100 ul of water).

Reconstitution Method:

1. Centrifuge at 5,000xg for 5min.
2. Carefully open the tube and add 100ul of sterile water to dissolve the DNA.
3. Close the tube and incubate for 10 minutes at room temperature.
4. Briefly vortex the tube and then do a quick spin (less than 5000xg) to concentrate the liquid at the bottom.
5. Store the suspended plasmid at -20°C. The DNA is stable for at least one year from date of shipping when stored at -20°C.

RefSeq: [NM_021095.3](#)

RefSeq Size: 3272 bp

RefSeq ORF: 1908 bp

Locus ID: 8884

UniProt ID: [Q9Y289](#)

Cytogenetics: 2p23.3

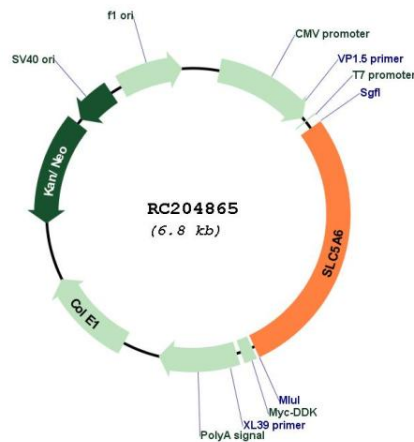
Domains: SSF

Protein Families: Transmembrane

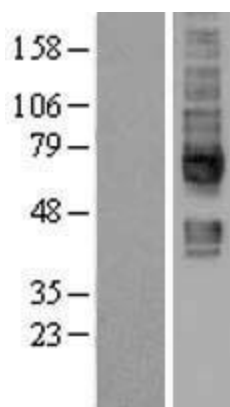
MW: 68.6 kDa

Gene Summary: Transports pantothenate, biotin and lipoate in the presence of sodium.[UniProtKB/Swiss-Prot Function]

Product images:



Circular map for RC204865



Western blot validation of overexpression lysate (Cat# [LY402831]) using anti-DDK antibody (Cat# [TA50011-100]). Left: Cell lysates from untransfected HEK293T cells; Right: Cell lysates from HEK293T cells transfected with RC204865 using transfection reagent MegaTran 2.0 (Cat# [TT210002]).