

Product datasheet for **RC204859**

SCY1 like 3 (SCYL3) (NM_020423) Human Tagged ORF Clone

Product data:

Product Type:	Expression Plasmids
Product Name:	SCY1 like 3 (SCYL3) (NM_020423) Human Tagged ORF Clone
Tag:	Myc-DDK
Symbol:	SCY1 like 3
Synonyms:	PACE-1; PACE1
Mammalian Cell Selection:	Neomycin
Vector:	pCMV6-Entry (PS100001)
E. coli Selection:	Kanamycin (25 ug/mL)



[View online »](#)

ORF Nucleotide
Sequence:

>RC204859 ORF sequence
Red=Cloning site Blue=ORF Green=Tags(s)

TTTTGTAATACGACTCACTATAGGGCGGCCGGGAATTCGTGACTGGATCCGGTACCGAGGAGATCTGCC
GCCGCGATCGCC

ATGGGATCAGAGAACAGTGTCTTTAAAGAGCTATACACTGAGAGAACCACCATTTACCTTACCTCTGGAC
TTGCTGTTTATCCCGCTGTACTGCAAGATGGCAAATTTGCTTCAGTTTTTGTGTATAAGAGAGAAAATGA
AGACAAGGTTAATAAAGCTGCCAAGCATTTGAAGACACTTCGTACCCCTTGCTTGCTAAGATTTTTATCT
TGTAAGTGTGGAAGCGGATGGCATTTCATCTGTCTGACTGAGCGAGTACAGCCCTGGAAGTGGCTTTGGAAA
CATTGTCTTCTGCAGAGGTCTGTGCTGGGATCTATGACATATTGCTGGCTCTTATCTTCTTCATGACAG
AGGACACCTAACACACAATAATGTCTGTTTATCATCTGTGTTTGTGAGTGAAGATGGACTGGAAGCTA
GGAGGAATGGAACTGTTTGTAAAGTTTCTCAGGCCACACCAGAGTTTCTGAGGAGTATTCAGTCAATAA
GAGACCCAGCATCTATCCCTCCTGAAGAGATGTCTCCAGAATTCACAACCTCCCAGAGTGTATGGACA
TGCCCGGATGCCTTTTCATTTGGAACATTTGGTGGAAAGTTTGTCTACAATCTTAAATGAACAGGTTTCA
GCGGATGTTCTCTCCAGCTTTCAACAGACTTGCCTCAACTTTGCTGAATCCCATTCCAAAATGTCCGGC
CAGCGCTCTGCACCTTACTATCTCATGACTTCTCAGAAATGATTTTCTGGAAGTTGTGAATTTCTTGAA
AAGTTTAAACATTGAAGAGTGAAGAGGAGAAAACCGAATTTCTTAAATTTCTGCTGGACAGAGTCACTGCTC
TTGTCAGAGGAATTGATAGCTTCAAGTTGGTGCCTCTCTGCTTAATCAGTTGGTGTGGCAGAGCCAG
TGGCTGTTAAGAGTTTCTTCTTATCTGCTTGGCCCCAAAAAGATCATGCGCAGGGAGAAAACCTTGTG
CTTGTCTCACCAGCCCTGTTCCAGTCAAGGTTGATCCCGTGTCTCCAGTTGTTGAAGTTCATGAA
GAGCATGTGCGGATGGTGTCTGTCTCACATCGAGGCCACGTGAGCACTTCACTCAGGAGCAGCTGA
AGAAAGTCACTTGCACAGGTTTTGCTGGGCTGCGTGATACTAGTATTCCATTGTGGCAATTAATCTCT
GCATAGCCTAGCAGTGTGGTCTCTCTGCTTGGACCAGAGGTGGTTGTGGGAGGAGAACGAACCAAGATC
TTCAAACGCACTGCCCAAGTTTTACTAAAAATACTGACCTTTCTCTAGAAGGTGATCCATTTTCTCAGC
CTATTAATTTCCATAAACGACTCTCAGATGTAAAAATACTTCGGAGGACAGTGAAAACCTCCCATC
AAGTTCTAAAAAGTCTGAGGAGTGGCTGACTGGAGTGAACCTGAGGAGCCTGAAAATCAAAGTCAAC
ATACAGATTTGGCTAGAGAACCTTGTGATGATGTCAAGTCCAGTGCCTACCTGGATGTGGAAGAGT
CATCTTGGGATGACTGCGAGCCAGCAGCTTAGATACTAAAGTAAACCCAGGAGGTGGAATCACTGCTAC
AAAACCTGTTACCTCAGCGGAGCAGAAGCCTATCCTGCTTTGCTTTCACTCACTGAAGAGTCTATGCCT
TGGAAATCAAGCTTACCCAAAAGATTAGCCTTGTACAAAGGGGGATGACGCAGACCAATCGAGCCGC
CAAAAGTGTATCACAAGAAAGGCCCTTAAAGTTCCATCAGAATTTGGTTTAGGAGAGGAATTCACCAT
TCAAGTAAAAAAGAGCCAGTAAAGATCCTGAGATGGATTGGTTTGTGATATGATCCCAGAAATTAAG
CCTTCTGCTGCTTTTCTTATATTACCTGAACTGAGGACAGAAATGGTCCCAAAAAGGATGATGTCTCC
CAGTGTGAGTTTTCTCAAAATTTGCTGACGAGAAATTAAGTGGGAGAGGCTGAAGGCTGGGAAGA
AGAAGGGAGCTGAAGTGGGAAGATAATAACTGG

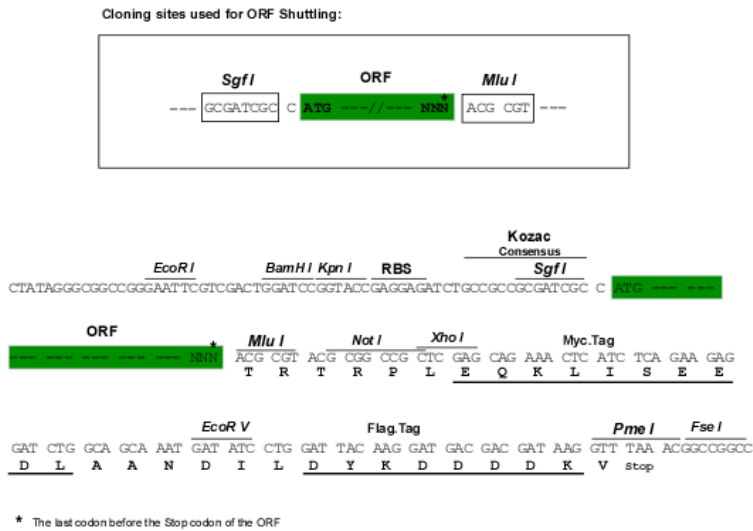
ACGCGTACGCGGCCGCTCGAGCAGAACTCATCTCAGAAGAGGATCTGGCAGCAATGATATCCTGGATT
ACAAGGATGACGACGATAAGGTTTAA

Protein Sequence: >RC204859 protein sequence
 Red=Cloning site Green=Tags(s)

MGSENSALKSYTLREPPFTLP SGLAVYPAVLQDGKFASVFVYKRENEDKVNKAAKHLKTLRHPCLLRFLS
 CTVEADGIHLVTERVQPLEVALETLSSAEVCAGIYDILLALIFLHDRGHLTHNNVCLSSVFVSEDGHWKL
 GGMETVCKVQSQATPEFLRSIQSIRD PASIPPEEMSPEFTTLP ECHGHARDAF SFGTLVESLLTILNEQVS
 ADVLSSFQQT LHS TLLNPIPKCRPALCTLLSHDFFRNDFLEVVNFKLSLTLKSEEEKTEFFKFLDRVSC
 LSEELIASRLVPLLLNQLVFAEPVAVKSFLPYLLGPKDHAQGETPCLLSPALFQSRVIPVLLQLFEVHE
 EHVRMVL LSHIEAYVEHFTQEQLKKVILPQVLLGLRDTSDSIVAITLHSLAVLVSLLGPEVVVGGERTKI
 FKRTAPSFTKNTDLSLEGDPFSQPIKFPINGLSDVKNTSEDS ENFPSSSKKSEEWPDWSEPEEPENQTVN
 IQIWPREPCDDVKSQCTTL DVEESSWDDCEPSSLDTKVNPGGGITATKPVTS AEQKPIPALLSLTEESMP
 WKSSLPQKISLVQRGDDADQIEPKVSSQERPLKVPSELGLGEEFTIQVKKKPKVDPEMDWFADMIPEIK
 PSAAFLILPELRTEMVPPKDDVSPVMQFSSKFAAAEITEGAEGWEEEGELN WEDNNW

TRTRPLEQKLISEEDLAANDILDYKDDDDKV

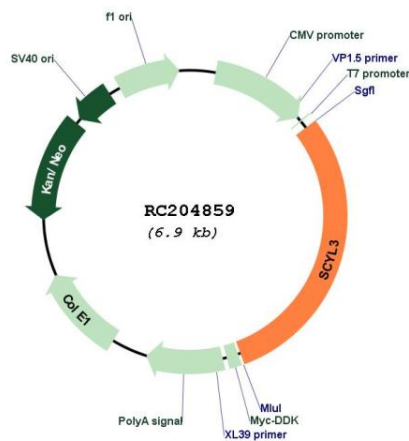
Chromatograms: https://cdn.origene.com/chromatograms/mk6425_h08.zip
Restriction Sites: SgfI-MluI
Cloning Scheme:



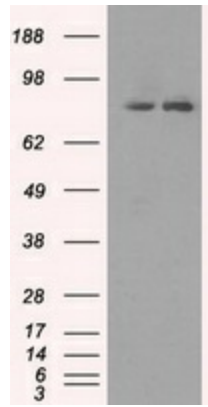
ACCN: NM_020423
ORF Size: 2064 bp
OTI Disclaimer: The molecular sequence of this clone aligns with the gene accession number as a point of reference only. However, individual transcript sequences of the same gene can differ through naturally occurring variations (e.g. polymorphisms), each with its own valid existence. This clone is substantially in agreement with the reference, but a complete review of all prevailing variants is recommended prior to use. [More info](#)
OTI Annotation: This clone was engineered to express the complete ORF with an expression tag. Expression varies depending on the nature of the gene.

Components:	The ORF clone is ion-exchange column purified and shipped in a 2D barcoded Matrix tube containing 10ug of transfection-ready, dried plasmid DNA (reconstitute with 100 ul of water).
Reconstitution Method:	<ol style="list-style-type: none"> 1. Centrifuge at 5,000xg for 5min. 2. Carefully open the tube and add 100ul of sterile water to dissolve the DNA. 3. Close the tube and incubate for 10 minutes at room temperature. 4. Briefly vortex the tube and then do a quick spin (less than 5000xg) to concentrate the liquid at the bottom. 5. Store the suspended plasmid at -20°C. The DNA is stable for at least one year from date of shipping when stored at -20°C.
RefSeq:	NM_020423.4 , NP_065156.4
RefSeq Size:	2928 bp
RefSeq ORF:	2067 bp
Locus ID:	57147
UniProt ID:	Q8IZE3
Cytogenetics:	1q24.2
Domains:	S_TKc
Protein Families:	Druggable Genome, Protein Kinase
MW:	76.7 kDa
Gene Summary:	This gene encodes a protein with a kinase domain and four HEAT repeats. The encoded protein interacts with the C-terminal domain of ezrin, an ERM protein, and may play a role in cell adhesion and migration. Alternative splicing results in multiple transcript variants encoding multiple isoforms. [provided by RefSeq, Jun 2012]

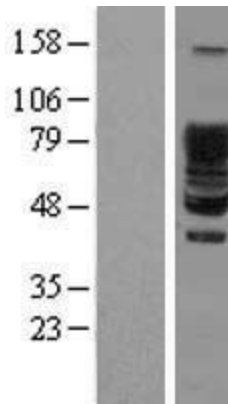
Product images:



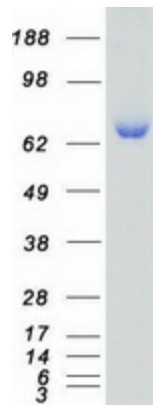
Circular map for RC204859



HEK293T cells were transfected with the pCMV6-ENTRY control (Cat# [PS100001], Left lane) or pCMV6-ENTRY SCYL3 (Cat# RC204859, Right lane) cDNA for 48 hrs and lysed. Equivalent amounts of cell lysates (5 ug per lane) were separated by SDS-PAGE and immunoblotted with anti-SCYL3 (Cat# [TA500487]). Positive lysates [LY412474] (100ug) and [LC412474] (20ug) can be purchased separately from OriGene.



Western blot validation of overexpression lysate (Cat# [LY412474]) using anti-DDK antibody (Cat# [TA50011-100]). Left: Cell lysates from untransfected HEK293T cells; Right: Cell lysates from HEK293T cells transfected with RC204859 using transfection reagent MegaTran 2.0 (Cat# [TT210002]).



Coomassie blue staining of purified SCYL3 protein (Cat# [TP304859]). The protein was produced from HEK293T cells transfected with SCYL3 cDNA clone (Cat# RC204859) using MegaTran 2.0 (Cat# [TT210002]).