

Product datasheet for RC204858

PROCR (NM_006404) Human Tagged ORF Clone

Product data:

Product Type: Expression Plasmids
Product Name: PROCR (NM_006404) Human Tagged ORF Clone
Tag: Myc-DDK
Symbol: PROCR
Synonyms: CCCA; CCD41; EPCR
Mammalian Cell Selection: Neomycin
Vector: pCMV6-Entry (PS100001)
E. coli Selection: Kanamycin (25 ug/mL)
ORF Nucleotide Sequence: >RC204858 representing NM_006404.
Blue=ORF Red=Cloning site Green=Tag(s)

```
GCTCGTTT TAGTGAACCGTCAGAATTTTGT AATACGACTCACTATAGGGCGCCGGGAATTCGTCGACTG
GATCCGGTACCGAGGAGATCTGCCGCCGCGATCGCC
ATGTTGACAACATTGCTGCCGATACTGCTGCTGTCTGGCTGGGCCTTTTGTAGCCAAGACGCCTCAGAT
GGCCTCCAAGACTTCATATGCTCCAGATCTCCTACTTCCGCGACCCCTATCACGTGTGGTACCAGGGC
AACCGCTCGTGGGGGACACCTAACGCACGTGCTGGAAGGCCAGACACCAACCACGATCATTGAG
CTGCAGCCCTTGCAGGAGCCGAGAGCTGGGCGGCACGCAGAGTGGCCTGCAGTCTACCTGCTCCAG
TTCCACGGCCTCGTGCCTGGTGCACCAGGAGCGGACCTTGGCCTTTCCTCTGACCATCCGCTGCTTC
CTGGGCTGTGAGCTGCCTCCCGAGGGCTCTAGAGCCCATGTCTTCTCGAAGTGGCTGTGAATGGGAGC
TCCTTTGTGAGTTCCCGCCGGAGAGAGCTTGTGGCAGGCAGACACCCAGGTCACCTCCGAGTGGTC
ACCTTCACCTGCAGCAGCTCAATGCCTACAACCGCACTCGGTATGAACTGCGGGAATTCCTGGAGGAC
ACCTGTGTGAGTATGTGCAGAAACATATTTCCGCGGAAAACACGAAAGGGAGCCAAACAAGCCGCTCC
TACACTTCGCTGGTCTGGGCGTCTGGTGGGCGGTTTCATCATTGCTGGTGTGGCTGTAGGCATCTTC
CTGTGCACAGGTGGACGGCGATGT
AGCGGACCGACGCGTACGCGGCCGCTCGAGCAGAACTCATCTCAGAAGAGGATCTGGCAGCAAATGAT
ATCCTGGATTACAAGGATGACGACGATAAGGTTTAA
```

Protein Sequence: >Peptide sequence encoded by RC204858
Blue=ORF Red=Cloning site Green=Tag(s)

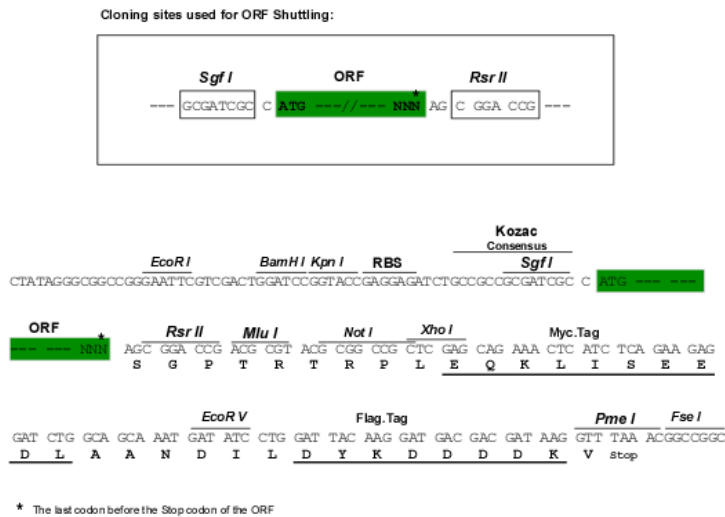
```
MLTLLPILLLSGWAFCSQDASDGLQRLHMLQISYFRDPYHVWYQGNASLGGHLTHVLEGPDTNTTIIQ
LQPLQEPESWARTQSQLQSYLLQFHGLVRLVHQERTLAFPLTIRCFLGCELPPEGSRAHVFEVAVNGS
SFVSRPERALWQADTQVTSQVVTFTLQQLNAYNRTRYELREFLEDTCVQYVQKHI SAENTKGSQTSRS
YTSLVLVGVVGGFIIAGVAVGIFLCTGGRRC
SGPTRRTRPLEQKLISEEDLAANDILDYKDDDDKV
```



Chromatograms: https://cdn.origene.com/chromatograms/mk6189_c06.zip

Restriction Sites: SgfI-RsrII

Cloning Scheme:



ACCN: NM_006404

ORF Size: 714 bp

OTI Disclaimer: The molecular sequence of this clone aligns with the gene accession number as a point of reference only. However, individual transcript sequences of the same gene can differ through naturally occurring variations (e.g. polymorphisms), each with its own valid existence. This clone is substantially in agreement with the reference, but a complete review of all prevailing variants is recommended prior to use. [More info](#)

OTI Annotation: This clone was engineered to express the complete ORF with an expression tag. Expression varies depending on the nature of the gene.

Components: The ORF clone is ion-exchange column purified and shipped in a 2D barcoded Matrix tube containing 10ug of transfection-ready, dried plasmid DNA (reconstitute with 100 ul of water).

- Reconstitution Method:**
1. Centrifuge at 5,000xg for 5min.
 2. Carefully open the tube and add 100ul of sterile water to dissolve the DNA.
 3. Close the tube and incubate for 10 minutes at room temperature.
 4. Briefly vortex the tube and then do a quick spin (less than 5000xg) to concentrate the liquid at the bottom.
 5. Store the suspended plasmid at -20°C. The DNA is stable for at least one year from date of shipping when stored at -20°C.

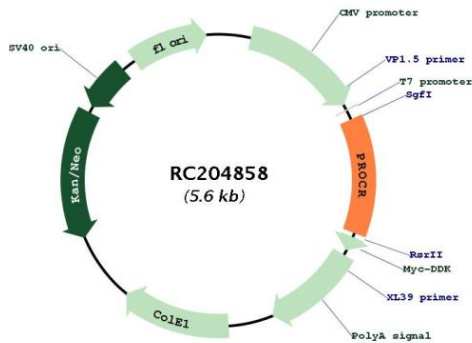
Note: Plasmids are not sterile. For experiments where strict sterility is required, filtration with 0.22um filter is required.

RefSeq: [NM_006404.2](#)

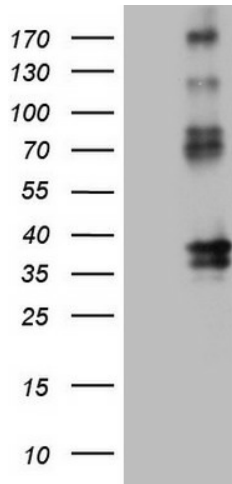
RefSeq Size: 1506 bp

RefSeq ORF:	717 bp
Locus ID:	10544
UniProt ID:	<u>Q9UNN8</u>
Cytogenetics:	20q11.22
Protein Families:	Druggable Genome, ES Cell Differentiation/IPS, Transmembrane
MW:	26.6 kDa
Gene Summary:	The protein encoded by this gene is a receptor for activated protein C, a serine protease activated by and involved in the blood coagulation pathway. The encoded protein is an N-glycosylated type I membrane protein that enhances the activation of protein C. Mutations in this gene have been associated with venous thromboembolism and myocardial infarction, as well as with late fetal loss during pregnancy. The encoded protein may also play a role in malarial infection and has been associated with cancer. [provided by RefSeq, Jul 2013]

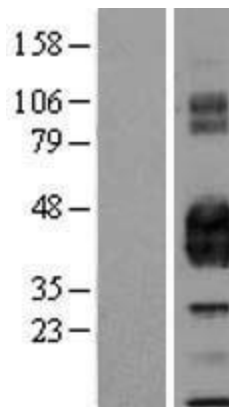
Product images:



Circular map for RC204858



HEK293T cells were transfected with the pCMV6-ENTRY control (Cat# [PS100001], Left lane) or pCMV6-ENTRY PROCR (Cat# RC204858, Right lane) cDNA for 48 hrs and lysed. Equivalent amounts of cell lysates (5 ug per lane) were separated by SDS-PAGE and immunoblotted with anti-PROCR (Cat# [TA805770])(1:2000). Positive lysates [LY401925] (100ug) and [LC401925] (20ug) can be purchased separately from OriGene.



Western blot validation of overexpression lysate (Cat# [LY401925]) using anti-DDK antibody (Cat# [TA50011-100]). Left: Cell lysates from untransfected HEK293T cells; Right: Cell lysates from HEK293T cells transfected with RC204858 using transfection reagent MegaTran 2.0 (Cat# [TT210002]).